



# Canon PowerShot SD1400 IS Screen Replacement

Replace your blank and or cracked screen to see your photographs on the camera as you take them.

Written By: Braxton Beal



# INTRODUCTION

Screens can be cracked and broken or stop working completely. This guide will show how to replace the screen in the device.



## TOOLS:

- [Metal Spudger](#) (1)
- [iFixit Opening Tools](#) (1)
- [64 Bit Driver Kit](#) (1)




## PARTS:

- [Canon PowerShot SD1400 IS screen](#) (1)

## Step 1 — Screen



- Remove the 2.0 mm Phillips screws on both sides of the camera using the Phillips #00 screwdriver.

 There will be 4 total screws that need to be removed, 2 on each side.

## Step 2



- Remove the 4.0 mm Phillips screw located on the bottom of the camera.

### Step 3



- Remove the front face panel of the camera.
- ⓘ The face can be removed by hand with a firm pressure. If one point of the face is stuck to the body, ensure that there is not a screw remaining at that position to hold it in place.

### Step 4



- Remove the rear panel of the camera.

## Step 5



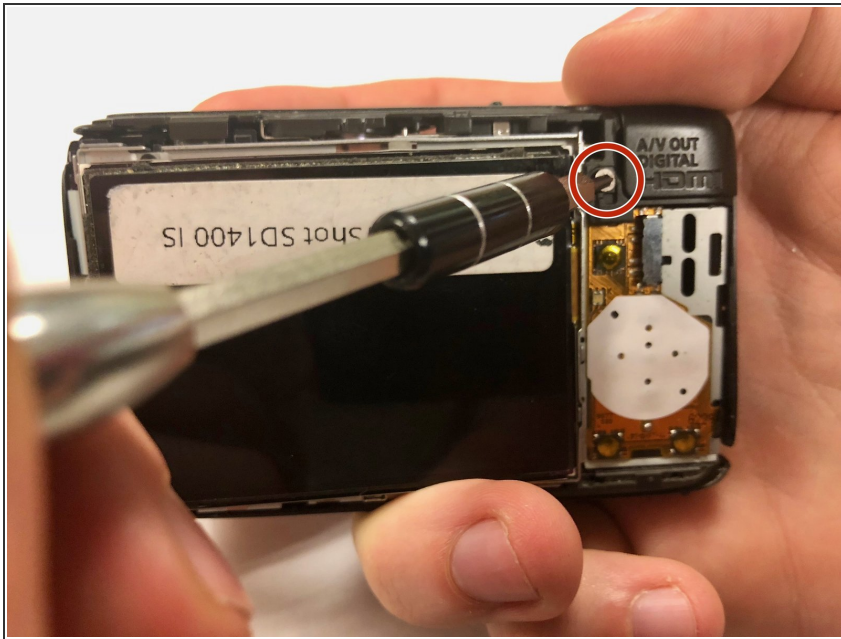
- Remove the panel of buttons by hand.

## Step 6



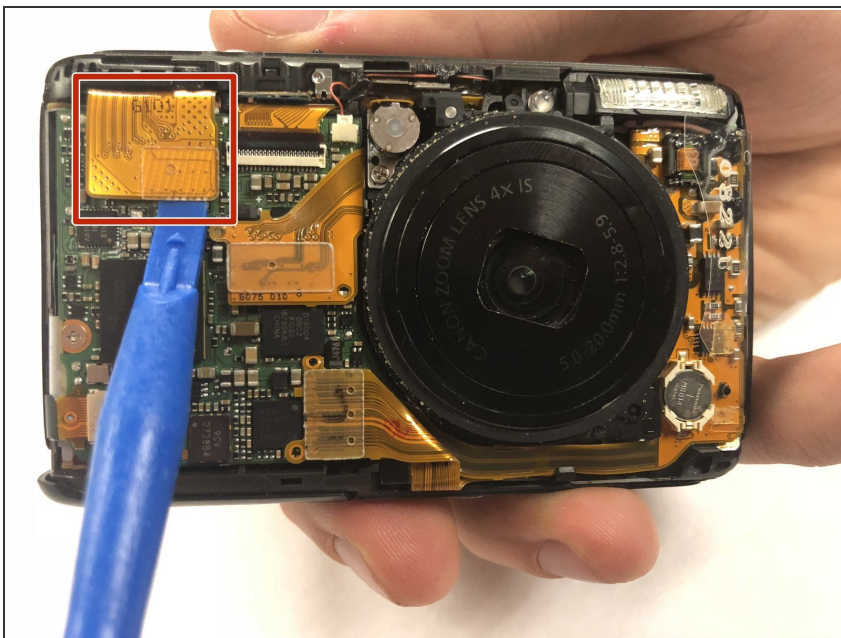
- Remove the 3.0 mm Phillips copper colored screw from the top of the camera.

## Step 7



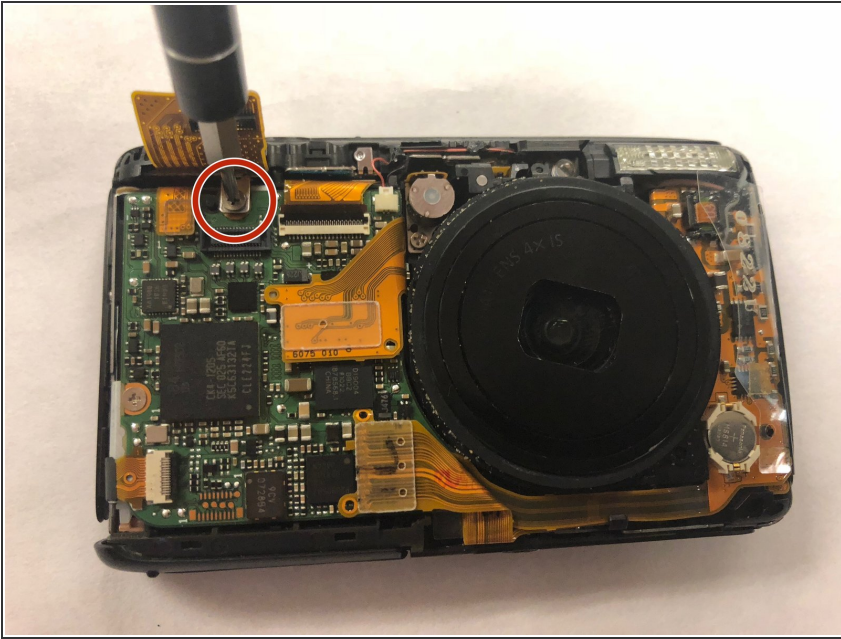
- Remove the 3.0 mm Phillips silver screw from the rear face of the camera, located on the upper right corner.

## Step 8



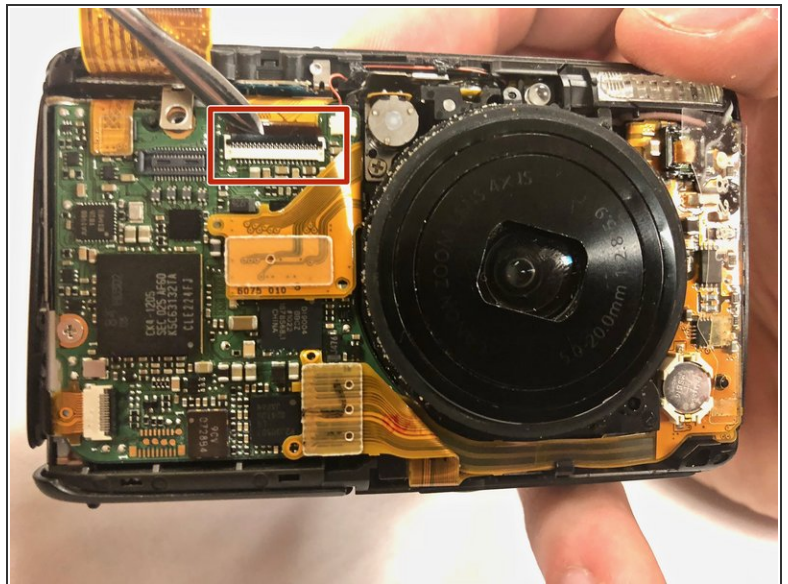
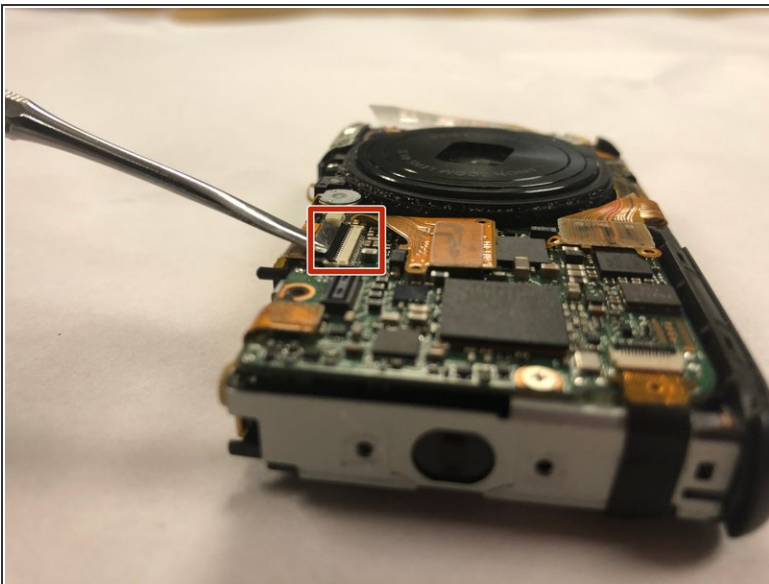
- Using the plastic spudger, pry the golden film on the front face of the camera off of the microchip.
- Once removed, a silver screw will be visible from underneath the golden film.

## Step 9



- Remove the 3.0 mm Phillips silver screw using the screwdriver.

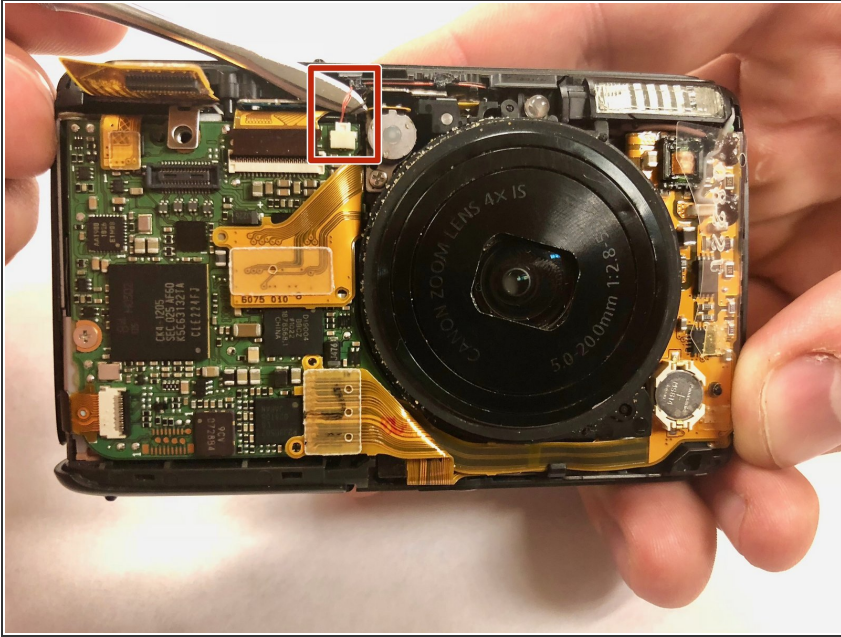
## Step 10



- Using the metal spudger, carefully pry the small black tab away from the brown film end of the golden film.
- Once released, the small black tab will point straight away from the front face of the camera.
- After releasing the tab, the golden film will no longer be secured to the front face of the camera.

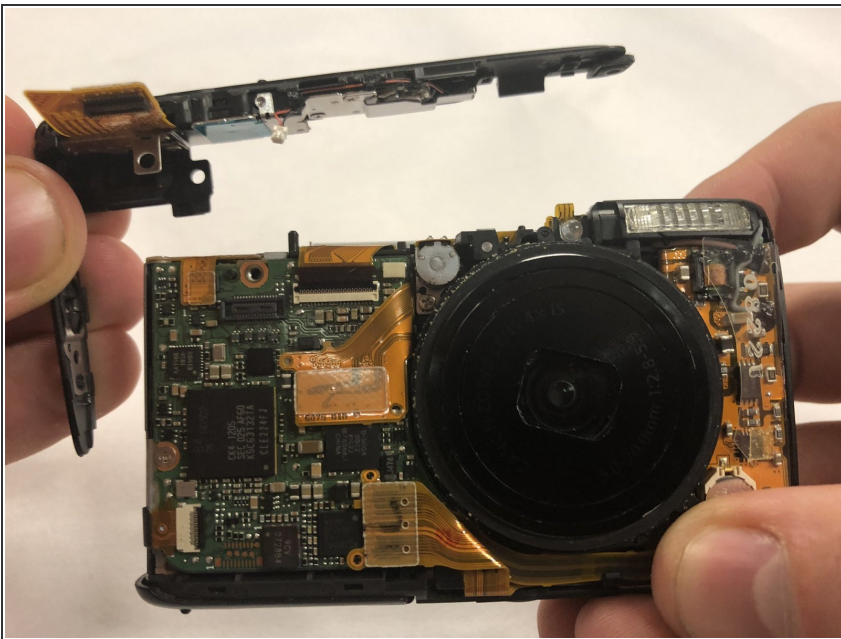
This document was generated on 2019-09-18 12:58:54 PM (MST).

## Step 11



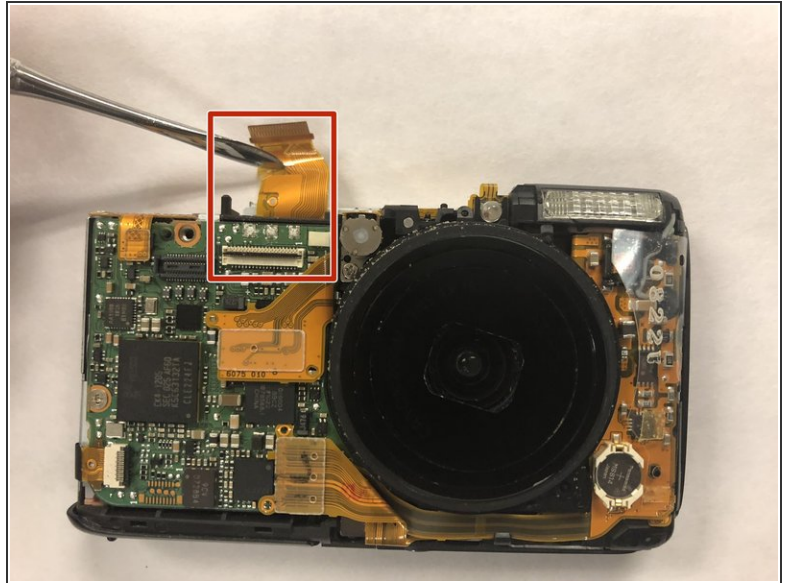
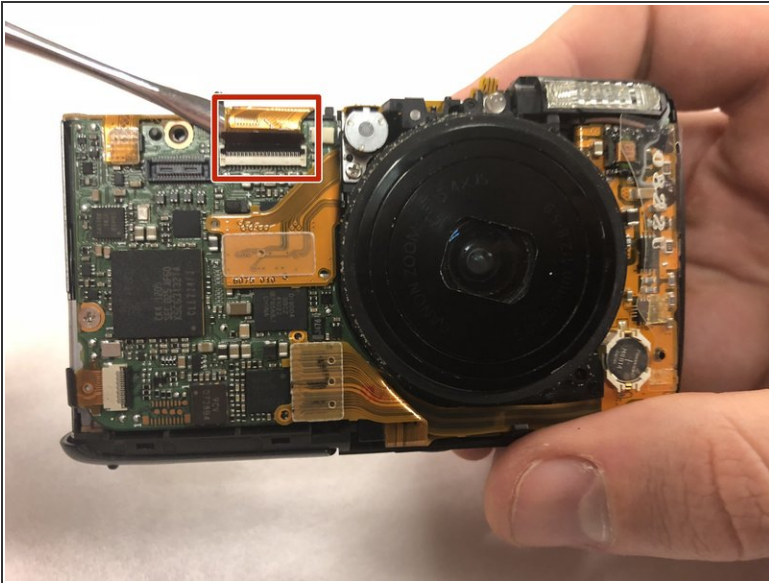
- Unplug the small chip from the face of the camera by carefully inserting the metal spudger underneath the cluster of red wires visible. Then lift the cluster of wires upwards, parallel to the front face of the camera.

## Step 12



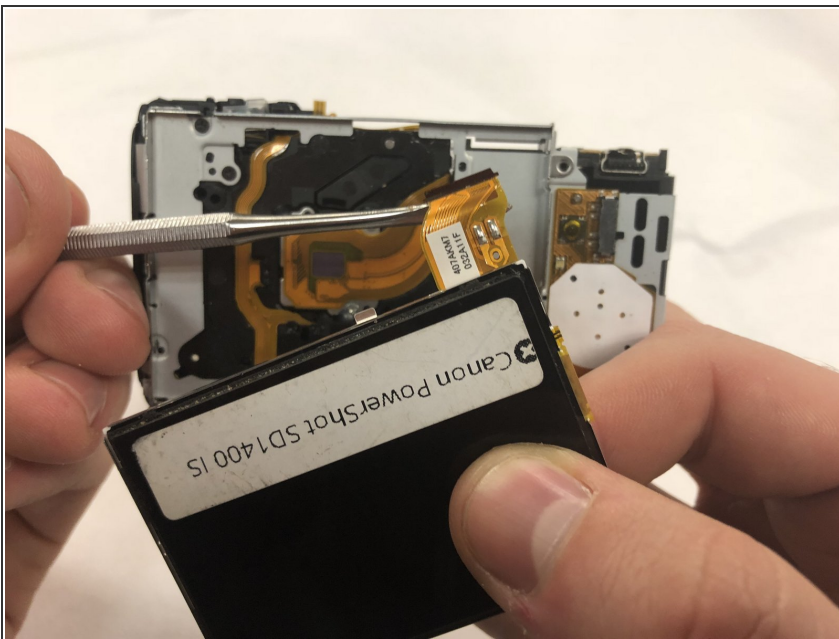
- You can now remove the top panel from the camera using your hands with firm pressure.

## Step 13



- Insert the metal spudger underneath the golden film on the front face
- Lift the golden film on the front face of the camera up and away from its connection

## Step 14



- Remove the screen by sliding the golden film out of the channel and pulling the screen away from the camera.

To reassemble your device, follow these instructions in reverse order.