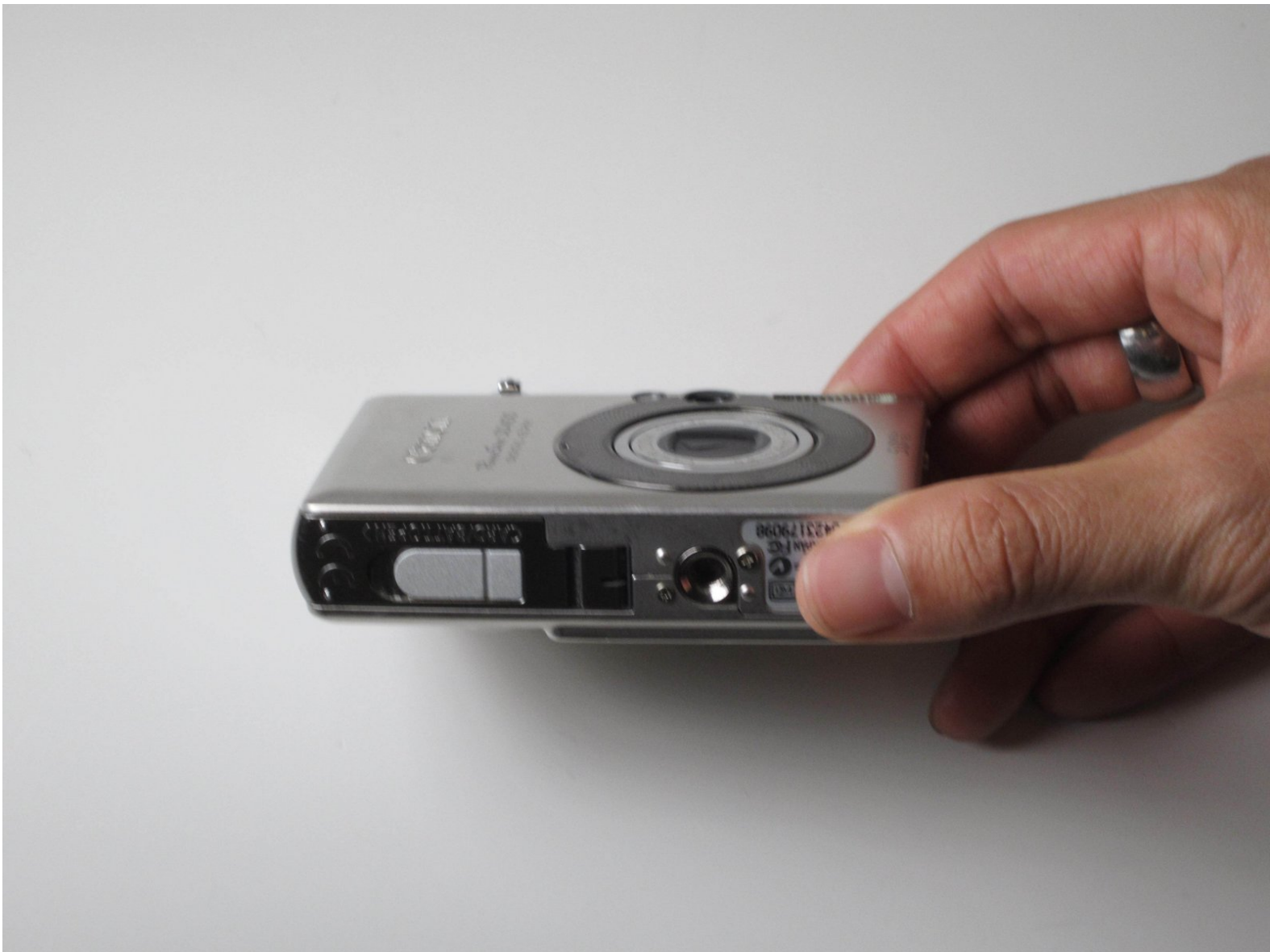




Canon PowerShot SD400 Memory Card Replacement

Written By: Yi Huang Ke

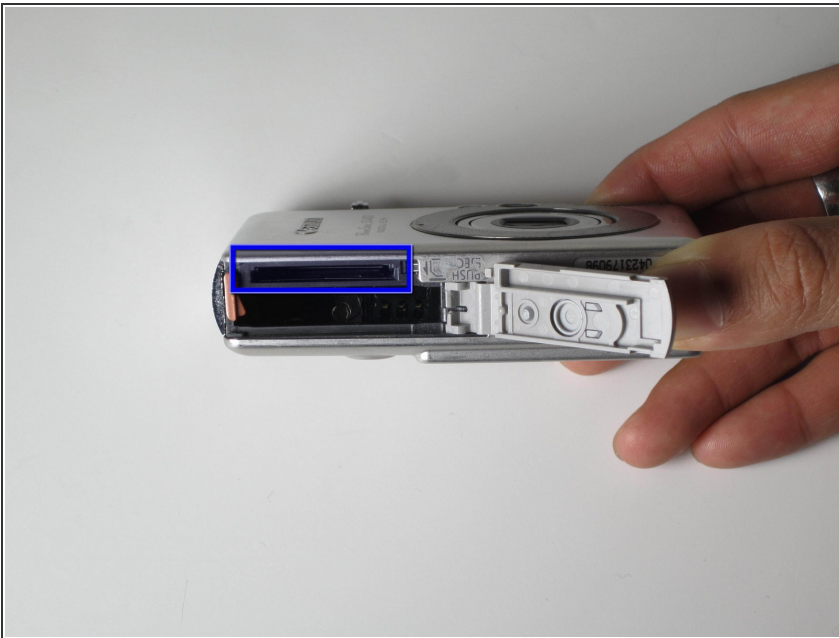


Step 1 — Memory Card



- Slide the battery cover open (indicated by the blue box).

Step 2



- Push down the memory card (indicated by the blue box) gently. The memory card will pop up on its own.
- Insert the new memory card, and close the battery cover.

To reassemble your device, follow these instructions in reverse order.