



# Canon PowerShot SD450 Flash Bulb

Written By: Sean Whelan



---

# INTRODUCTION

This guide will show you how to replace the flash bulb.



## TOOLS:

- [Phillips #00 Screwdriver](#) (1)
  - [Spudger](#) (1)
  - [Tweezers](#) (1)
-

## Step 1 — Casing



- ⚠ Remove the battery and SD Card from their slots. Leaving these in could cause the battery to ground and ruin the electronics.
- Unscrew the six screws on the casing. Two are on the bottom as pictured; two more are on each side of the camera.

## Step 2



- Pull the lanyard mount off of the camera using a spudger or your fingers.

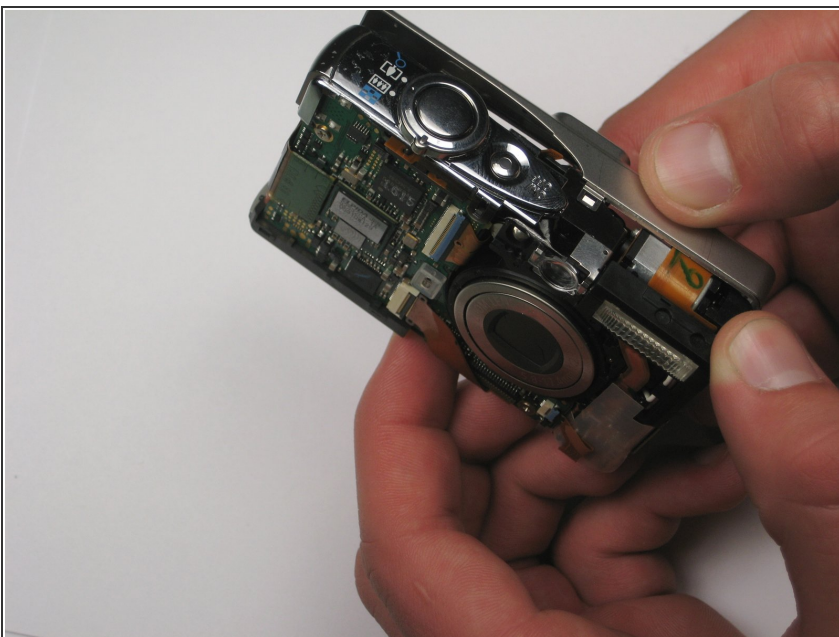


### Step 3



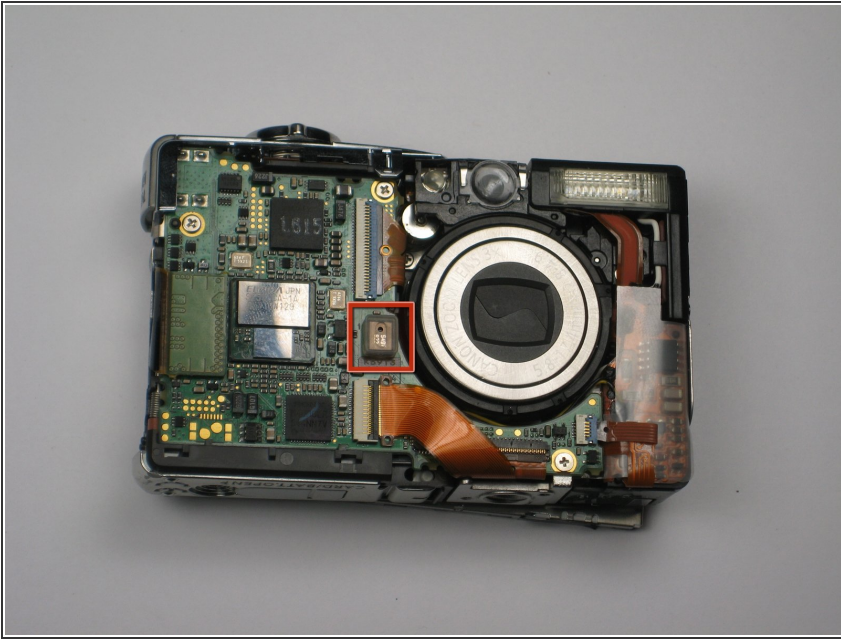
- Find the line that separates the casing into its two halves. Hold each half separately, and gently pull apart.
- Note that there is a small metal clip holding the two halves together. It might help to press down on the back half (indicated) while pulling upward slightly on the front half.

### Step 4



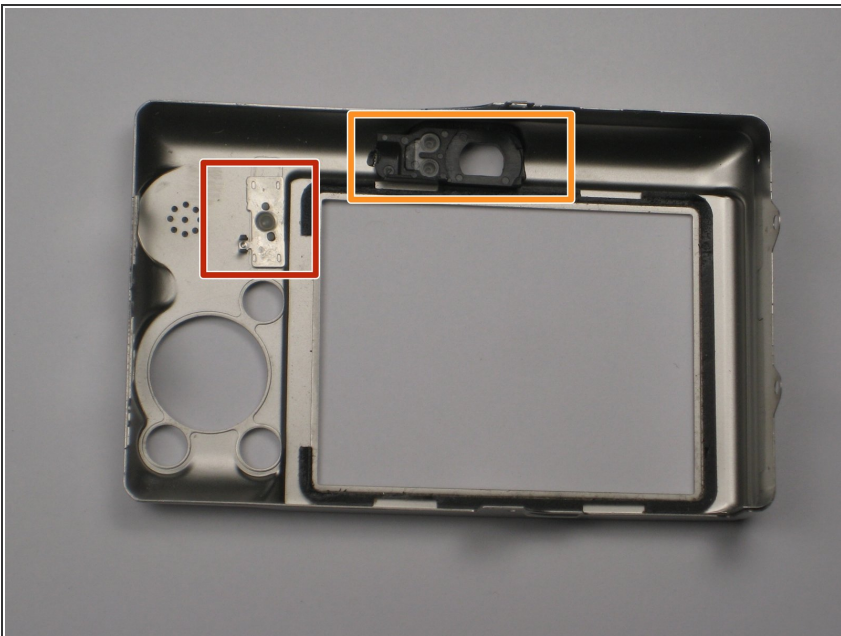
- Take hold of the inside of the camera, and gently pull away from the back casing.

## Step 5



- Remove the square, clear, rubber protector from the front of the logic board. This is not necessary to remove, but can easily fall off and get lost during later steps.

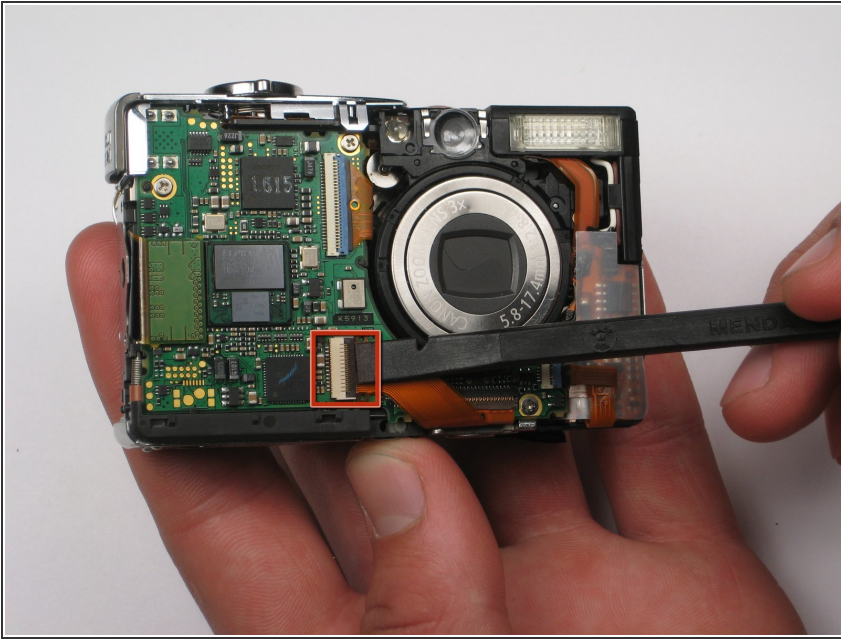
## Step 6



- When you reassemble the camera, make sure the switch on the casing matches the position of the switch on the camera internals.
- The black viewfinder padding can easily fall off the casing. Make sure you don't lose it when moving around parts.

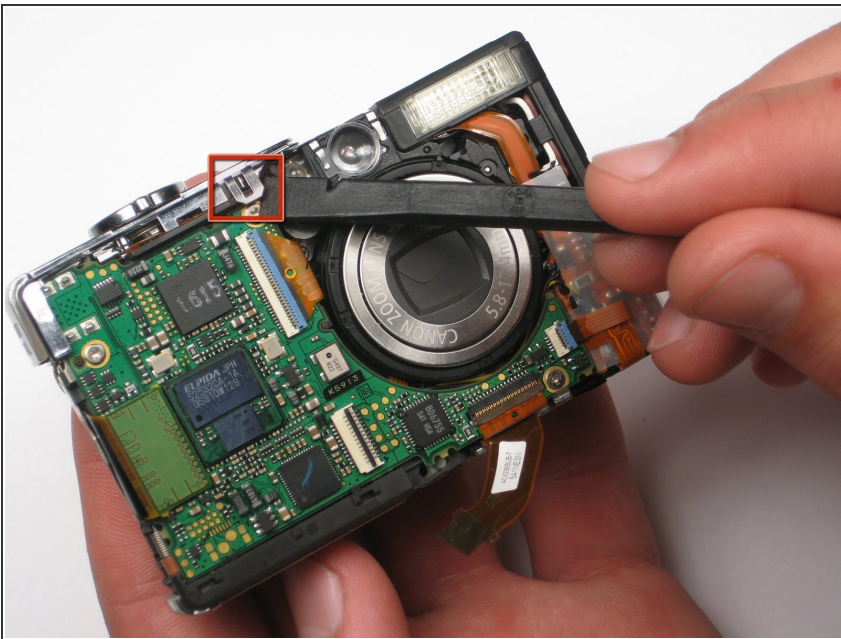


## Step 7 — Logic Board



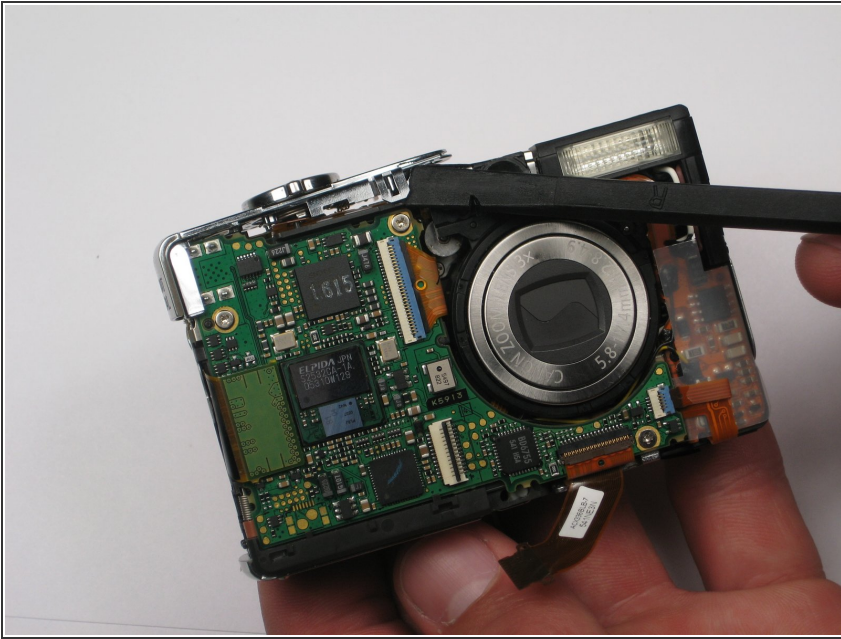
- Remove the LCD cable by gently prying the hinge open with a spudger or your finger. The cable should easily slide out.

## Step 8



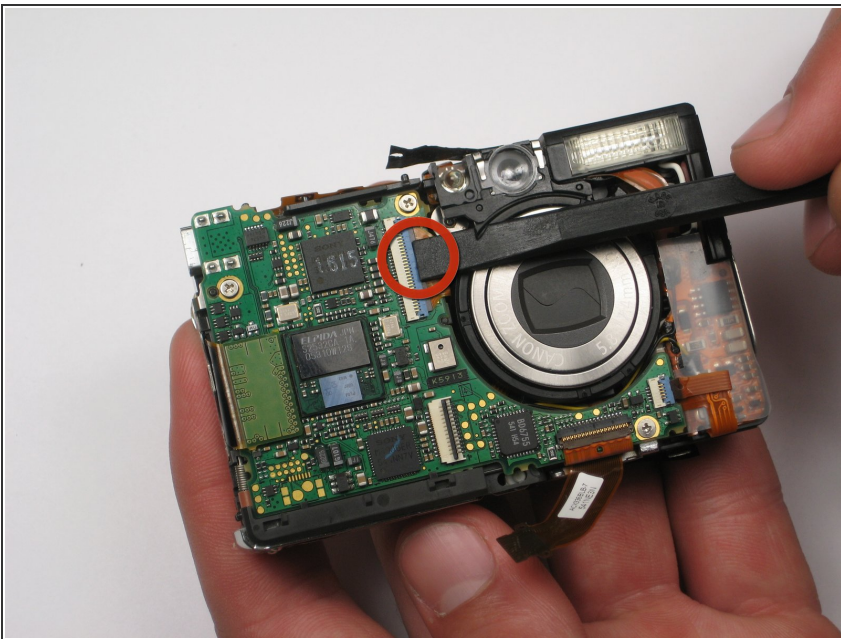
- Lift up the metallic-colored clip with the spudger to remove the shutter panel.

## Step 9



- Remove the shutter panel with the spudger, now that the clip is released.

## Step 10



- Use the spudger or your finger to release the orange ribbon from the logic board.

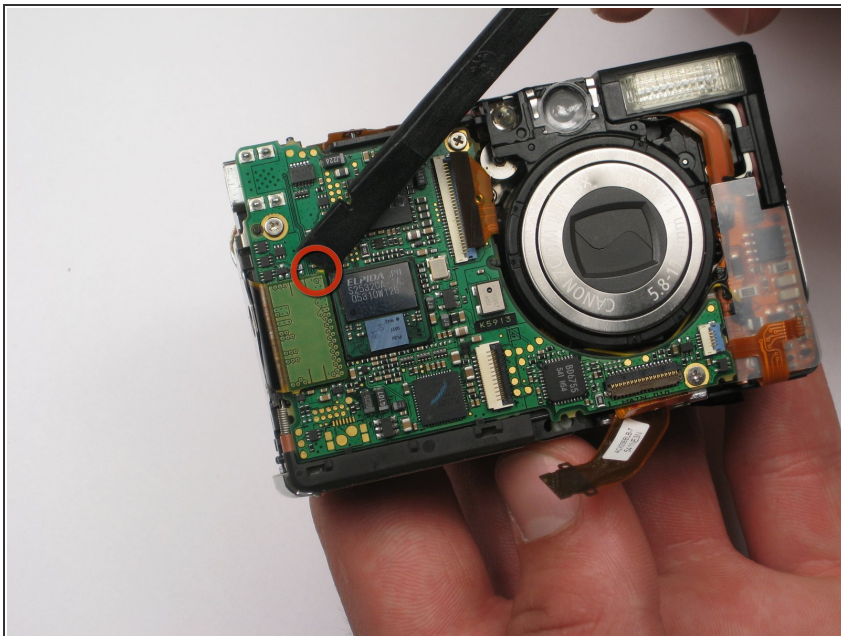


## Step 11



- Pull the ribbon out of the socket using the spudger or your finger.
- Disconnect the two other ribbons from the logic board in the same fashion.

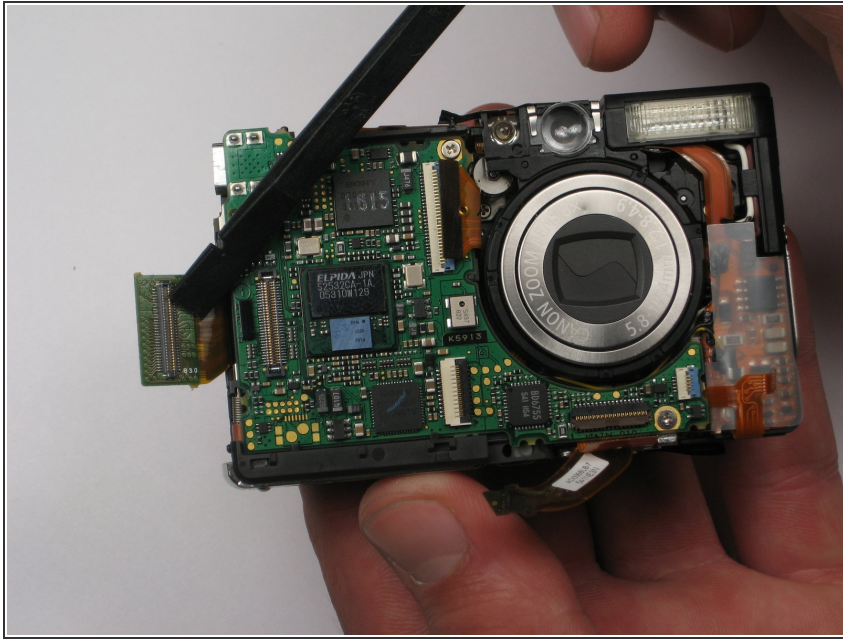
## Step 12



- Lift up the large green flap by using the spudger to pry up top right yellow edge.

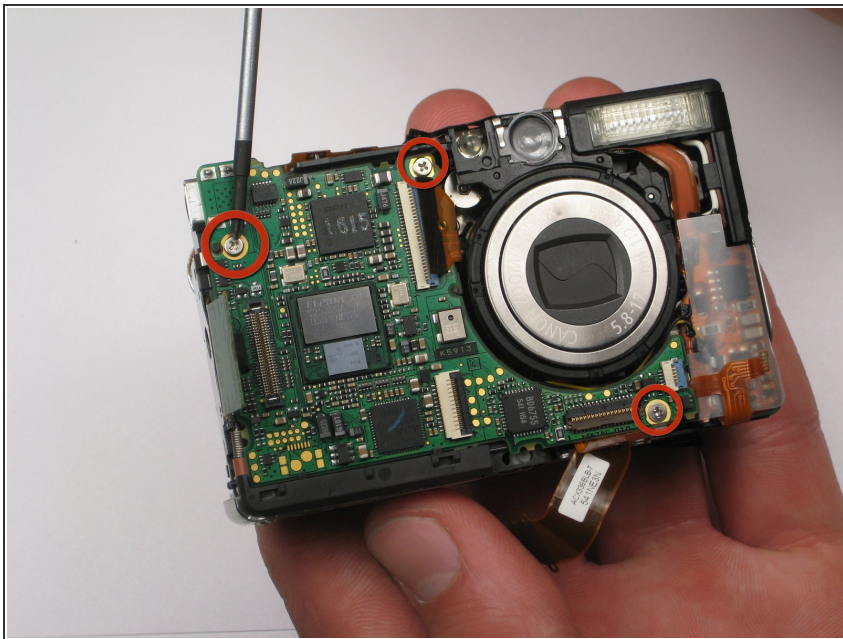


## Step 13



- Pull the flap back with the spudger so that the logic board is exposed.

## Step 14



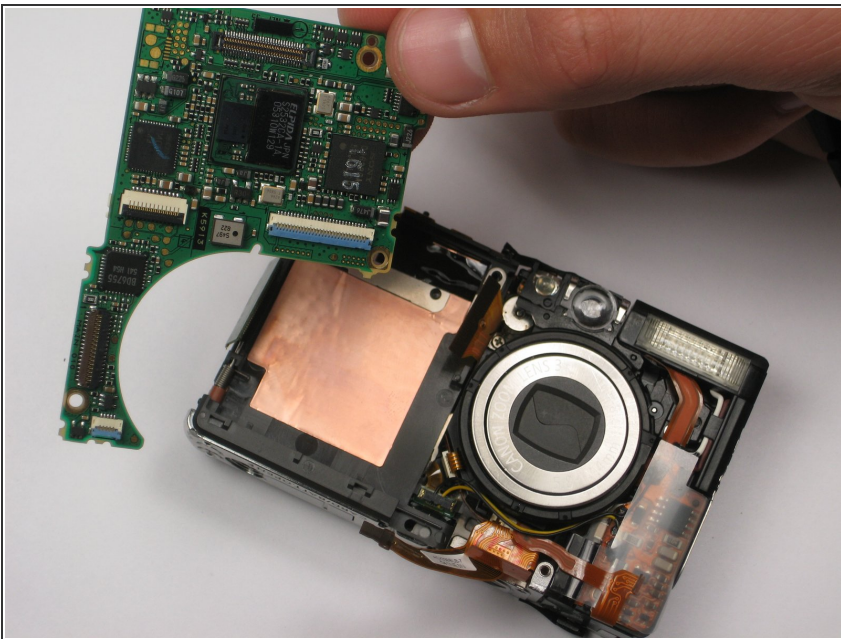
- Use the screwdriver to remove the three screws on the logic board. Take note that the bottom right screw is shorter than the other two.

## Step 15



- Use the spudger to carefully remove the logic board from behind.

## Step 16



- Remove the detached logic board from the camera.

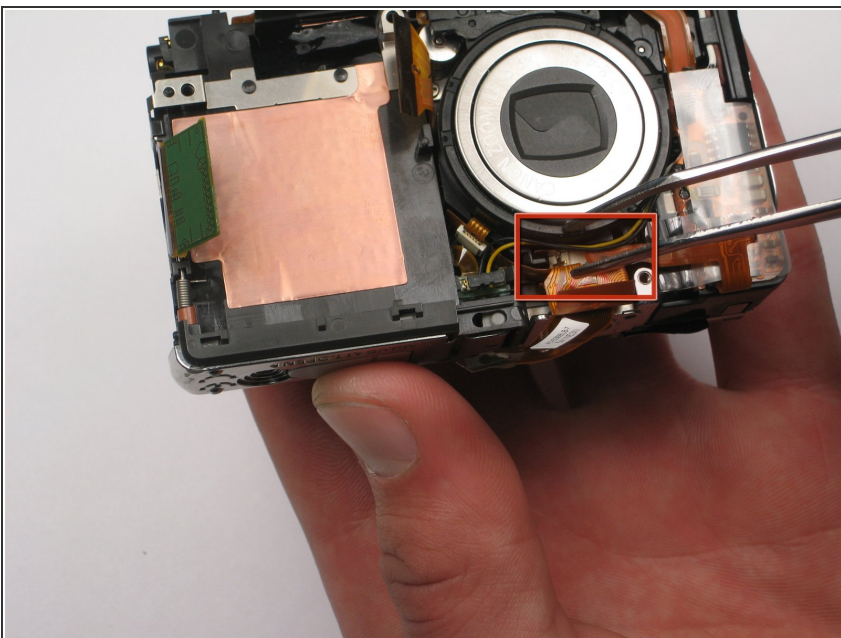


## Step 17 — Flash Bulb



- Remove the side screw holding the flash bulb.

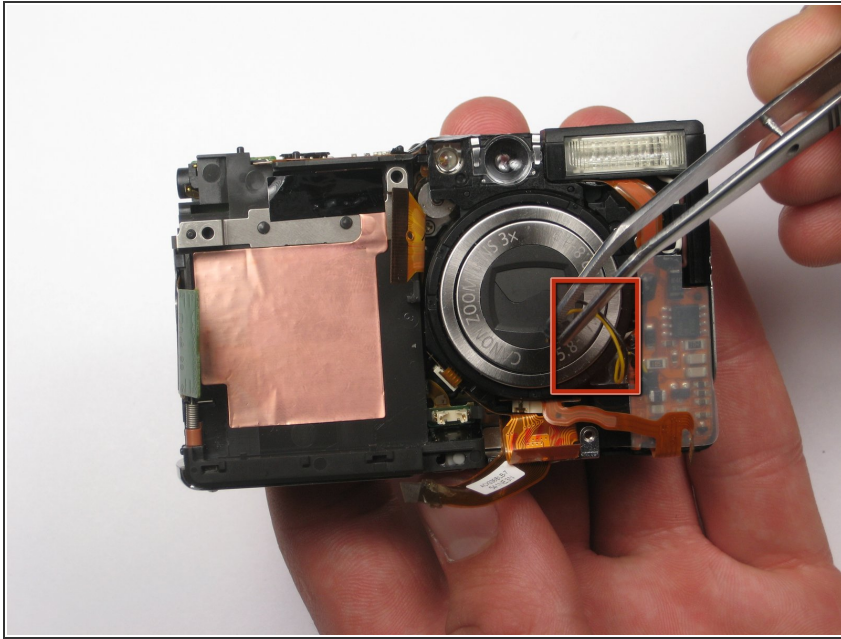
## Step 18



- Remove the orange ribbon from below the lens.

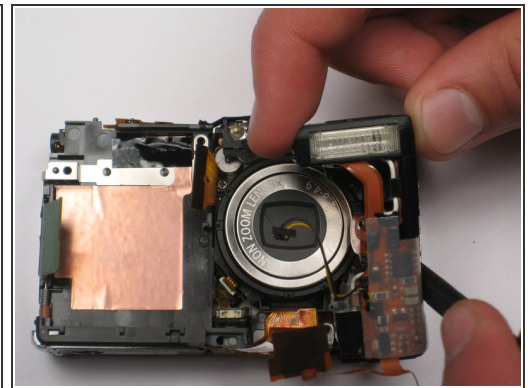
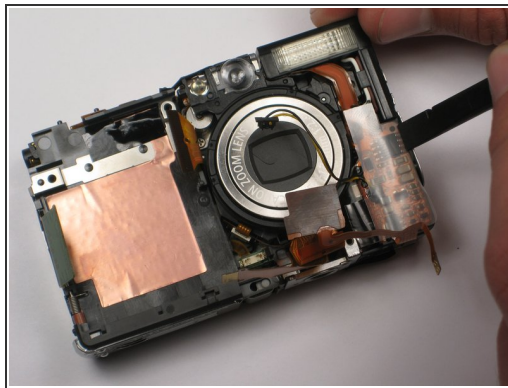
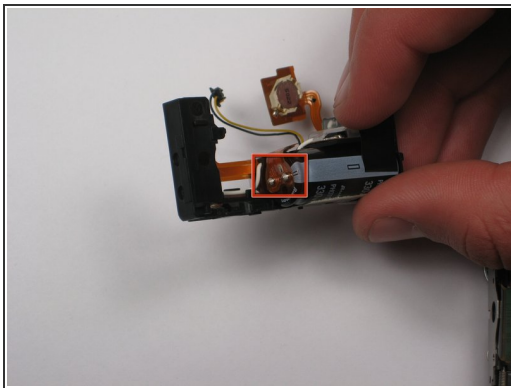


## Step 19



- Grasp the plug that yellow and black wires are attached to, and gently remove. Tweezers are very helpful here.

## Step 20



**⚠** Note that there is a capacitor in the flash bulb assembly, under the small circuit board. Do not touch the two metal terminals, as the capacitor may discharge. Damage and personal injury may result.

- Use the spudger to carefully lift the flash bulb out.

To reassemble your device, follow these instructions in reverse order.