



Canon PowerShot SD450 LCD Screen Replacement

Written By: Pierre Teplitxky



INTRODUCTION

Removing the LCD screen for replacement.



TOOLS:

- [Phillips #00 Screwdriver](#) (1)
 - [Spudger](#) (1)
-

Step 1 — Casing



- ⚠ Remove the battery and SD Card from their slots. Leaving these in could cause the battery to ground and ruin the electronics.
- Unscrew the six screws on the casing. Two are on the bottom as pictured; two more are on each side of the camera.

Step 2



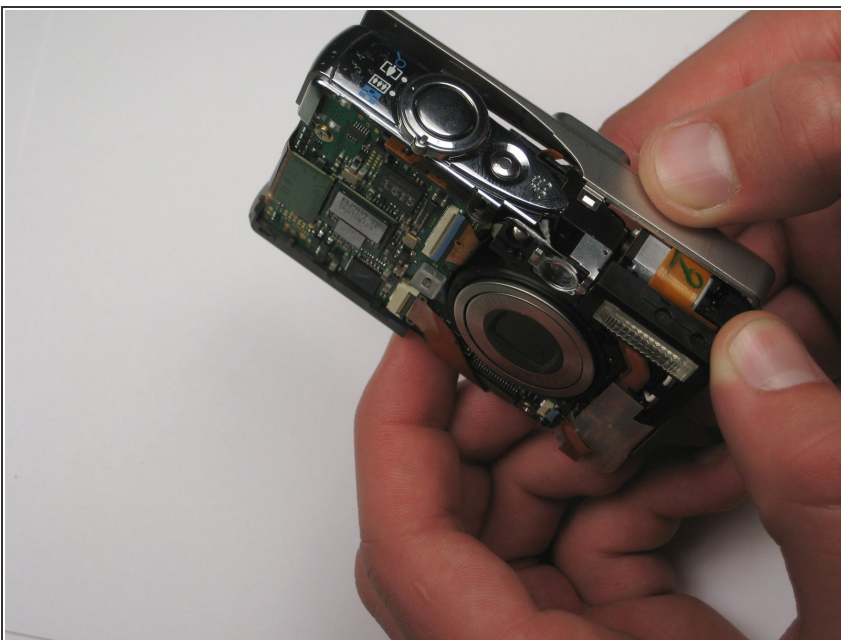
- Pull the lanyard mount off of the camera using a spudger or your fingers.

Step 3



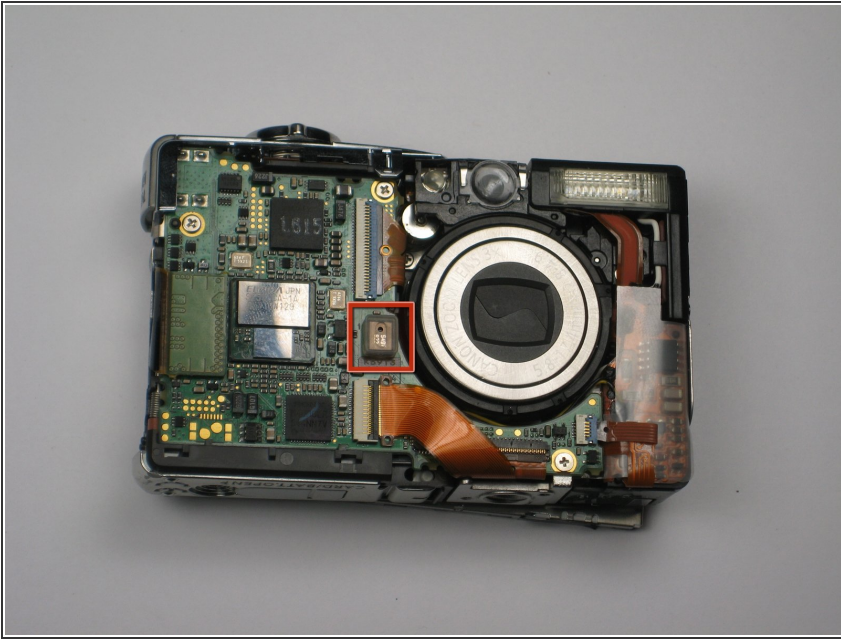
- Find the line that separates the casing into its two halves. Hold each half separately, and gently pull apart.
- Note that there is a small metal clip holding the two halves together. It might help to press down on the back half (indicated) while pulling upward slightly on the front half.

Step 4



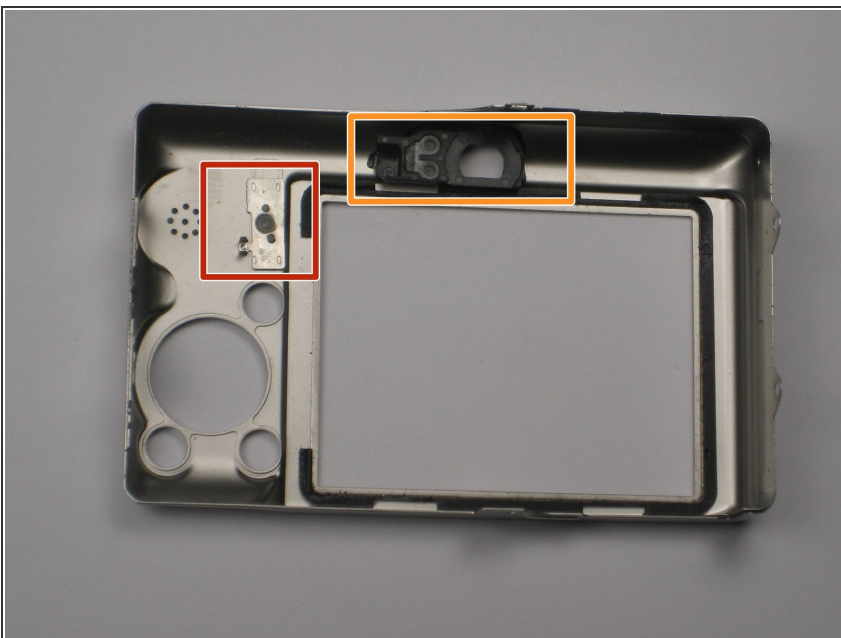
- Take hold of the inside of the camera, and gently pull away from the back casing.

Step 5



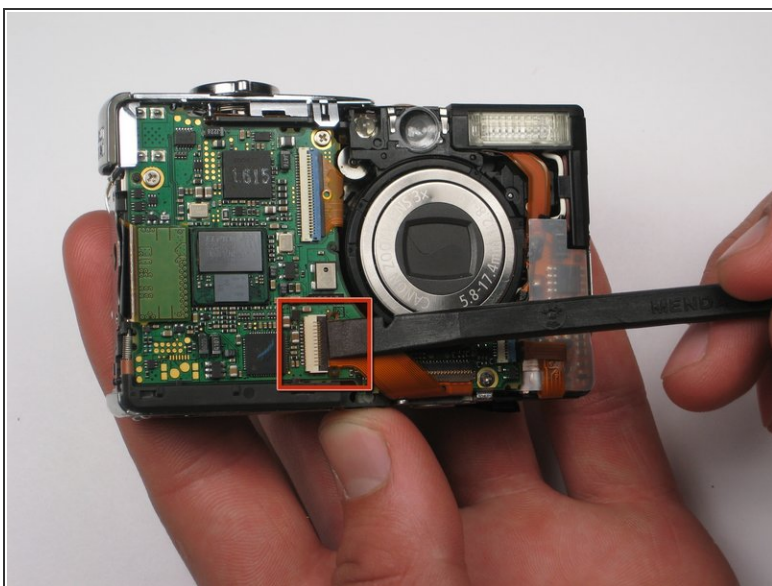
- Remove the square, clear, rubber protector from the front of the logic board. This is not necessary to remove, but can easily fall off and get lost during later steps.

Step 6



- When you reassemble the camera, make sure the switch on the casing matches the position of the switch on the camera internals.
- The black viewfinder padding can easily fall off the casing. Make sure you don't lose it when moving around parts.

Step 7 — LCD Screen



- Pull the retaining clip up with the spudger or your finger and remove the ribbon from the socket.

Step 8



- Remove the tripod mount screw.
- Turn the camera around so that the screen is facing you, and the camera is upright.

Step 9



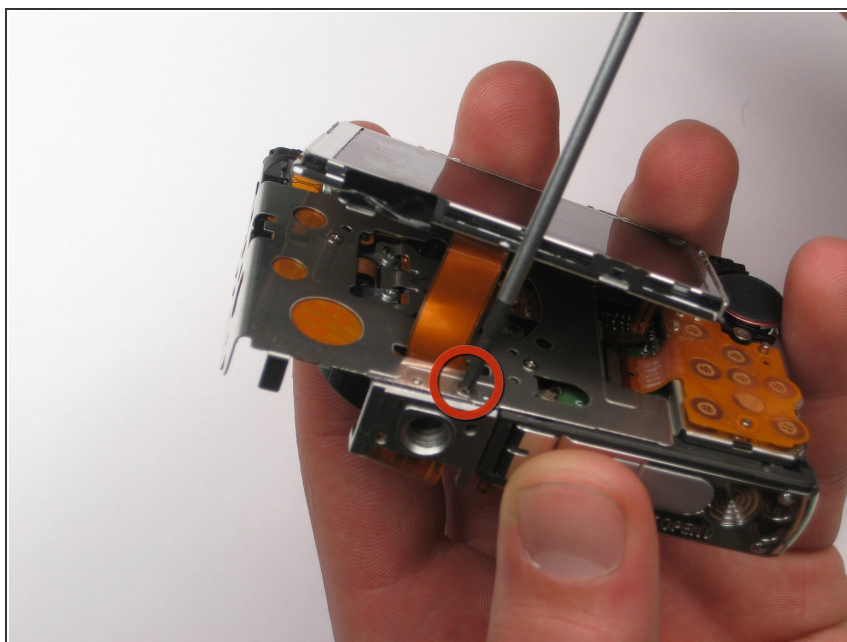
- Remove the screw at the top right of the screen.

Step 10



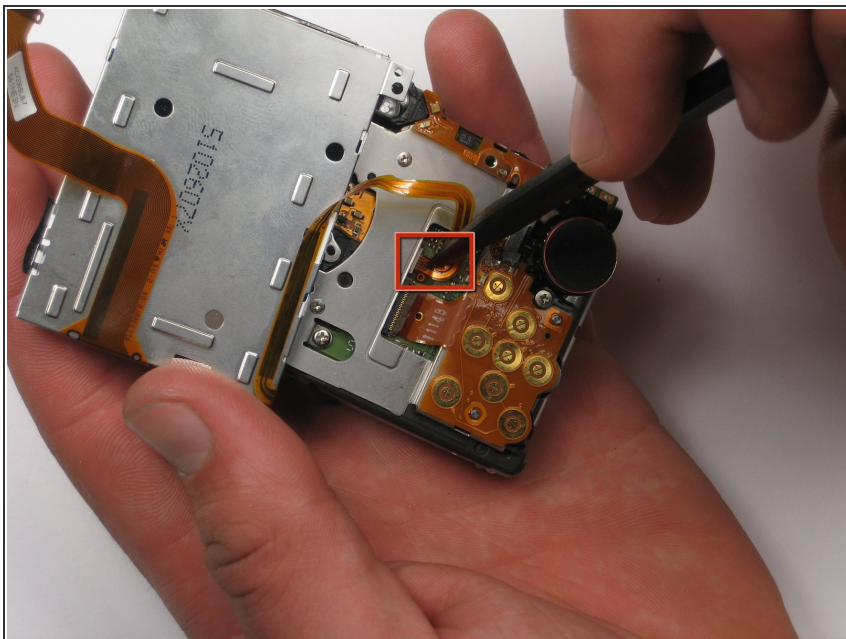
- Lift up the screen to reveal the tripod mount screw.

Step 11



- Remove the last screw holding the tripod mount to the case. The LCD ribbon threads under the mount, so upon reinstallation, the ribbon will need to be threaded through before the mount is reattached. Take note of the tripod mount orientation.

Step 12



- Pull the back light ribbon from it's socket to remove the LCD completely. There is a little hole you can stick the spudger into to help release the ribbon.

To reassemble your device, follow these instructions in reverse order.