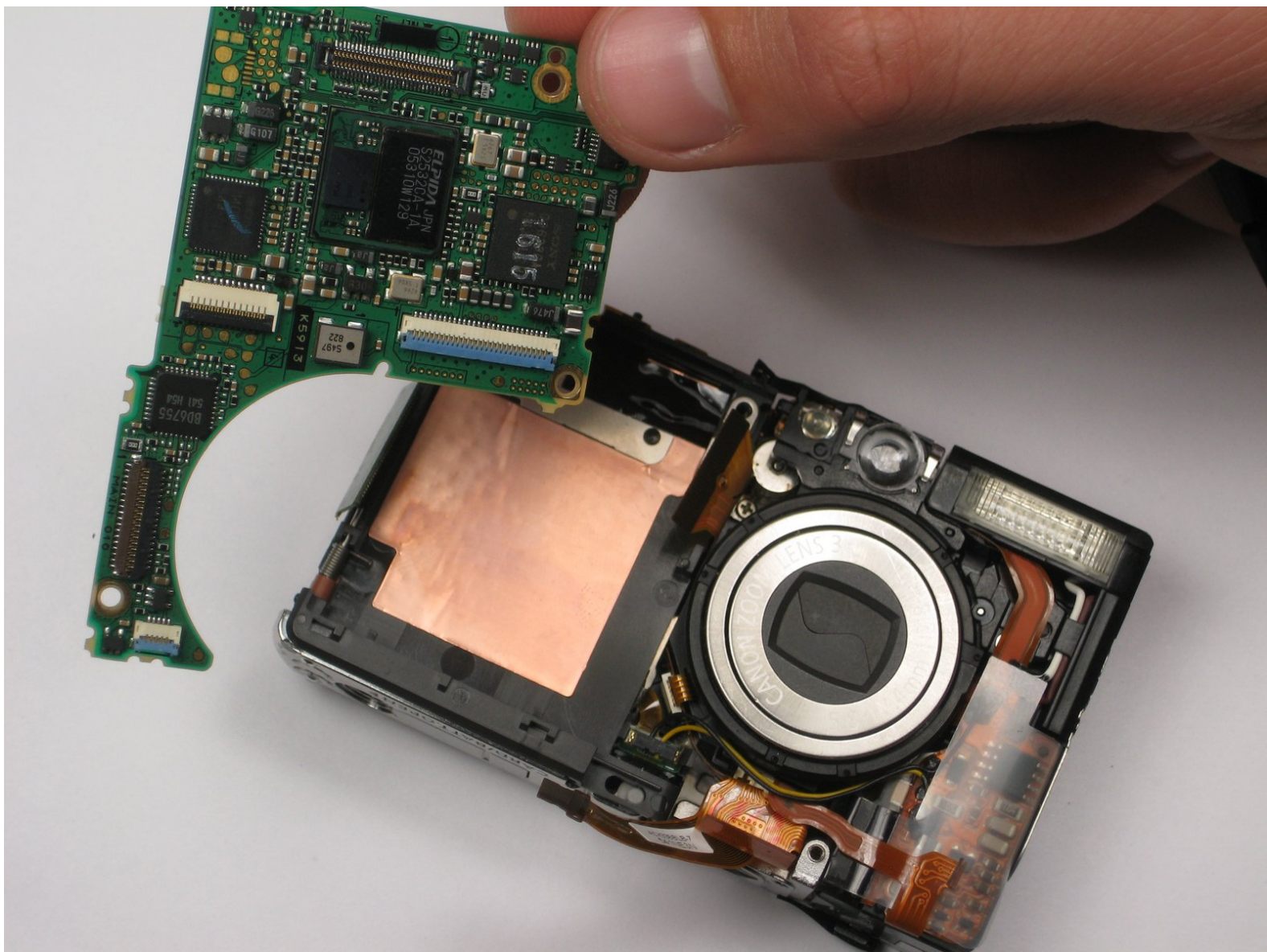




Canon PowerShot SD450 Logic Board Replacement

Written By: Chris Wren



INTRODUCTION

This guide shows the user how to take out the logic board, and therefore have the opportunity to replace a defective board.



TOOLS:

- [Phillips #00 Screwdriver](#) (1)
 - [Spudger](#) (1)
-

Step 1 — Casing



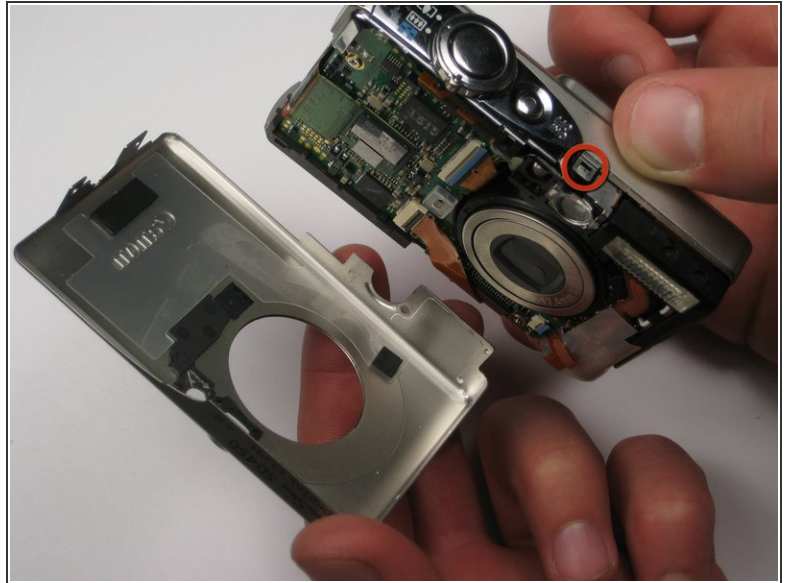
- ⚠ Remove the battery and SD Card from their slots. Leaving these in could cause the battery to ground and ruin the electronics.
- Unscrew the six screws on the casing. Two are on the bottom as pictured; two more are on each side of the camera.

Step 2



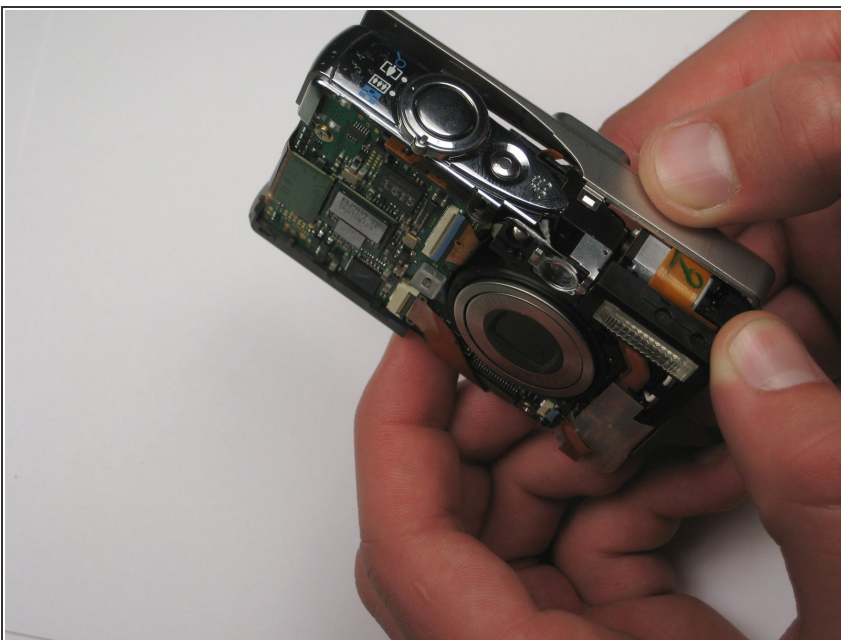
- Pull the lanyard mount off of the camera using a spudger or your fingers.

Step 3



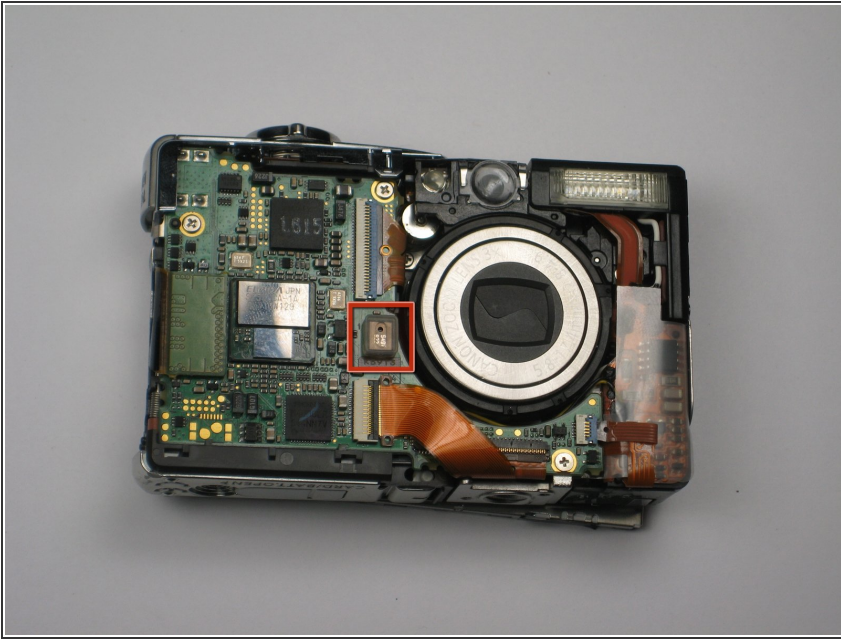
- Find the line that separates the casing into its two halves. Hold each half separately, and gently pull apart.
- Note that there is a small metal clip holding the two halves together. It might help to press down on the back half (indicated) while pulling upward slightly on the front half.

Step 4



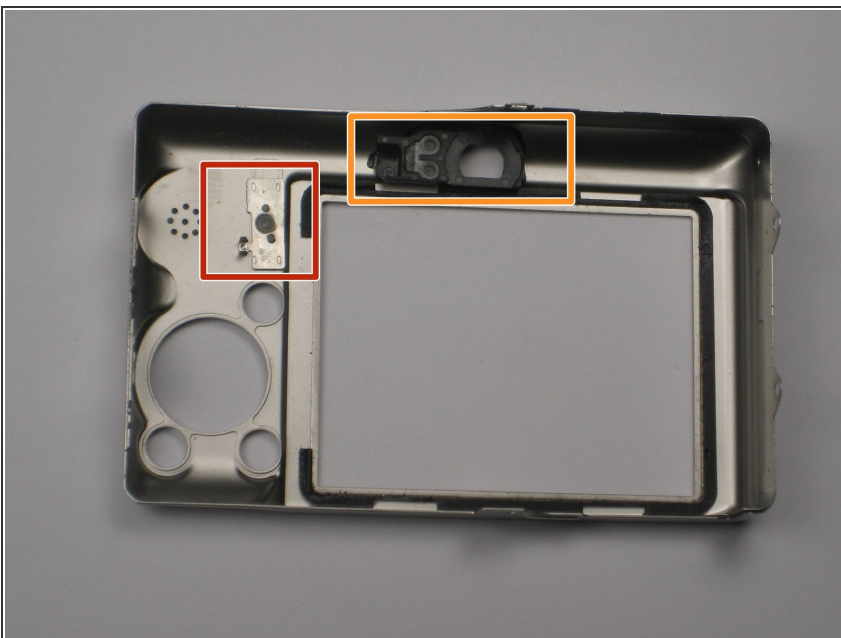
- Take hold of the inside of the camera, and gently pull away from the back casing.

Step 5



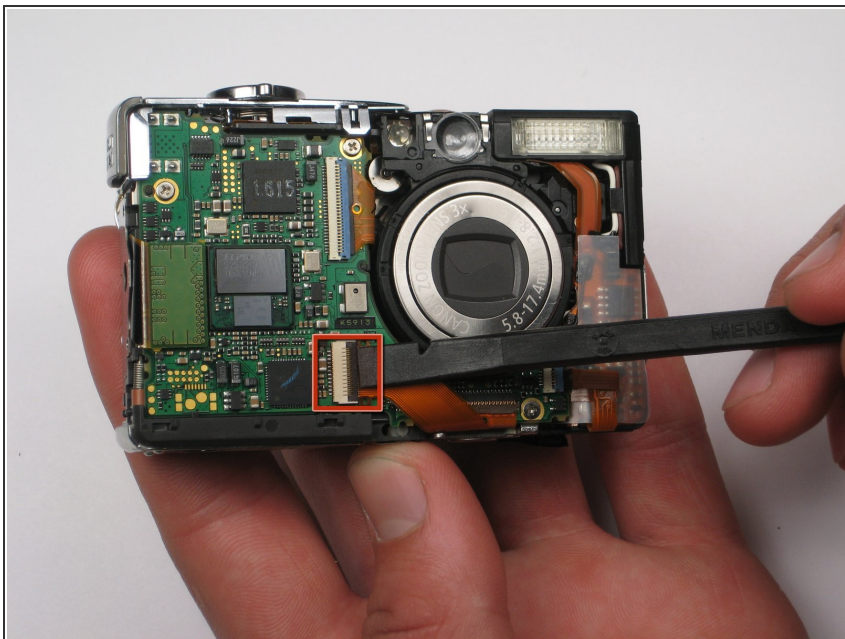
- Remove the square, clear, rubber protector from the front of the logic board. This is not necessary to remove, but can easily fall off and get lost during later steps.

Step 6



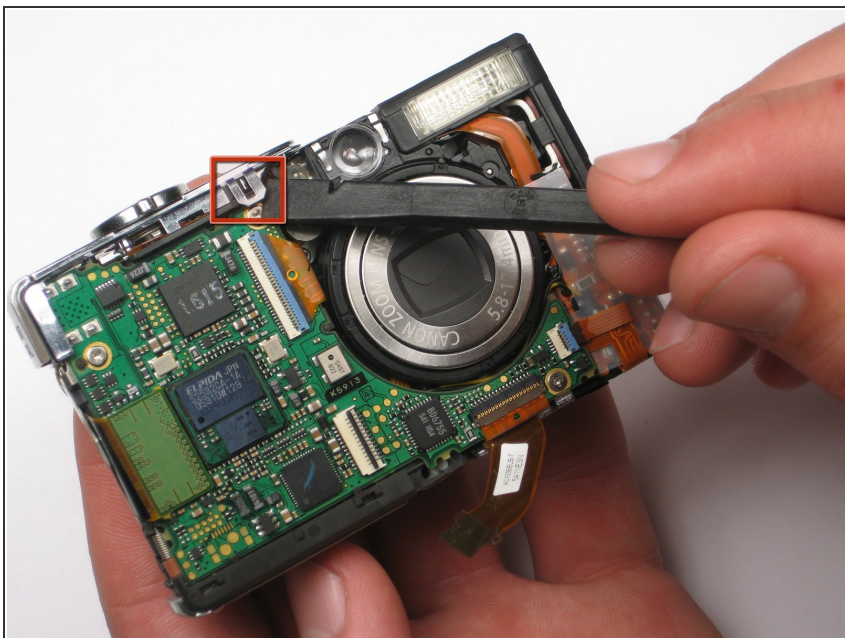
- When you reassemble the camera, make sure the switch on the casing matches the position of the switch on the camera internals.
- The black viewfinder padding can easily fall off the casing. Make sure you don't lose it when moving around parts.

Step 7 — Logic Board



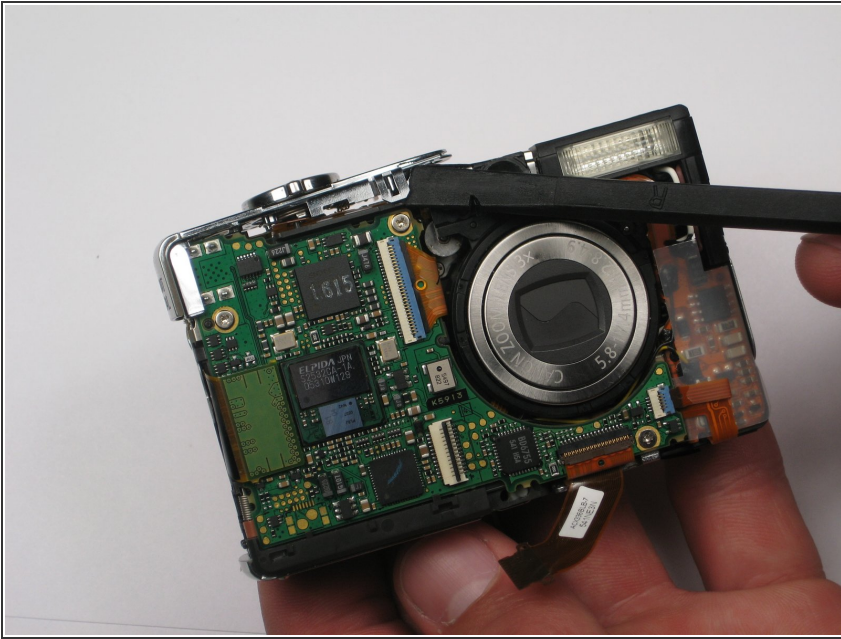
- Remove the LCD cable by gently prying the hinge open with a spudger or your finger. The cable should easily slide out.

Step 8



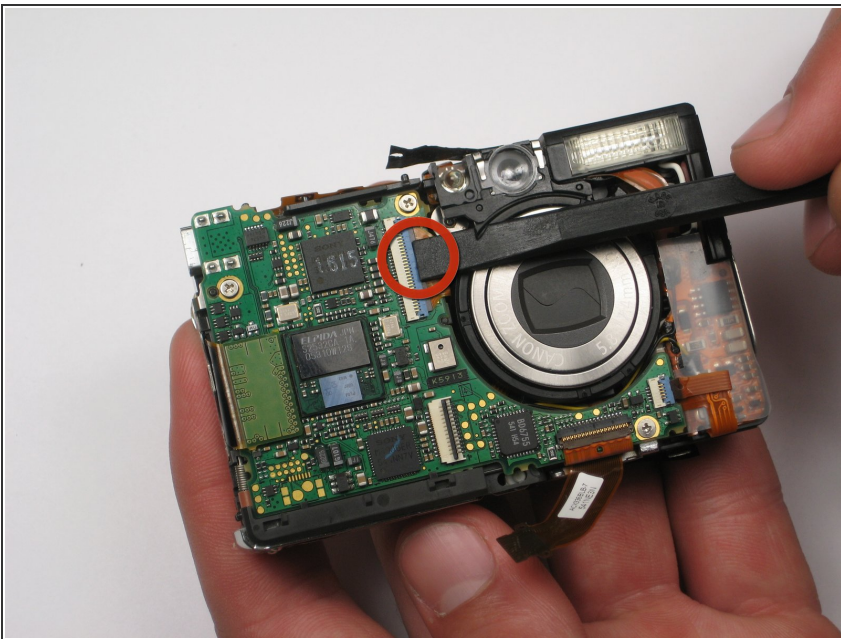
- Lift up the metallic-colored clip with the spudger to remove the shutter panel.

Step 9



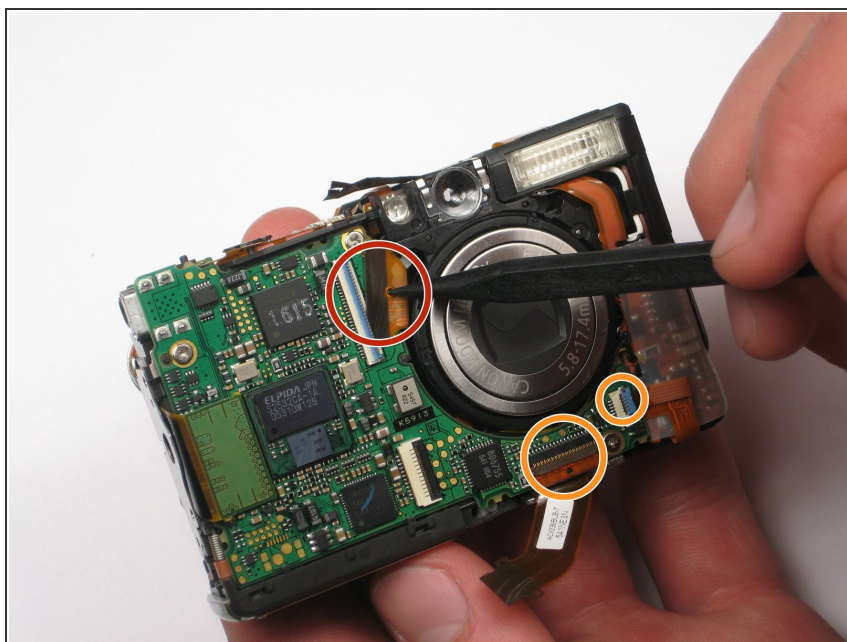
- Remove the shutter panel with the spudger, now that the clip is released.

Step 10



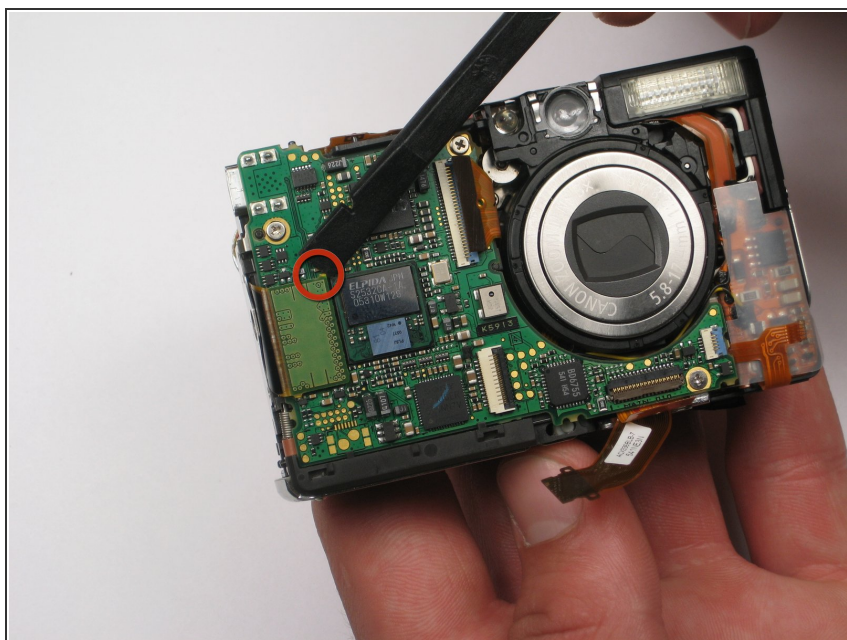
- Use the spudger or your finger to release the orange ribbon from the logic board.

Step 11



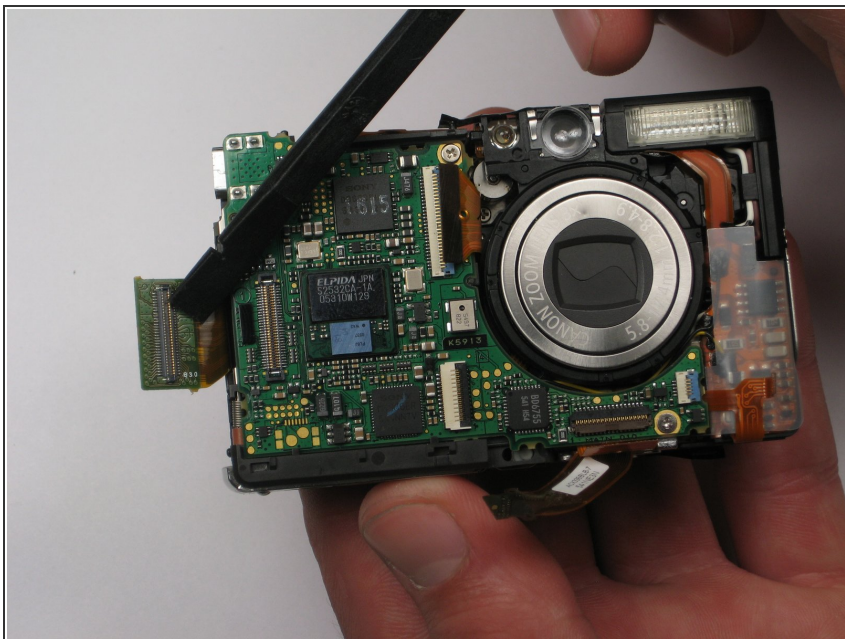
- Pull the ribbon out of the socket using the spudger or your finger.
- Disconnect the two other ribbons from the logic board in the same fashion.

Step 12



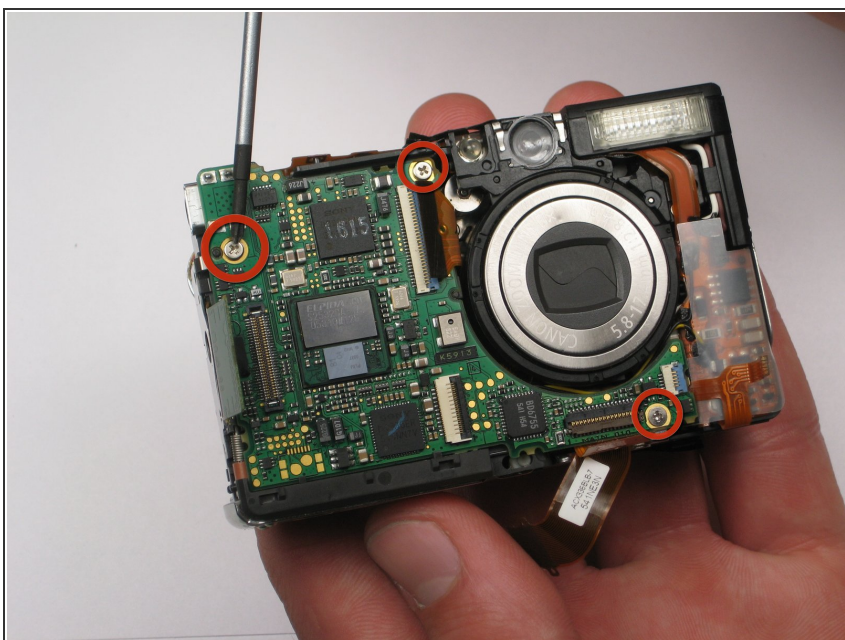
- Lift up the large green flap by using the spudger to pry up top right yellow edge.

Step 13



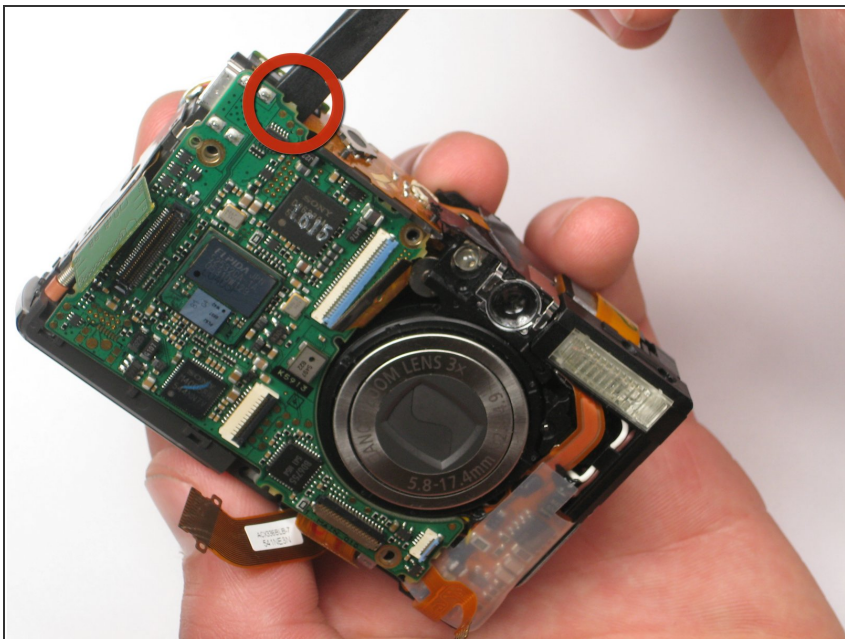
- Pull the flap back with the spudger so that the logic board is exposed.

Step 14



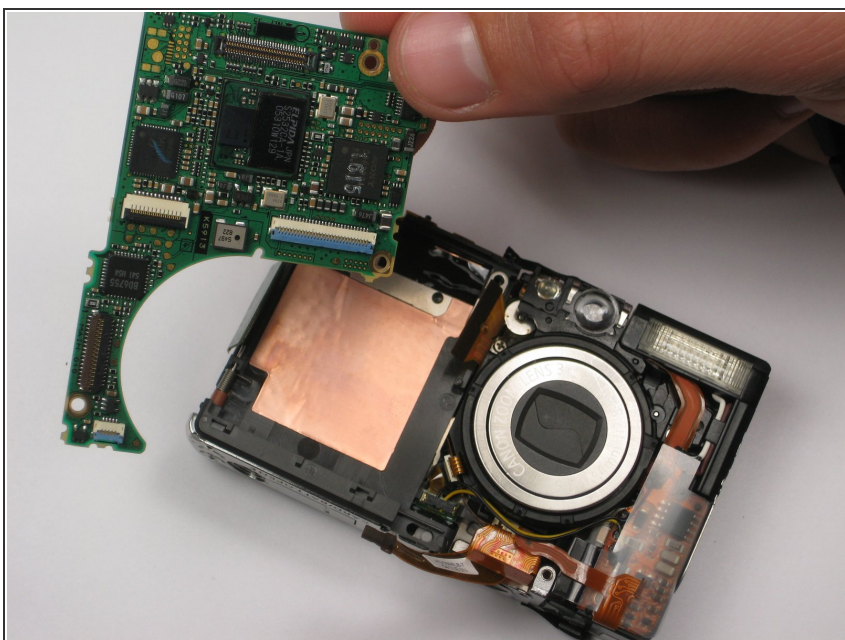
- Use the screwdriver to remove the three screws on the logic board. Take note that the bottom right screw is shorter than the other two.

Step 15



- Use the spudger to carefully remove the logic board from behind.

Step 16



- Remove the detached logic board from the camera.

To reassemble your device, follow these instructions in reverse order.