



Canon PowerShot SD450 Outer Case replacement

How to replace Canon PowerShot SD450 outer case.

Written By: Curtis Wagner



INTRODUCTION

You need to remove the casing before you can start getting into any internal parts of the Camera. This can also be a good start to helping the camera dry out in case of a water accident.

TOOLS:

- [Phillips #00 Screwdriver](#) (1)
 - [Spudger](#) (1)
-

Step 1 — Casing



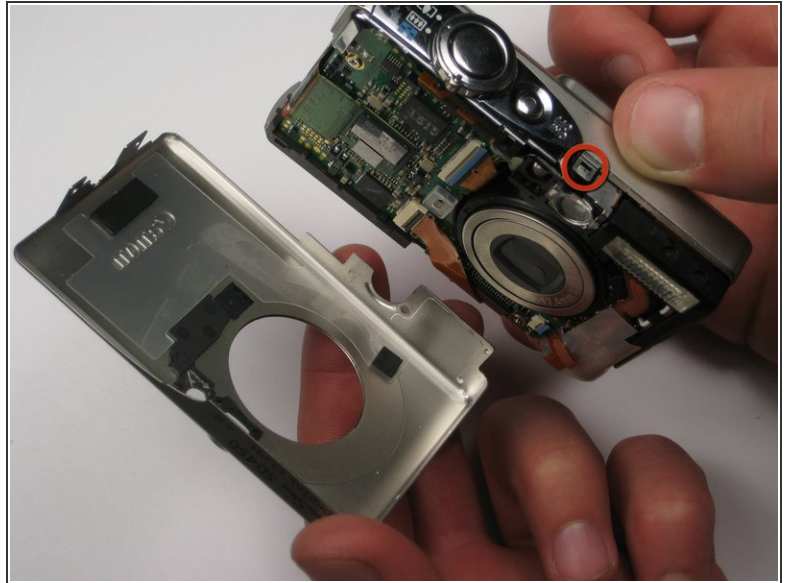
- ⚠ Remove the battery and SD Card from their slots. Leaving these in could cause the battery to ground and ruin the electronics.
- Unscrew the six screws on the casing. Two are on the bottom as pictured; two more are on each side of the camera.

Step 2



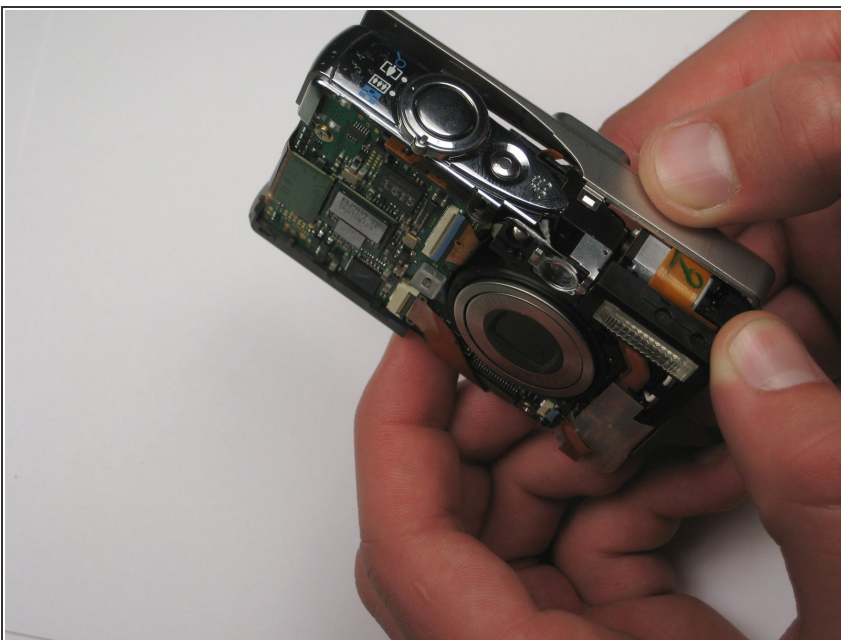
- Pull the lanyard mount off of the camera using a spudger or your fingers.

Step 3



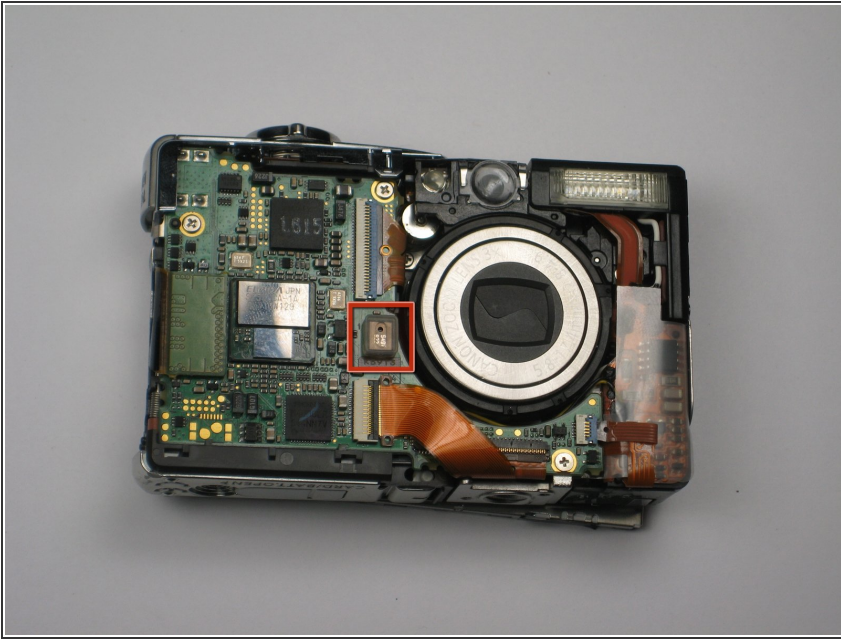
- Find the line that separates the casing into its two halves. Hold each half separately, and gently pull apart.
- Note that there is a small metal clip holding the two halves together. It might help to press down on the back half (indicated) while pulling upward slightly on the front half.

Step 4



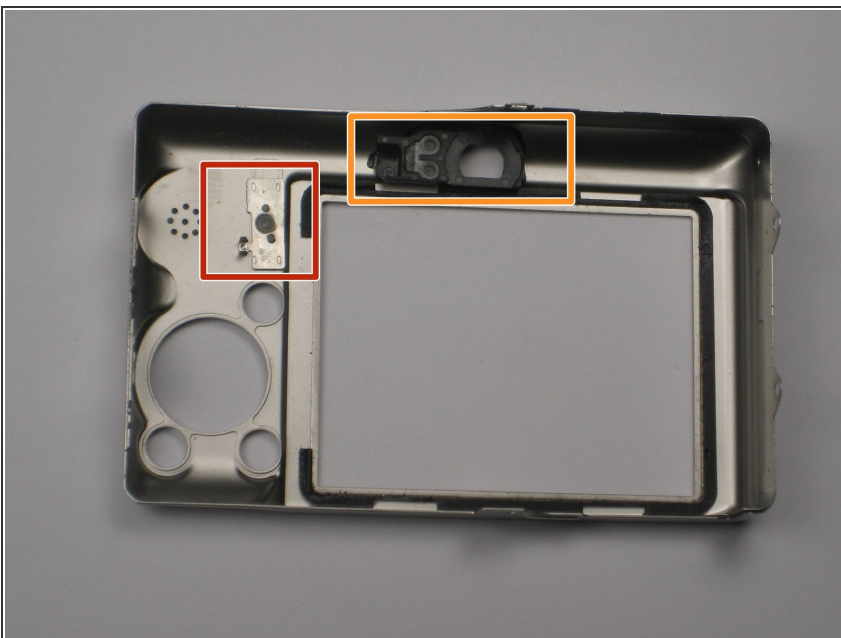
- Take hold of the inside of the camera, and gently pull away from the back casing.

Step 5



- Remove the square, clear, rubber protector from the front of the logic board. This is not necessary to remove, but can easily fall off and get lost during later steps.

Step 6



- When you reassemble the camera, make sure the switch on the casing matches the position of the switch on the camera internals.
- The black viewfinder padding can easily fall off the casing. Make sure you don't lose it when moving around parts.

To reassemble your device, follow these instructions in reverse order.