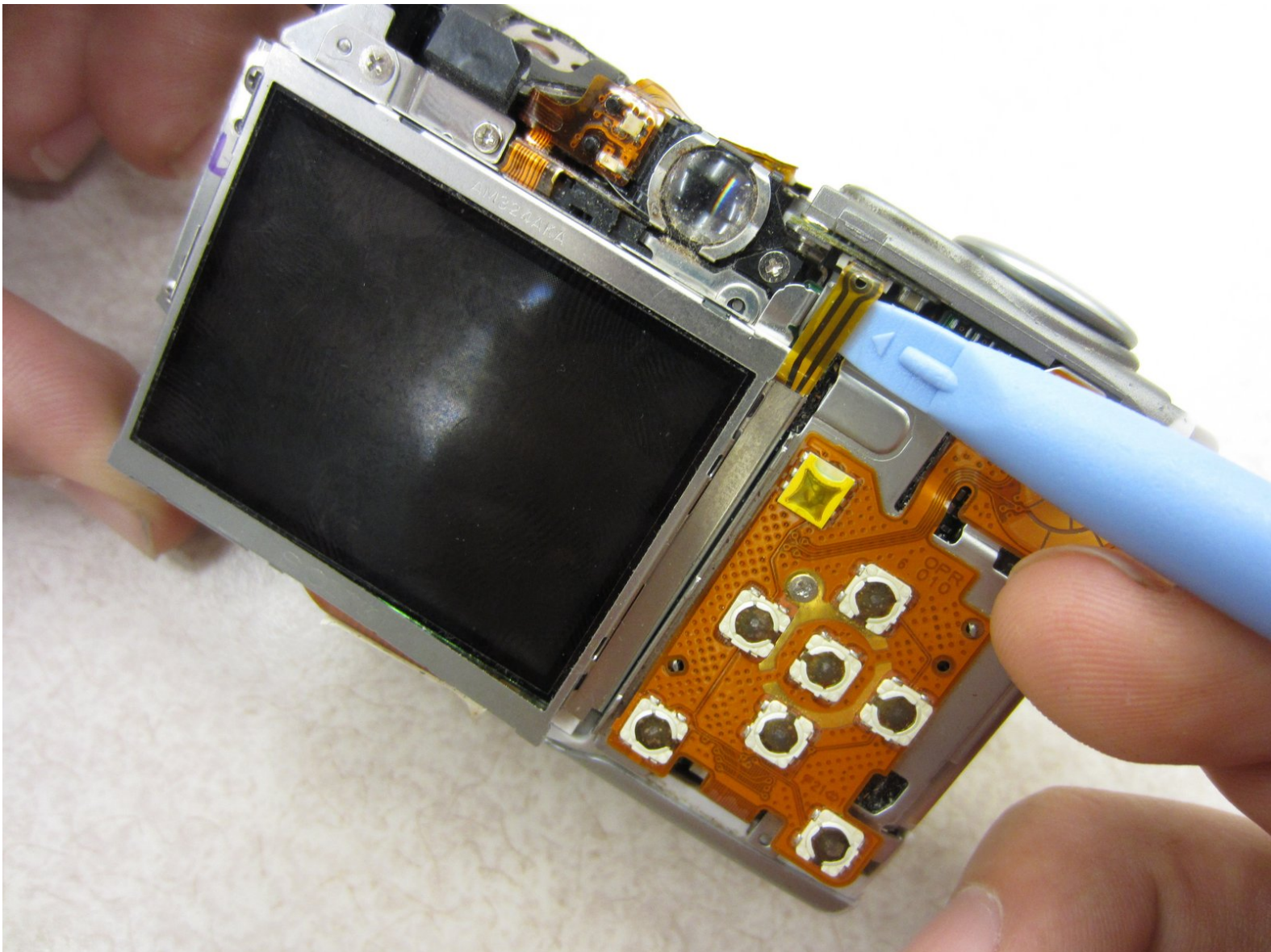




# Canon PowerShot SD500 Digital ELPH Button Contact Panel Replacement

This guide will help you remove the button contact panel of the Powershot SD500 Digital ELPH camera.

Written By: Taylor Shields



## INTRODUCTION

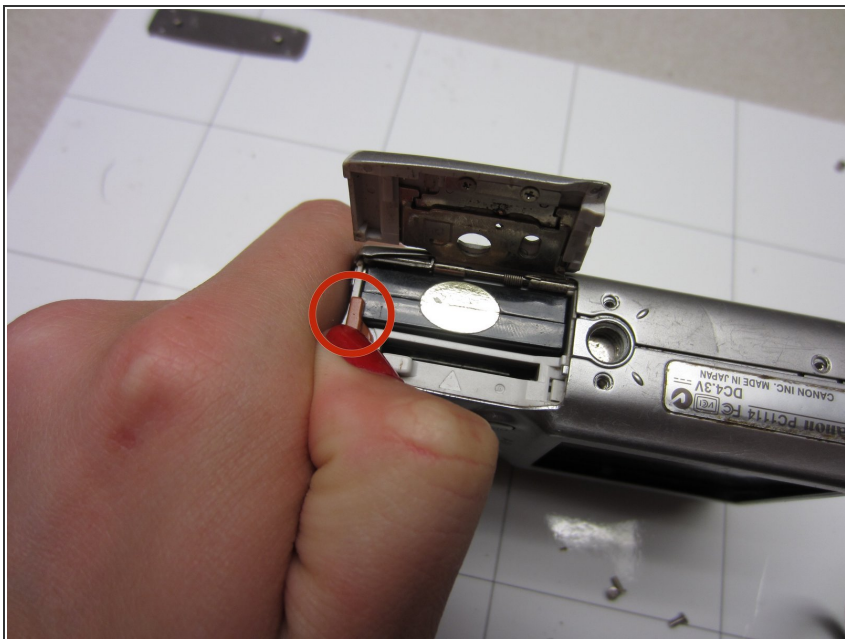
The button contact panel is necessary to perform all functions on the Powershot SD 500 Digital ELPH camera. If the button contact panel is not working, the camera is essentially useless.

---

### TOOLS:

- [iFixit Opening Tools](#) (1)
  - [Phillips #00 Screwdriver](#) (1)
-

## Step 1 — Battery



- Slide open the battery cover.
- Push the small orange tab to the side so the battery can be removed.

## Step 2



- Slide the battery out of the battery compartment.

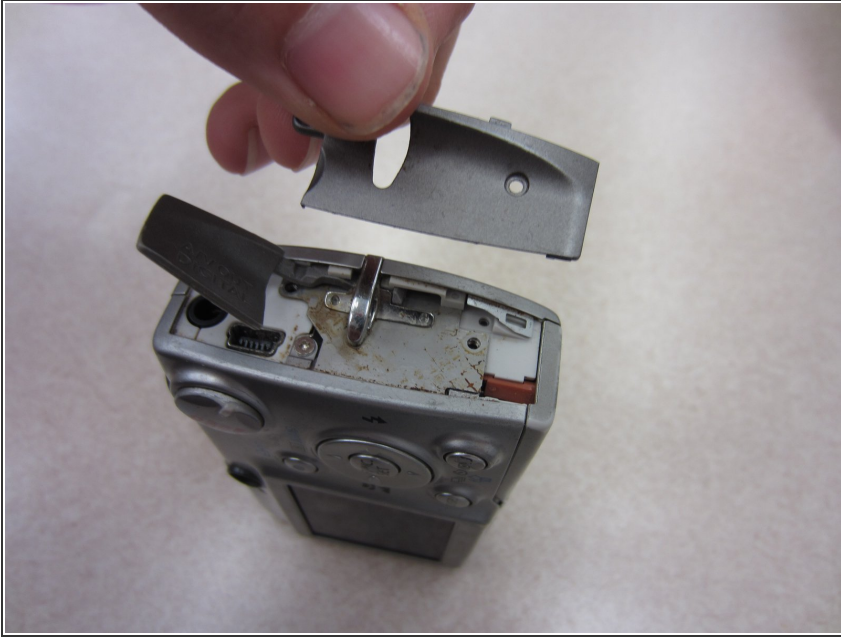


### Step 3 — Front and Rear Casing



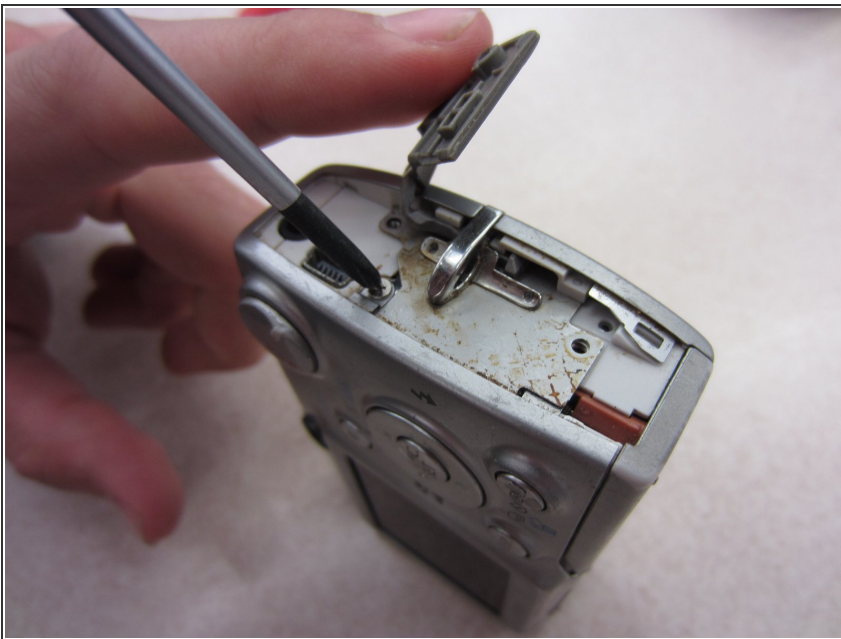
- Two Phillips screws need to be removed using a #00 Phillips screwdriver. The upper screw is under the USB port cover, which can simply be pulled away gently from the casing. the lower screw is visible on the panel.
  - The screws are different sizes. The .125 inch screw is located under the USB port cover. The 0.85 inch screw goes in the lower hole on the panel.
- i** When looking at the back of the camera, these two screws are on the right panel of the camera.

## Step 4



- Remove the right side cover from the camera casing.

## Step 5



- Remove a .07 inch Phillips screw using a #00 Phillips screwdriver.

## Step 6



- Remove two .085 inch Phillips screws from the left side of the camera using a #00 Philips screwdriver.

## Step 7



- Remove the left side cover from the camera.



## Step 8



- Remove three .15 inch Phillips screws from the bottom of the camera using a #00 Phillips screwdriver.

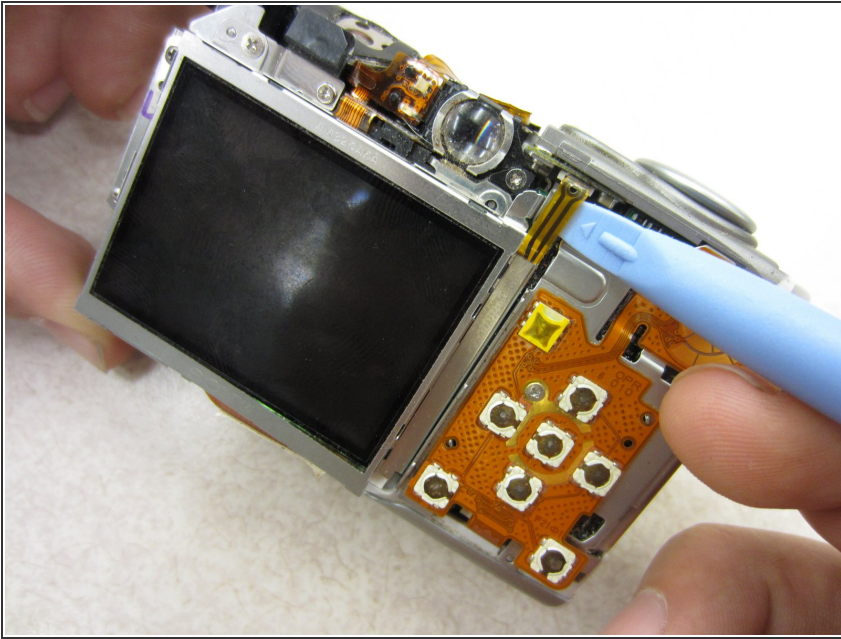
## Step 9



- Once the casing is unscrewed, hold the camera with one side facing down, and lift the opposite face of the casing to open it.
- Remove the internal camera components and layout out all pieces on a clean surface.
- ⓘ The front and back cover may require gentle rocking to remove.

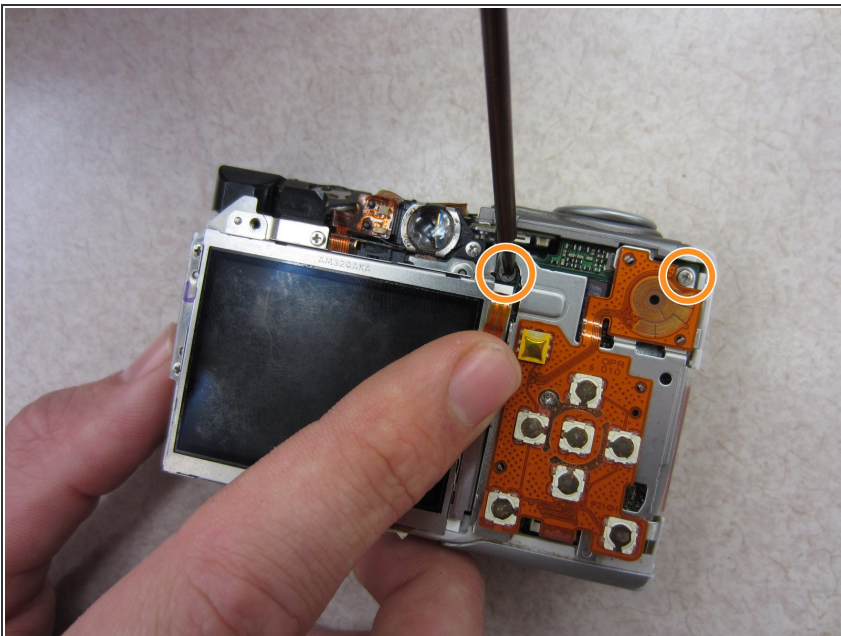
This document was generated on 2019-09-23 08:45:46 AM (MST).

## Step 10 — Button Contact Panel



- Carefully wedge the pry tool under the ribbon in the ribbon gate.
  - Gently remove the ribbon from the ribbon gate by pulling it away from the gate with the pry tool.
- ⚠ Be careful not to damage the ribbon.

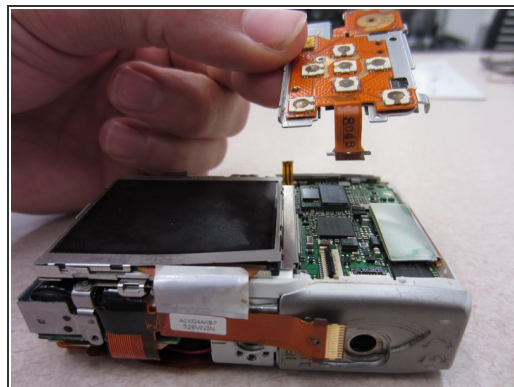
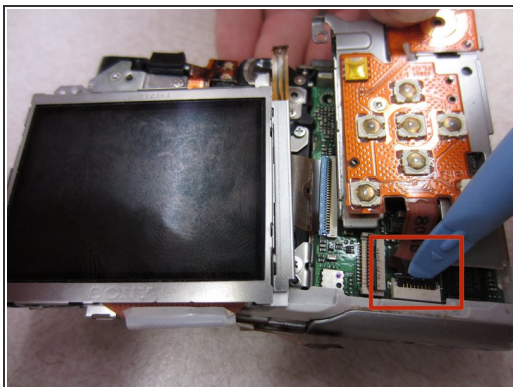
## Step 11



- Gently press the ribbon back to get access to a Phillips screw behind it.
- ⚠ Be careful not to damage the ribbon.
- Unscrew two .125 inch long Phillips screws using a #00 Philips screwdriver.



## Step 12



- Remove the ribbon with a pry tool by gently pulling it out of the ribbon gate tab.

⚠ Be careful not to damage the ribbon.

- Pull the button board away from the rest of the camera.

To reassemble your device, follow these instructions in reverse order.