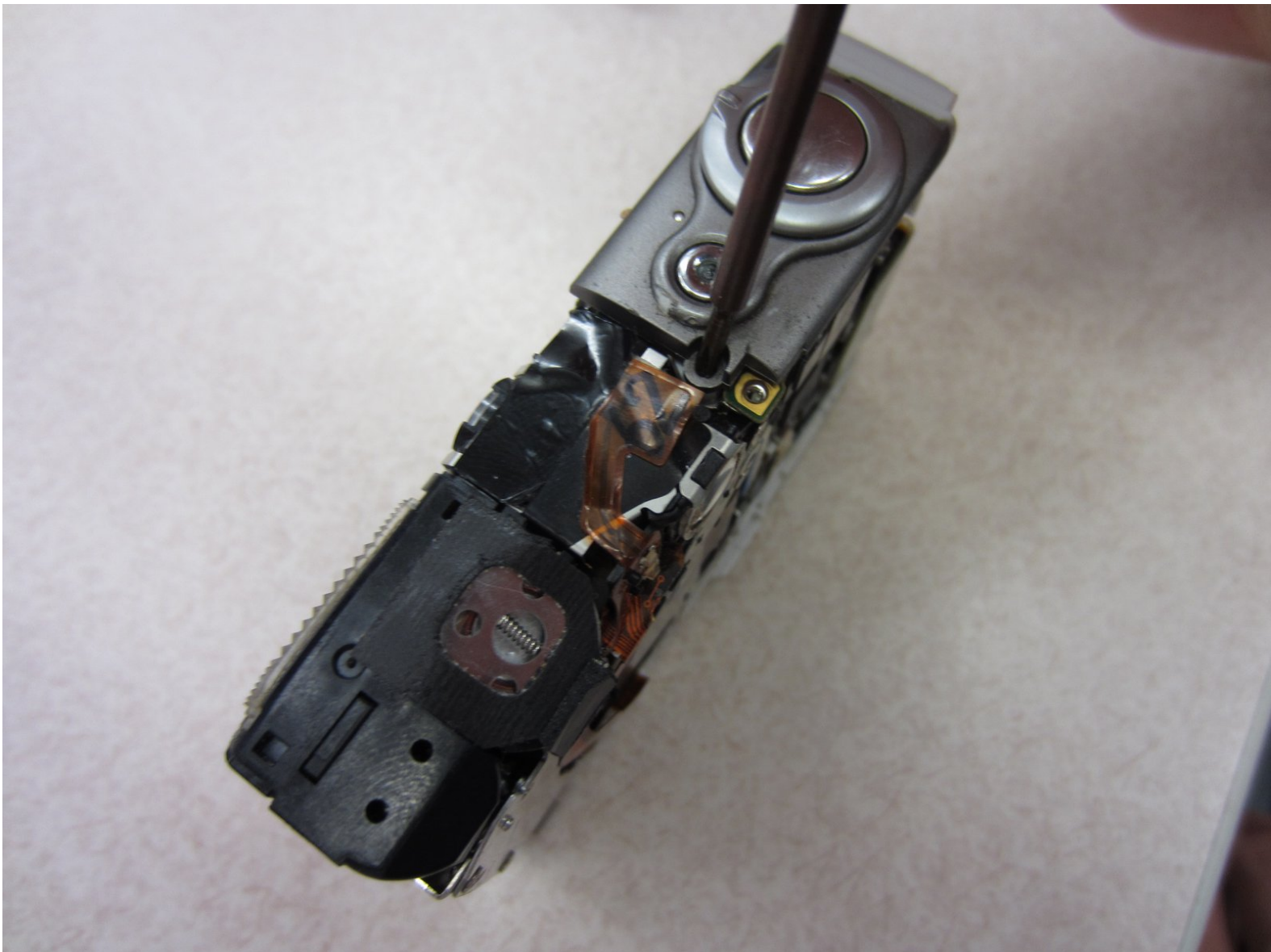




Canon PowerShot SD500 Digital ELPH Shutter Button Replacement

This guide will show you how to disassemble your Powershot SD500 Digital ELPH and install a new shutter button.

Written By: Taylor Shields



INTRODUCTION

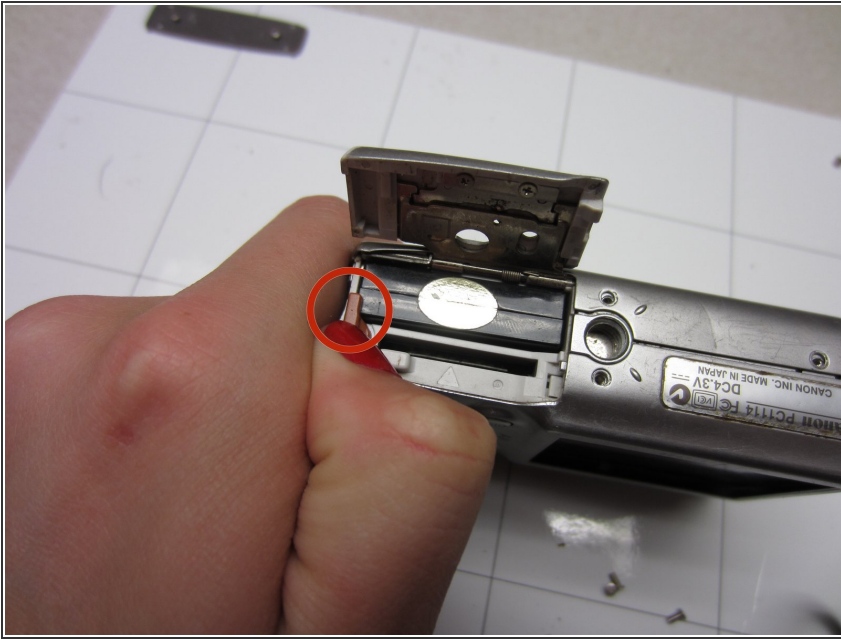
The shutter button is one of the most commonly used buttons on a camera. Therefore, it is also the most likely to break.



TOOLS:

- [Phillips #00 Screwdriver](#) (1)
-

Step 1 — Battery



- Slide open the battery cover.
- Push the small orange tab to the side so the battery can be removed.

Step 2



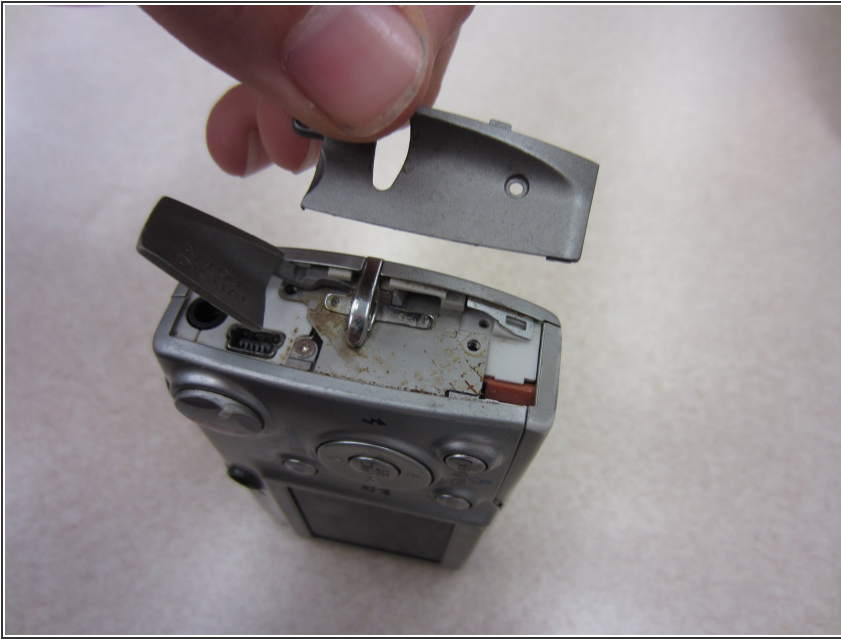
- Slide the battery out of the battery compartment.

Step 3 — Front and Rear Casing



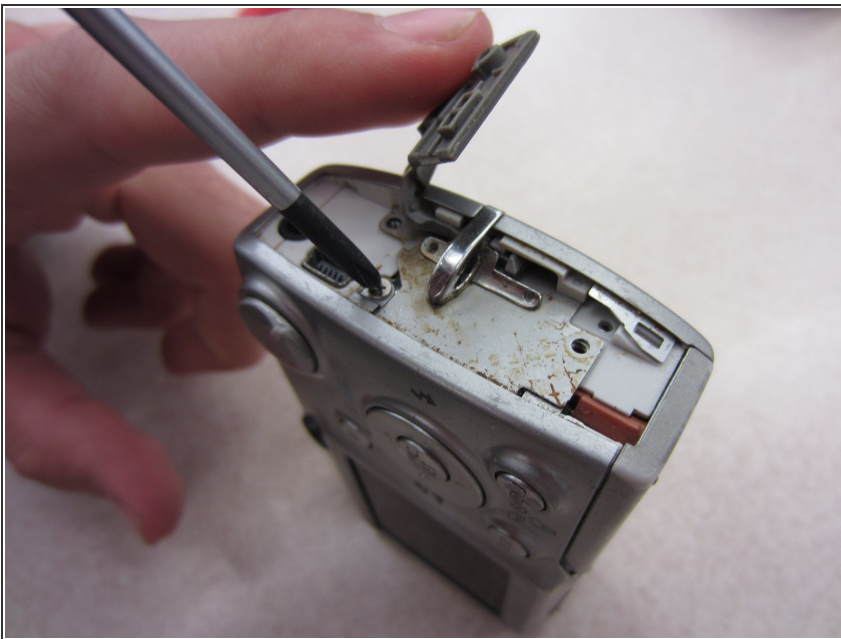
- Two Phillips screws need to be removed using a #00 Phillips screwdriver. The upper screw is under the USB port cover, which can simply be pulled away gently from the casing. the lower screw is visible on the panel.
 - The screws are different sizes. The .125 inch screw is located under the USB port cover. The 0.85 inch screw goes in the lower hole on the panel.
- i** When looking at the back of the camera, these two screws are on the right panel of the camera.

Step 4



- Remove the right side cover from the camera casing.

Step 5



- Remove a .07 inch Phillips screw using a #00 Phillips screwdriver.

Step 6



- Remove two .085 inch Phillips screws from the left side of the camera using a #00 Philips screwdriver.

Step 7



- Remove the left side cover from the camera.

Step 8



- Remove three .15 inch Phillips screws from the bottom of the camera using a #00 Phillips screwdriver.

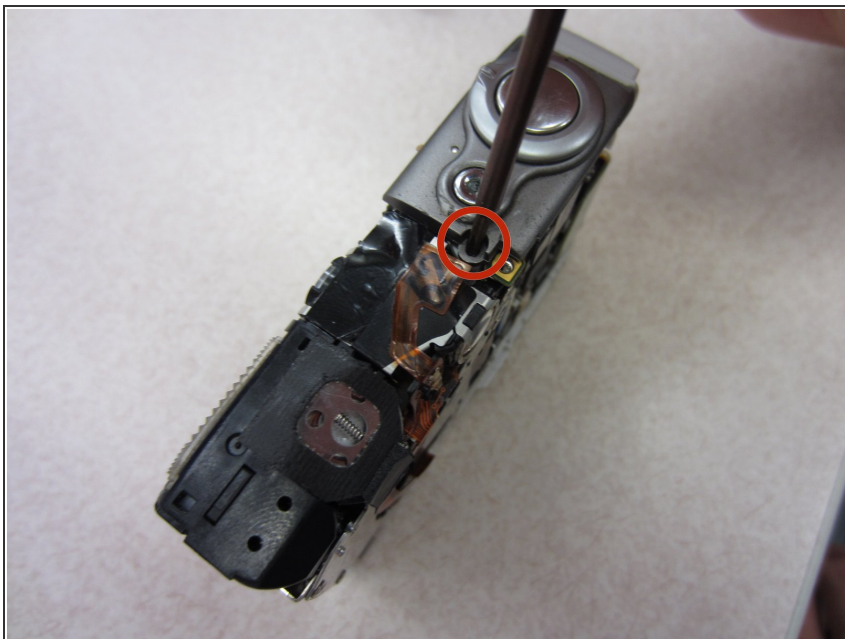
Step 9



- Once the casing is unscrewed, hold the camera with one side facing down, and lift the opposite face of the casing to open it.
 - Remove the internal camera components and layout out all pieces on a clean surface.
- i** The front and back cover may require gentle rocking to remove.

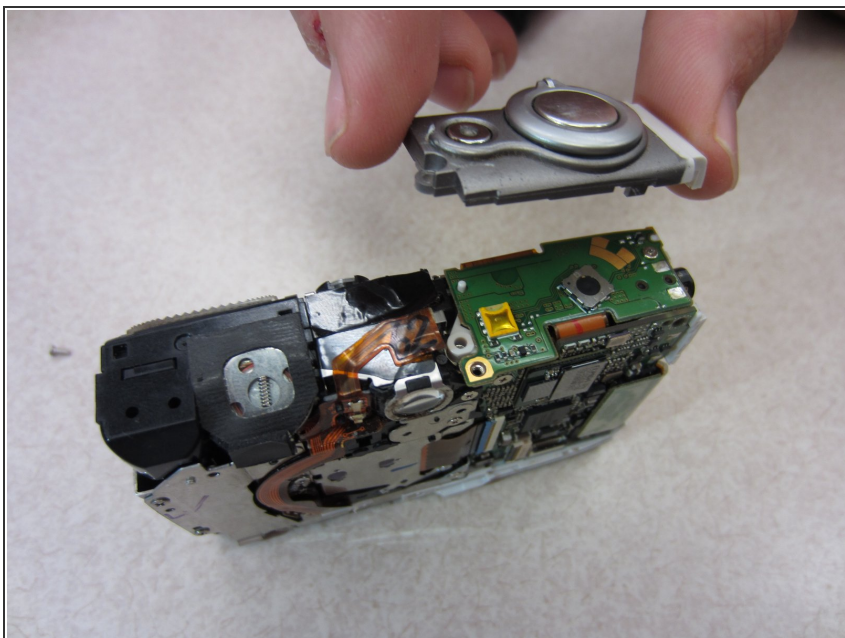
This document was generated on 2019-09-23 08:48:18 AM (MST).

Step 10 — Shutter Button



- Unscrew one .235 inch long Phillips screw using a #00 Phillips screwdriver from the top of the camera.

Step 11



- Gently remove the shutter button unit from the rest of the camera.

To reassemble your device, follow these instructions in reverse order.