



# Canon PowerShot SD500 Digital ELPH Wrist Strap Mount Replacement

This guide will provide instructions on how to replace the wrist strap mount on the Powershot SD500 Digital ELPH camera.

Written By: Kimberly Saeger



---

## INTRODUCTION

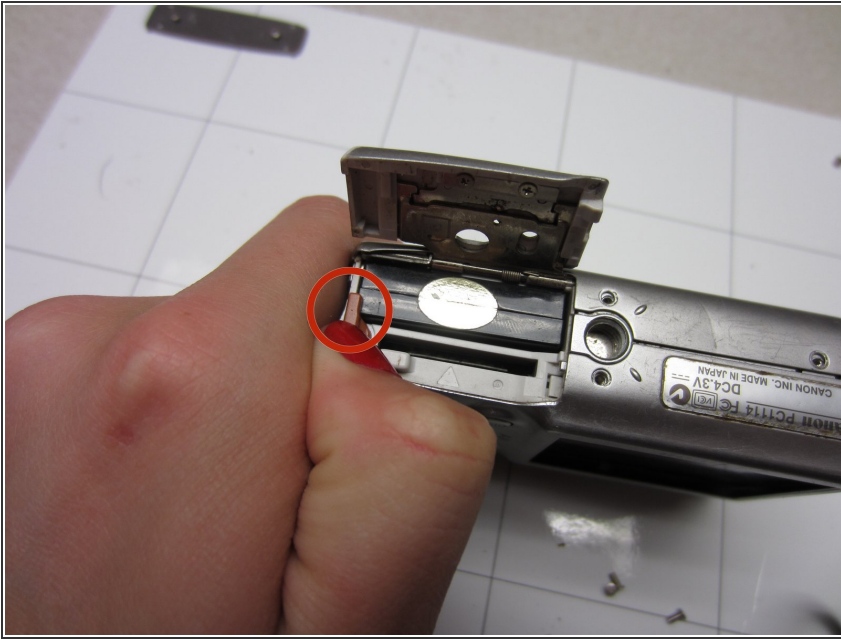
The wrist strap mount is the piece that the wrist strap wraps around. The wrist strap allows the user to conveniently carry around the Powershot SD500 Digital ELPH. If broken, the camera will no longer have a wrist strap.



### TOOLS:

- [Phillips #00 Screwdriver](#) (1)
-

## Step 1 — Battery



- Slide open the battery cover.
- Push the small orange tab to the side so the battery can be removed.

## Step 2



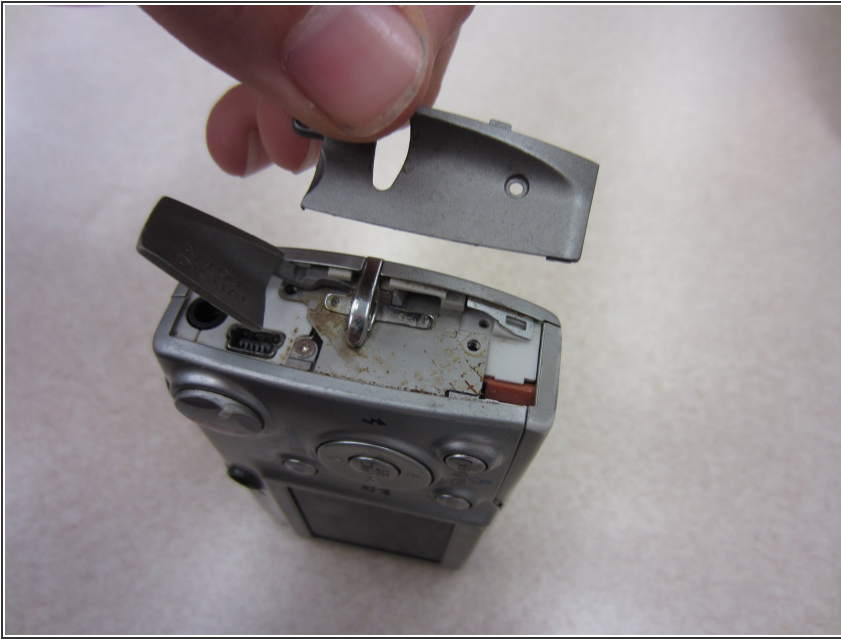
- Slide the battery out of the battery compartment.

### Step 3 — Front and Rear Casing



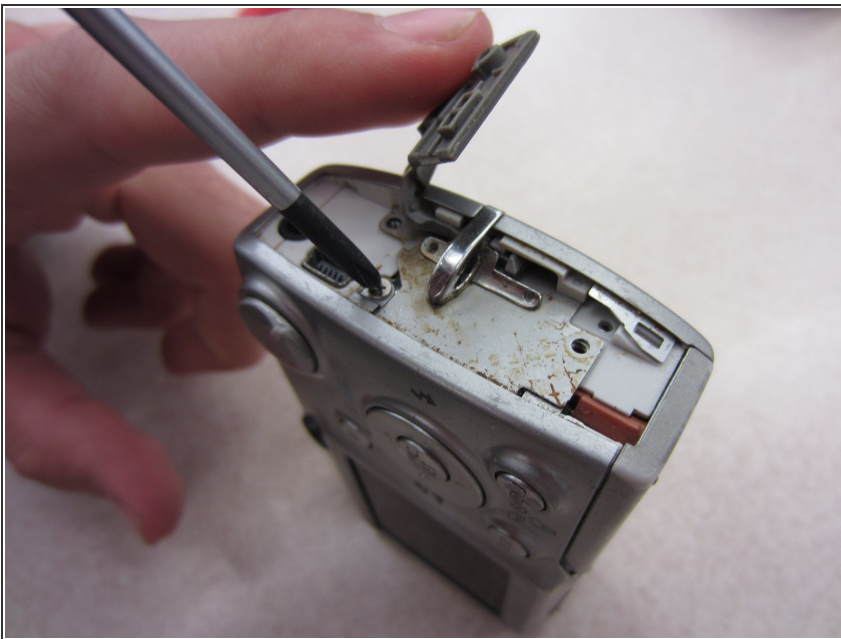
- Two Phillips screws need to be removed using a #00 Phillips screwdriver. The upper screw is under the USB port cover, which can simply be pulled away gently from the casing. the lower screw is visible on the panel.
  - The screws are different sizes. The .125 inch screw is located under the USB port cover. The 0.85 inch screw goes in the lower hole on the panel.
- i** When looking at the back of the camera, these two screws are on the right panel of the camera.

## Step 4



- Remove the right side cover from the camera casing.

## Step 5



- Remove a .07 inch Phillips screw using a #00 Phillips screwdriver.

## Step 6



- Remove two .085 inch Phillips screws from the left side of the camera using a #00 Philips screwdriver.

## Step 7



- Remove the left side cover from the camera.

## Step 8



- Remove three .15 inch Phillips screws from the bottom of the camera using a #00 Phillips screwdriver.

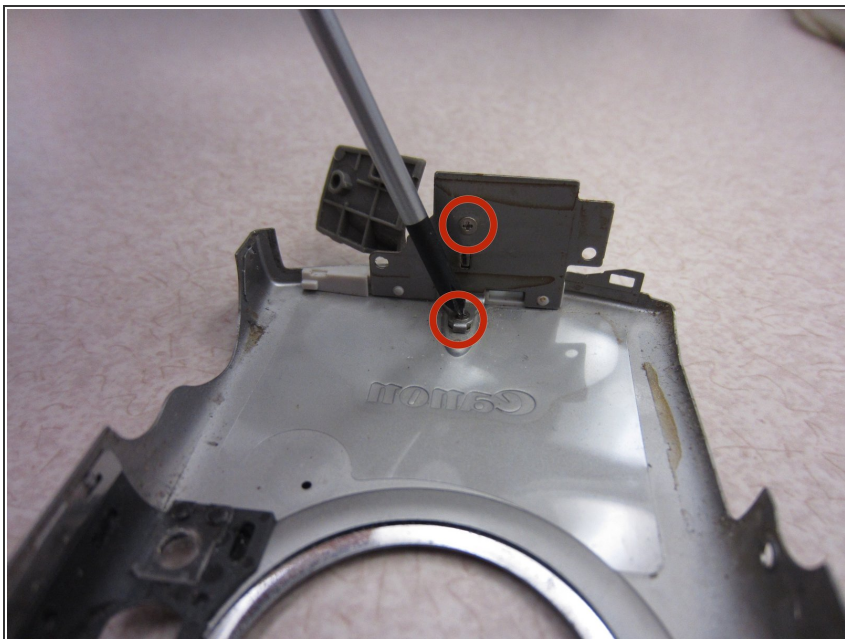
## Step 9



- Once the casing is unscrewed, hold the camera with one side facing down, and lift the opposite face of the casing to open it.
  - Remove the internal camera components and layout out all pieces on a clean surface.
- i** The front and back cover may require gentle rocking to remove.

This document was generated on 2019-09-23 08:09:25 AM (MST).

## Step 10 — Wrist Strap Mount



- Unscrew two Phillips screws using a #00 Phillips screwdriver from front cover of the camera.

## Step 11 — Remove Mount



- Remove plastic cover from front side of camera.
- Remove and pull away wrist strap mount from the front side of the camera.

To reassemble your device, follow these instructions in reverse order.