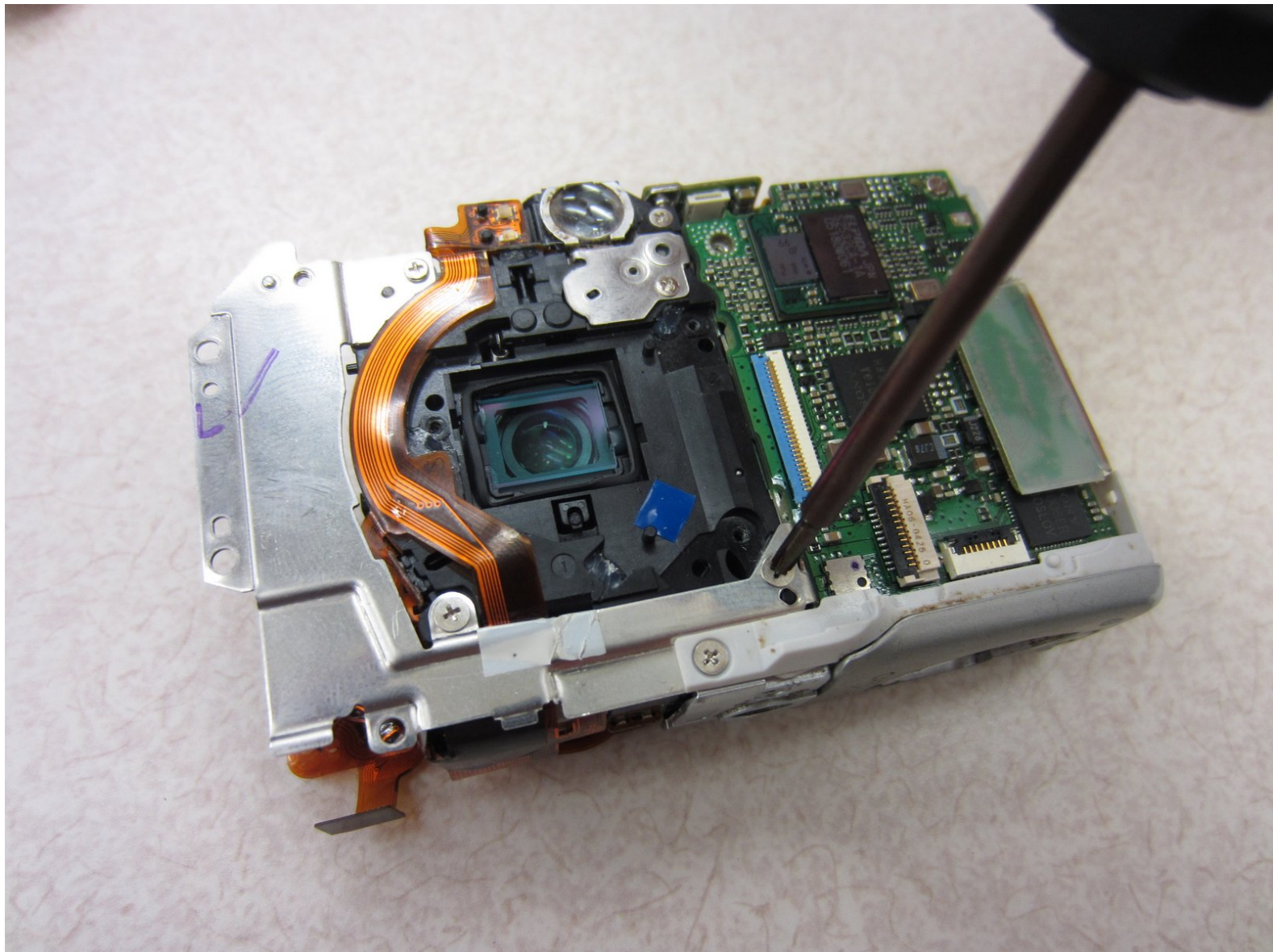




Canon PowerShot SD500 Digital ELPH Zoom Lens Assembly Replacement

This repair guide will show you how to take apart the PowerShot SD550 and replace the zoom lens.

Written By: Taylor Shields



This document was generated on 2019-09-23 08:47:36 AM (MST).

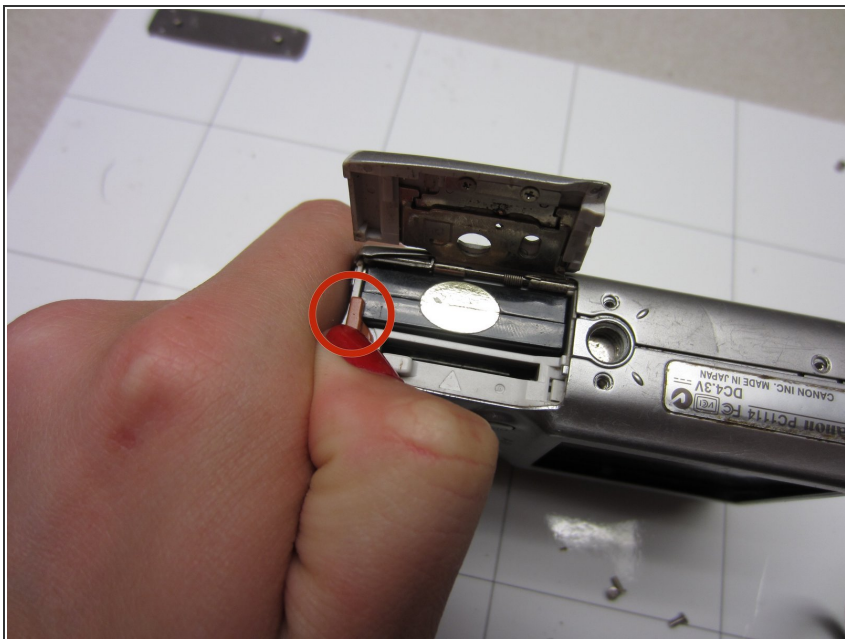
INTRODUCTION

The lens is the device that focuses the image seen by a camera. Because it is the only moving part, it can easily malfunction, causing blurry pictures or even a camera error.

TOOLS:

- [Phillips #00 Screwdriver](#) (1)
-

Step 1 — Battery



- Slide open the battery cover.
- Push the small orange tab to the side so the battery can be removed.

Step 2



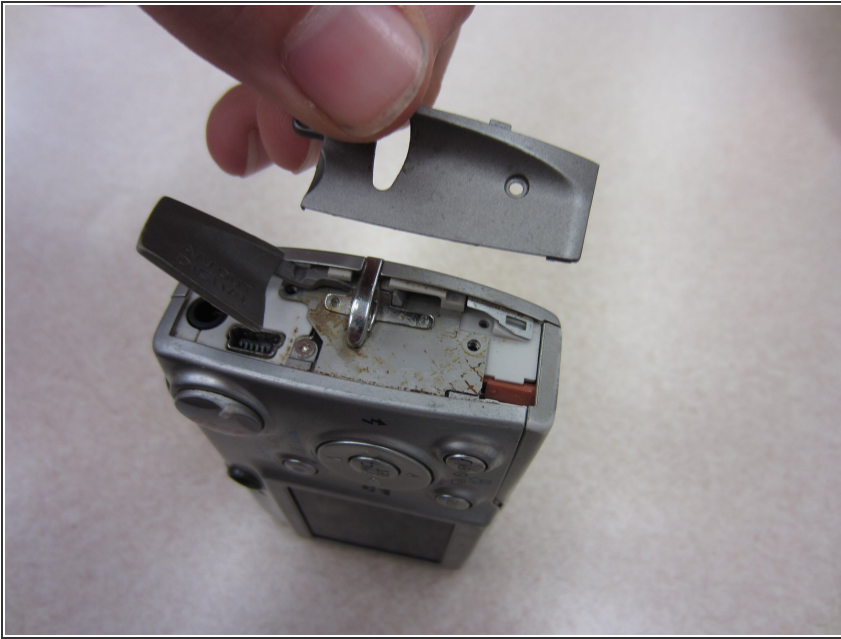
- Slide the battery out of the battery compartment.

Step 3 — Front and Rear Casing



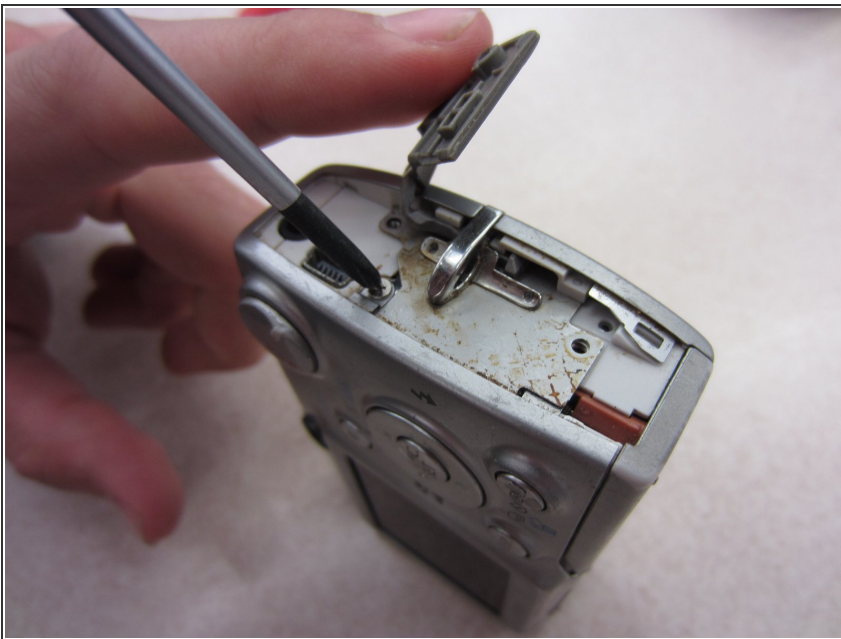
- Two Phillips screws need to be removed using a #00 Phillips screwdriver. The upper screw is under the USB port cover, which can simply be pulled away gently from the casing. the lower screw is visible on the panel.
 - The screws are different sizes. The .125 inch screw is located under the USB port cover. The 0.85 inch screw goes in the lower hole on the panel.
- i** When looking at the back of the camera, these two screws are on the right panel of the camera.

Step 4



- Remove the right side cover from the camera casing.

Step 5



- Remove a .07 inch Phillips screw using a #00 Phillips screwdriver.

Step 6



- Remove two .085 inch Phillips screws from the left side of the camera using a #00 Philips screwdriver.

Step 7



- Remove the left side cover from the camera.

Step 8



- Remove three .15 inch Phillips screws from the bottom of the camera using a #00 Phillips screwdriver.

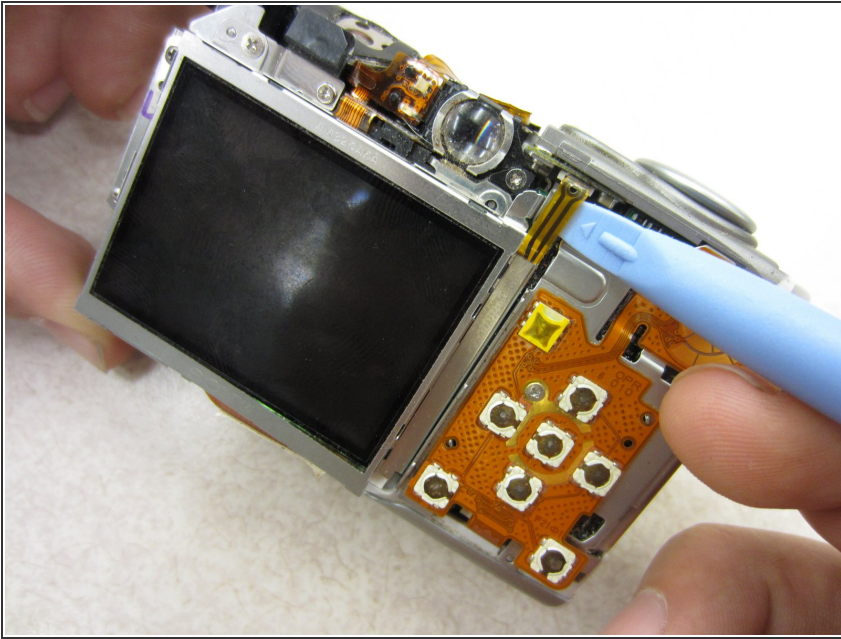
Step 9



- Once the casing is unscrewed, hold the camera with one side facing down, and lift the opposite face of the casing to open it.
- Remove the internal camera components and layout out all pieces on a clean surface.
- ⓘ The front and back cover may require gentle rocking to remove.

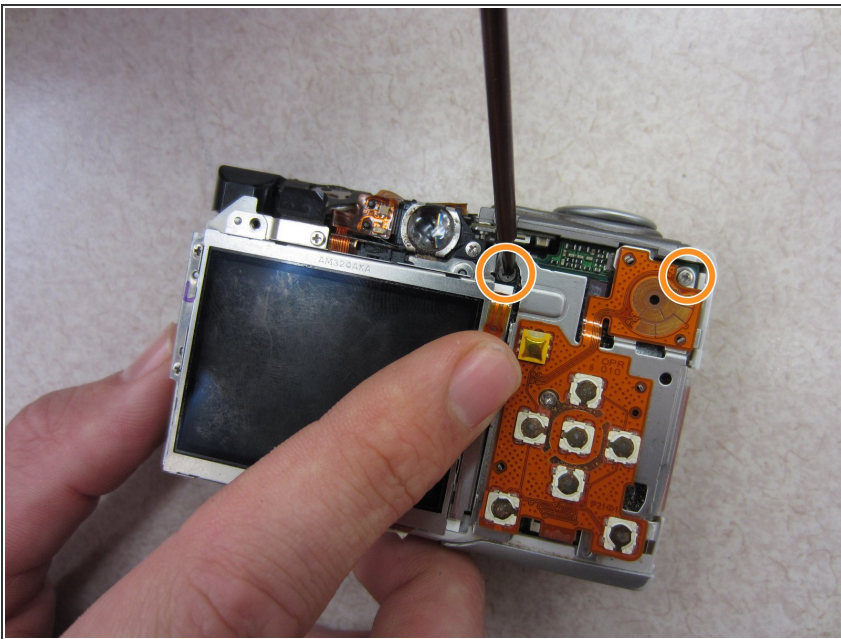
This document was generated on 2019-09-23 08:47:36 AM (MST).

Step 10 — Button Contact Panel



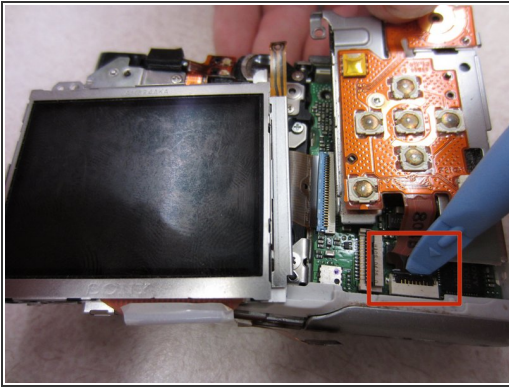
- Carefully wedge the pry tool under the ribbon in the ribbon gate.
 - Gently remove the ribbon from the ribbon gate by pulling it away from the gate with the pry tool.
- ⚠ Be careful not to damage the ribbon.

Step 11



- Gently press the ribbon back to get access to a Phillips screw behind it.
- ⚠ Be careful not to damage the ribbon.
- Unscrew two .125 inch long Phillips screws using a #00 Philips screwdriver.

Step 12



- Remove the ribbon with a pry tool by gently pulling it out of the ribbon gate tab.

⚠ Be careful not to damage the ribbon.

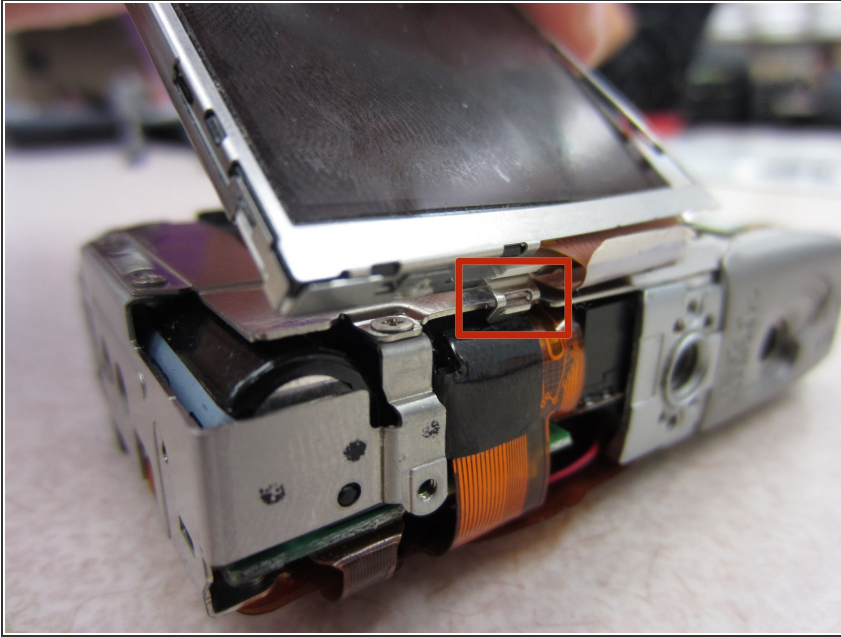
- Pull the button board away from the rest of the camera.

Step 13 — LCD



- Unscrew one .113 inch Phillips screw using a #00 Phillips screwdriver.

Step 14



- Lift the LCD screen up and away from the tab that holds it in place on the face of the camera.
- ⚠ Be careful, the LCD screen is still connect to the camera by a ribbon cable.

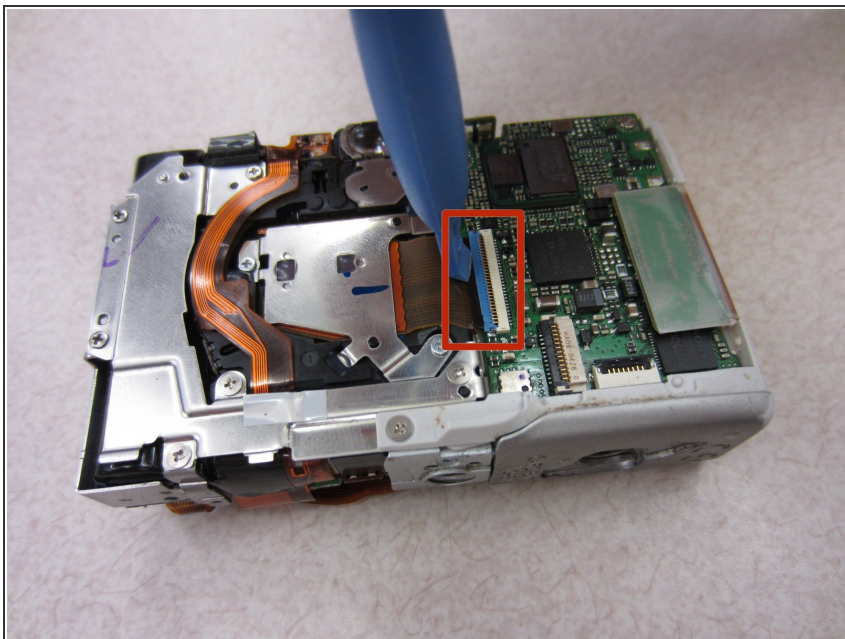
Step 15



- Gently press the pry tool under the ribbon gate and lift up to free the ribbon connecting the LCD to the circuit board.
- ⚠ Be careful not to damage the ribbon.
- The LCD can now be completely removed from the camera.

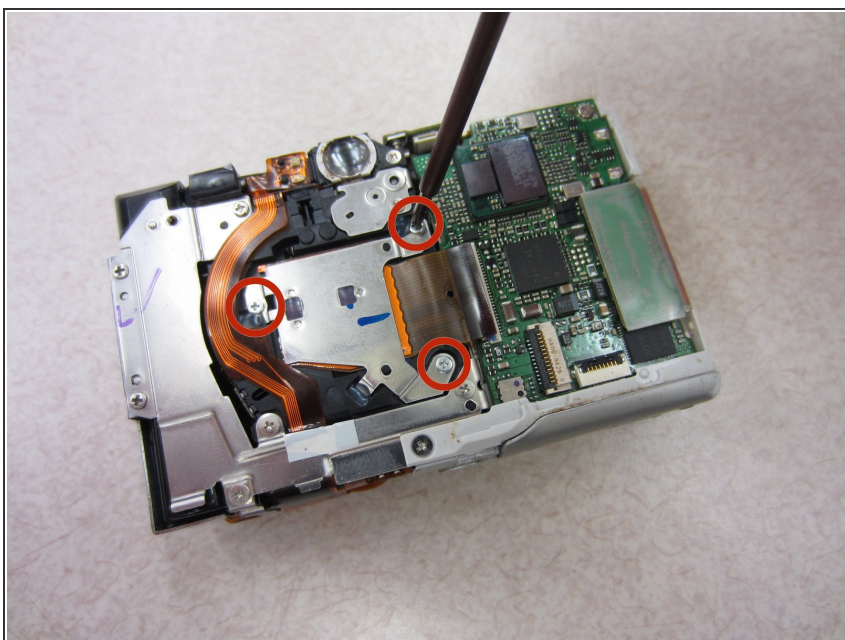
This document was generated on 2019-09-23 08:47:36 AM (MST).

Step 16 — Image Sensor



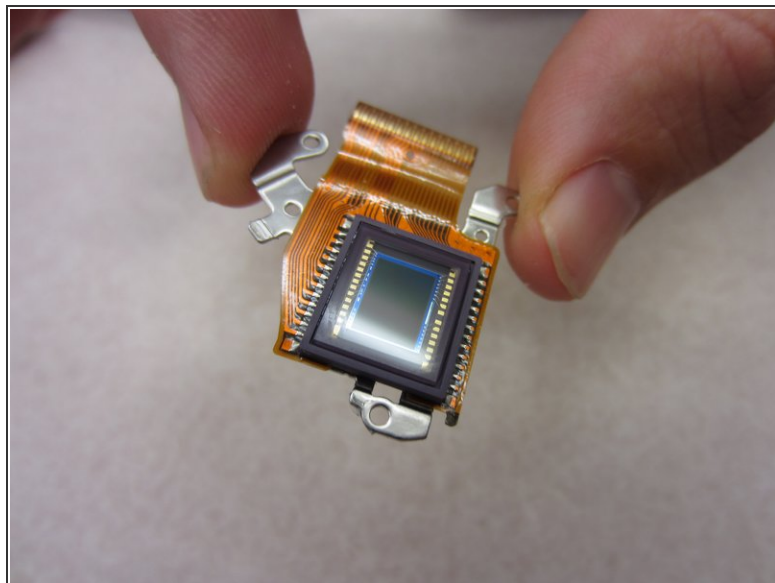
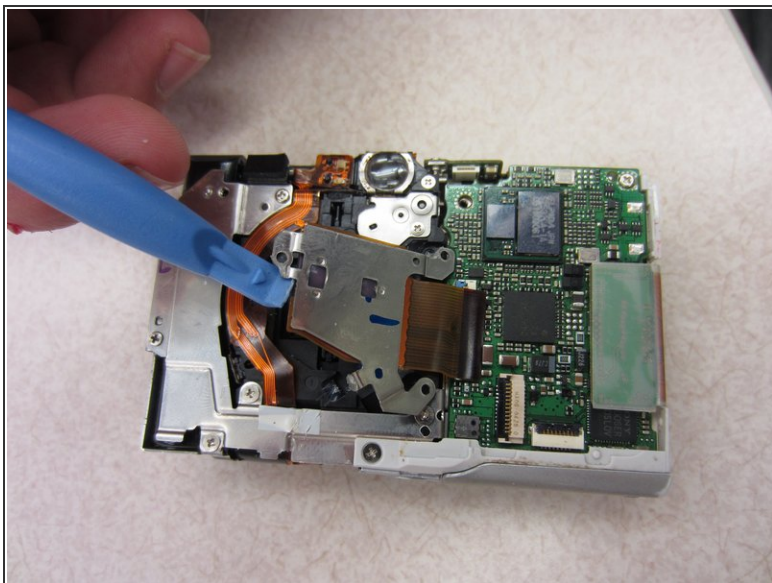
- Place the pry tool under ribbon gate and gently lift it up, disconnecting the ribbon.

Step 17



- Unscrew three .15 inch Phillips screws from the back of the camera using a #00 Phillips screwdriver.

Step 18



- Use the pry tool to gently lift the image sensor away from the rest of the camera.

⚠ Be careful not to damage the image sensor as you pry it up.

Step 19 — Flash Bulb Assembly



- Arrange camera so it is facing up towards you.
- Unscrew one .01 inch Phillips screw using a #00 Phillips screwdriver from the front of the camera.

Step 20



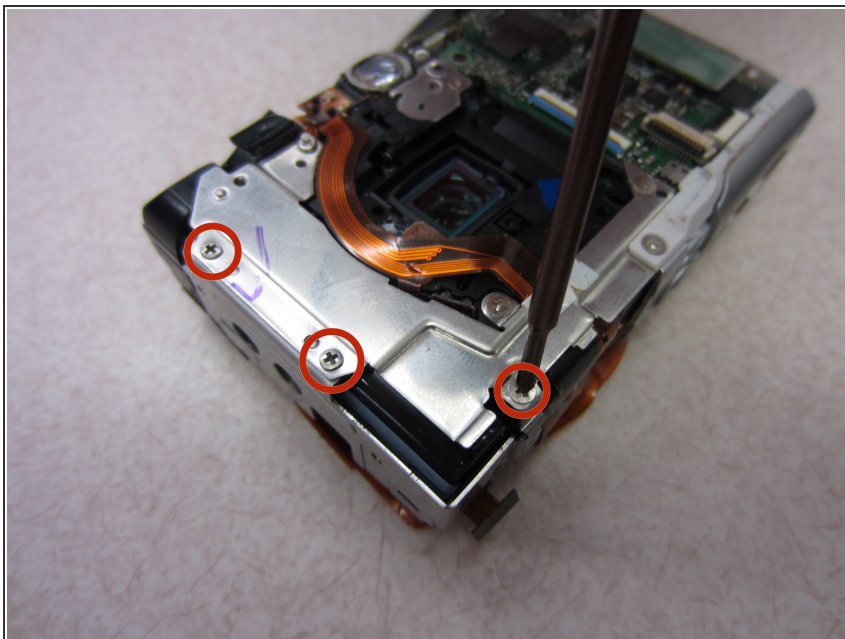
- Gently remove the indicated ribbon from respective ribbon gates.
- ⚠ Be careful not to damage the ribbon.

Step 21



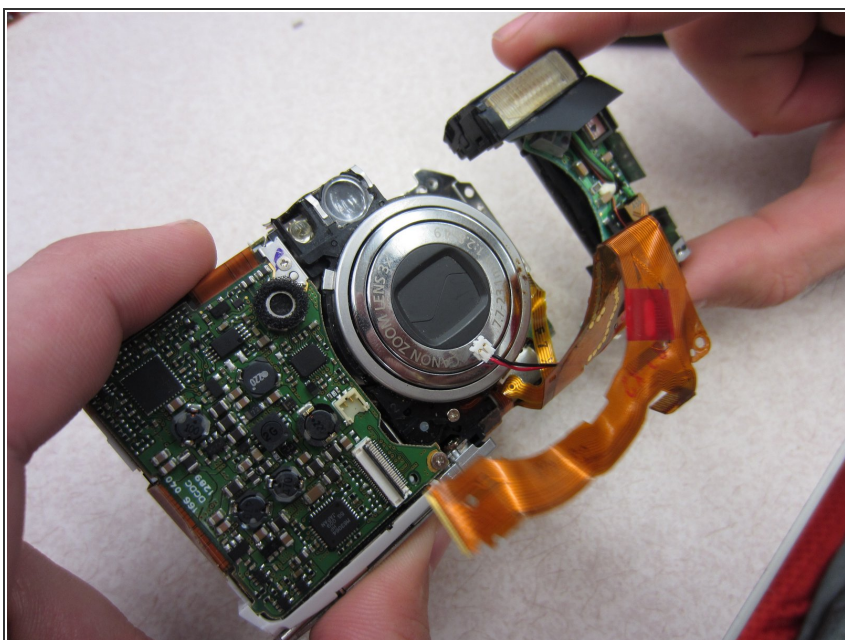
- Place spudger under white connector and gently lift it vertically out of its slot.
- ⚠ Be careful not to damage wire connector during removal.

Step 22



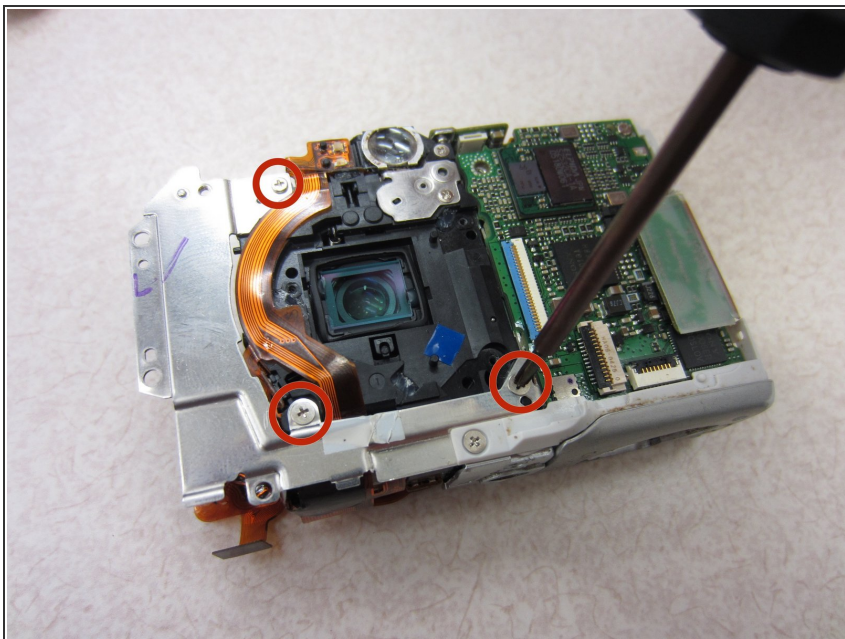
- Unscrew three .065 inch Phillips screws using a #00 Phillips screwdriver from the back of the camera.

Step 23



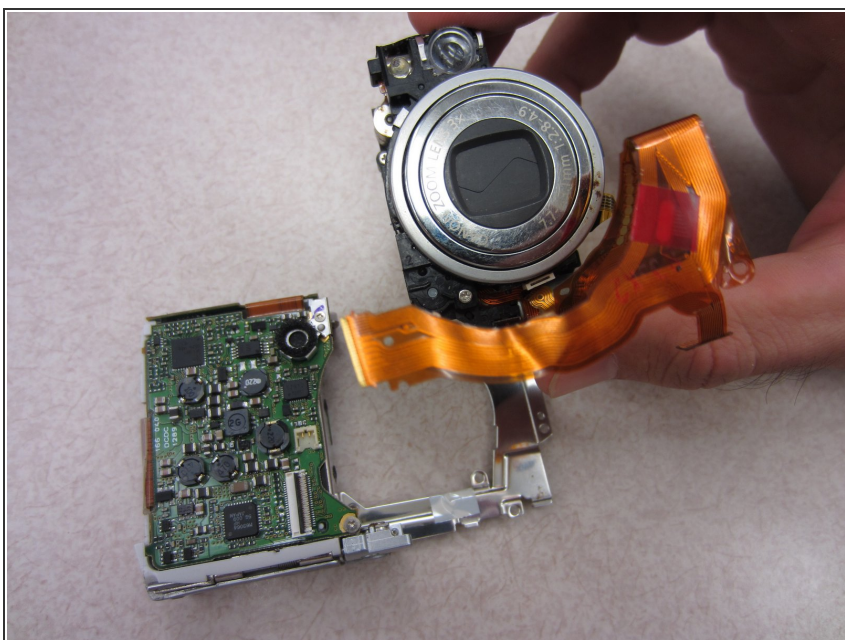
- Gently pull away flash bulb assembly from the rest of the camera.
- ⚠ Be careful not to damage the ribbon on the rest of the camera.

Step 24 — Zoom Lens Assembly



- Unscrew three .12 inch long Phillips screws using a #00 Phillips screwdriver from the back of the camera.

Step 25



- Gently remove zoom lens from the rest of the camera.
- ⚠ Be careful not to damage ribbon during removal.

To reassemble your device, follow these instructions in reverse order.