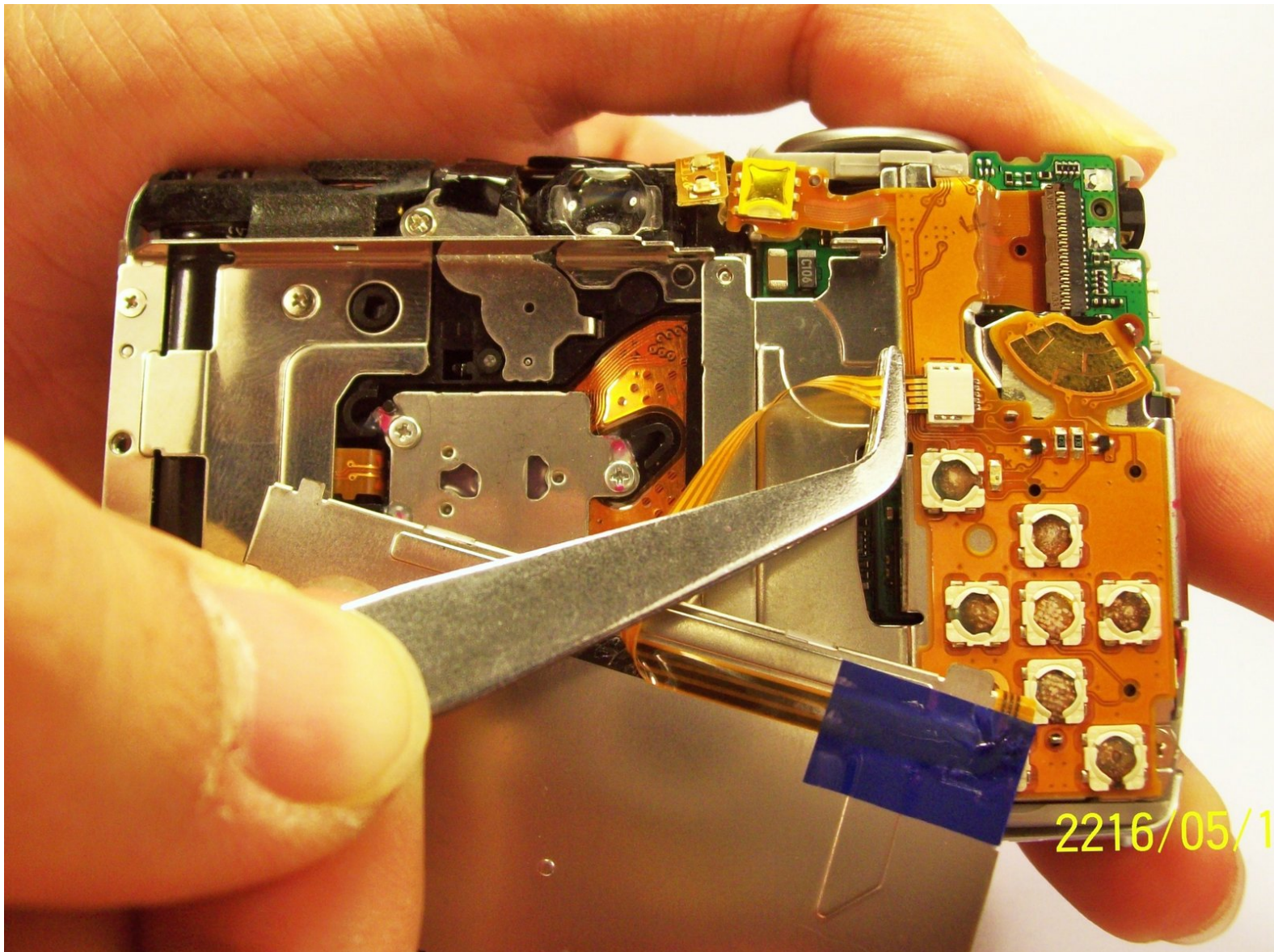




Canon PowerShot SD700 Backlight Replacement

Removing backlight

Written By: Emilio Rossi



INTRODUCTION

Follow these instructions to remove and install a new backlight.



TOOLS:

- [Phillips #00 Screwdriver](#) (1)
 - [Tweezers](#) (1)
 - [iFixit Opening Tools](#) (1)
-

Step 1 — Outside Case



- Turn off camera by pressing power button above the LCD screen.
- Remove the battery and memory card.

Step 2



- Remove the screws on the bottom of the camera using a 00 Philip's head screw driver

Step 3



- Remove the screws on the right side of the camera.

Step 4



- Remove the screws on the left of the camera underneath the "A/V out Digital" cover flap.

Step 5



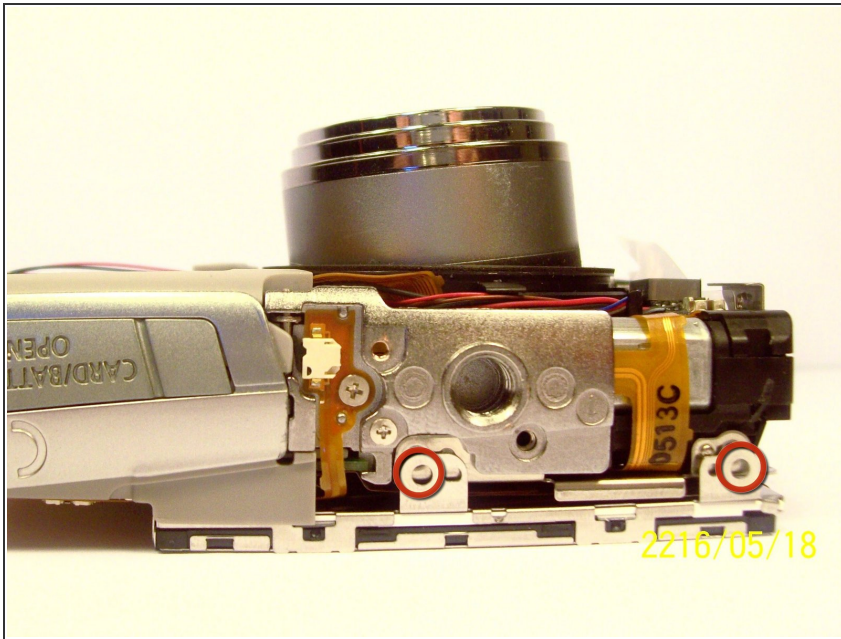
- Remove the screws on the bottom of the camera near the battery and the memory card slots.
- This screw is longer than the rest of the screws.

Step 6



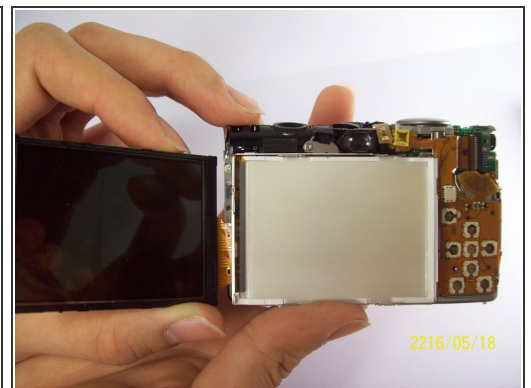
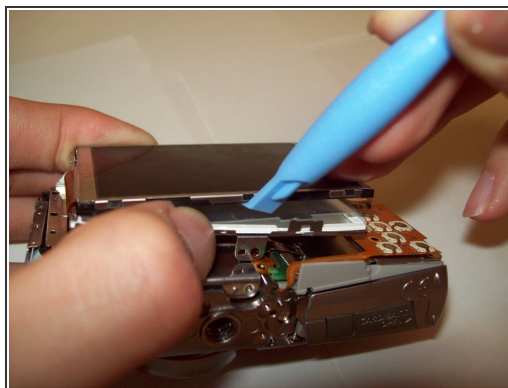
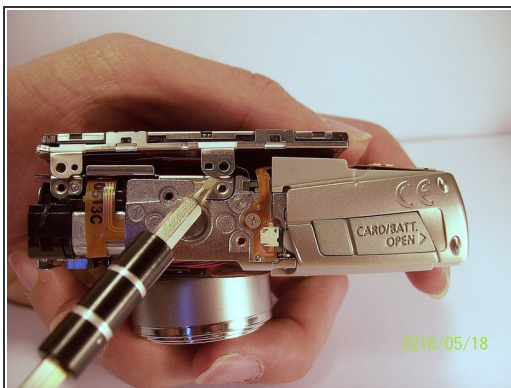
- Remove the front back and side casings from the camera.

Step 7 — LCD screen



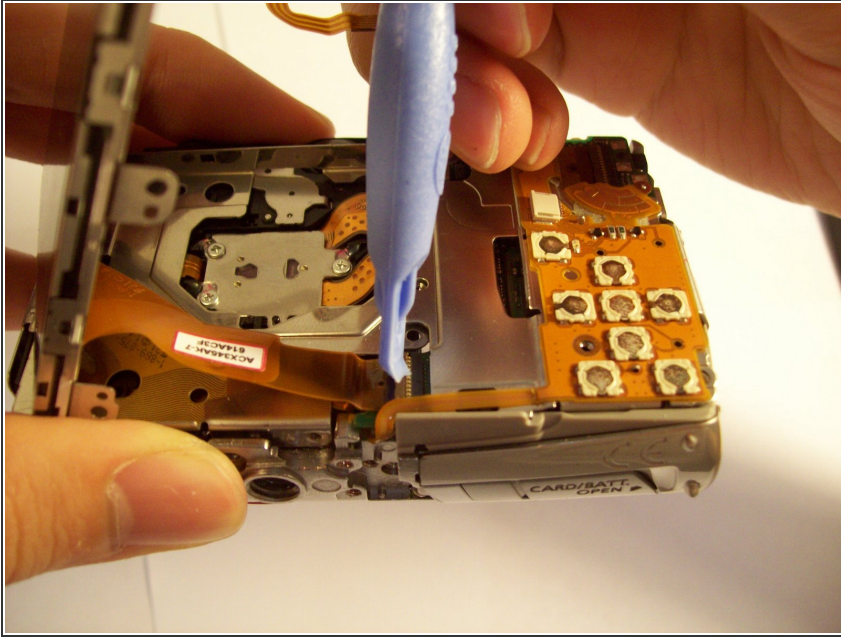
- Remove the two screws that connect the LCD and backlight to the main body of the camera.

Step 8



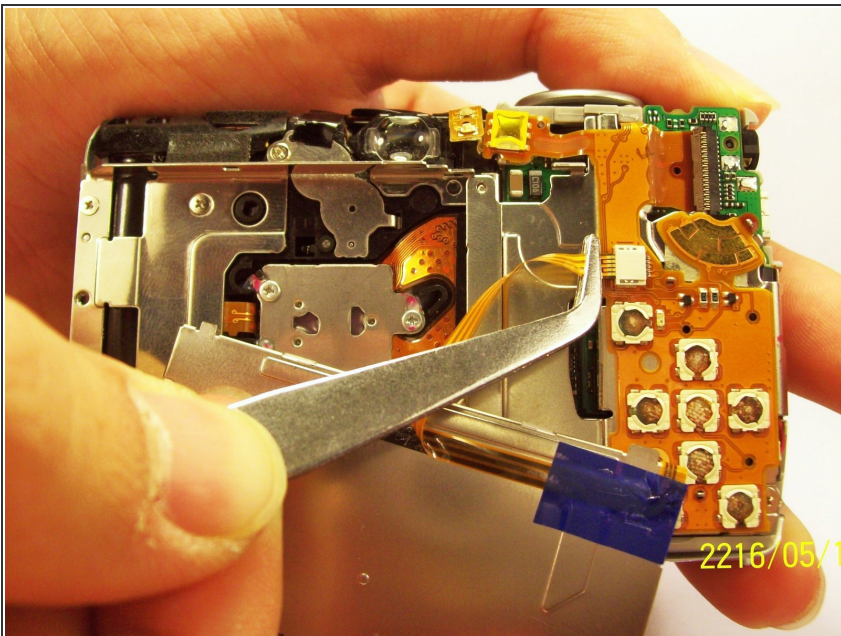
- Gently pry the LCD and the backlight from the main body of the camera.
- Gently pry the LCD from the backlight.
 - The thin ribbon cable is for the backlight.
 - The thick ribbon cable is for the LCD screen.

Step 9



- Carefully lift the ZIF connector that covers the thick ribbon cable.
- This ZIF connector is fragile. Use caution when lifting it from its down position.
- Insert the new LCD and reassemble the camera.

Step 10 — Backlight



- Unplug the ribbon from the housing on the circuitry.
- Take the new ribbon and insert it into the housing.
- Tweezers or a tool with a sharp point can be used.

To reassemble your device, follow these instructions in reverse order.