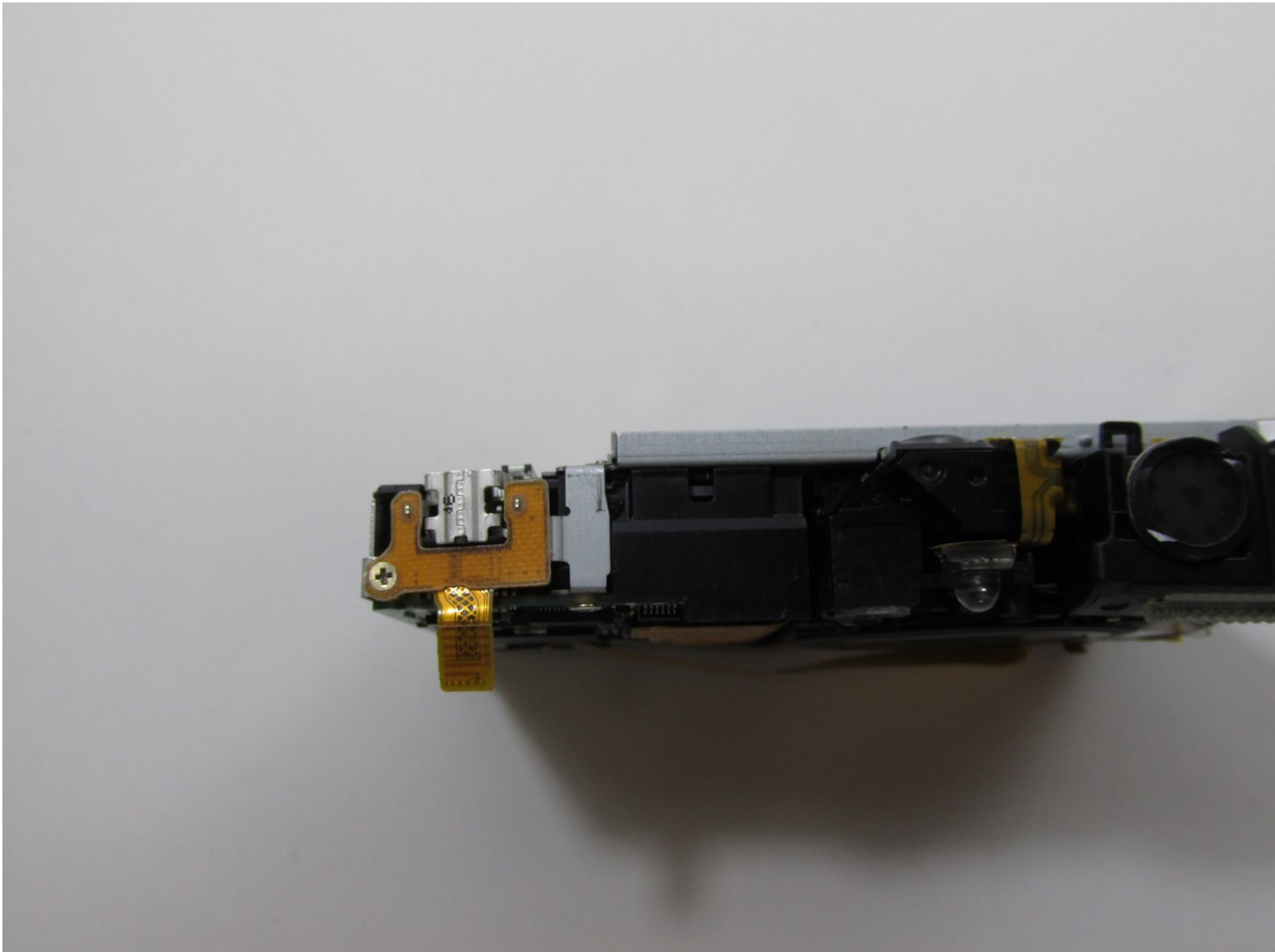




# Canon PowerShot SD780 IS USB Port Replacement

Replaces the interface cable port in the Canon PowerShot SD780 IS.

Written By: Arlene Ale



---

## INTRODUCTION

This replacement guide will show you how to access and replace the interface cable port used for exporting photos from the Canon PowerShot SD780 IS.

---

### TOOLS:

- [Phillips #00 Screwdriver](#) (1)
  - [Spudger](#) (1)
-

## Step 1 — USB Port



- Begin by turning off the camera and removing the battery to avoid any shock injuries.

## Step 2



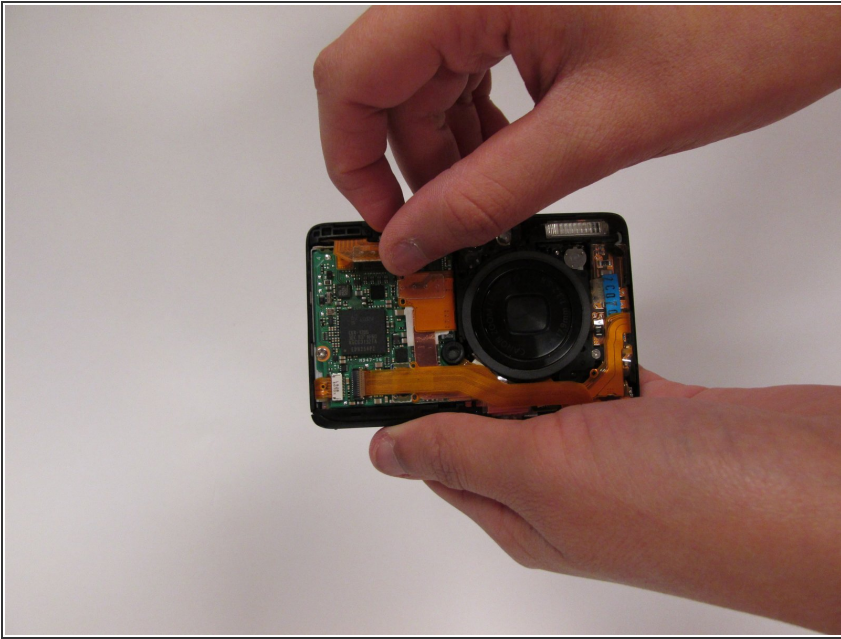
- After the battery is removed, use a screwdriver to remove the **five** outermost screws on the camera to allow for a case replacement. Keep in mind that keeping track of where each screw came from is crucial for when putting the camera back together.

### Step 3



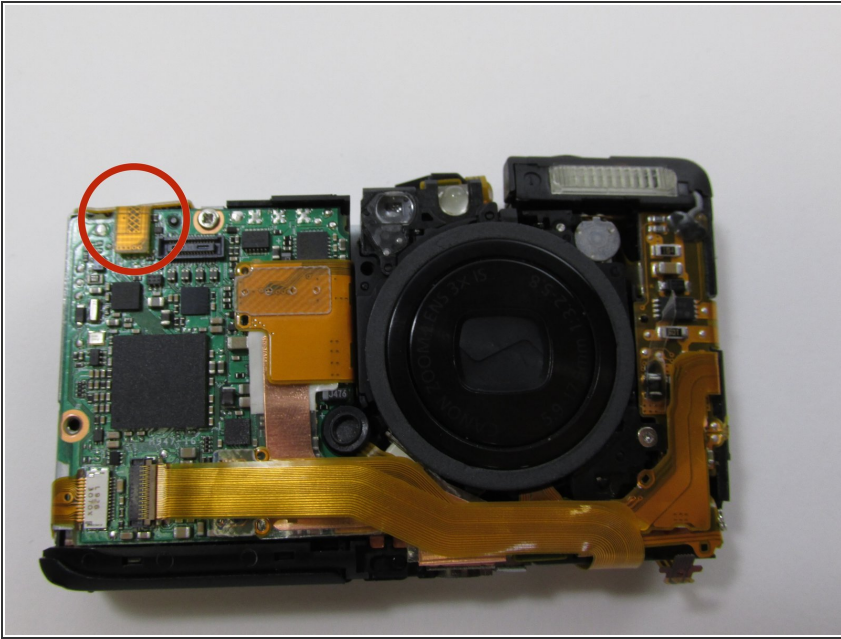
- There are 2 screws located on the left side of the camera. These screw locations are depicted with the red circle markings in the photos. These screws are 2.0 mm long.

## Step 4



- Remove the front panel of the camera case to expose the top left copper strip. Gently pull upward on the strip to disconnect it from the camera.

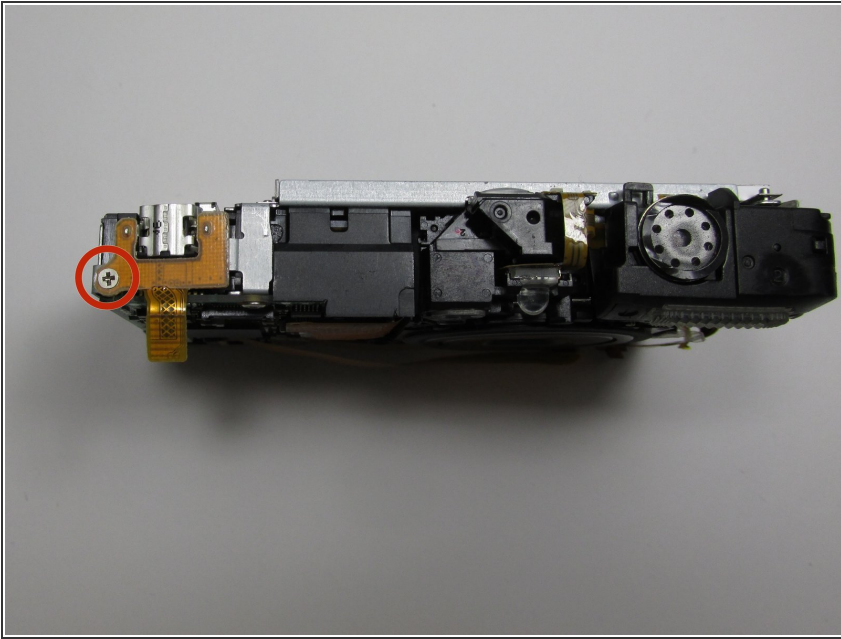
## Step 5



- Once you remove the back portion of the camera, you will see the charging component. Remove the metallic strip on the charging component which attaches it to the motherboard.



## Step 6



- Using a screwdriver, remove the screw that attaches the charging mechanism to the body of the camera. This will allow the mechanism to be released from the camera.

To reassemble your device, follow these instructions in reverse order.