



Canon PowerShot SD850 IS Battery Replacement

Replace the battery in your Canon PowerShot SD850 IS.

Written By: iDeleted

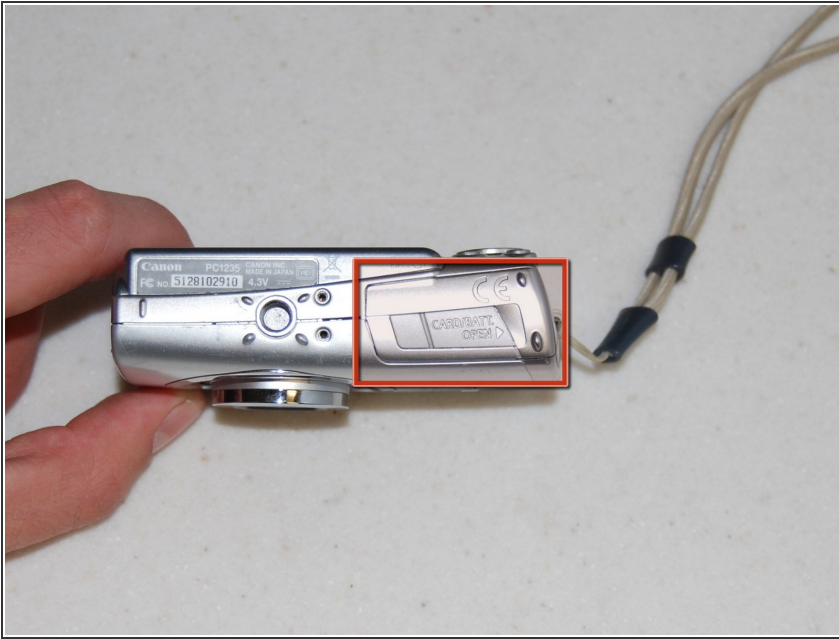


INTRODUCTION

Power up your camera by installing a battery.

You'll need an NB5L Li-ion 3.7v/1120mAh battery.

Step 1 — Battery



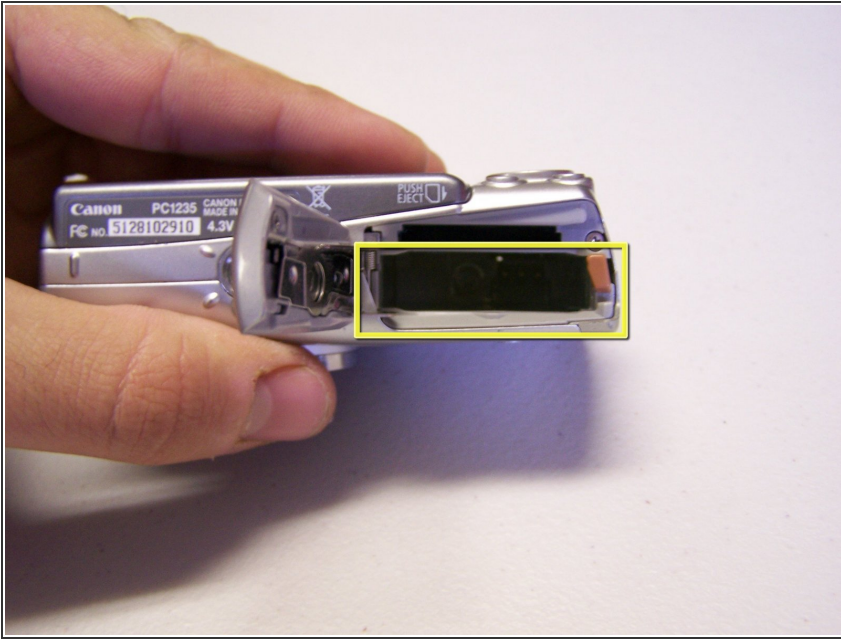
- Identify the battery port on the underside of the camera.

Step 2



- Using your thumb, slide the port to the right and release.

Step 3



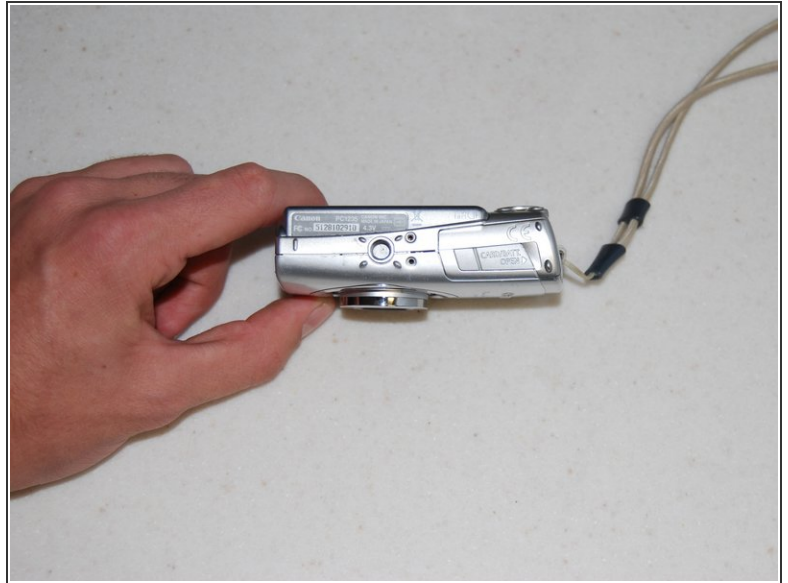
- Remove the battery.

Step 4 — Battery



- Verify that your battery is a [Li-ion Battery 3.7/1120mAh] model: NB5L
- Orient battery with contact points facing away from you.
- Insert battery into battery port.

Step 5



- Secure [CARD/BATT. OPEN>] hatch by pressing flat, then sliding left into locking position.