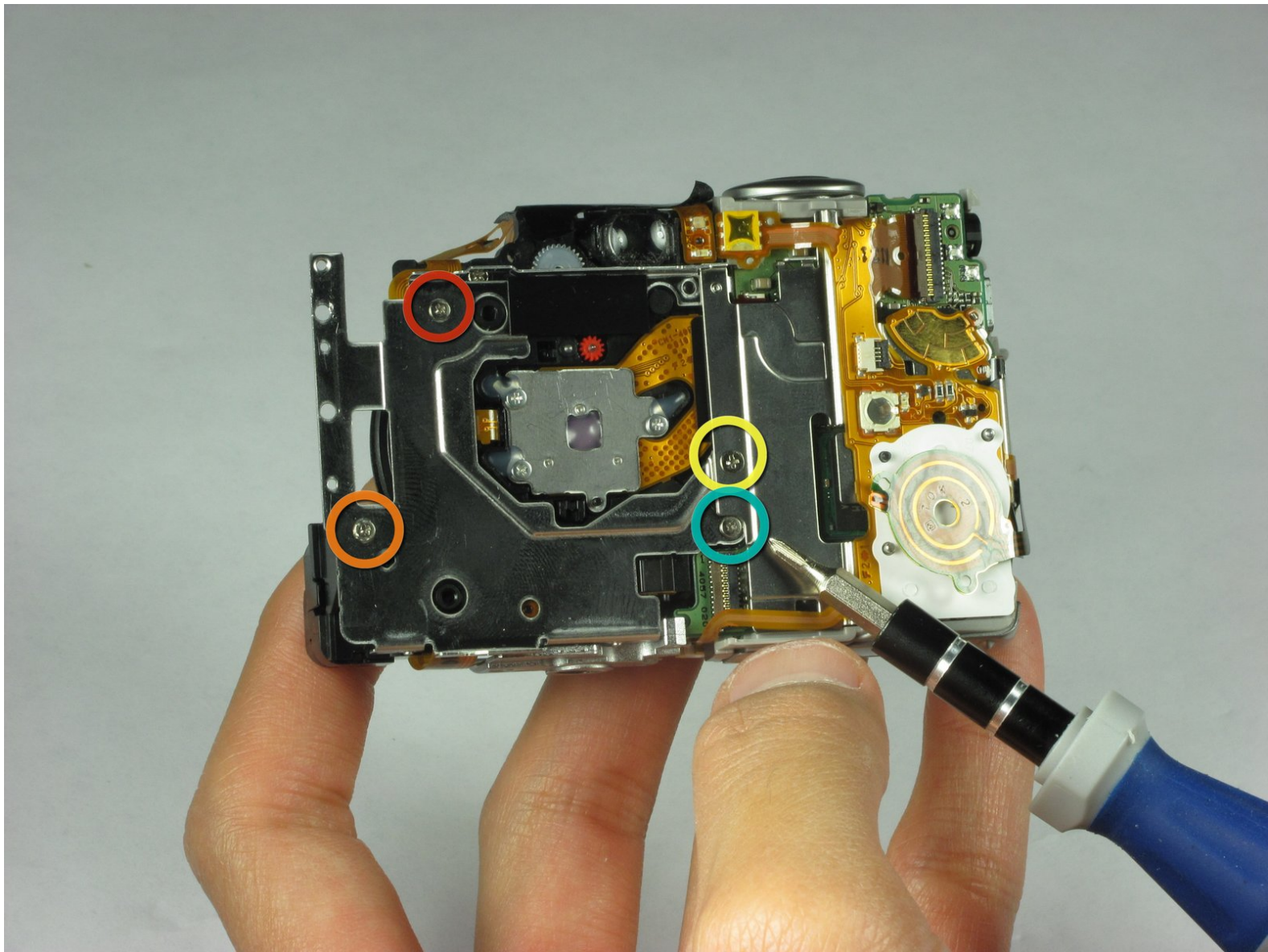




# Canon PowerShot SD850 IS Camera Lens Replacement

Written By: Peter Tran



# INTRODUCTION

Use this guide to remove a broken camera lens from your Canon PowerShot SD850 IS.



## TOOLS:

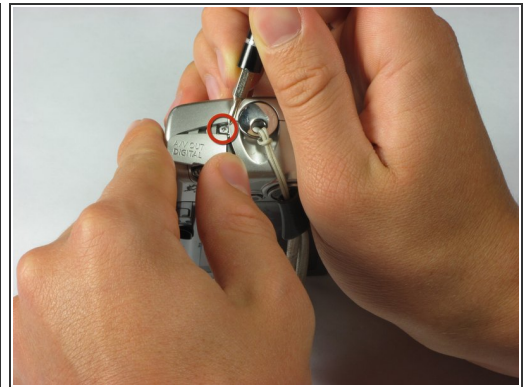
- [Tweezers](#) (1)
  - [Phillips #00 Screwdriver](#) (1)
  - [Flathead 3/32" or 2.5 mm Screwdriver](#) (1)
  - [Spudger](#) (1)
-

## Step 1 — Case



- Remove the following 4 screws:
  - Two 2.8 mm Phillips #00 at the bottom of the camera.
  - Two 2.75 mm Phillips #00 on the opposite side of the wrist strap.

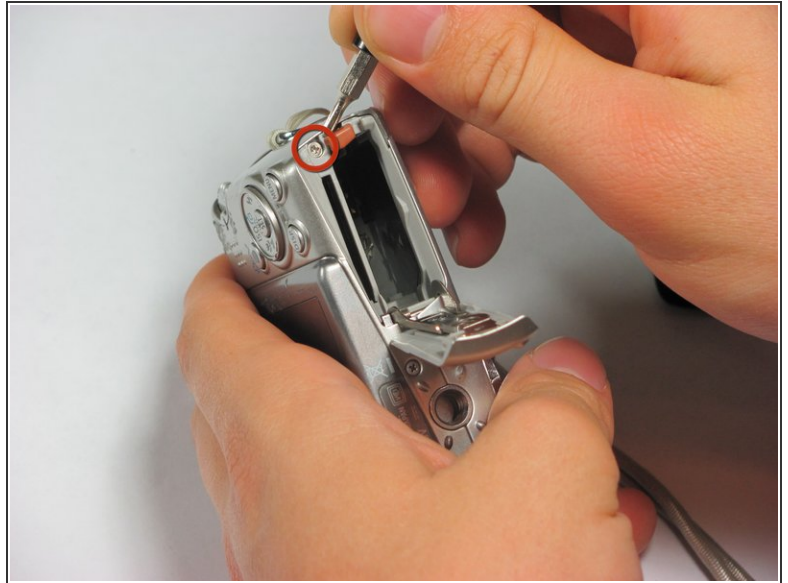
## Step 2



- Open the A/V OUT DIGITAL flap on the side of the wrist strap.
- Remove the 2.75 mm Phillips #00 under the A/V OUT DIGITAL flap on the side of the wrist strap.

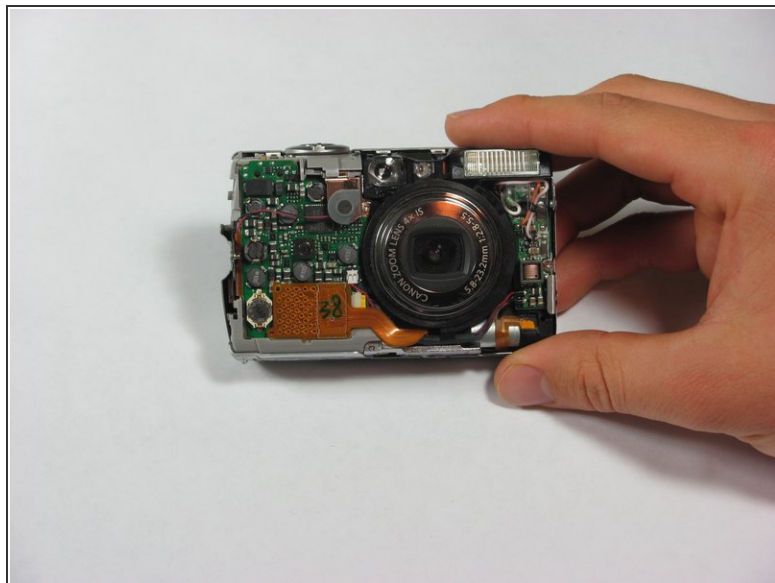


### Step 3



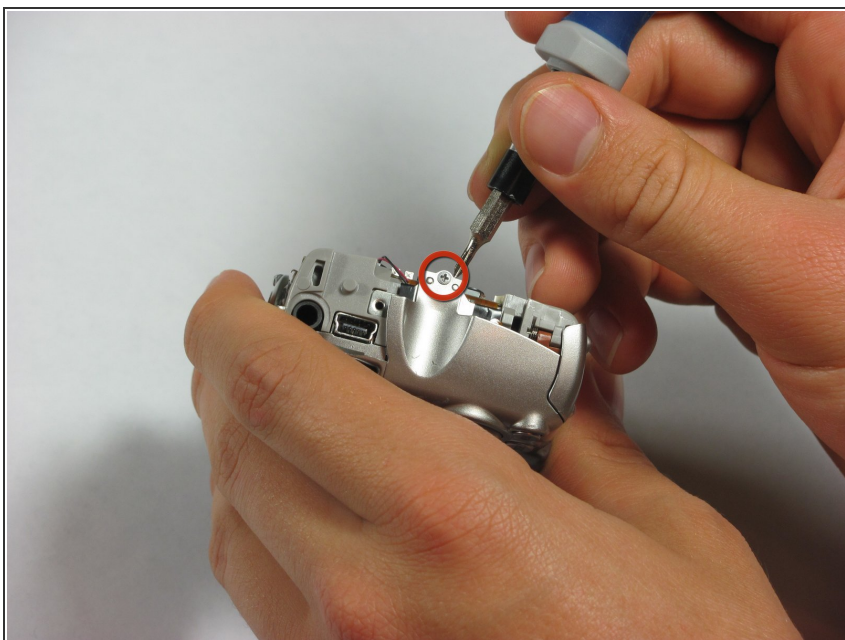
- On the bottom of the camera, use your fingernail to slide the light gray tab towards the edge of the camera.
- Slide light gray door and pull up to open the door.
- Remove the 8.35 mm Phillips #00 next to the brown tab that holds the battery.

## Step 4



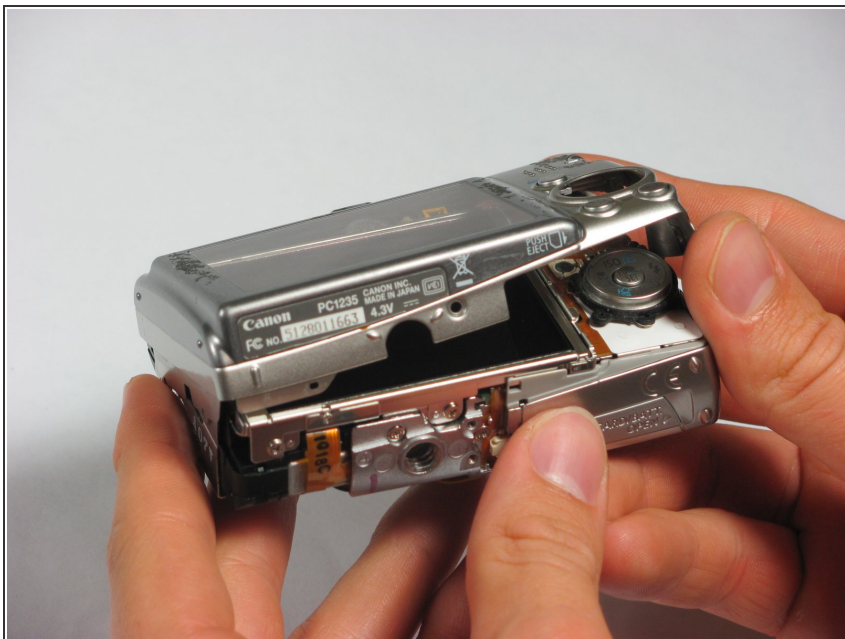
- Gently pull the front cover straight out from the camera. This will expose the wiring on the front of the camera.

## Step 5



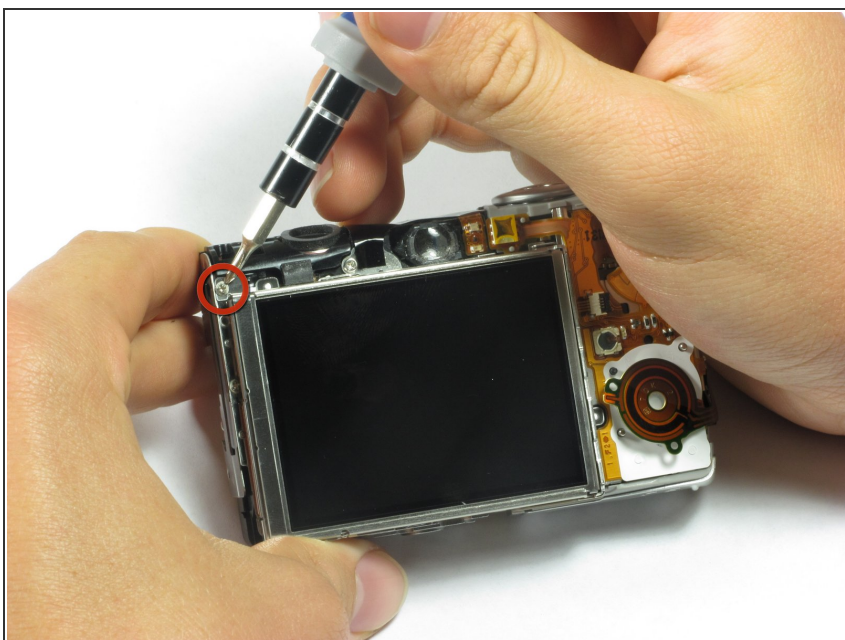
- Remove the 2.75 mm Phillips #00 next to A/V OUT DIGITAL.

## Step 6



- Slide the back casing (with the screen protector) off to reveal the LCD and back wiring.

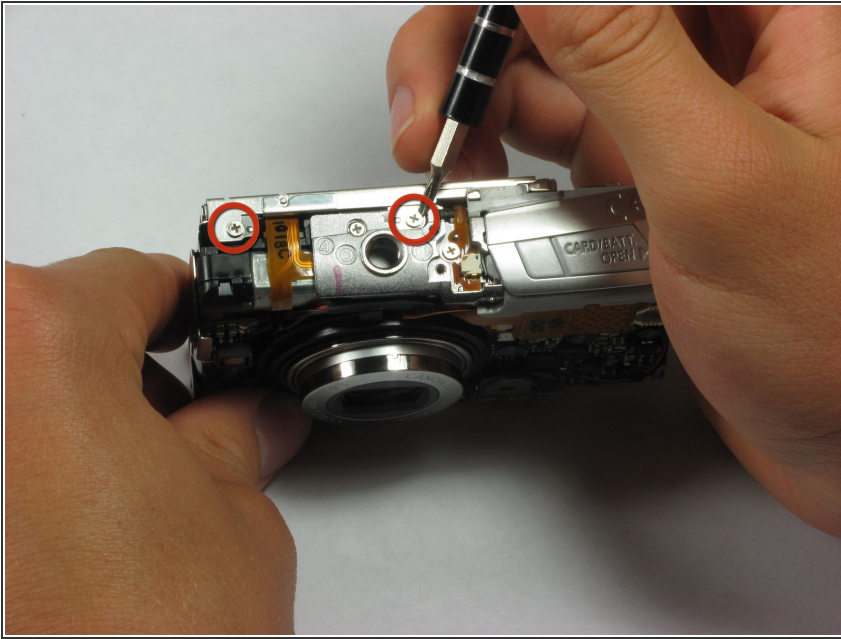
## Step 7 — LCD Screen



- Remove the 1.75 mm Phillips #00 located at the top left of the LCD screen.

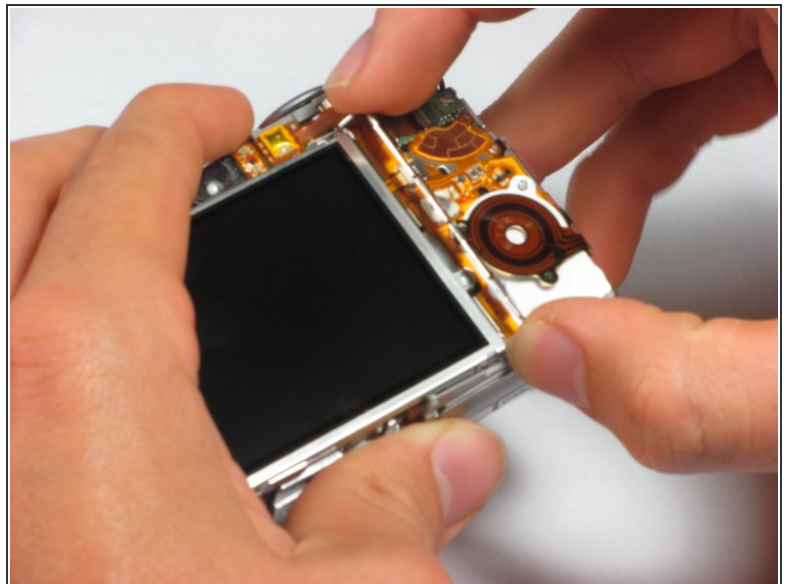
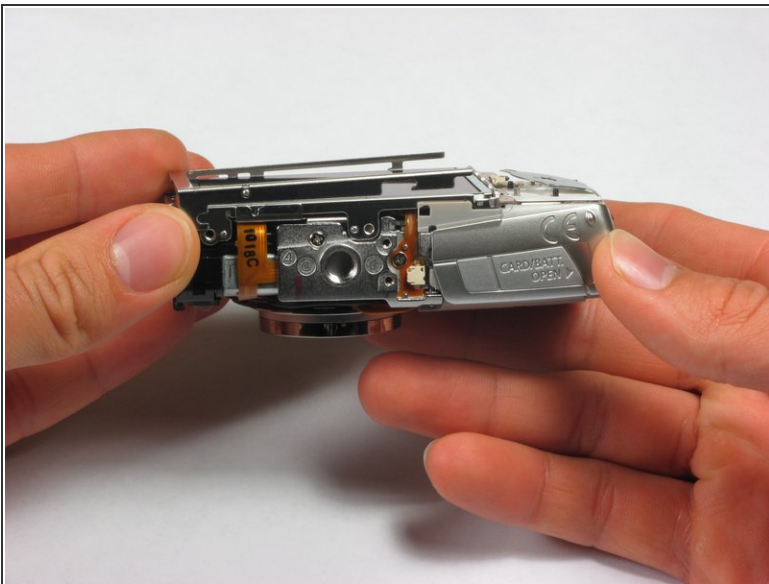


## Step 8



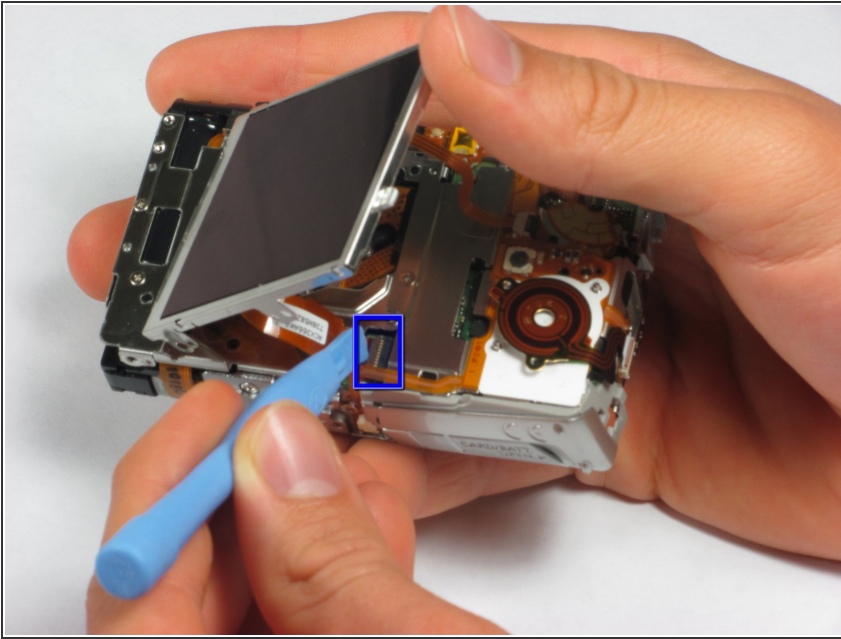
- Remove the two 3.4 mm Phillips #00 located at the bottom of the camera.

## Step 9



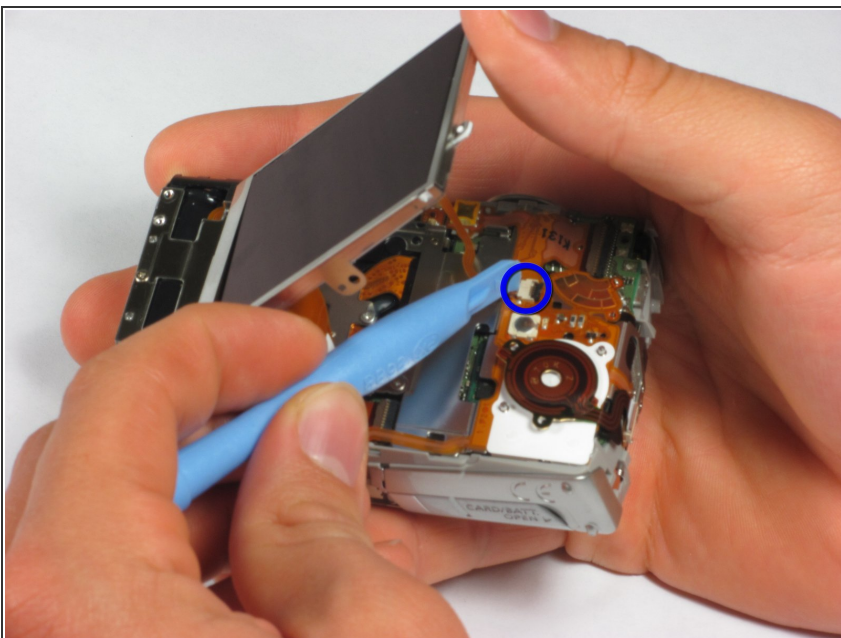
- Remove the two metal frames that hold the LCD panel in place.

## Step 10



- The LCD screen should now only be attached by two LCD data cables.
- Lift the screen from the left side and use a spudger or a small flat head screwdriver to flip the black portion of the connector upward to unlock it.
- Carefully slide the data cable out of the connector.

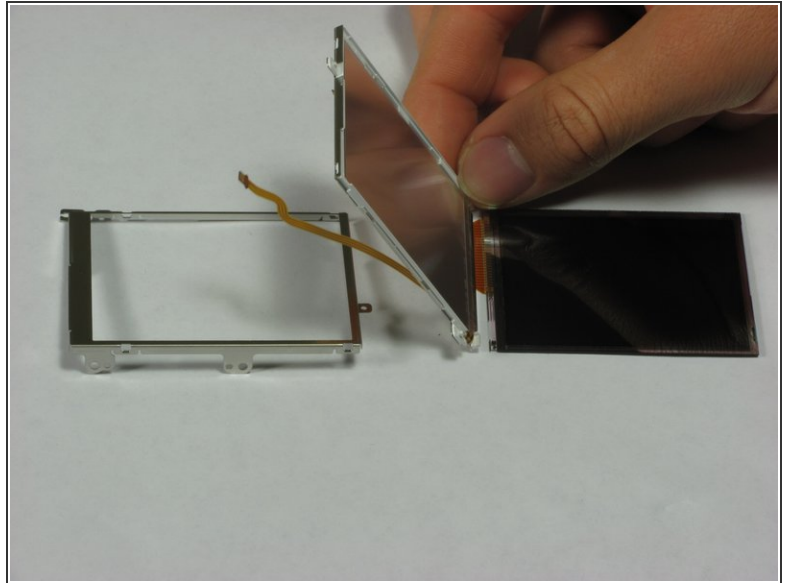
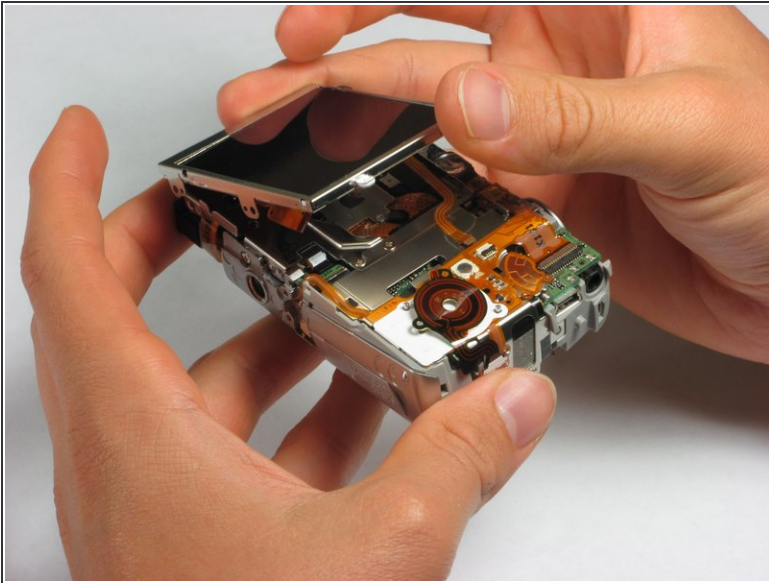
## Step 11



- The LCD should still be connected by the backlight cable.
- To remove the backlight cable, use a spudger or a small flat head screwdriver to unlock the backlight cable.
- Carefully slide out the backlight cable.
- The LCD screen can now be fully detached from the camera body.

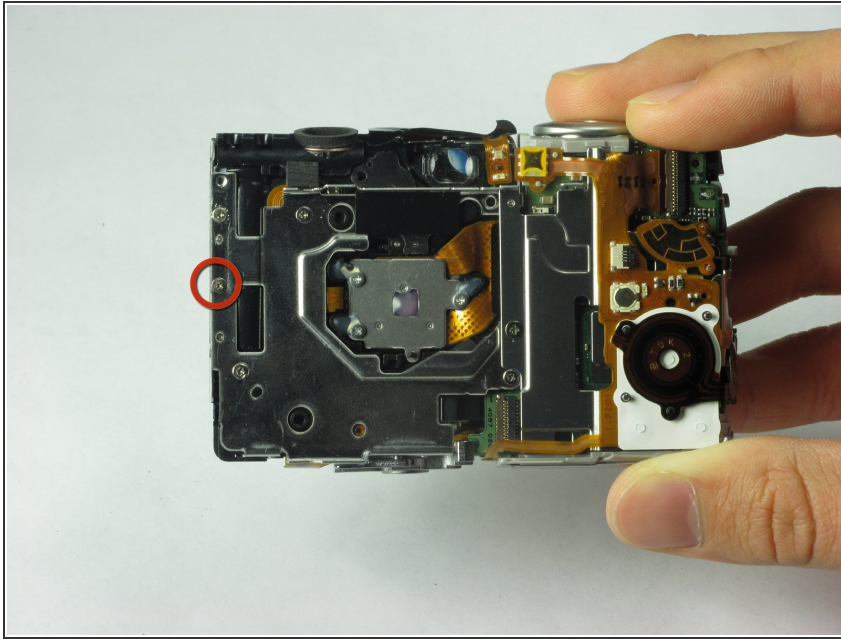


## Step 12



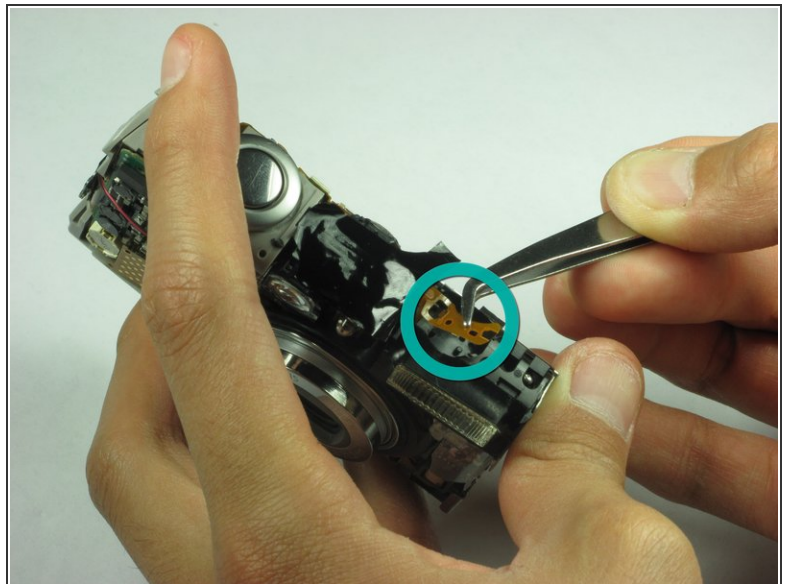
- The LCD screen and housing are now in three pieces:
  - LCD screen
  - LCD screen frame
  - LCD back housing
- The LCD screen itself can now be removed and fixed/replaced.

## Step 13 — Flash Unit



- Remove the 1.85 mm #00 Phillips located on the left side of the camera.

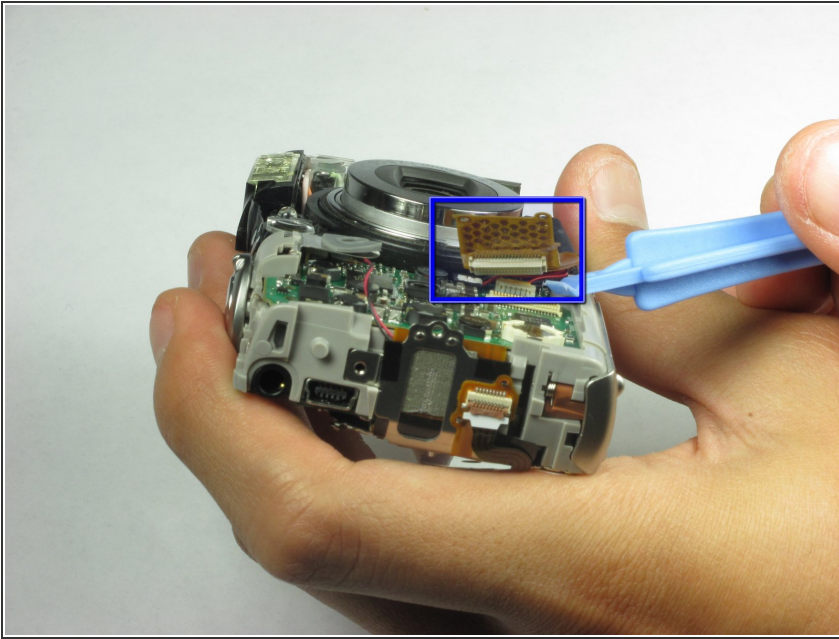
## Step 14



- Use a set of tweezers to remove the speaker located at the top of the camera on the flash unit.
- Next use the tweezers to carefully remove the speaker cable off its respective holders.

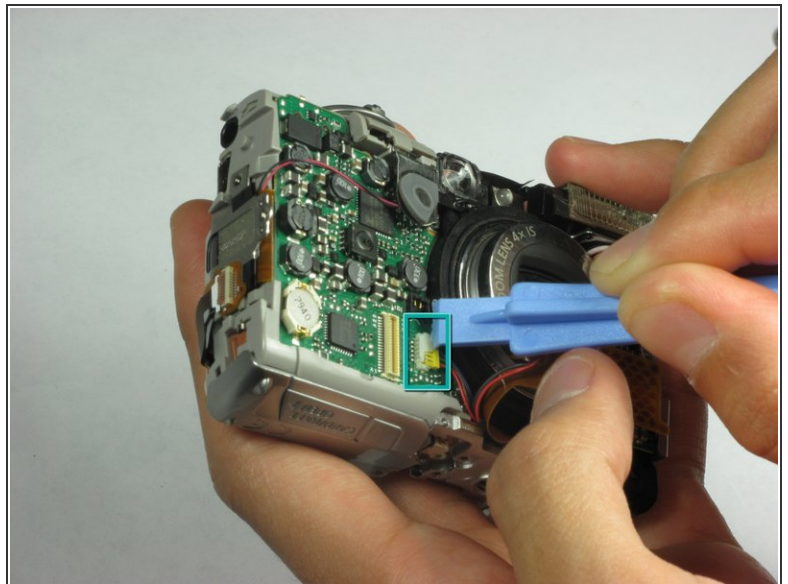
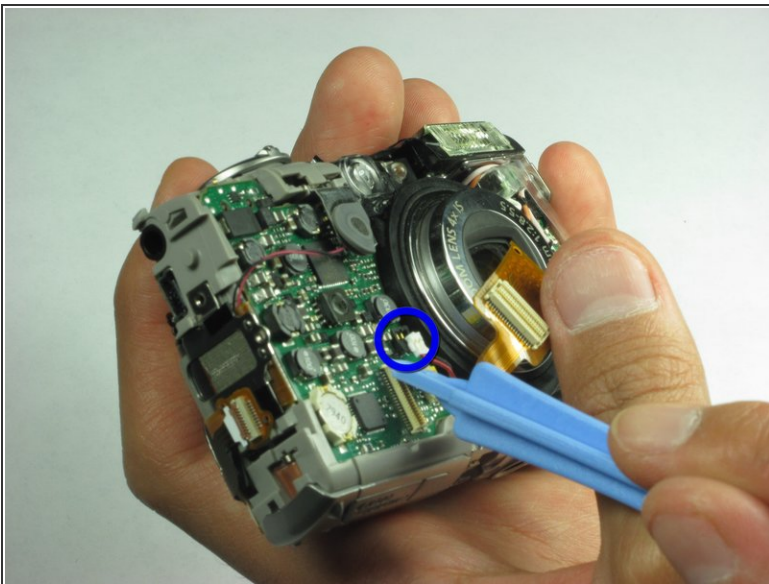


## Step 15



- Use a spudger or a flathead screwdriver to remove the camera lens cable located in the front of the camera.

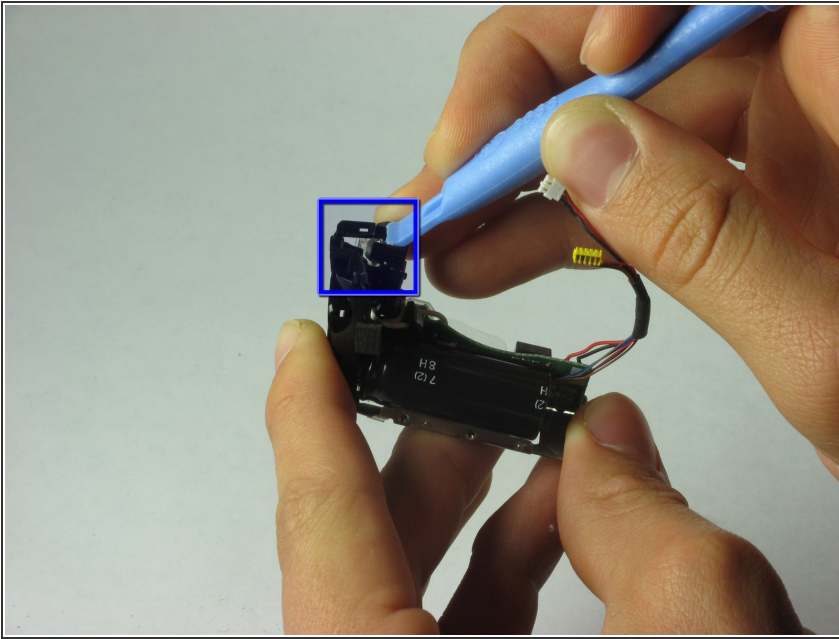
## Step 16



- Use a spudger or a flathead screwdriver and carefully pry out the first flash cable from the bottom of the cable. The white 2 prong power cable pops UP (use spudger below red/black insertion and put upward pressure). For the yellow one, apply pressure horizontally.
- Next use a spudger or a flathead screwdriver and carefully pry out the second flash cable.



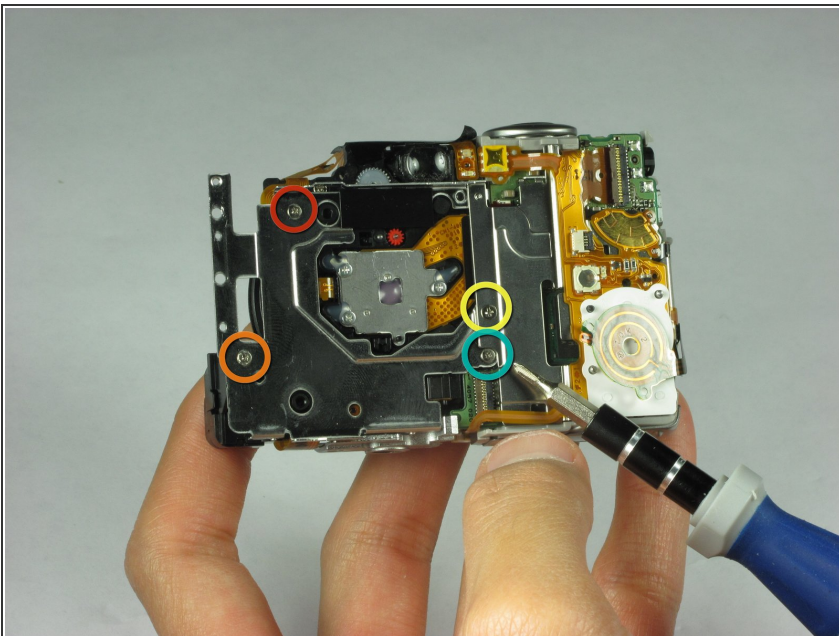
## Step 17



- Gently remove the flash component from the rest of the camera.
- Use a spudger or a flathead screwdriver and carefully pry off the plastic piece on top of the flash unit.
  - The flash unit can now be removed and replaced.

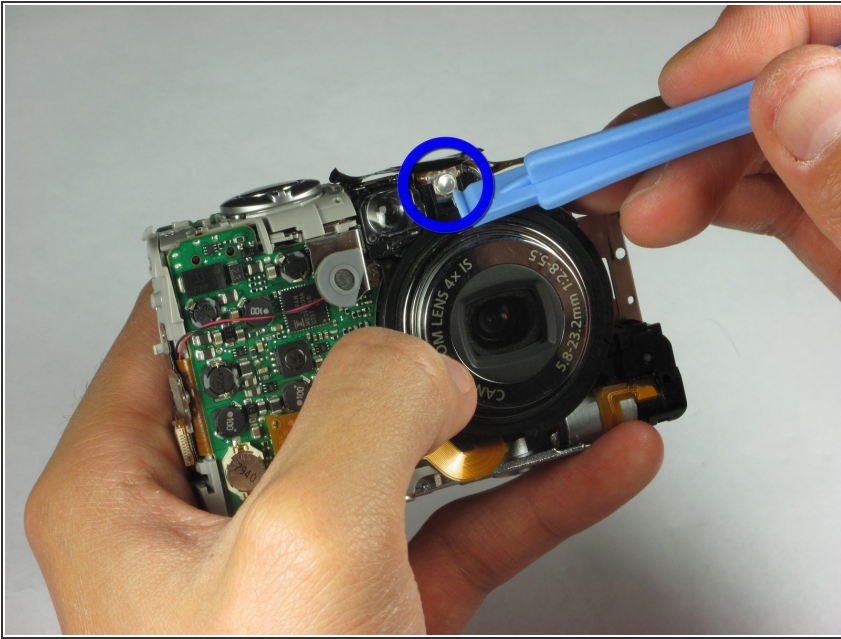
⚠ Be careful not to touch the capacitor attached to the flash unit as it may still be holding a charge!

## Step 18 — Camera Lens



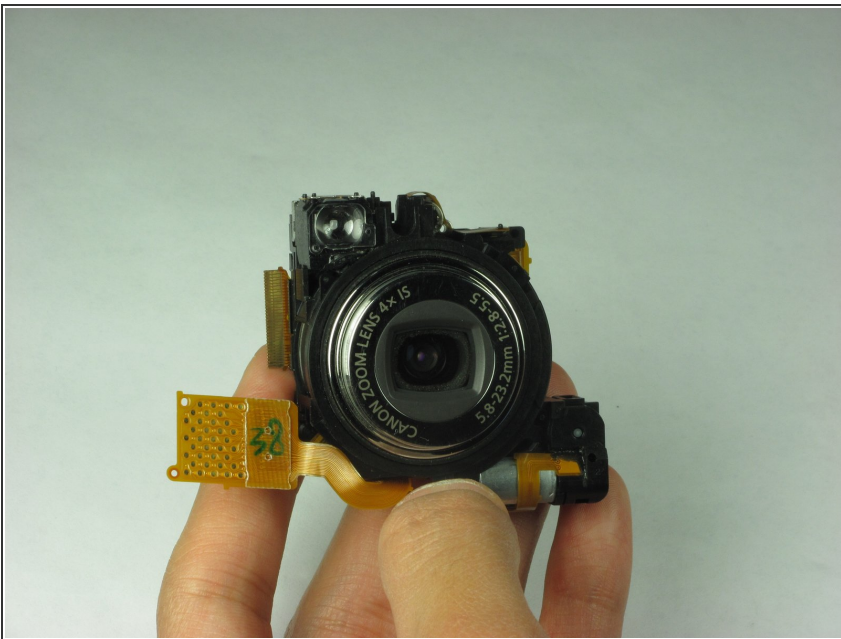
- Remove four screws located on the back of the camera:
  - 6.15 mm #00 Phillips
  - 2.75 mm #00 Phillips
  - 2.15 mm #00 Phillips
  - 2.7 mm #00 Phillips

## Step 19



- Use a spudger or a flathead screwdriver and carefully pry out the bulb located in the front of the camera on top of the camera lens.

## Step 20



- Gently remove the camera lens from the rest of the camera.

To reassemble your device, follow these instructions in reverse order.