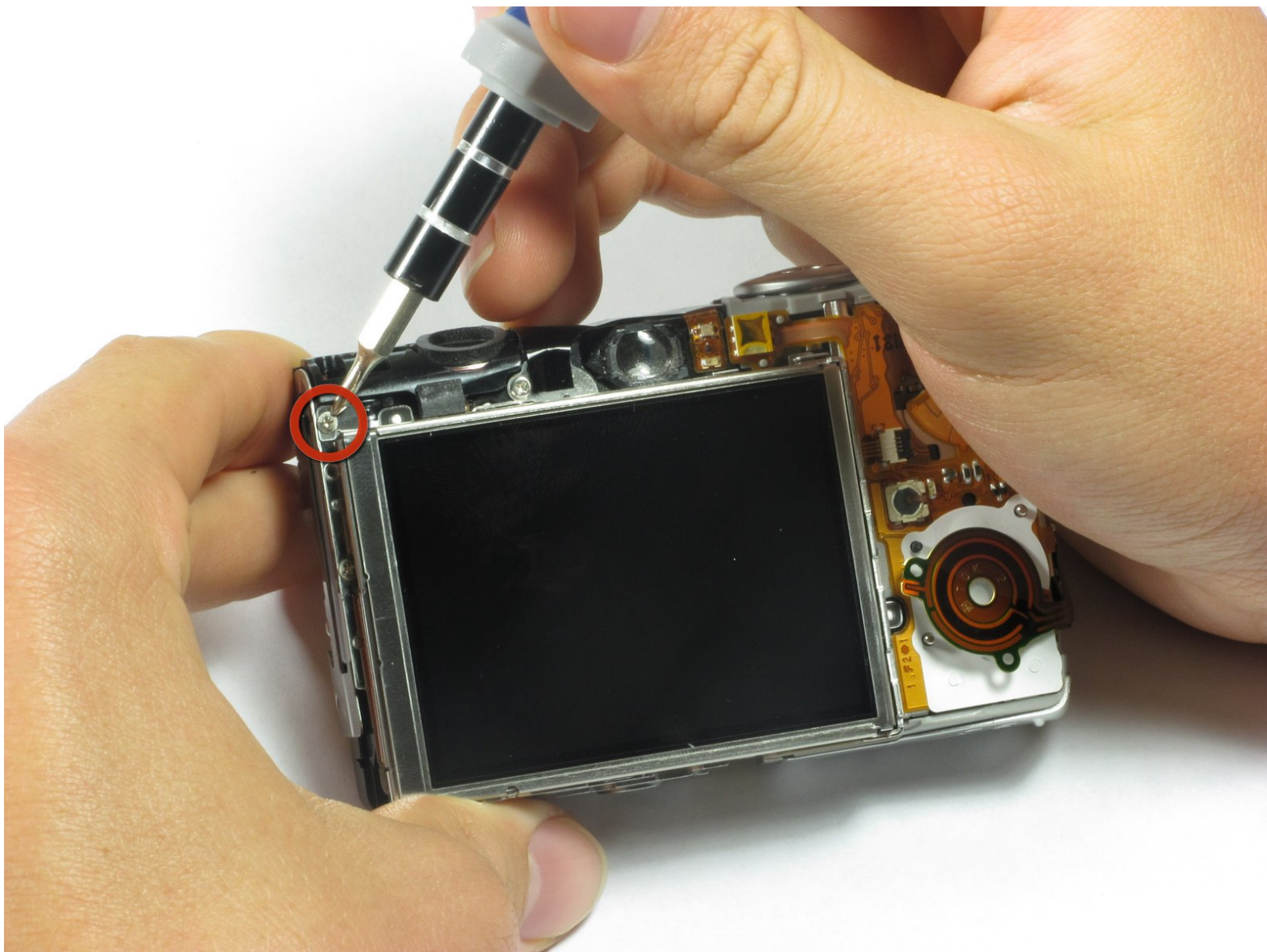




Canon PowerShot SD850 IS LCD Screen Replacement

Written By: Peter Tran



INTRODUCTION

Use this repair guide to replace a broken LCD screen on your Canon PowerShot SD850 IS.



TOOLS:

- [Phillips #00 Screwdriver](#) (1)
 - [iFixit Opening Tools](#) (1)
-

Step 1 — Battery



- Using your fingernail, slide the light gray tab towards edge of camera.
- Slide the light gray door and pull up to open the door.
 - ⓘ In the camera shown in the photos, there is not a Memory Card or Battery.
- Both Battery and Memory Card slots should be visible.

Step 2



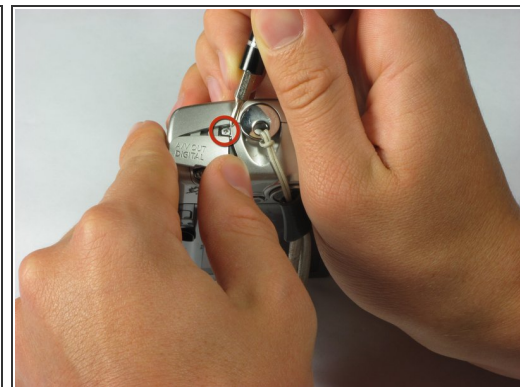
- Use your fingernail and slide the small brown tab towards the edge of the camera.
 - The battery will pop up.
 - Pull battery straight out of battery holder.
- ☑ When putting the battery back in, make sure it the battery is oriented so the terminals connect.

Step 3 — Case



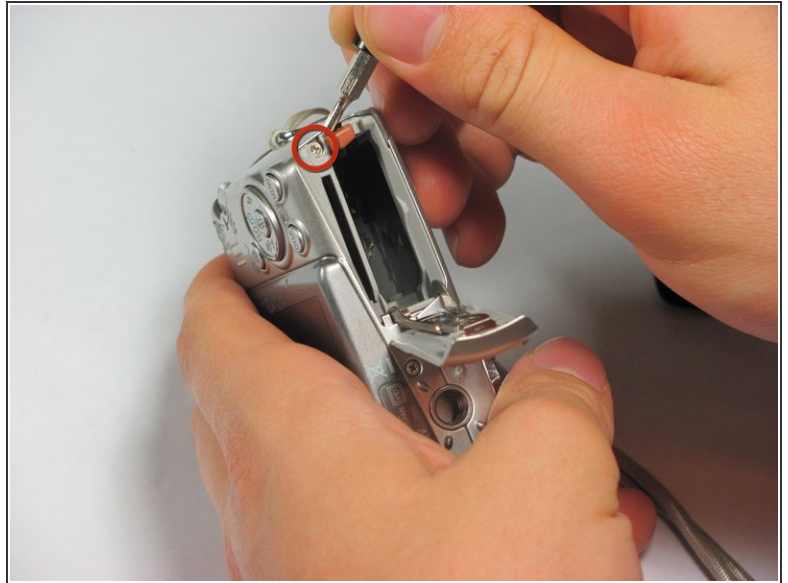
- Remove the following 4 screws:
 - Two 2.8 mm Phillips #00 at the bottom of the camera.
 - Two 2.75 mm Phillips #00 on the opposite side of the wrist strap.

Step 4



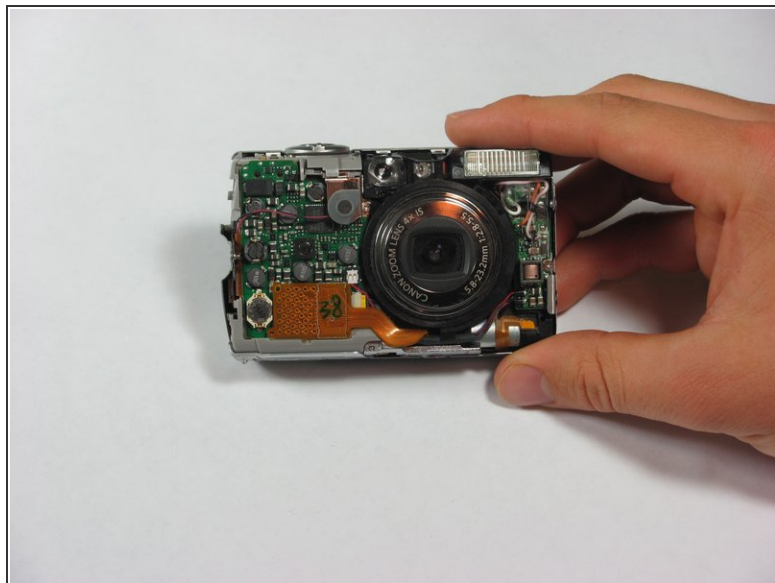
- Open the A/V OUT DIGITAL flap on the side of the wrist strap.
- Remove the 2.75 mm Phillips #00 under the A/V OUT DIGITAL flap on the side of the wrist strap.

Step 5



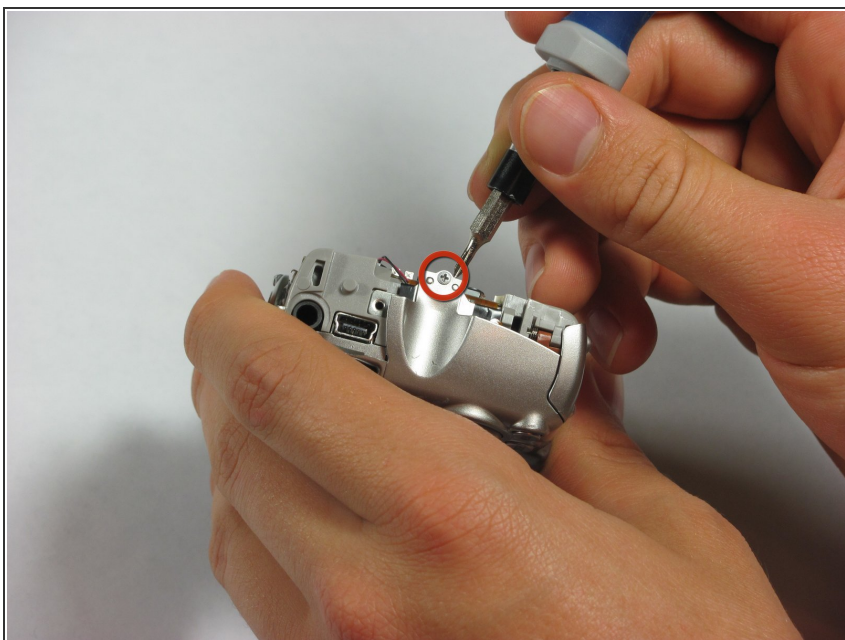
- On the bottom of the camera, use your fingernail to slide the light gray tab towards the edge of the camera.
- Slide light gray door and pull up to open the door.
- Remove the 8.35 mm Phillips #00 next to the brown tab that holds the battery.

Step 6



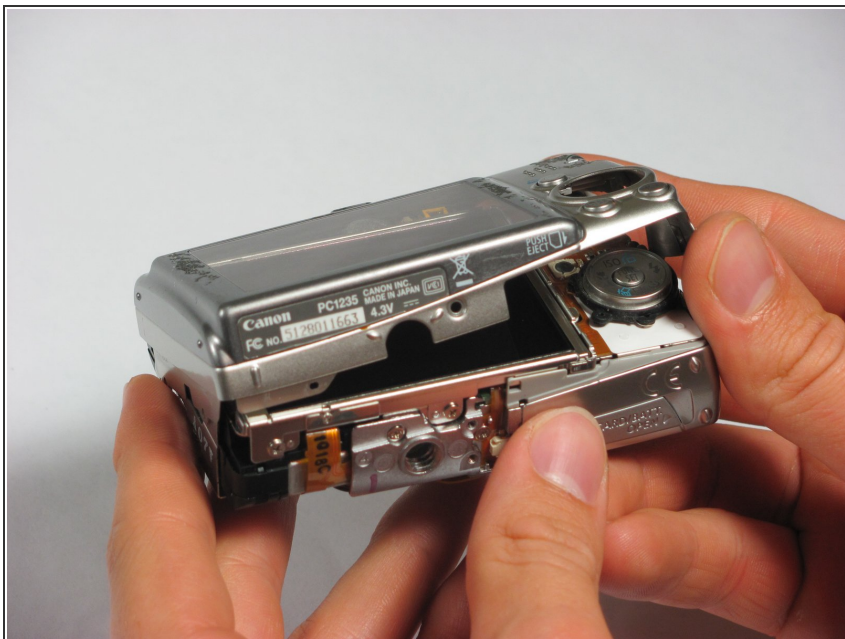
- Gently pull the front cover straight out from the camera. This will expose the wiring on the front of the camera.

Step 7



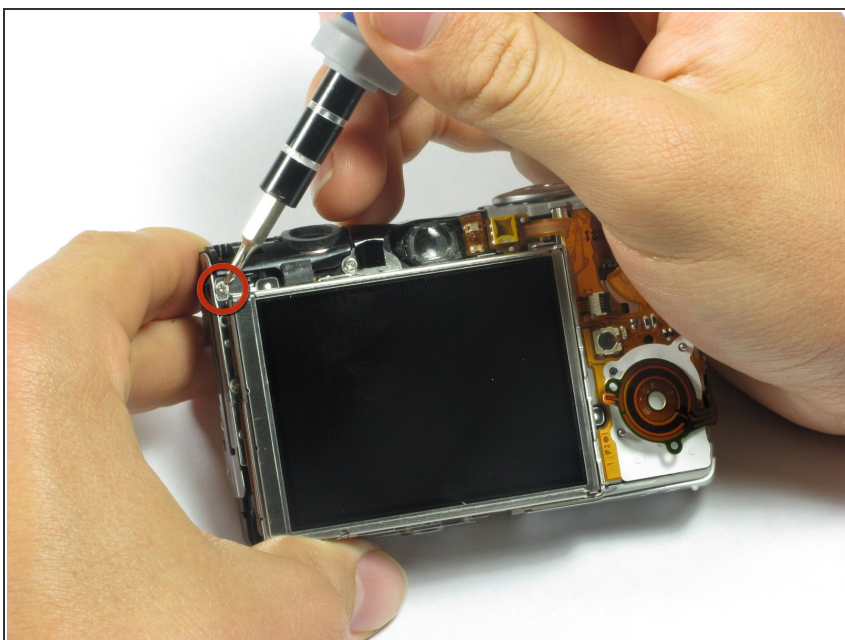
- Remove the 2.75 mm Phillips #00 next to A/V OUT DIGITAL.

Step 8



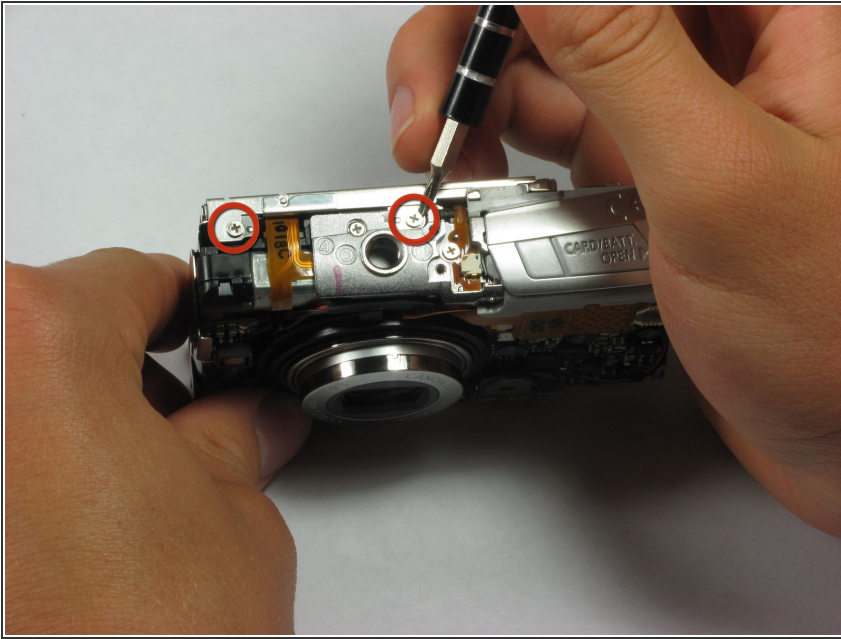
- Slide the back casing (with the screen protector) off to reveal the LCD and back wiring.

Step 9 — LCD Screen



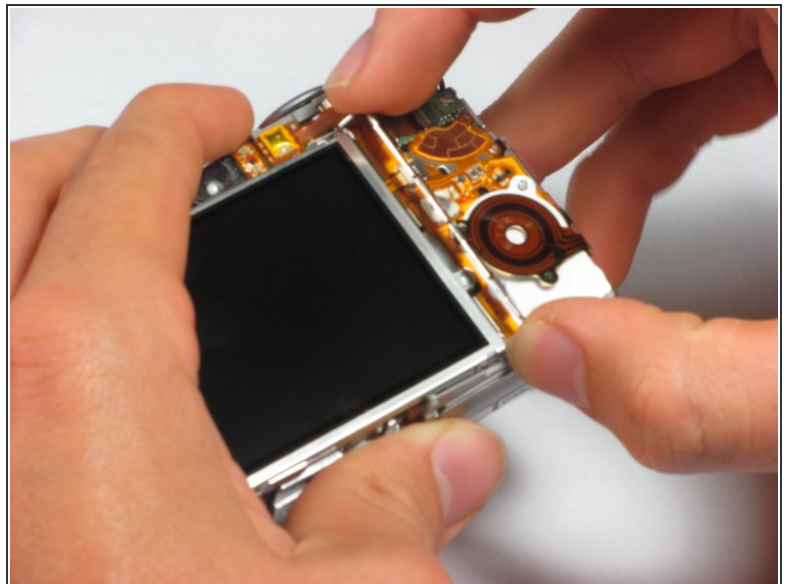
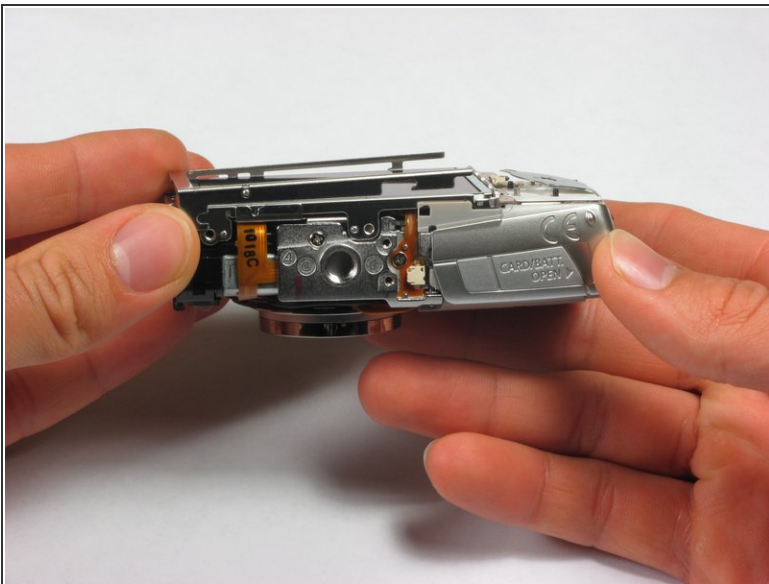
- Remove the 1.75 mm Phillips #00 located at the top left of the LCD screen.

Step 10



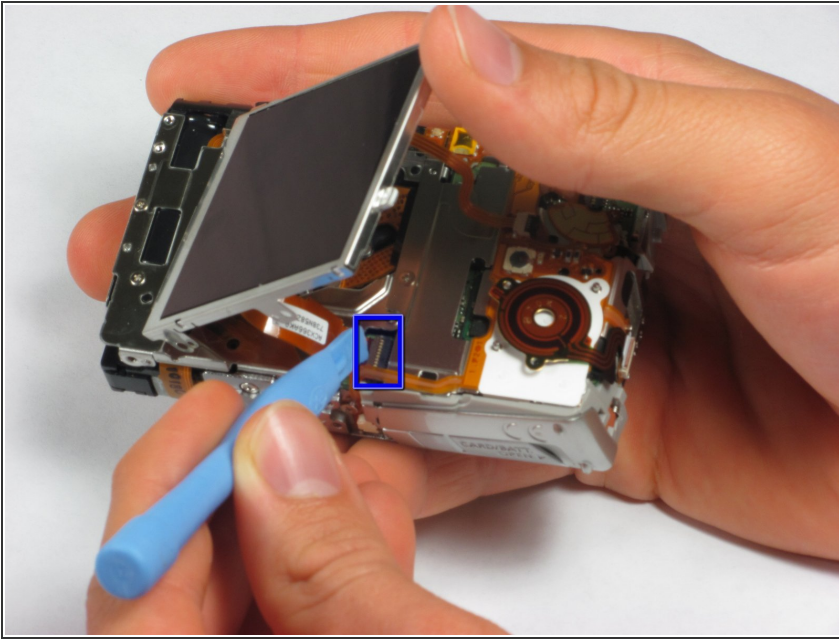
- Remove the two 3.4 mm Phillips #00 located at the bottom of the camera.

Step 11



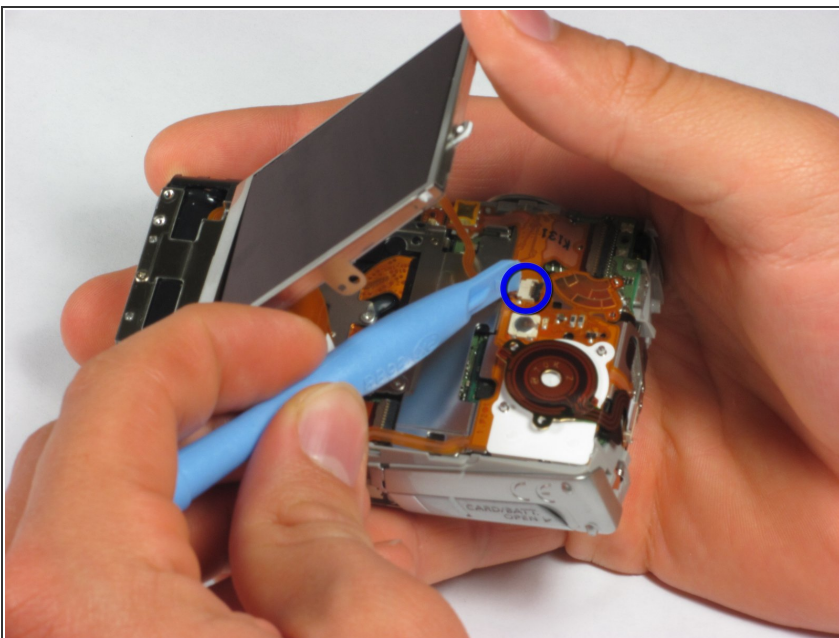
- Remove the two metal frames that hold the LCD panel in place.

Step 12



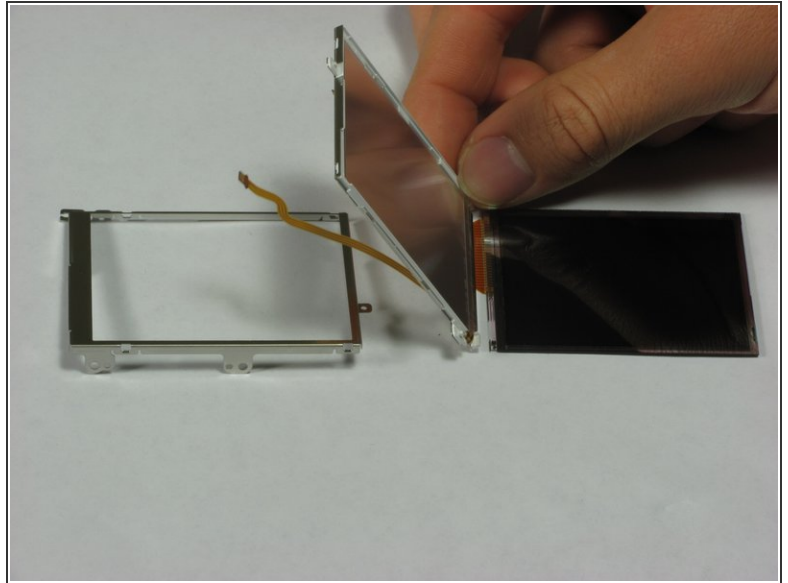
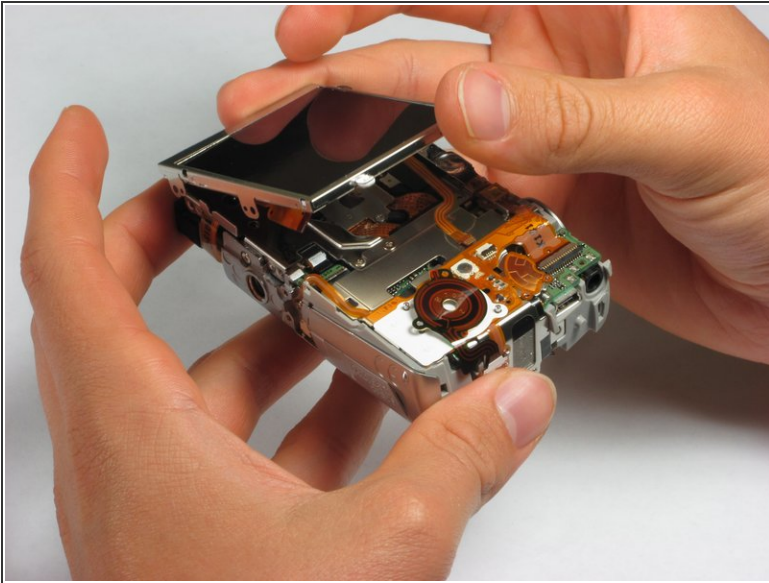
- The LCD screen should now only be attached by two LCD data cables.
- Lift the screen from the left side and use a spudger or a small flat head screwdriver to flip the black portion of the connector upward to unlock it.
- Carefully slide the data cable out of the connector.

Step 13



- The LCD should still be connected by the backlight cable.
- To remove the backlight cable, use a spudger or a small flat head screwdriver to unlock the backlight cable.
- Carefully slide out the backlight cable.
- The LCD screen can now be fully detached from the camera body.

Step 14



- The LCD screen and housing are now in three pieces:
 - LCD screen
 - LCD screen frame
 - LCD back housing
- The LCD screen itself can now be removed and fixed/replaced.

To reassemble your device, follow these instructions in reverse order.