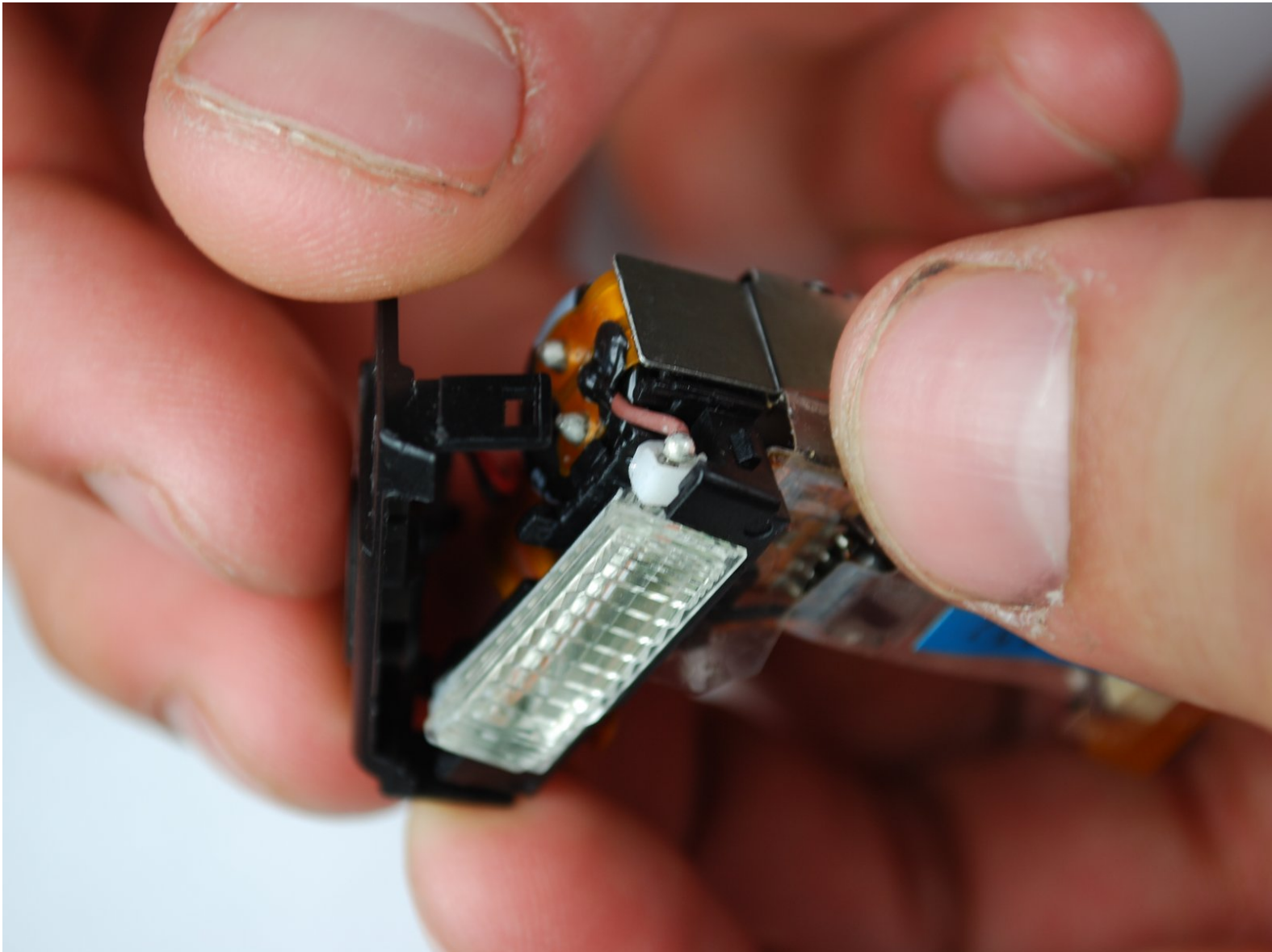




# Canon PowerShot SD870 IS Flash Assembly Replacement

Replace the flash assembly.

Written By: Sam



# INTRODUCTION

Use this guide to remove a broken flash unit from your Canon PowerShot SD870 IS.



## TOOLS:

- [Tweezers](#) (1)
- [Phillips #00 Screwdriver](#) (1)



## PARTS:

- [Replacement Flash Unit](#) (1)

## Step 1 — Outer Case



- Remove the wrist strap, if present.
- Remove the lithium-ion battery.

## Step 2



- Remove the two 4 mm Phillips #00 screws on the bottom of the camera.
- Remove the screw next to the wrist strap attachment.
- Pull up the “A/V OUT DIGITAL” cover and remove the screw above the USB port.

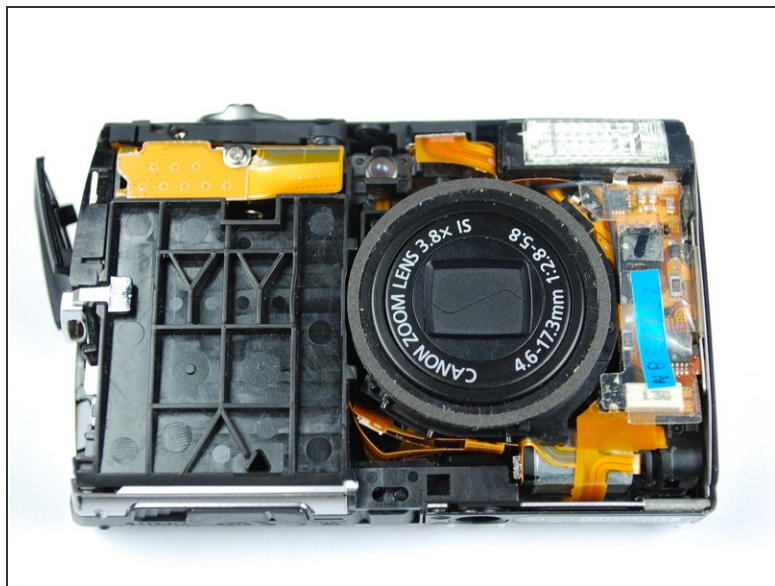
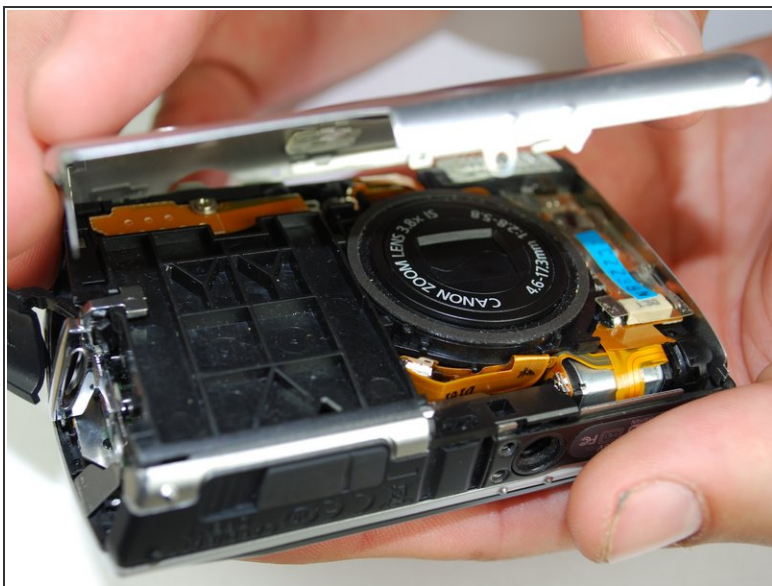


### Step 3



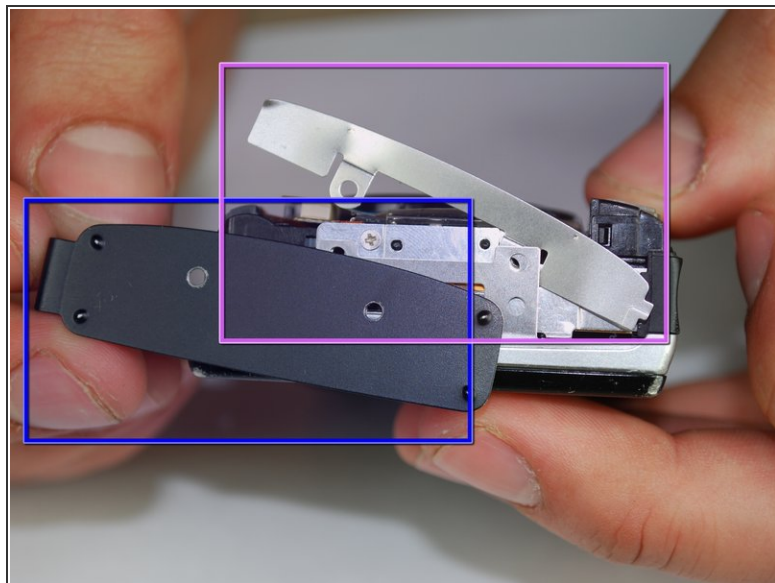
- Carefully unhook the “A/V OUT DIGITAL” cover from the hinge.

### Step 4



- Pull the front cover from the camera by using gentle upward pressure.

## Step 5



- Remove the two Phillips #00 screws from the flat end of the camera.
- Remove the black L-shaped side cover plate.
- Remove the silver u-shaped retainer plate.

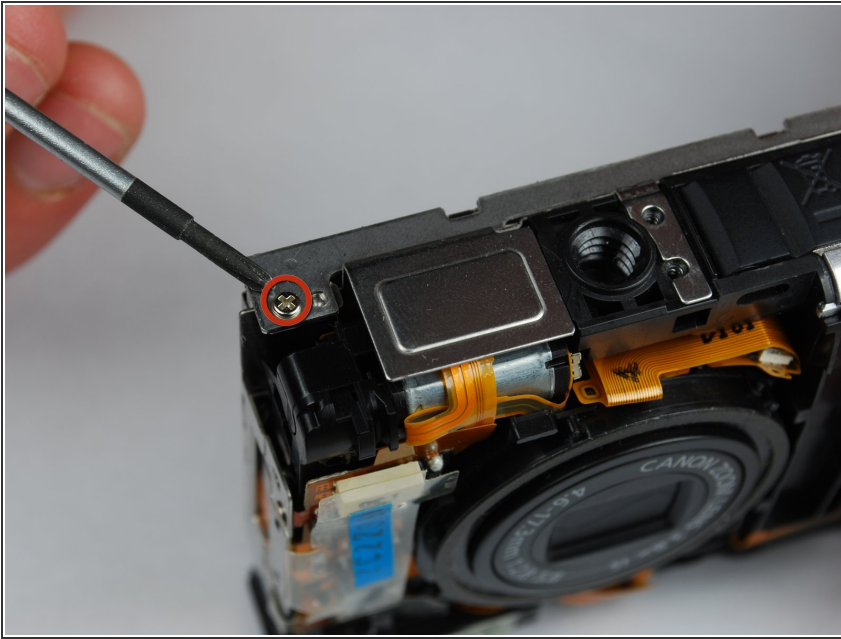
## Step 6



- Slide the back casing off.

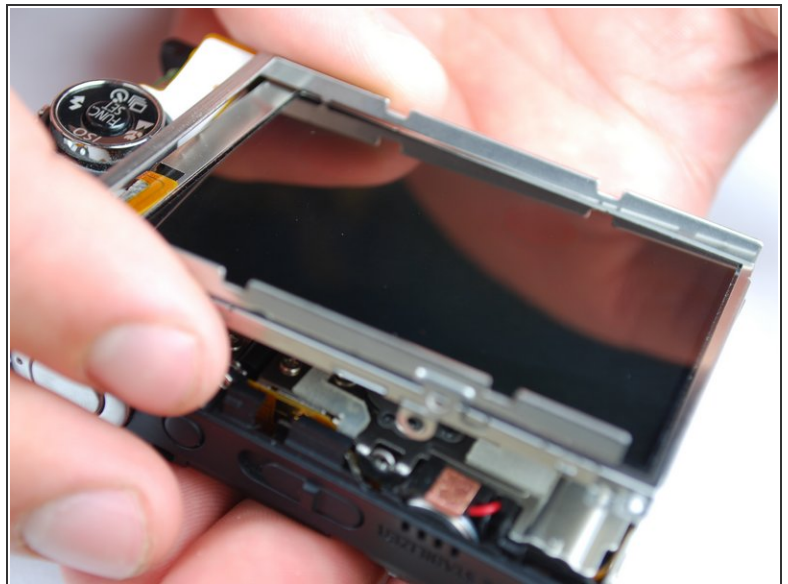
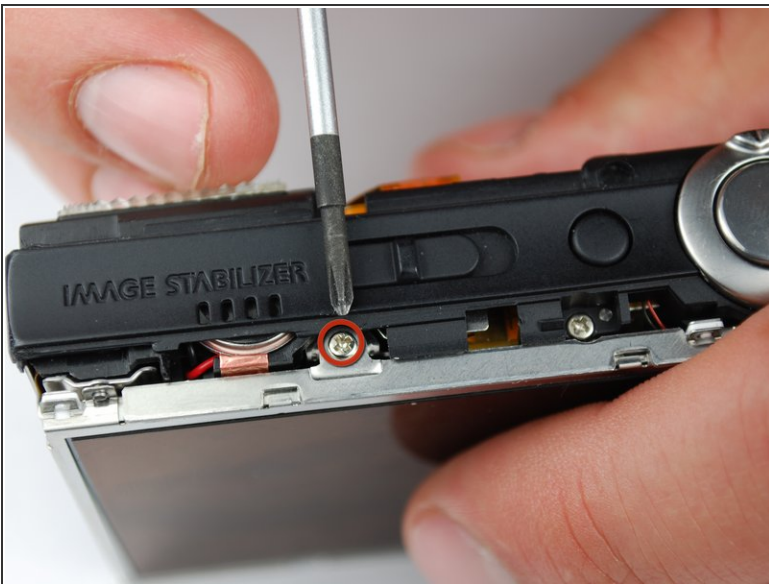


## Step 7 — LCD



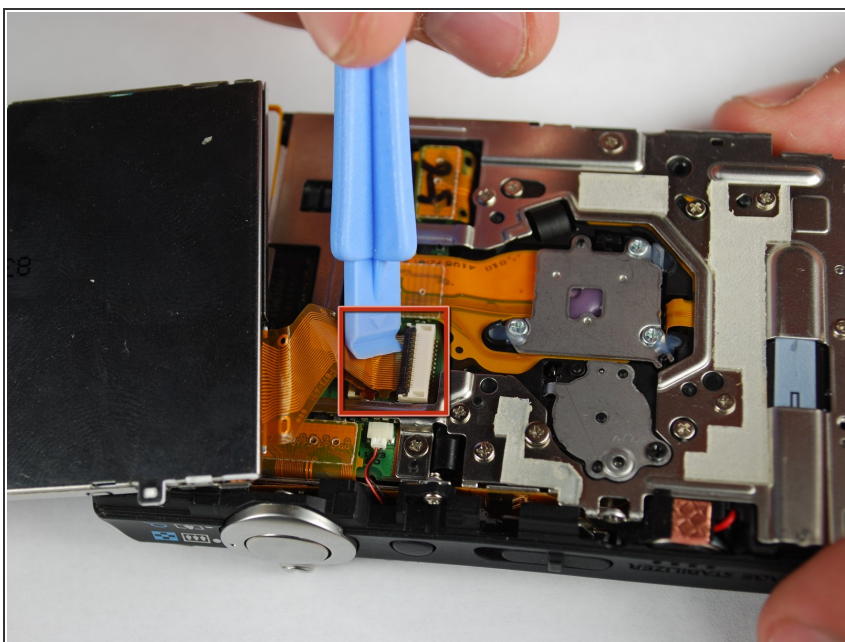
- The first screw that needs to be removed is located on the bottom of the camera, on the left hand side.
- Using a Phillips #00 screwdriver remove the 0.133in silver screw on the bottom left-hand side.

## Step 8



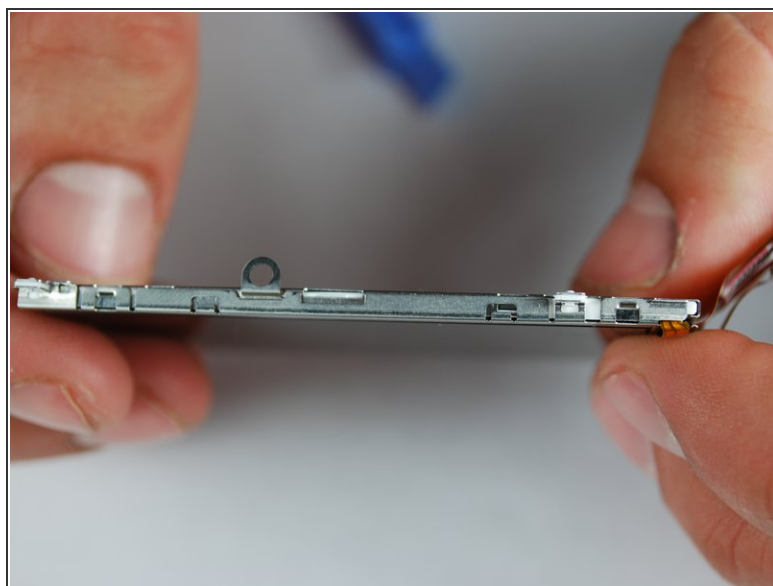
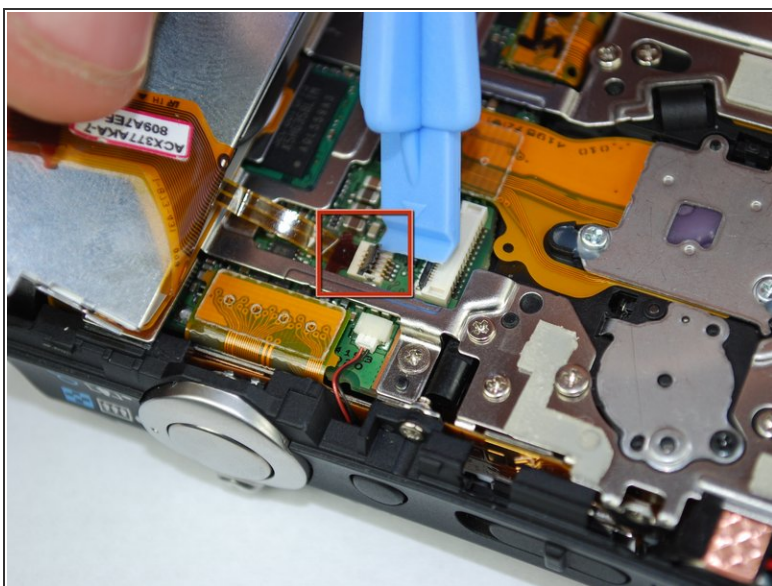
- The second screw that needs to be removed is located on the top of the camera.
- Using the same Phillips head screwdriver, remove the last 0.133in silver screw.
- This will detach a silver U-shaped piece that was holding LCD screen on. Remove the piece and put it to the side.

## Step 9



- The LCD screen should now only be attached by the LCD data cable.
- Lift the screen from the right side and use a small screwdriver or other small opening device to flip the black portion of the connector upward to unlock it.
- Carefully slide the data cable out of the connector.
- The LCD should still be connected by the backlight cable.

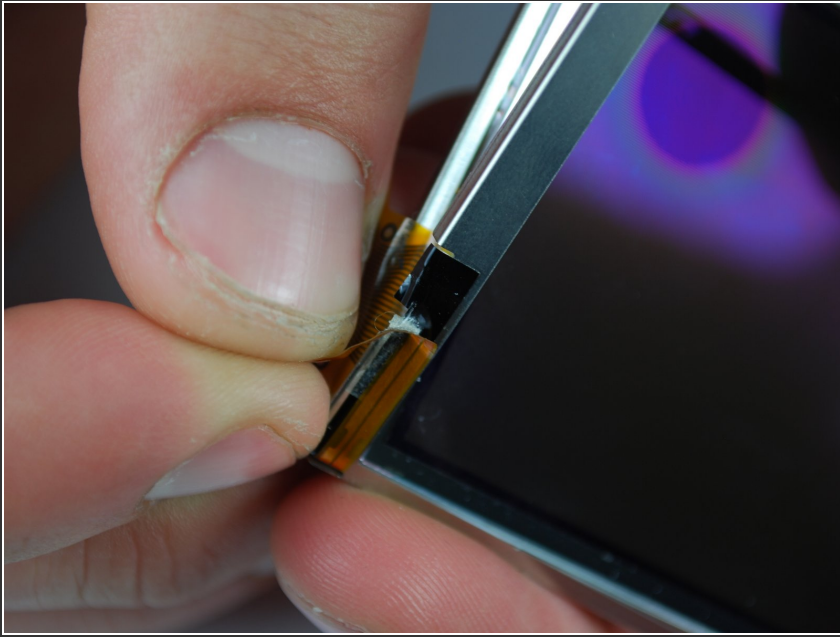
## Step 10



- To remove the backlight cable, use another small opening device to unlock the backlight cable.
- Carefully slide out the backlight cable.
- The LCD screen should now be fully detached from the camera body.

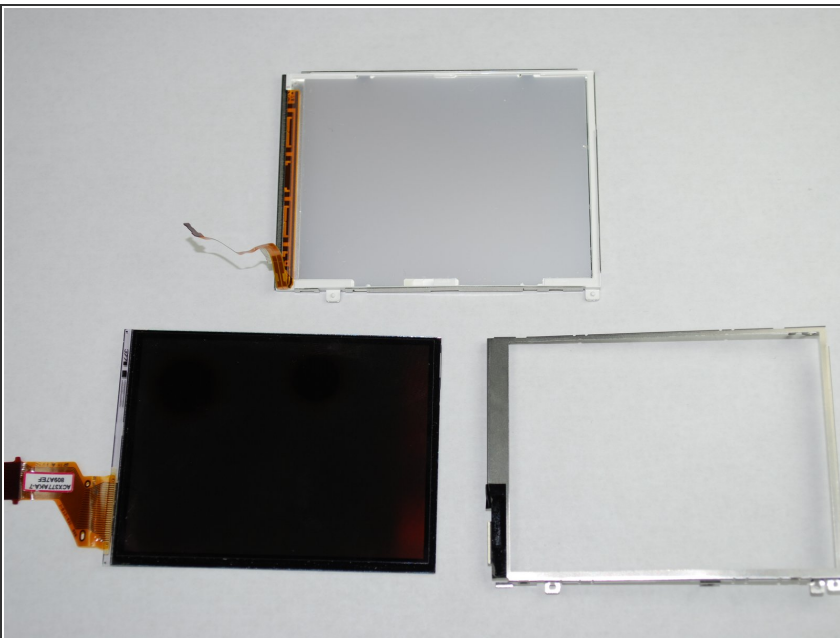


## Step 11



- The LCD screen casing is connected by 4 claws located on the top and bottom on the left and right hand side.
- Carefully disengage the claws by gently prying them off one by one.
  - Once the claws are disengaged, the back of the casing will still be connected to the front casing by the backlight cable.
- Carefully peel the backlight cable off of the casing.

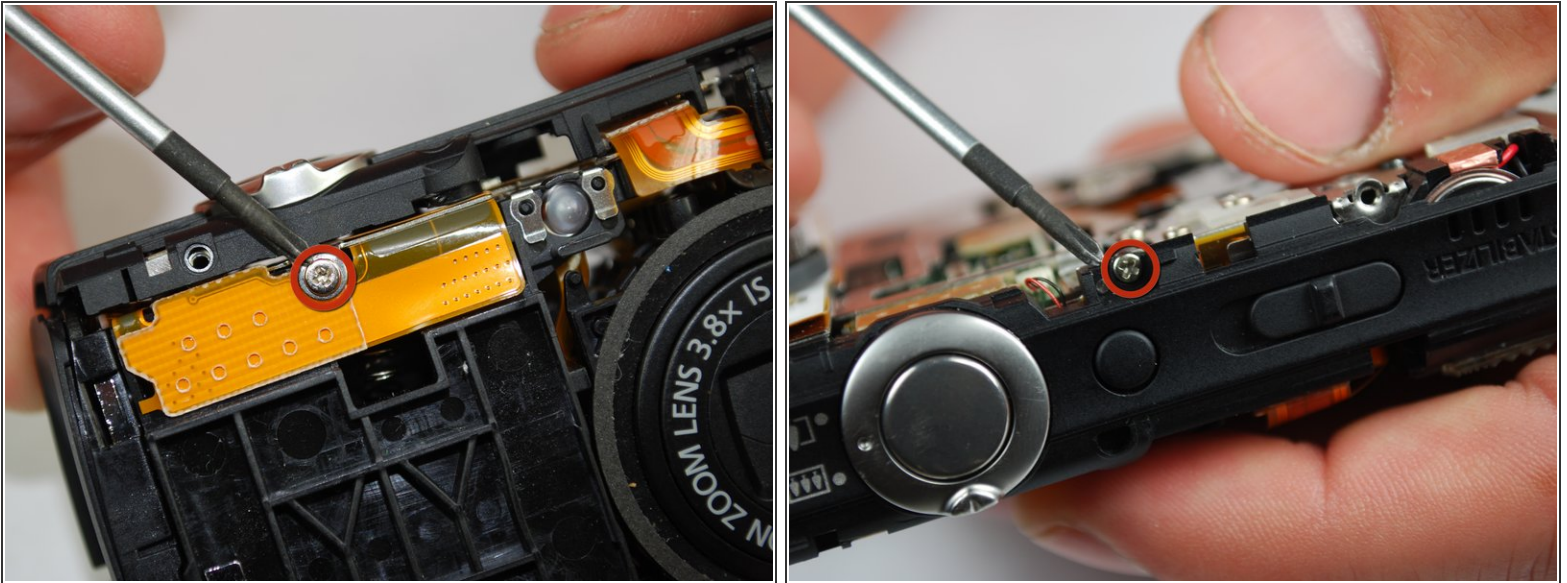
## Step 12



- The LCD screen and housing should now be in three pieces:
  - LCD screen
  - LCD screen frame
  - LCD screen back housing
- The LCD screen itself can now be removed and fixed/replaced.

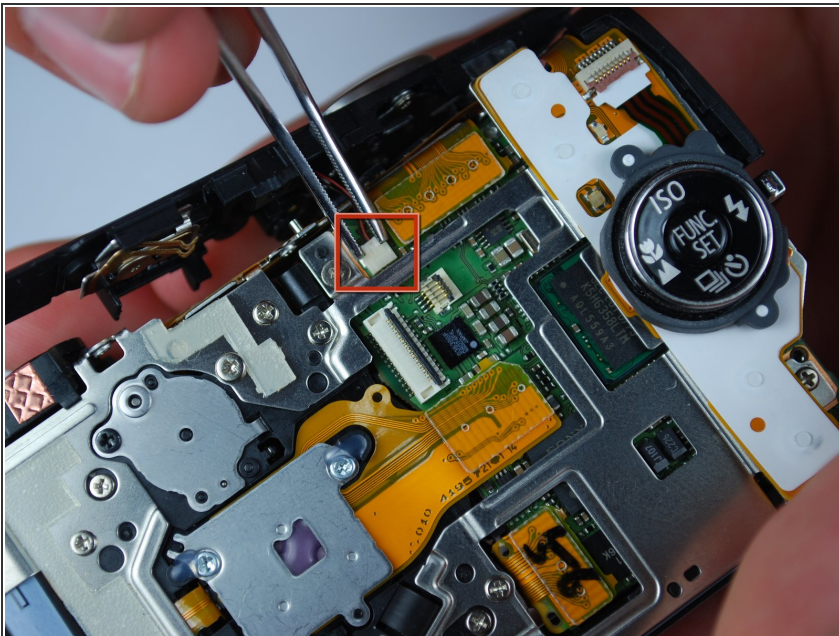


## Step 13 — Shutter Release Button



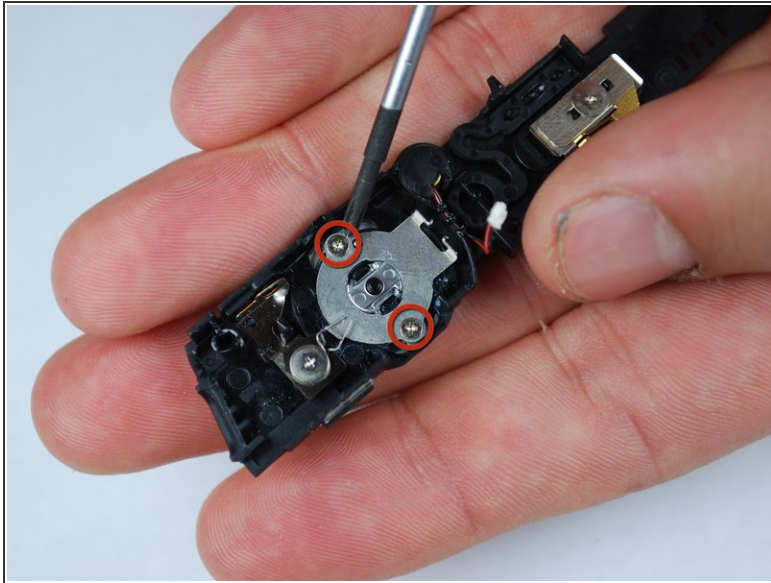
- With the case and LCD screen removed, you are ready to remove the release button.
  - Begin by using the Philips #00 screwdriver to remove two silver 0.159in screws on the top and front of the camera.

## Step 14



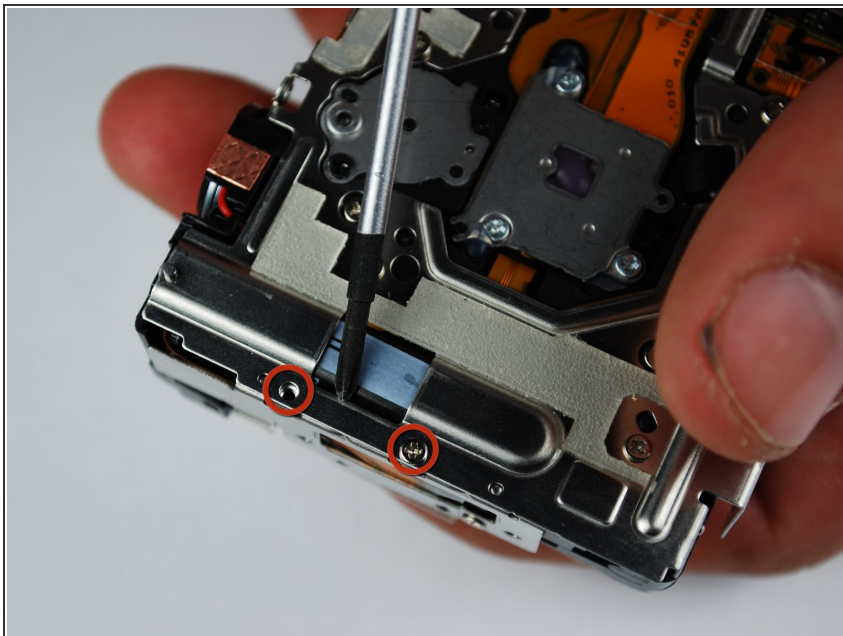
- The top plastic piece holding the release button should be held on only by a red-and-black wire connector to the logic board.
  - Remove the connector from the logic board and detach the release button housing from the camera.

## Step 15



- With the plastic housing for the release button removed from the camera, use the Philips #00 screwdriver to remove two silver 0.090in screws.
- The release button can now be removed and fixed or replaced.

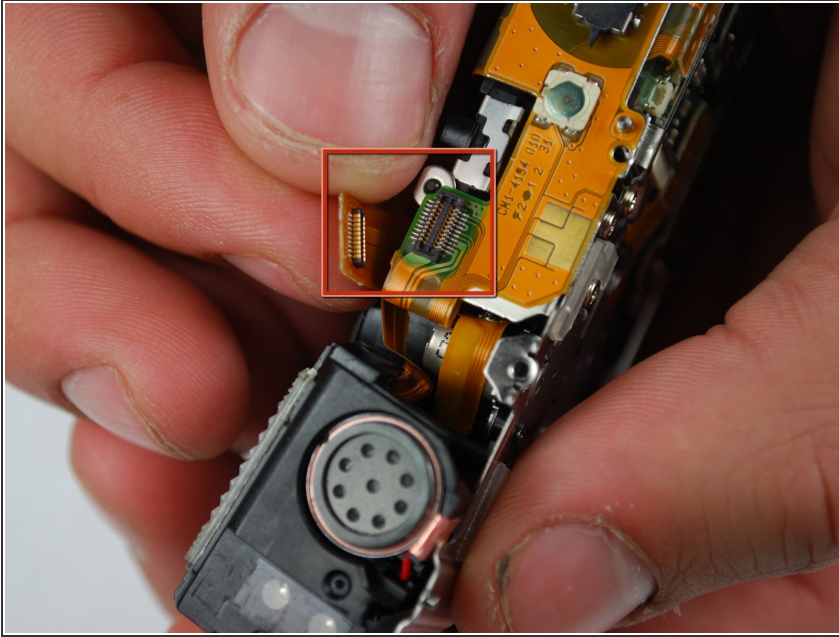
## Step 16 — Flash Assembly



- Begin by removing two silver 0.080in screw on the left side of the camera.

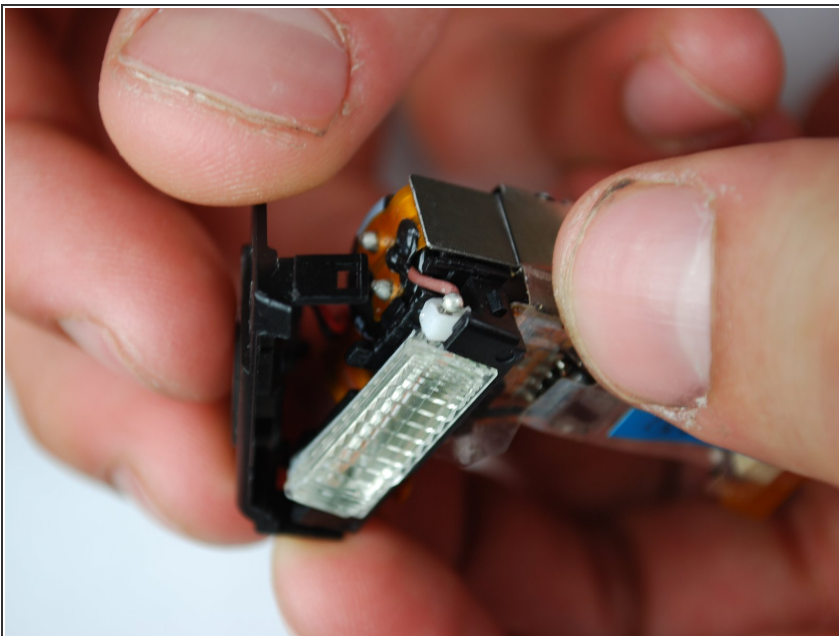


## Step 17



- With the case, LCD screen, and release button housing removed, the broken flash unit can be removed and replaced.
- Begin by disconnecting the hanging flash/speaker unit from the connector on top of the camera.

## Step 18



- Next, gently disconnect the plastic piece on top of the flash/speaker wiring by prying open the claws on either side.
  - The flash unit can now be removed and replaced.
- ⚠ Be careful not to touch the capacitor attached to the flash unit as it may still be holding a charge!

To reassemble your device, follow these instructions in reverse order.