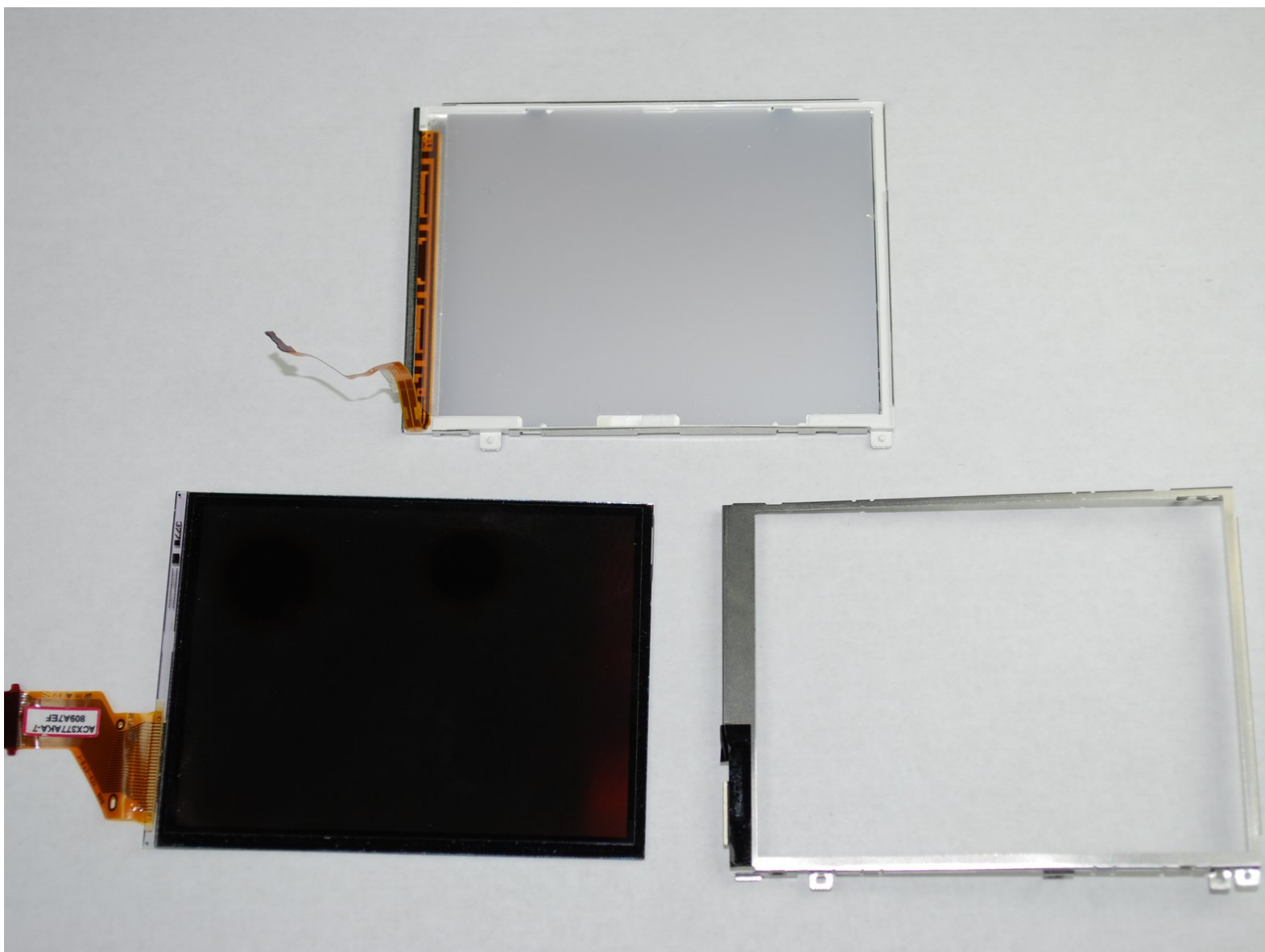




# Canon PowerShot SD870 IS LCD Replacement

Replace the LCD.

Written By: Sam



---

## INTRODUCTION

Use this repair guide to replace a broken LCD screen on your Canon PowerShot SD870 IS.

---



### TOOLS:

- [Tweezers](#) (1)
  - [Phillips #00 Screwdriver](#) (1)
-

## Step 1 — Outer Case



- Remove the wrist strap, if present.
- Remove the lithium-ion battery.

## Step 2



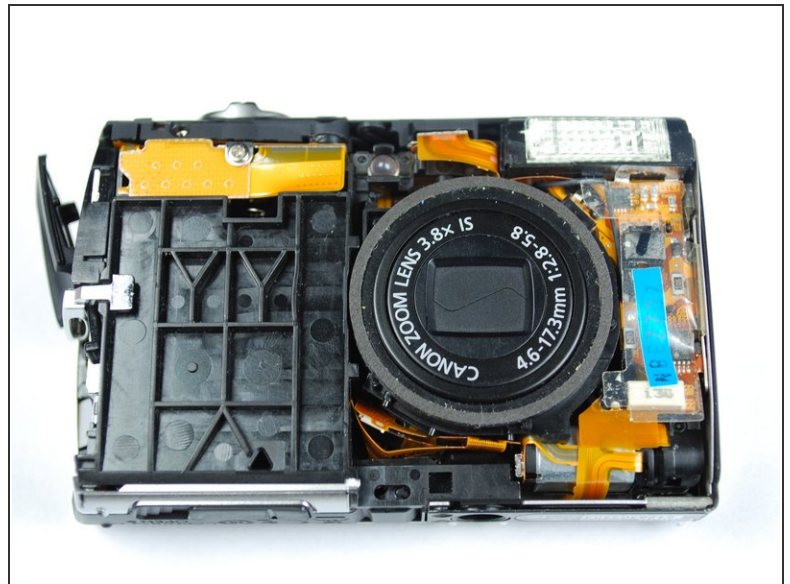
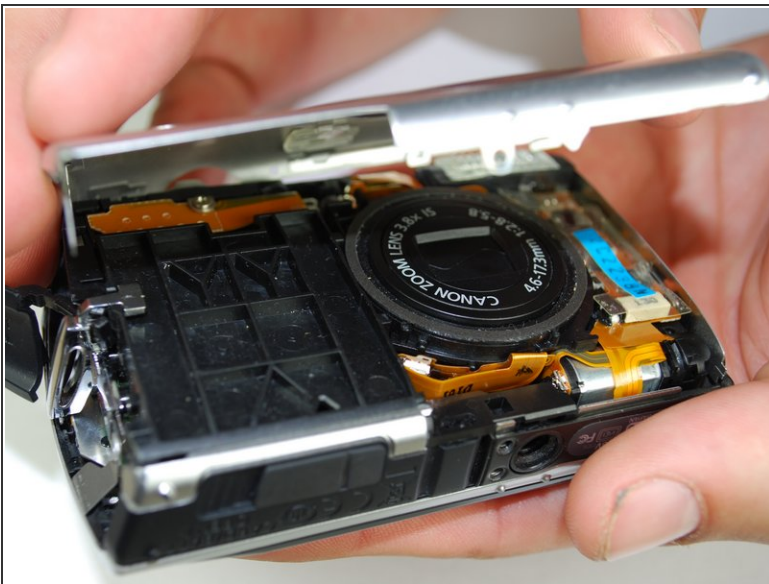
- Remove the two 4 mm Phillips #00 screws on the bottom of the camera.
- Remove the screw next to the wrist strap attachment.
- Pull up the “A/V OUT DIGITAL” cover and remove the screw above the USB port.

### Step 3



- Carefully unhook the “A/V OUT DIGITAL” cover from the hinge.

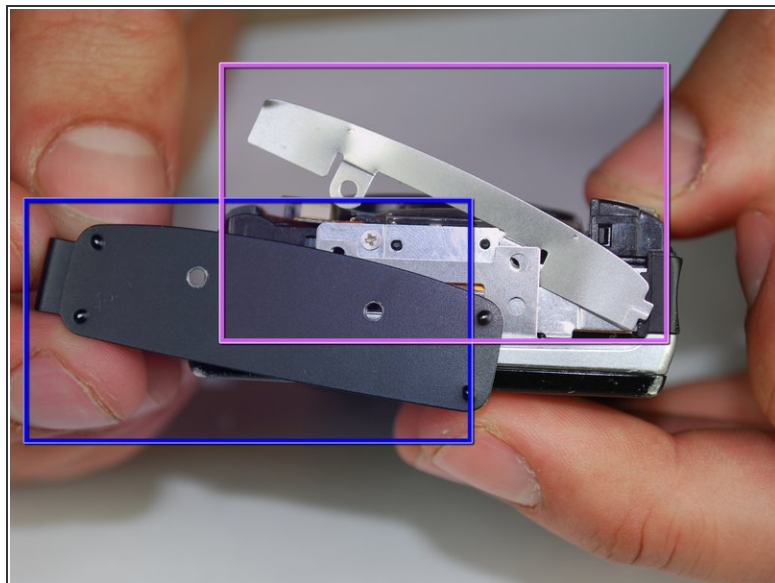
### Step 4



- Pull the front cover from the camera by using gentle upward pressure.



## Step 5



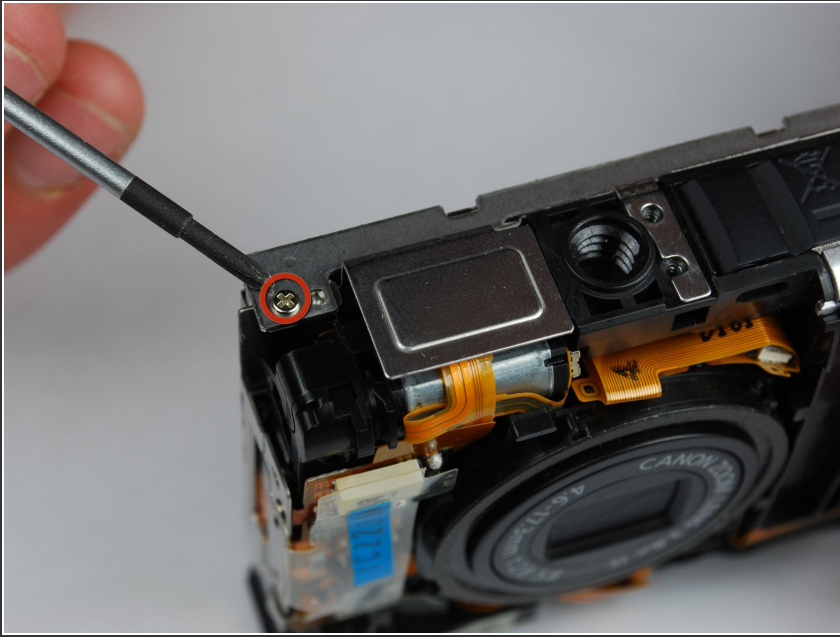
- Remove the two Phillips #00 screws from the flat end of the camera.
- Remove the black L-shaped side cover plate.
- Remove the silver u-shaped retainer plate.

## Step 6



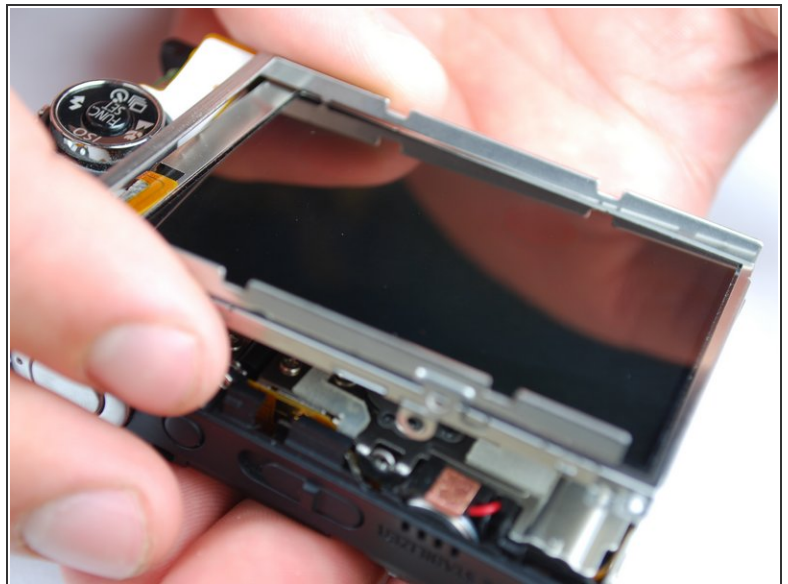
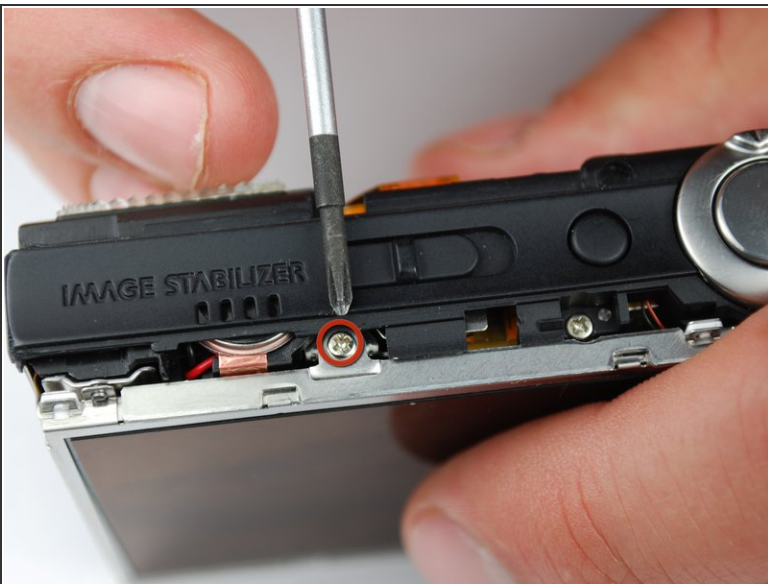
- Slide the back casing off.

## Step 7 — LCD



- The first screw that needs to be removed is located on the bottom of the camera, on the left hand side.
- Using a Phillips #00 screwdriver remove the 0.133in silver screw on the bottom left-hand side.

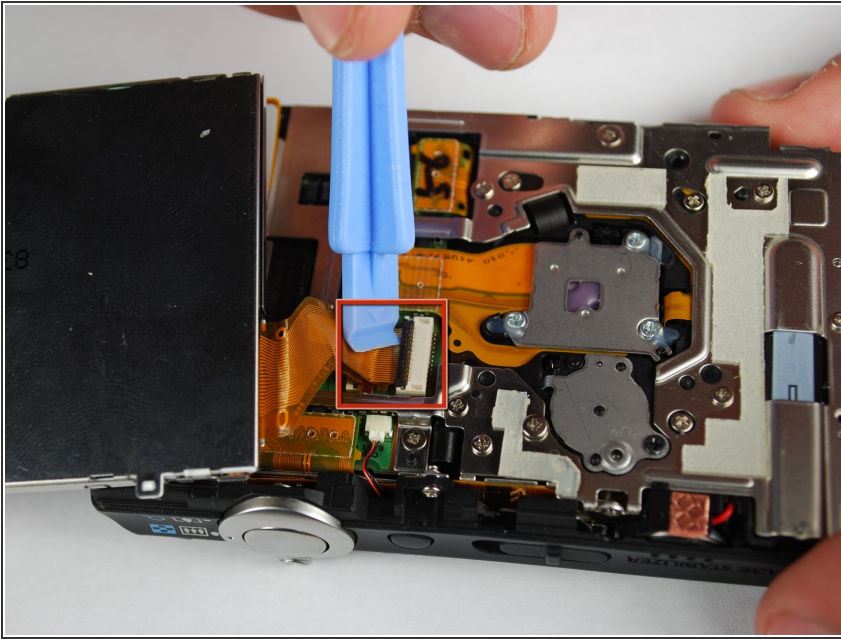
## Step 8



- The second screw that needs to be removed is located on the top of the camera.
- Using the same Phillips head screwdriver, remove the last 0.133in silver screw.
- This will detach a silver U-shaped piece that was holding LCD screen on. Remove the piece and put it to the side.

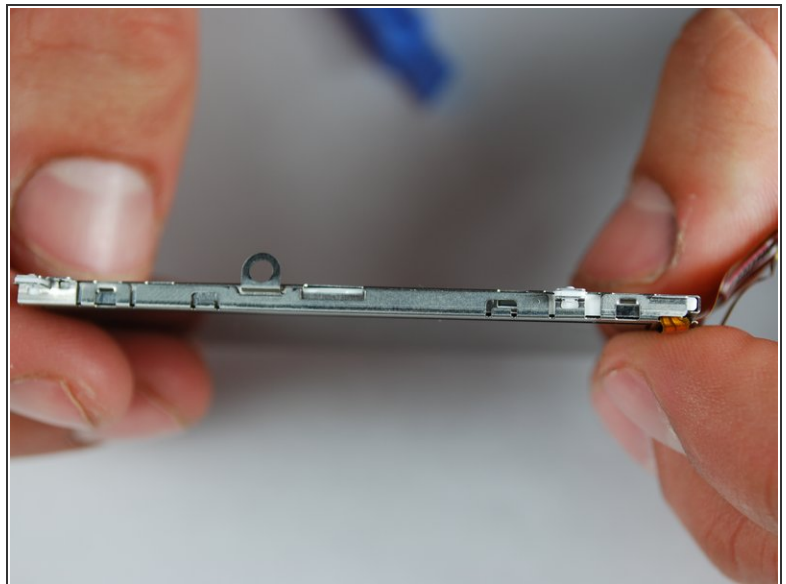
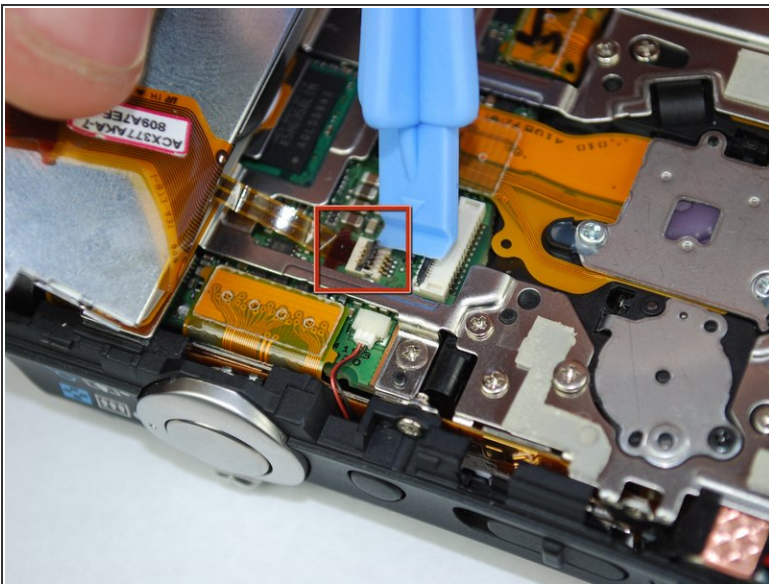


## Step 9



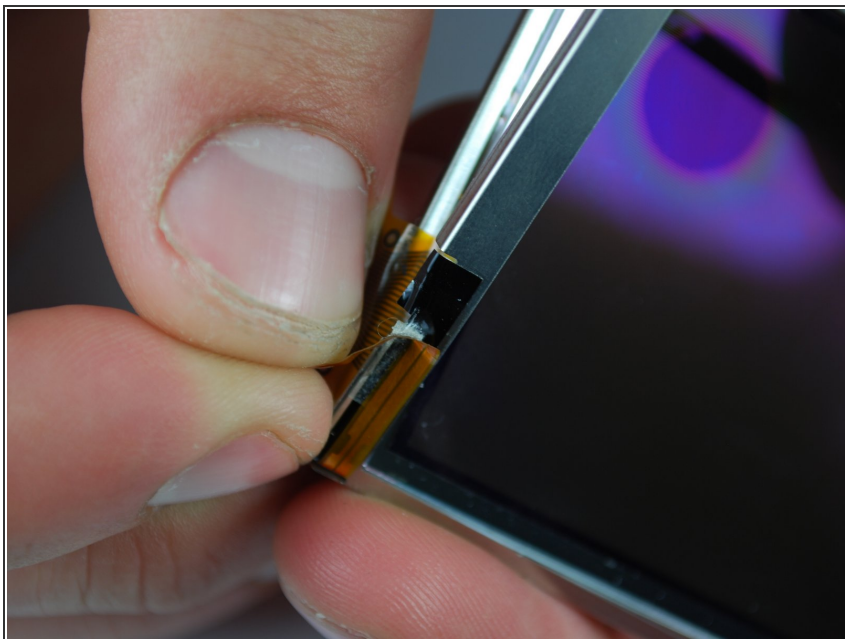
- The LCD screen should now only be attached by the LCD data cable.
- Lift the screen from the right side and use a small screwdriver or other small opening device to flip the black portion of the connector upward to unlock it.
- Carefully slide the data cable out of the connector.
- The LCD should still be connected by the backlight cable.

## Step 10



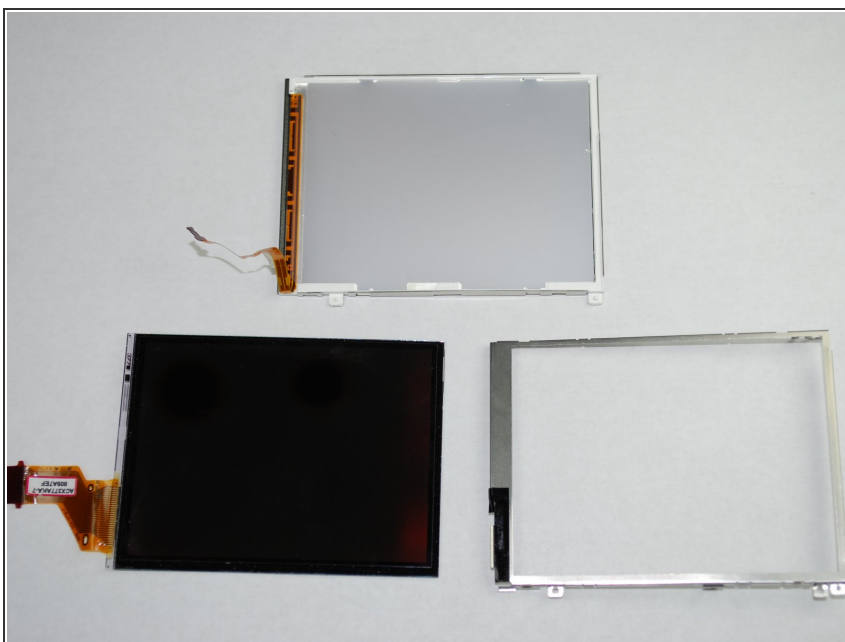
- To remove the backlight cable, use another small opening device to unlock the backlight cable.
- Carefully slide out the backlight cable.
- The LCD screen should now be fully detached from the camera body.

## Step 11



- The LCD screen casing is connected by 4 claws located on the top and bottom on the left and right hand side.
- Carefully disengage the claws by gently prying them off one by one.
  - Once the claws are disengaged, the back of the casing will still be connected to the front casing by the backlight cable.
- Carefully peel the backlight cable off of the casing.

## Step 12



- The LCD screen and housing should now be in three pieces:
  - LCD screen
  - LCD screen frame
  - LCD screen back housing
- The LCD screen itself can now be removed and fixed/replaced.

To reassemble your device, follow these instructions in reverse order.