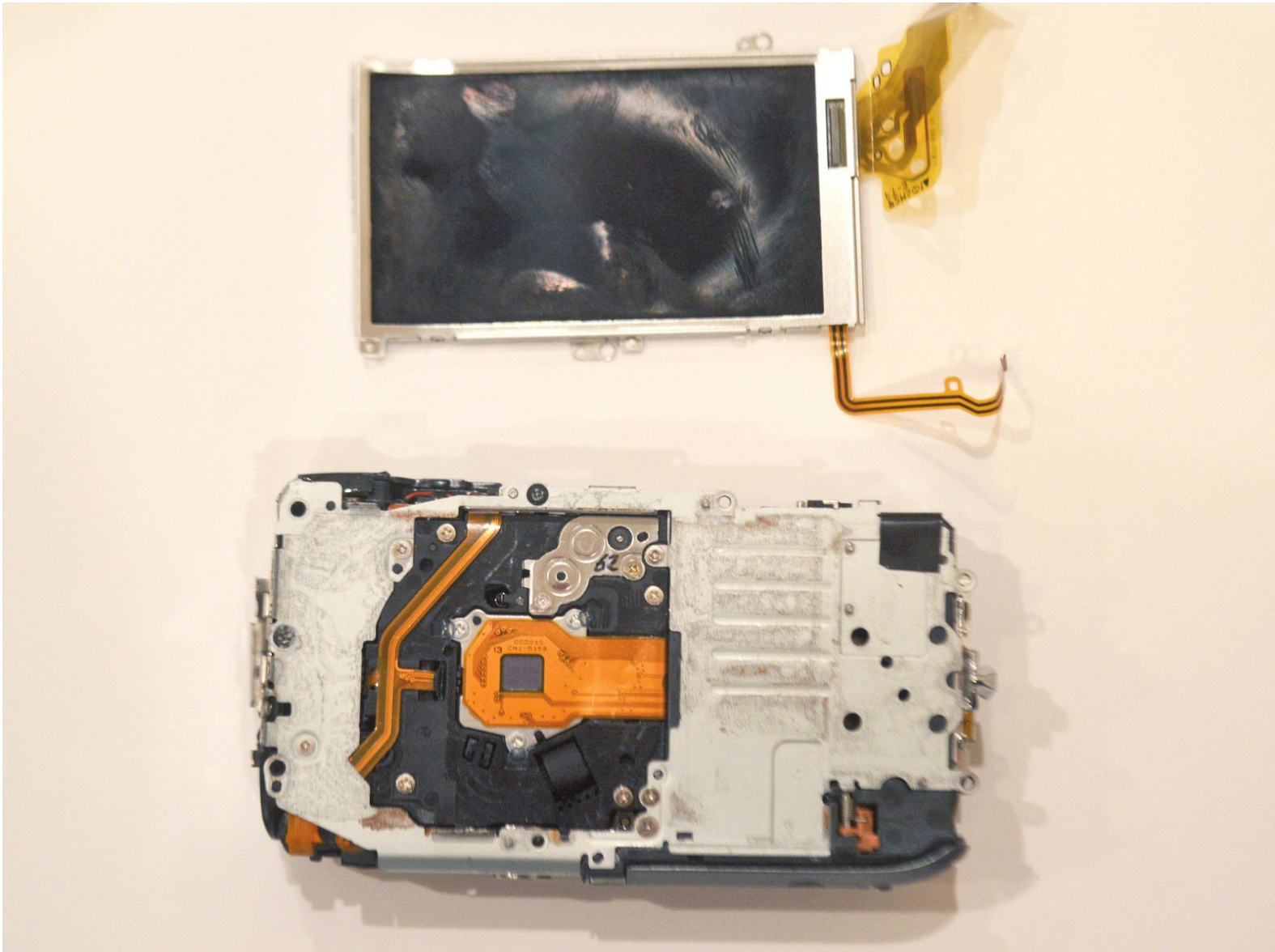




Canon PowerShot SD960 IS Camera Lens Replacement

This guide will teach you how to disassemble your camera and replace a faulty lens.

Written By: D'Anne Gil



INTRODUCTION

If a lens error is not resolved by turning off the camera and then turning it back on, or by removing grit that may be stuck in the lens, this guide will teach you how to remove the lens for replacement.

TOOLS:

- [Spudger](#) (1)
 - [Phillips #000 Screwdriver](#) (1)
 - [Tweezers](#) (1)
-

Step 1 — Battery



- Turn the camera over so that the bottom of the camera is facing up.

Step 2



- Apply slight pressure to the battery door and slide your finger over the release button in the direction of the arrows to open the battery door.
- The battery door will open, allowing you to access the battery.


Step 3



- Push the the orange battery lock back to release the battery.
- Remove the battery.

Step 4 — LCD Screen



 Working on your electronic device while it is powered on can result in electric shock. Power off, unplug,

and remove the battery of your device before continuing.

- Close the battery door, and turn the camera over so that the bottom of the camera is facing up.
- Using a PH000 screwdriver, remove the two 5.5mm screws.

Step 5



- Turn the camera over to the side
- Remove the two 4mm PH000 screws from the side of the camera.

Step 6



- Turn camera over to the data port side with the panel that reads A/V Out.
- Lift open the latch that covers the camera's data ports.
- Remove the one 2.4mm PH000 screw on the left.
- Remove the one 4mm PH000 screw on the right.

Step 7



- Turn the camera over so the lens is facing up.
- Remove the front cover.

Step 8



- Turn the camera over so that the screen is facing up.
- Remove the back cover.

Step 9



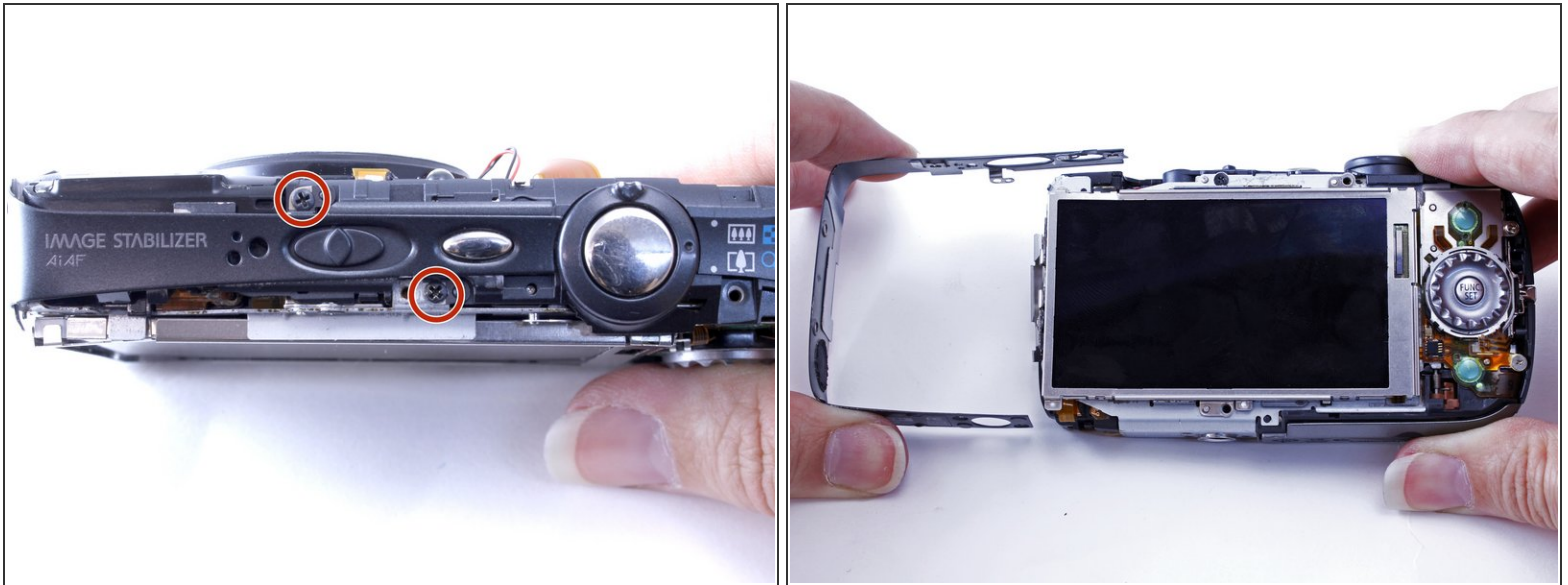
- Turn the camera over so the lens is facing up.
- Remove two 2.4mm PH000 screws from the plate on the front of camera.
- Gently remove the plate.

Step 10



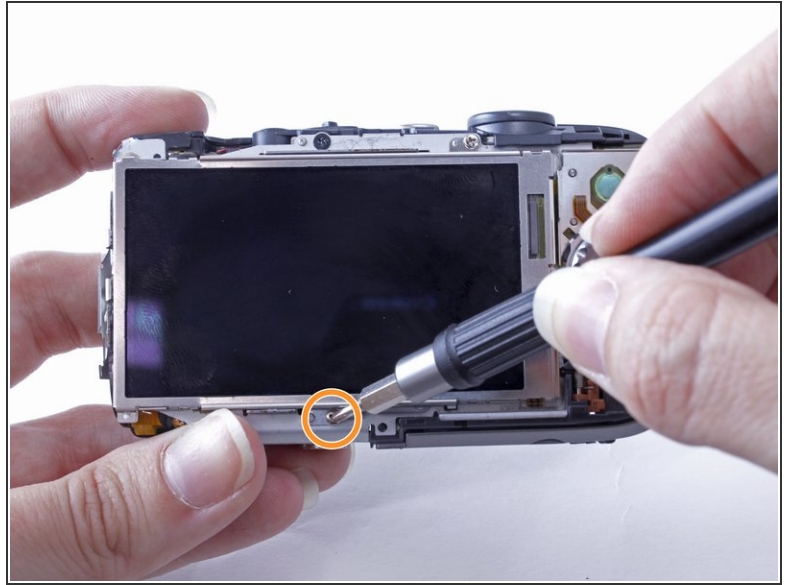
- Turn the camera over to the data port side again.
- After removing the front panel in the previous step, the AV/OUT panel should be free to remove. Gently slide out the A/V panel.

Step 11



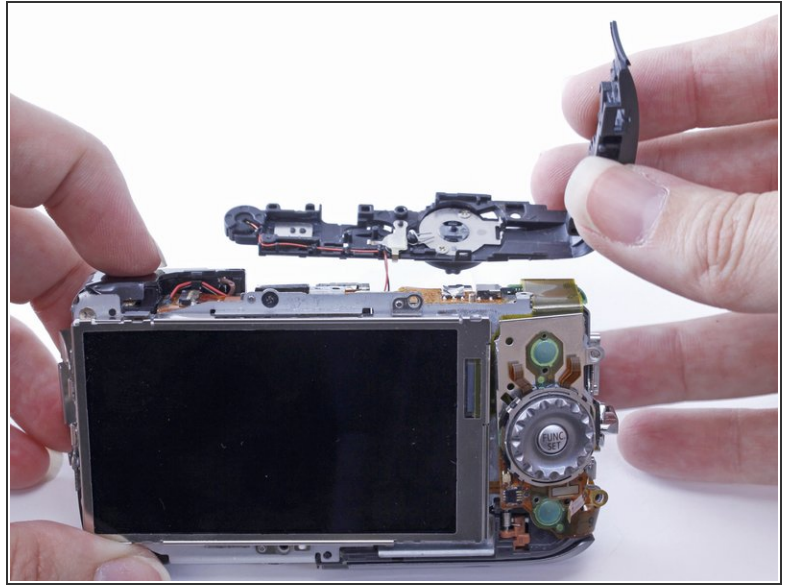
- Turn the camera over so the top panel that reads "Image Stabilizer" is facing up.
- Remove the two 2.4mm PH000 screws from the top of the camera to the left of the power on/off switch.
- Gently remove the panel from the side of the camera.

Step 12



- Turn the camera over so the screen is facing up.
- Remove one 3.2mm PH000 screw from the top of the LCD screen.
- Remove one 3.2mm PH000 screw from the bottom of the LCD screen.

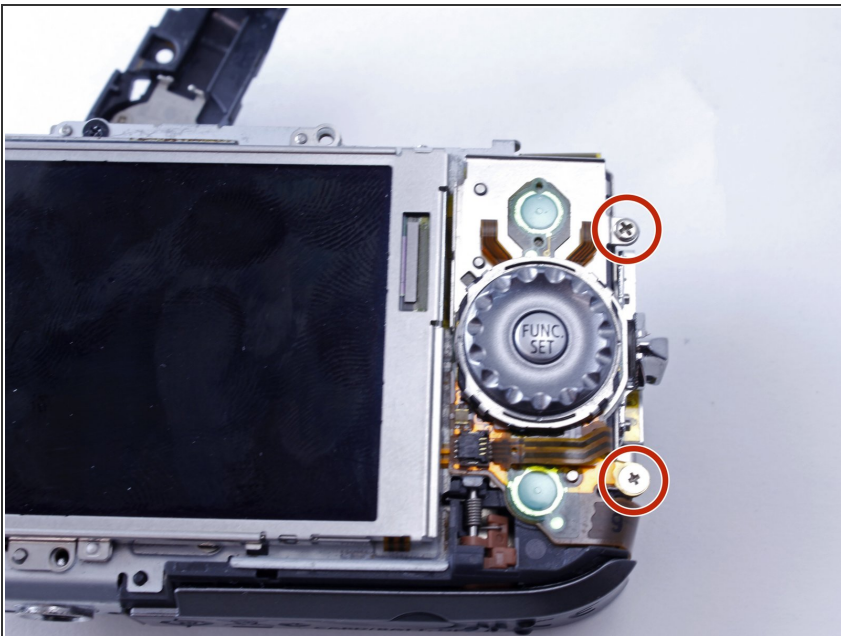
Step 13



i When you remove the top panel it will remain attached by a small orange cable. You can leave the cable attached; it will not obstruct you from completing the following steps.

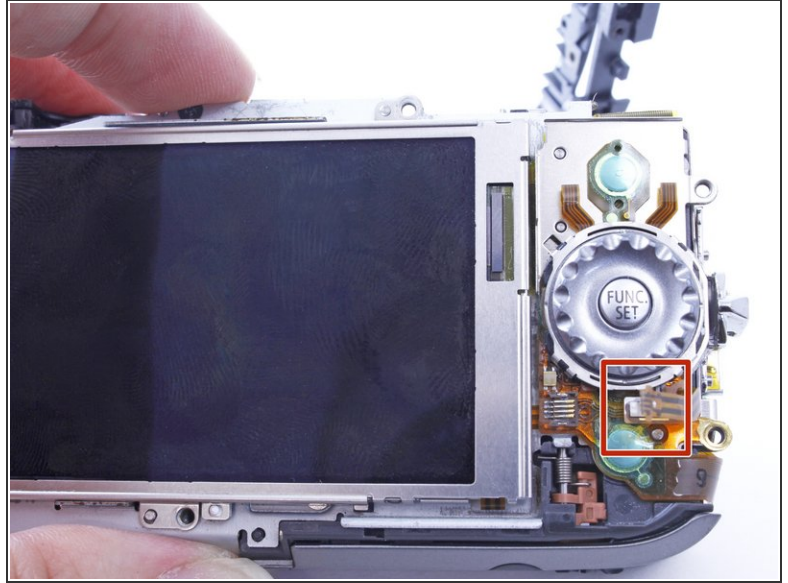
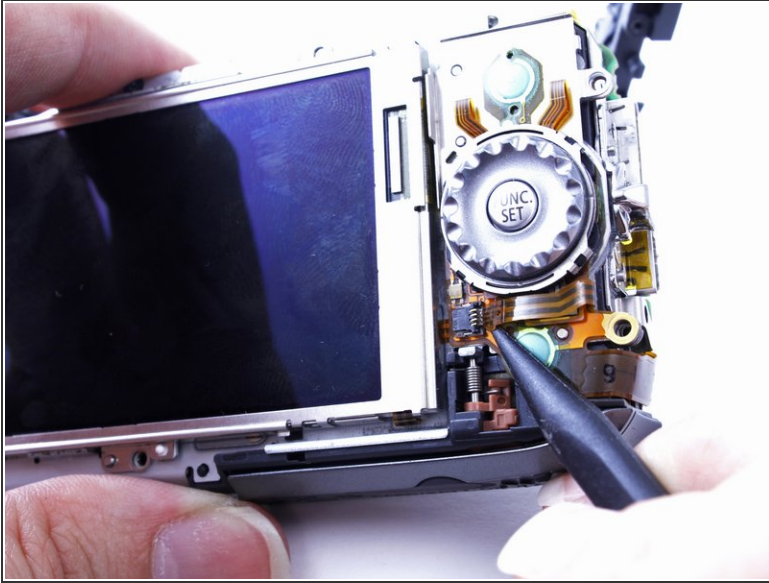
- Gently remove the top panel.

Step 14



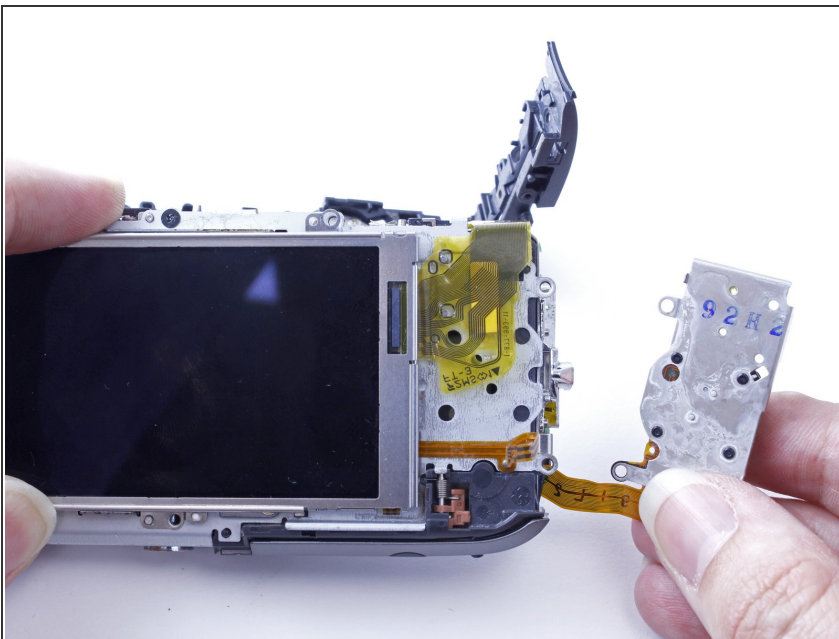
- Remove two 3.2mm PH000 screws on the side of the camera, to the right of the button that reads "Func. Set."

Step 15



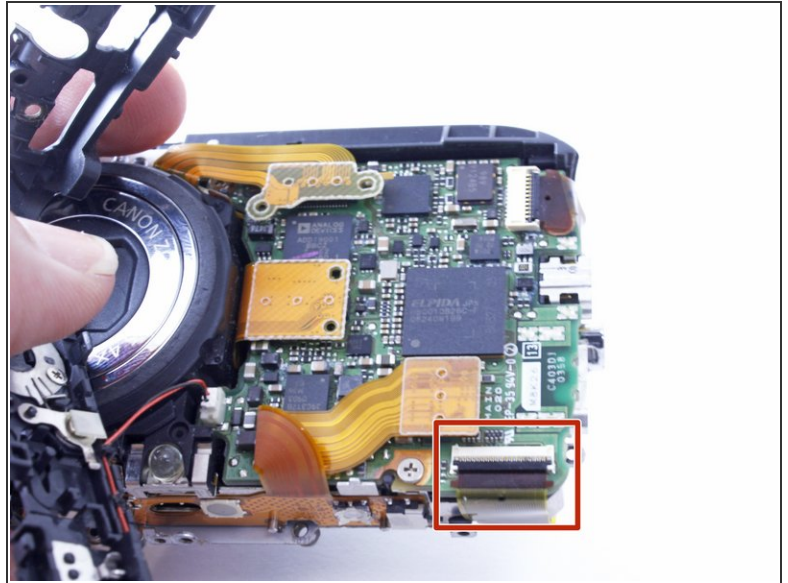
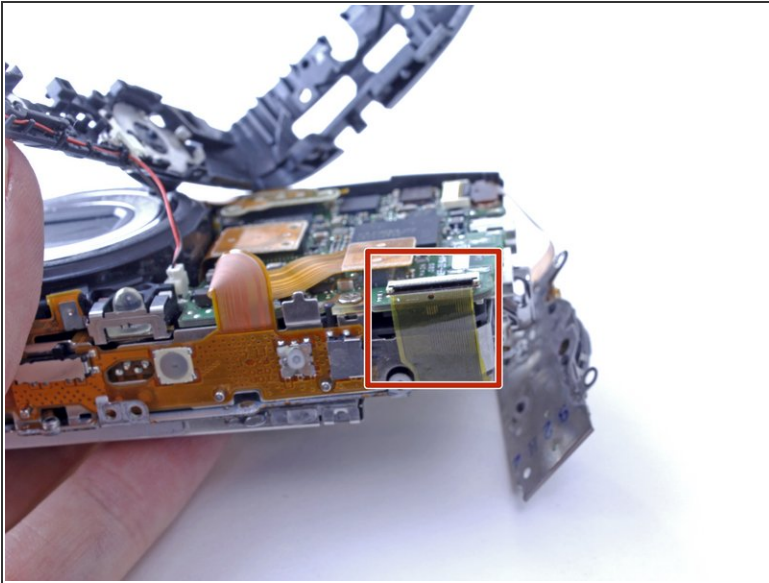
- Use a nylon spudger to flip open the teeth holding the small, orange data cable in place.
- Gently remove the small, orange data cable. The cable should now hang free.

Step 16



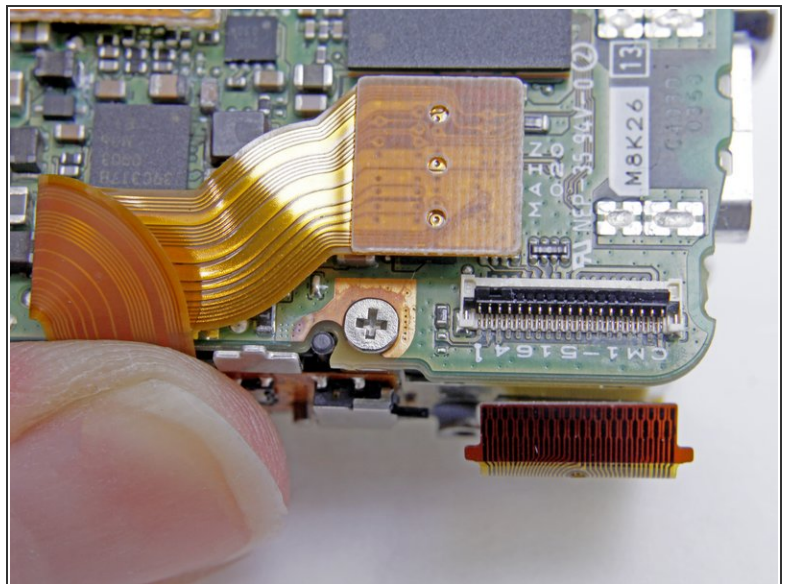
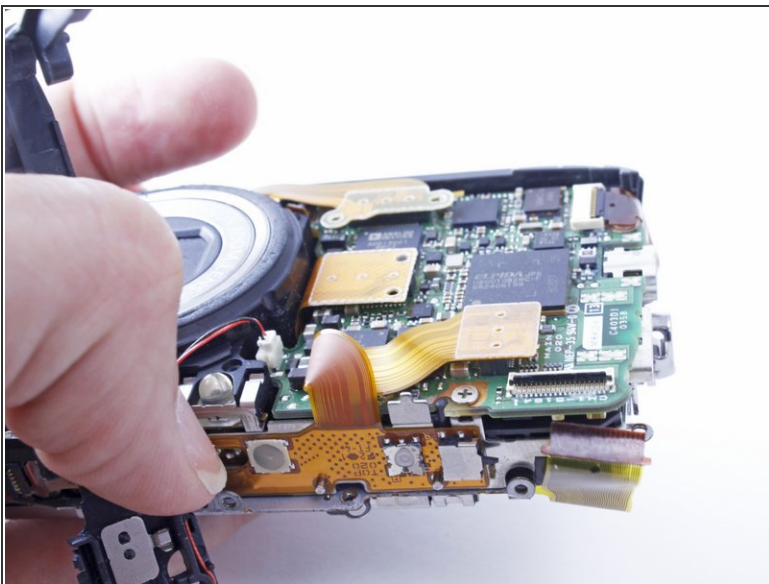
- Once the data cable is removed, the panel to the right of the LCD screen with the button that reads "Func. Set" will be free to remove.
- Gently remove the panel to the right of the LCD screen.

Step 17



- Locate the large, yellow data cable by turning the camera over so the lens is facing up.
- Find where the data cable connects on the front of the camera.

Step 18



- Use a nylon spudger to flip open the teeth that are holding the large, yellow data cable in place.
- Gently remove the data cable.

Step 19



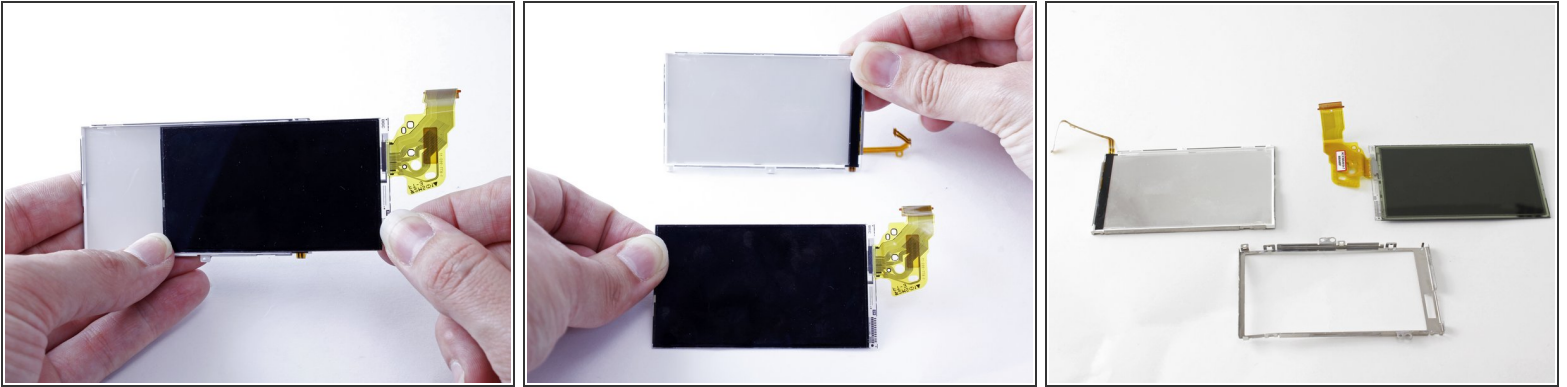
- Turn the camera over so the screen is facing up.
- Remove the LCD screen.

Step 20



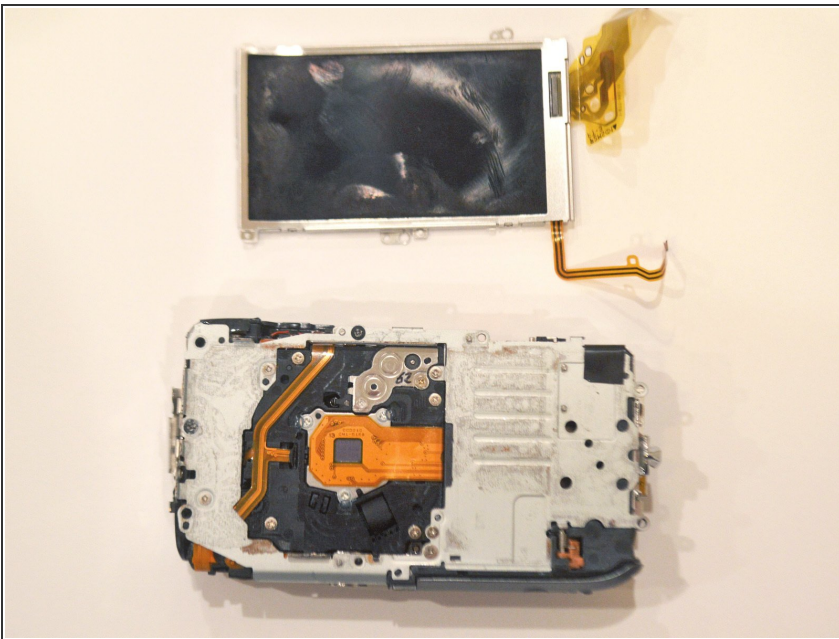
- To remove the casing around the LCD screen, begin by removing the top of the casing (which is in two pieces). First, remove the small hinge on the right side.
- Then, remove the rest of the casing.
- The top of the LCD screen casing should now be removed.

Step 21



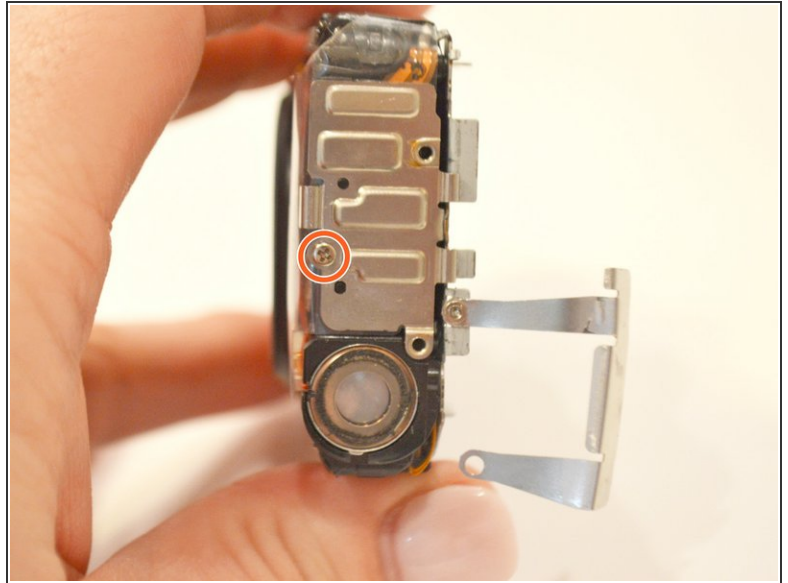
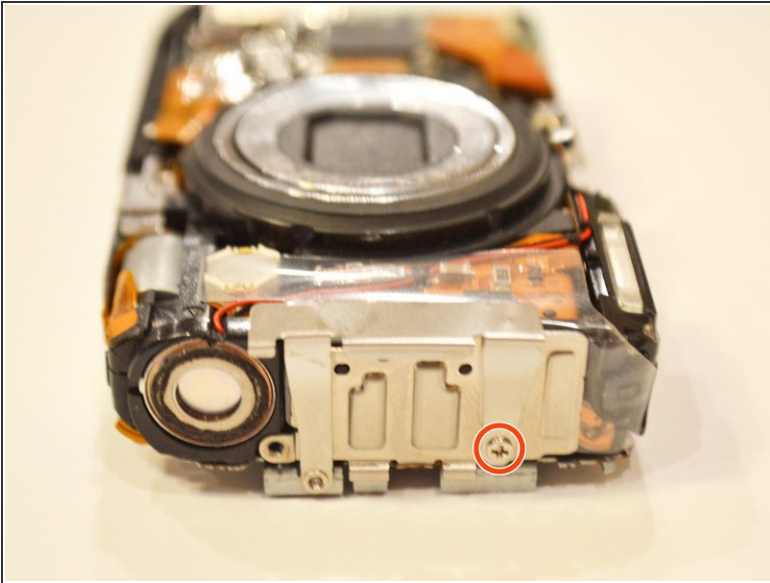
- Carefully slide out the LCD screen from the back part of the casing.
- You should now have three components: The back of the LCD screen casing, the LCD screen, and the front of the LCD screen casing.
- The LCD screen is now removed and can be replaced or set aside to access other camera components.

Step 22 — Camera Lens



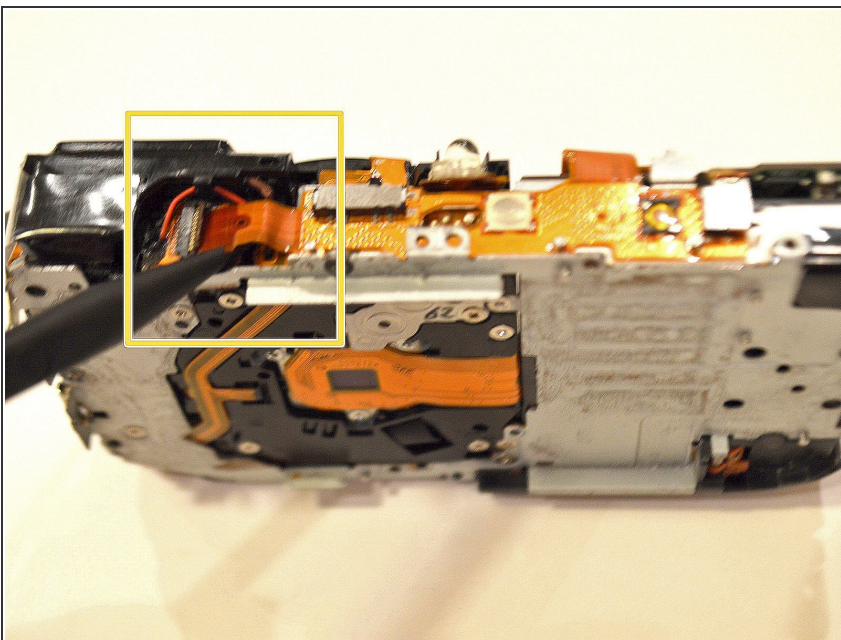
- The LCD screen should now be removed from the body of the camera.

Step 23



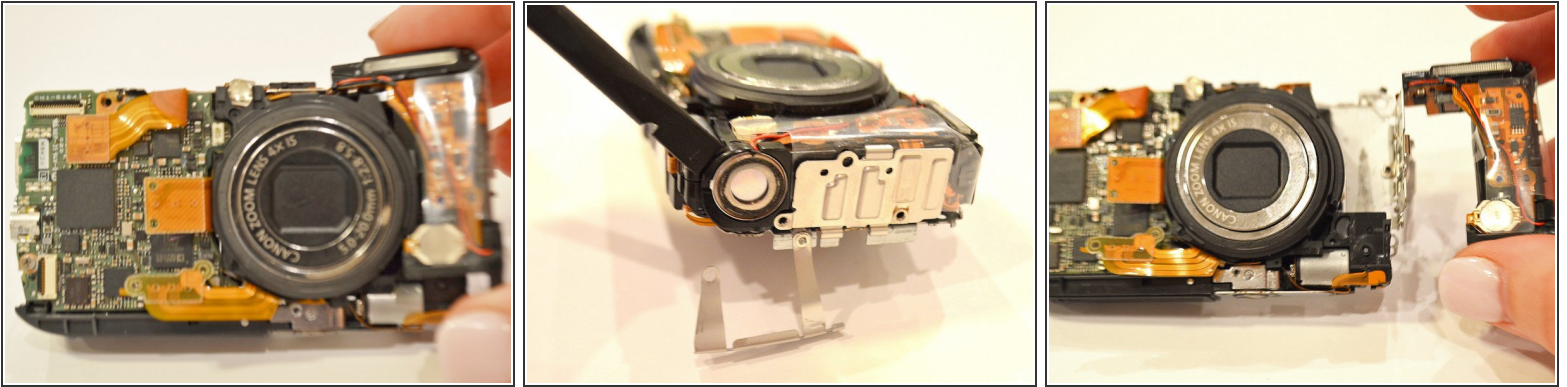
- To remove the flash assembly located on the right side of the camera, remove the 1.8mm screw from the right side of the bracket that is holding the flash assembly in place.
- Swivel the bracket away from the body of the camera, and remove the remaining 1.8mm screw underneath.

Step 24



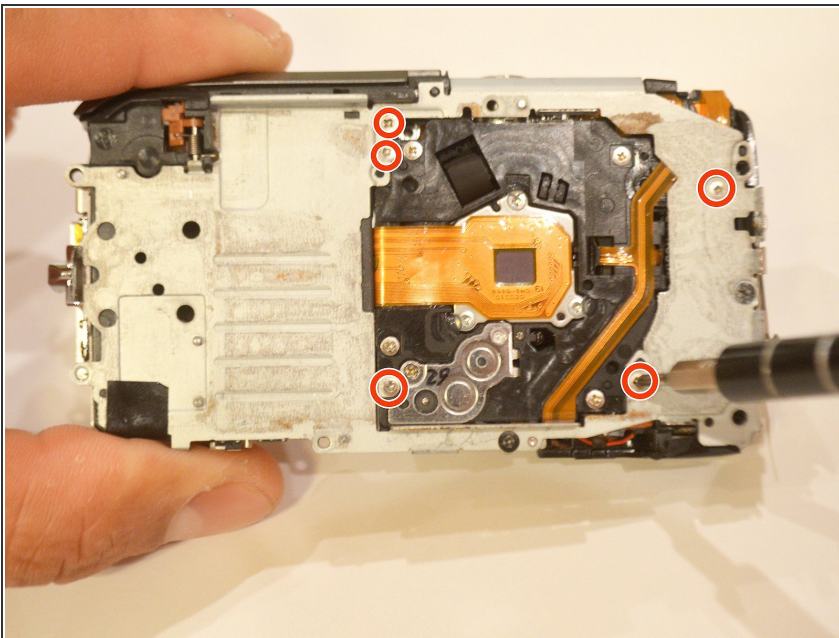
- From the top of the camera, detach the flash assembly ribbon behind the flash bulb using the point of the spudger or small tweezers.

Step 25



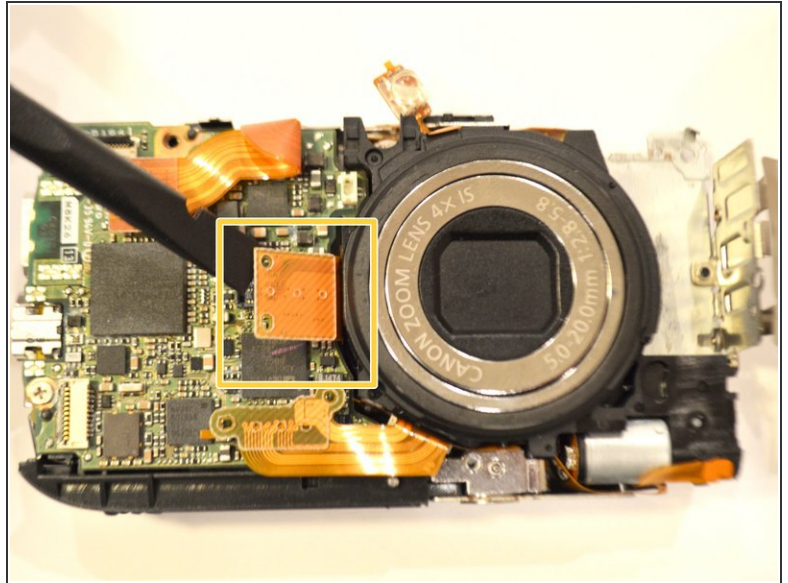
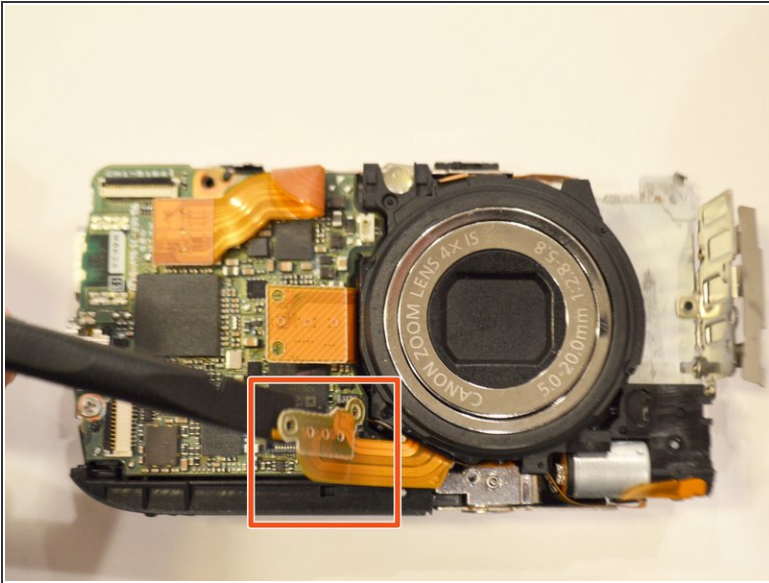
- Using your fingers, remove the flash assembly.
 - ❗ If difficult to remove, use the flat end of the spudger to lift the flash assembly from the bottom.
- The flash assembly should now be free from the camera.

Step 26



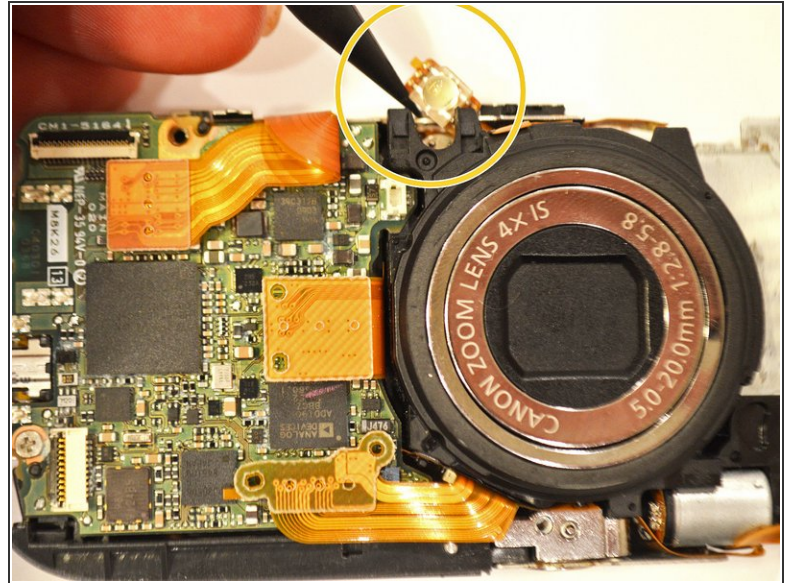
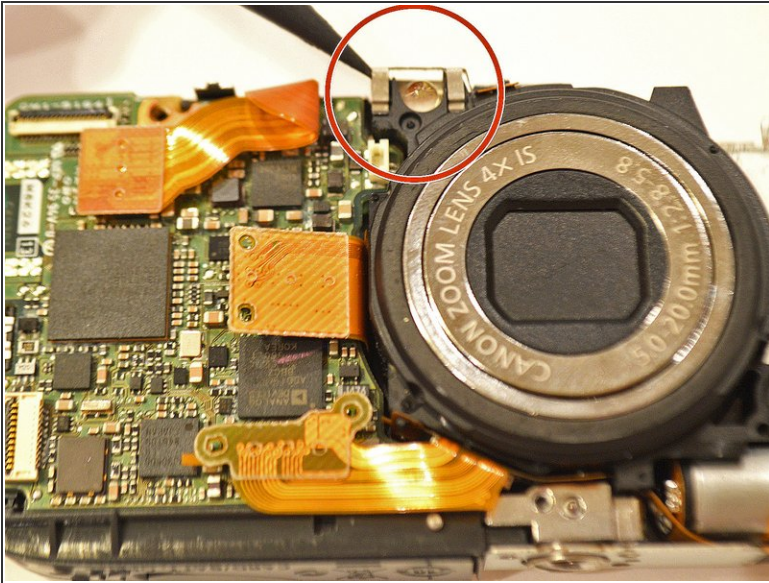
- Using a Philips 000 screwdriver, remove the 5-(2.7mm long) screws from the silver plate that the lens is mounted to on the back (screen side) of the camera.

Step 27



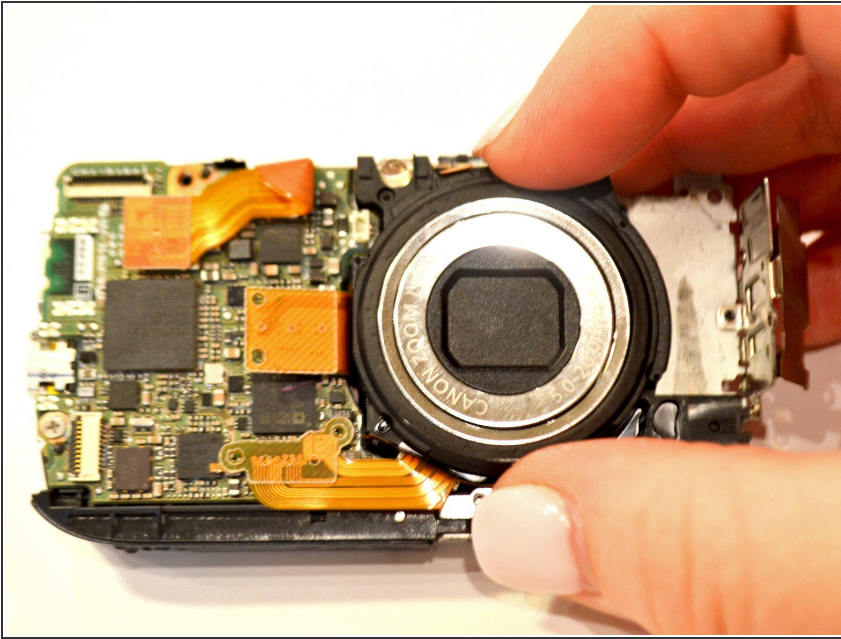
- From the front (lens side) of the camera, gently lift the first lens ribbon at the bottom of the circuit board using the spudger.
- Gently lift the second lens ribbon in the center of the circuit board using the spudger.

Step 28



- Using the point of the spudger, carefully lift the bracket off of the LED light on the upper-left corner of the lens.
- ⚠ The bracket is spring loaded and will bounce off.
- Lift the LED light gently away from the camera.
- ⓘ It will remain attached to the circuit board.

Step 29



- The lens should now be free to remove.
- Gripping the lens with your fingers, remove the lens from the front (lens side) of the camera.

To reassemble your device, follow these instructions in reverse order.