



# Canon PowerShot SX120 IS Screen Replacement

Use this guide to replace the back screen on a Canon PowerShot SX120 IS.

Written By: Romelia



---

## INTRODUCTION

This guide will take you through the process of replacing a broken screen on a Canon PowerShot SX120 IS.

---

### TOOLS:

- [iFixit Opening Tools](#) (1)
  - [Tweezers](#) (1)
  - [Phillips #000 Screwdriver](#) (1)
-

## Step 1 — Back Cover



- ❗ Remove the double AA batteries before starting to disassemble. This will prevent you from permanently damaging your camera.
- Turn the camera to the side that has the screen.
- Unscrew the two black 3.4 mm screws with a #00 Phillips screwdriver.

## Step 2



- Put the camera with the lens facing up, turn it to the side where the DC IN A/V OUT DIGITAL Cover and lanyard attachment are located.
- Unscrew the black 3.4 mm screws with a #00 Phillips screwdriver.

### Step 3



- Put the camera with the lens facing up, turn it to the side where the Cover battery is located.
- Unscrew the black 3.4 mm screws with a #00 Phillips screwdriver.

### Step 4



- Put the camera with the lens facing up, turn it to the side where the compartment of the battery (CR1220) for time/date is located.
- Unscrew the black 3.4 mm screws with a #00 Phillips screwdriver.



## Step 5



- Put the camera with the lens facing down, turn it to the side where the DC IN A/V OUT DIGITAL Cover and the silver lanyard attachment are located.
- Open the DC IN A/V OUT DIGITAL cover.
- Unscrew the black 3.4 mm screws with a #00 Phillips screwdriver.

## Step 6



- Turn the camera with the lens facing down.
- i** Opening the camera can be challenging. Don't get discouraged if it takes you a few tries before the camera is opened.
- Use the blue opening tool to make lever. Insert the opening tool in the seam where the front case and the back case assemble.
- !** Carefully make pressure downwards on the opening tool so the cover can gradually open.
- Keep making pressure and slowly slide the opening tool through all the gap.
- There is one point when the cover will disassemble completely.
- i** When you are disassembling the back cover, the DC IN A/V OUT DIGITAL cover will also disassemble and fall off.

## Step 7



- This is a final picture of how it's going to look when you disassemble the back cover.
- You will have 3 parts:
  - 1. The camera
  - 2. The DC IN A/V OUT DIGITAL Cover
  - 3. The back cover.

## Step 8 — Screen

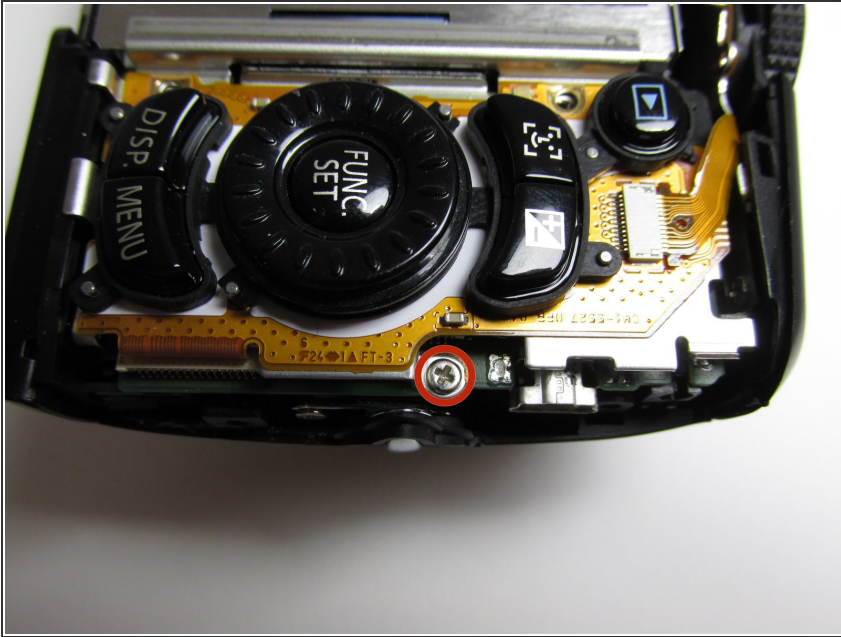


- Remove the two screws that are attached directly below the screen with a #000 philips screw driver.

These screws secure the screen to the main frame of the camera.

- Remove the two 3.4 mm screws

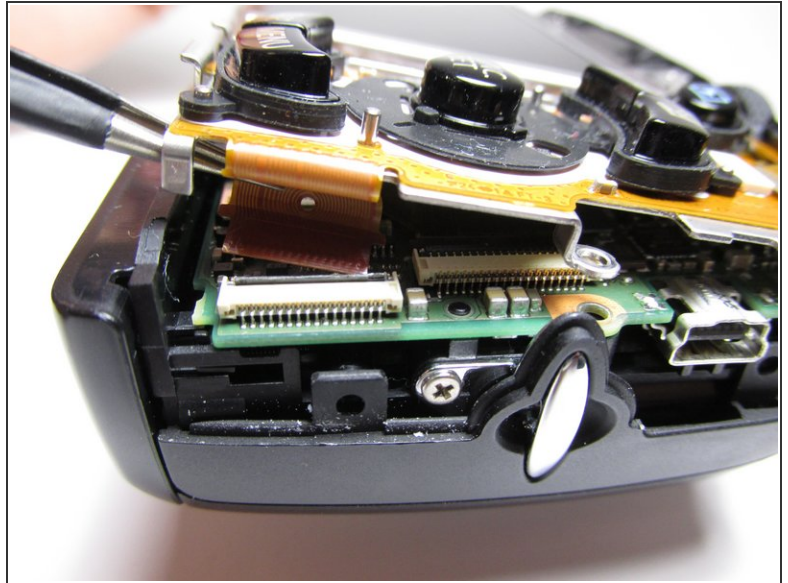
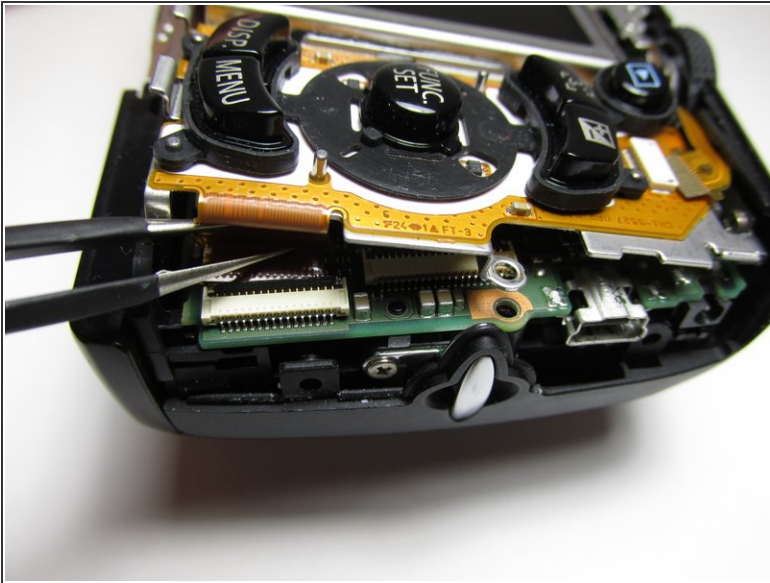
## Step 9



- Place the camera with the lens facing down. Find the screw that is located on the right side of the camera next to the function set button.
- Remove the 3.4mm screw with a #000 Phillips screwdriver.



## Step 10



- Leave the camera facing down and locate the ribbon connector. The ribbon connector is placed below the main button panel on the bottom right side of the camera.
- Lift the main button panel and gently hold the ribbon connector with the black tweezers.
- ⚠ While lifting and removing the ribbon connector with the tweezers make sure to not break the ribbon or the connection located on the bottom end of the ribbon. Remove the lower portion of the ribbon by using a spudger. You will be needing the ribbon connection to reassemble your device.
- Once the ribbon has been entirely disconnected, lift the entire panel and place it above its original positions. The panel will not be entirely removed only the lower half.

## Step 11



- Place the camera with the lens facing down.
- Use the black tweezers to gently begin to lift the screen. Begin lifting the screen from the left side.
- Locate the ribbon connector that is attached to the screen and also the motherboard.
- Remove the ribbon from the motherboard connection by flipping up the small black clamp on the connector with a spudger.

To reassemble your device, follow these instructions in reverse order.