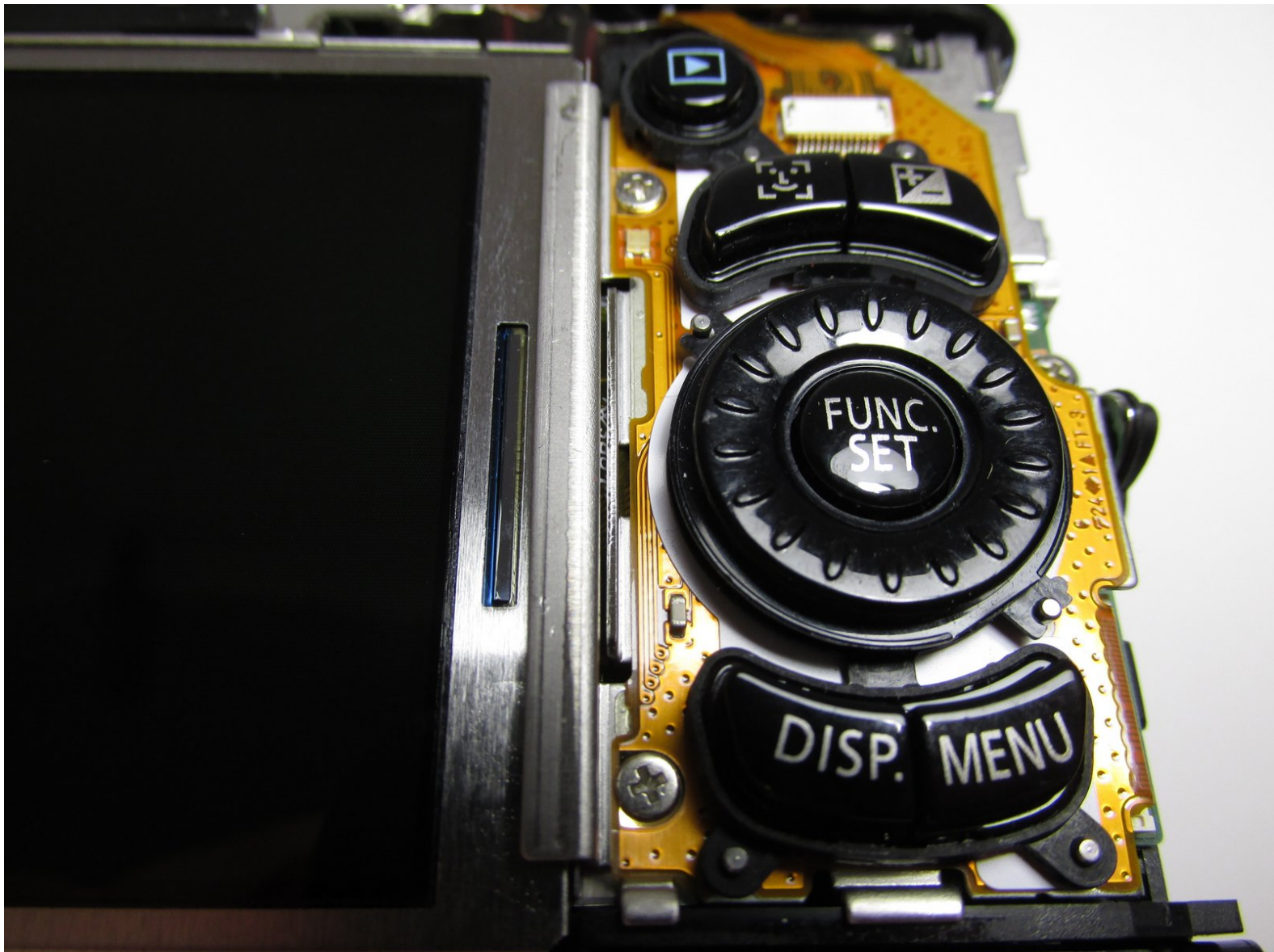




Canon PowerShot SX120 IS Control Dial Replacement

Use this repair guide to repair the Control Dial of a Canon PowerShot SX120 IS.

Written By: Destiny Bretado





TOOLS:

- [Phillips #00 Screwdriver](#) (1)
 - [iFixit Opening Tools](#) (1)
-

Step 1 — Back Cover



- ❗ Remove the double AA batteries before starting to disassemble. This will prevent you from permanently damaging your camera.
- Turn the camera to the side that has the screen.
- Unscrew the two black 3.4 mm screws with a #00 Phillips screwdriver.

Step 2



- Put the camera with the lens facing up, turn it to the side where the DC IN A/V OUT DIGITAL Cover and lanyard attachment are located.
- Unscrew the black 3.4 mm screws with a #00 Phillips screwdriver.

Step 3



- Put the camera with the lens facing up, turn it to the side where the Cover battery is located.
- Unscrew the black 3.4 mm screws with a #00 Phillips screwdriver.

Step 4



- Put the camera with the lens facing up, turn it to the side where the compartment of the battery (CR1220) for time/date is located.
- Unscrew the black 3.4 mm screws with a #00 Phillips screwdriver.

Step 5



- Put the camera with the lens facing down, turn it to the side where the DC IN A/V OUT DIGITAL Cover and the silver lanyard attachment are located.
- Open the DC IN A/V OUT DIGITAL cover.
- Unscrew the black 3.4 mm screws with a #00 Phillips screwdriver.

Step 6



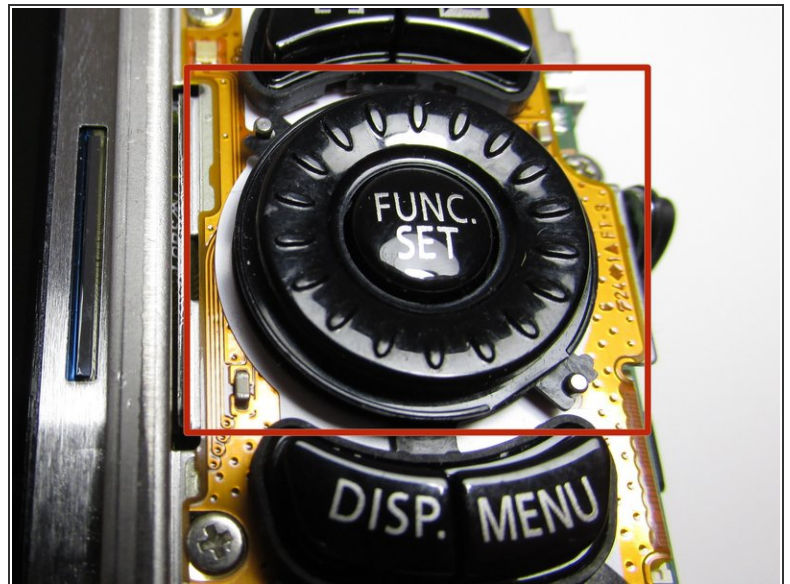
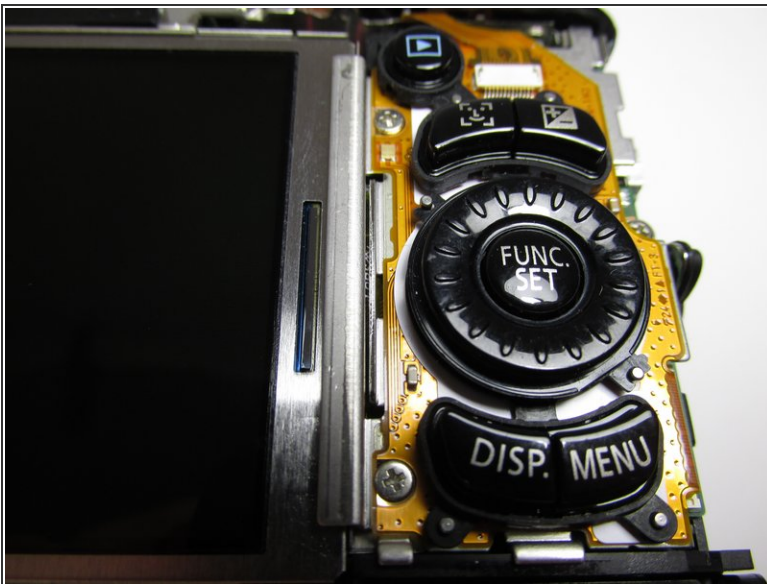
- Turn the camera with the lens facing down.
- i** Opening the camera can be challenging. Don't get discouraged if it takes you a few tries before the camera is opened.
- Use the blue opening tool to make lever. Insert the opening tool in the seam where the front case and the back case assemble.
- !** Carefully make pressure downwards on the opening tool so the cover can gradually open.
- Keep making pressure and slowly slide the opening tool through all the gap.
- There is one point when the cover will disassemble completely.
- i** When you are disassembling the back cover, the DC IN A/V OUT DIGITAL cover will also disassemble and fall off.

Step 7



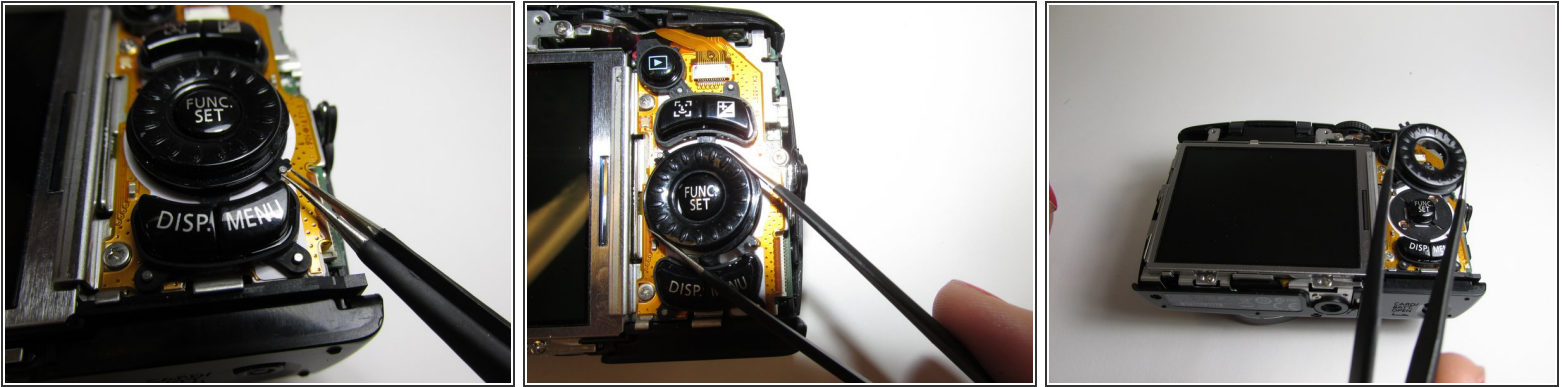
- This is a final picture of how it's going to look when you disassemble the back cover.
- You will have 3 parts:
 - 1. The camera
 - 2. The DC IN A/V OUT DIGITAL Cover
 - 3. The back cover.

Step 8 — Control Dial



- Once you have removed the back cover this is what the camera will look like.
- Locate the Control Dial.

Step 9



- Once the Control Dial is located carefully remove it using tweezers.

To reassemble your device, follow these instructions in reverse order.