



Canon PowerShot SX120 IS Function Buttons Replacement

This guide will aid you in removing one or all of the function buttons surrounding the control dial.

Written By: Brea Baca



INTRODUCTION

First remove the back casing and control dial before attempting to remove buttons.



TOOLS:

- [Phillips #00 Screwdriver](#) (1)
 - [iFixit Opening Tools](#) (1)
 - [Tweezers](#) (1)
-

Step 1 — Back Cover



- ❗ Remove the double AA batteries before starting to disassemble. This will prevent you from permanently damaging your camera.
- Turn the camera to the side that has the screen.
- Unscrew the two black 3.4 mm screws with a #00 Phillips screwdriver.

Step 2



- Put the camera with the lens facing up, turn it to the side where the DC IN A/V OUT DIGITAL Cover and lanyard attachment are located.
- Unscrew the black 3.4 mm screws with a #00 Phillips screwdriver.

Step 3



- Put the camera with the lens facing up, turn it to the side where the Cover battery is located.
- Unscrew the black 3.4 mm screws with a #00 Phillips screwdriver.

Step 4



- Put the camera with the lens facing up, turn it to the side where the compartment of the battery (CR1220) for time/date is located.
- Unscrew the black 3.4 mm screws with a #00 Phillips screwdriver.

Step 5



- Put the camera with the lens facing down, turn it to the side where the DC IN A/V OUT DIGITAL Cover and the silver lanyard attachment are located.
- Open the DC IN A/V OUT DIGITAL cover.
- Unscrew the black 3.4 mm screws with a #00 Phillips screwdriver.

Step 6



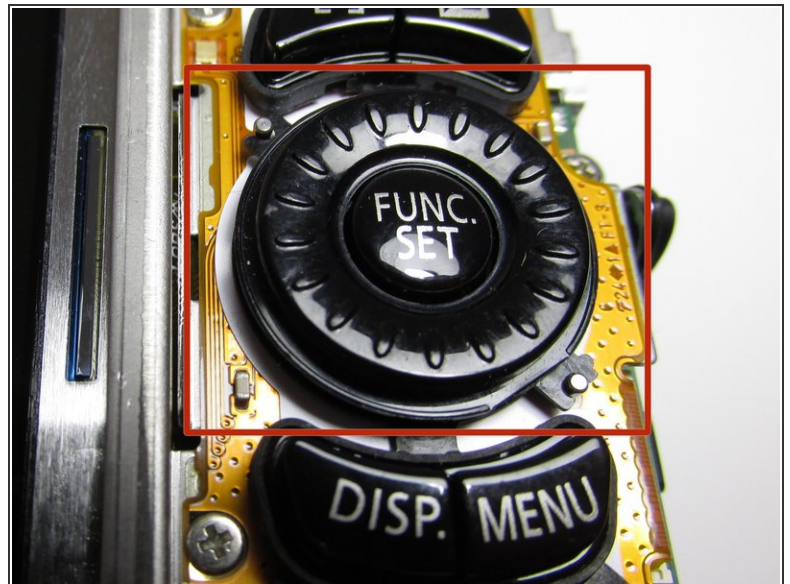
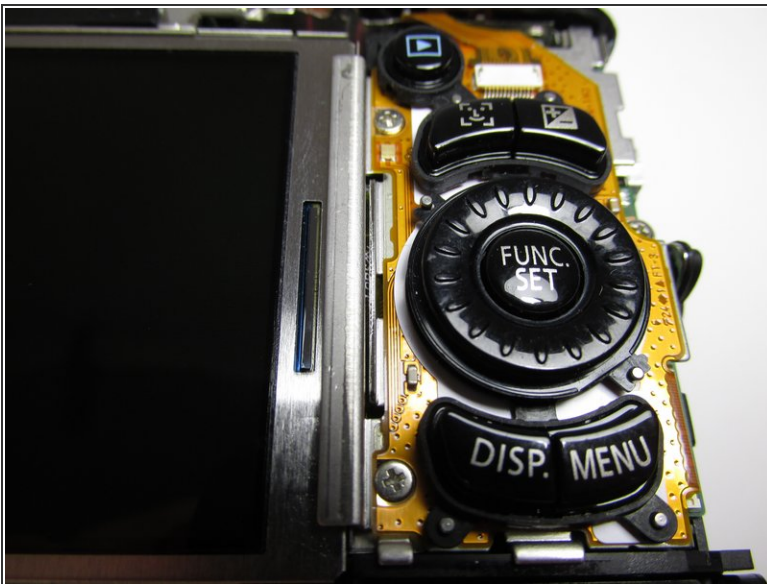
- Turn the camera with the lens facing down.
- i** Opening the camera can be challenging. Don't get discouraged if it takes you a few tries before the camera is opened.
- Use the blue opening tool to make lever. Insert the opening tool in the seam where the front case and the back case assemble.
- !** Carefully make pressure downwards on the opening tool so the cover can gradually open.
- Keep making pressure and slowly slide the opening tool through all the gap.
- There is one point when the cover will disassemble completely.
- i** When you are disassembling the back cover, the DC IN A/V OUT DIGITAL cover will also disassemble and fall off.

Step 7



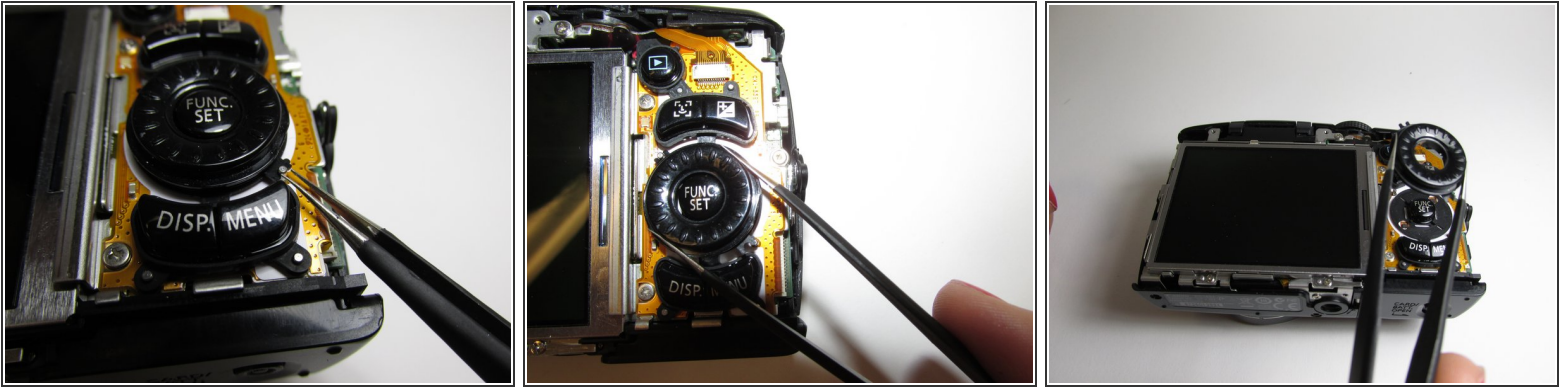
- This is a final picture of how it's going to look when you disassemble the back cover.
- You will have 3 parts:
 - 1. The camera
 - 2. The DC IN A/V OUT DIGITAL Cover
 - 3. The back cover.

Step 8 — Control Dial



- Once you have removed the back cover this is what the camera will look like.
- Locate the Control Dial.

Step 9



- Once the Control Dial is located carefully remove it using tweezers.

Step 10 — Function/Display/Menu Buttons



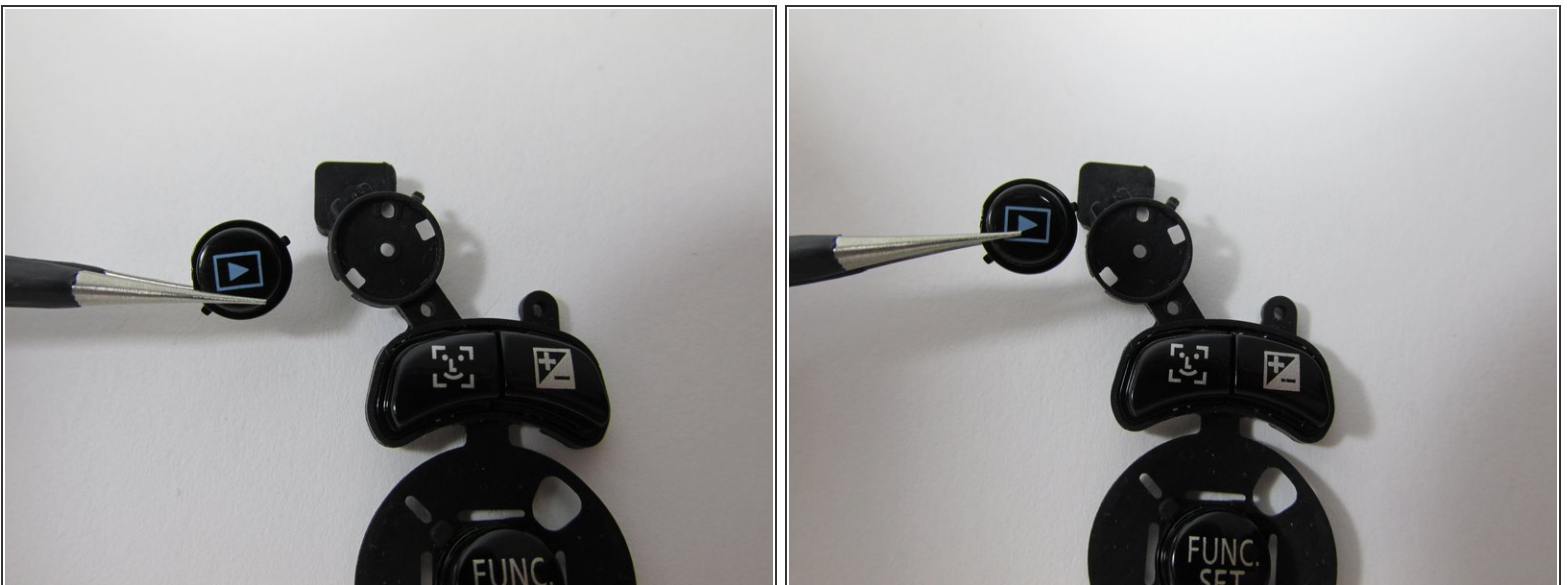
- Once casing and control dial have been removed, you will begin removing silicone button pad.
- Use tweezers to grip the edge of the silicone pad and begin lifting upward.

Step 11



- Continue lifting until pad is separated completely from the camera.

Step 12



- Once pad is separated from camera, use tweezers to grip button(s) that need to be removed, and lift until it has been separated completely from the pad.

To reassemble your device, follow these instructions in reverse order.