



Canon PowerShot SX150 IS Lens Replacement

How to replace the Canon PowerShot SX150 IS lens if it is broken.

Written By: Madison King





TOOLS:

- [Tweezers](#) (1)
 - [JIS Driver Set](#) (1)
-

Step 1 — Canon PowerShot SX150 IS Battery Removal



- Locate the battery cover on the bottom of the camera.
- Slide the battery compartment cover the direction the arrow is pointing to open the compartment.
- Remove batteries.

Step 2 — Canon PowerShot SX150 IS Prerequisite



- Remove the two 2mm screws above the screen using the size J000 screwdriver.

Step 3



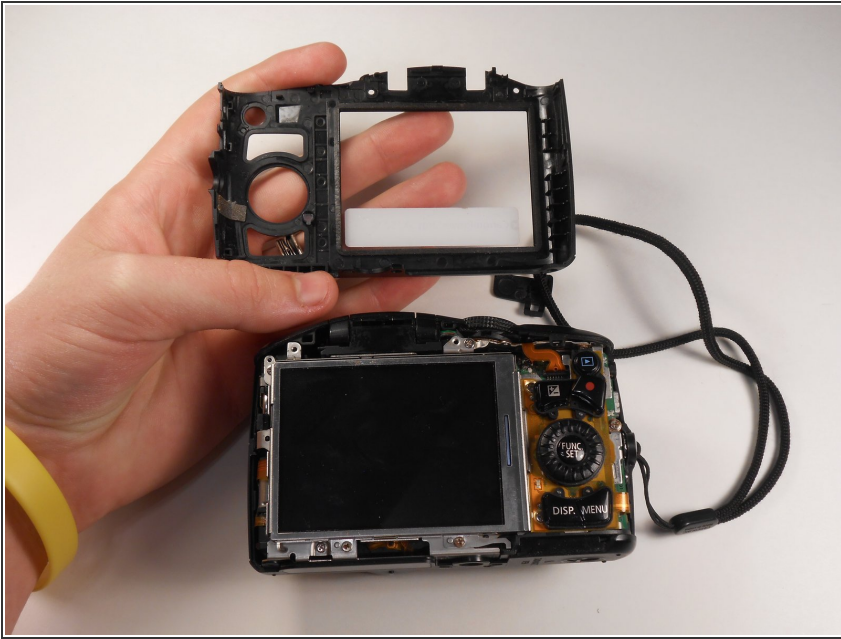
- Remove the two 5mm screws from the side of the camera with the J000 head screw driver.
- Using the same screwdriver, remove the one 5mm screw from the other side of the camera located under the A/V Out flap.

Step 4



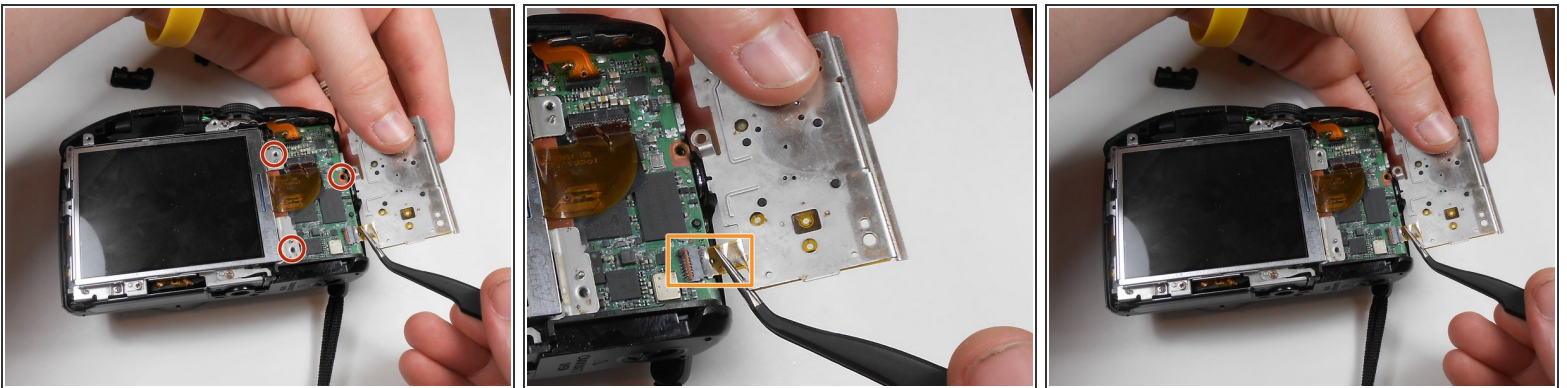
- Remove two 4mm screws from the bottom of the camera with the J000 head screw driver.

Step 5



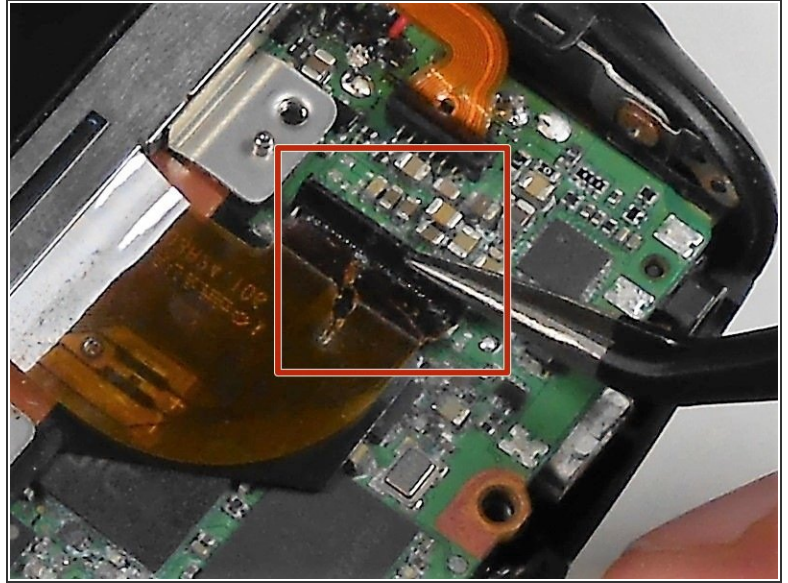
- Remove the plastic panel surrounding the back screen.


Step 6



- Remove the three 3mm screws using the size J000 screw driver from the button plate.
- Gently flip up the flex ribbon lock and remove the flex ribbon using tweezers.
- Move the button plate out of the way.

Step 7



 There is a black flex ribbon lock that must be lifted and unlocked with your tweezers before this flex ribbon will detach.

 Any small tear could ruin the flex ribbon. Be very gentle while removing it.

- Gently lift the lock and detach the flex ribbon from the circuit board with the tweezers.

Step 8



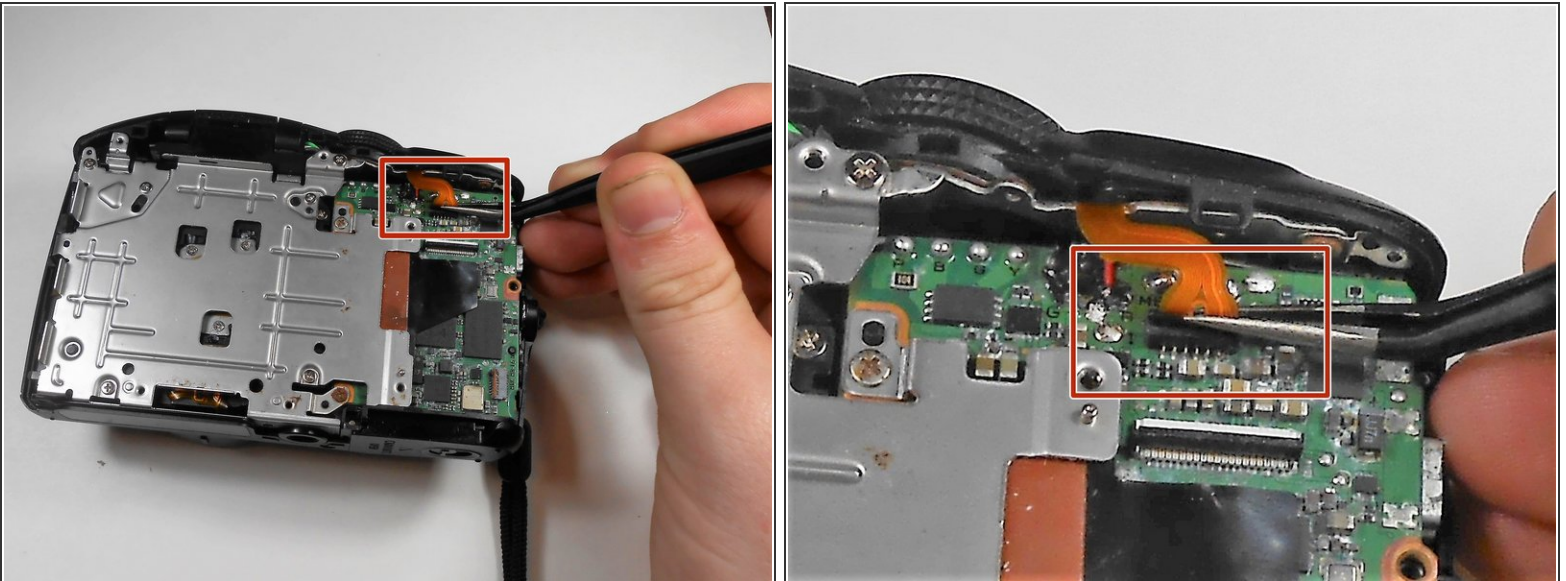
- Remove the two 2mm screws from the bottom of the screen with the size J000 screw driver.
- You can then lift the screen out of place and set it aside.

Step 9



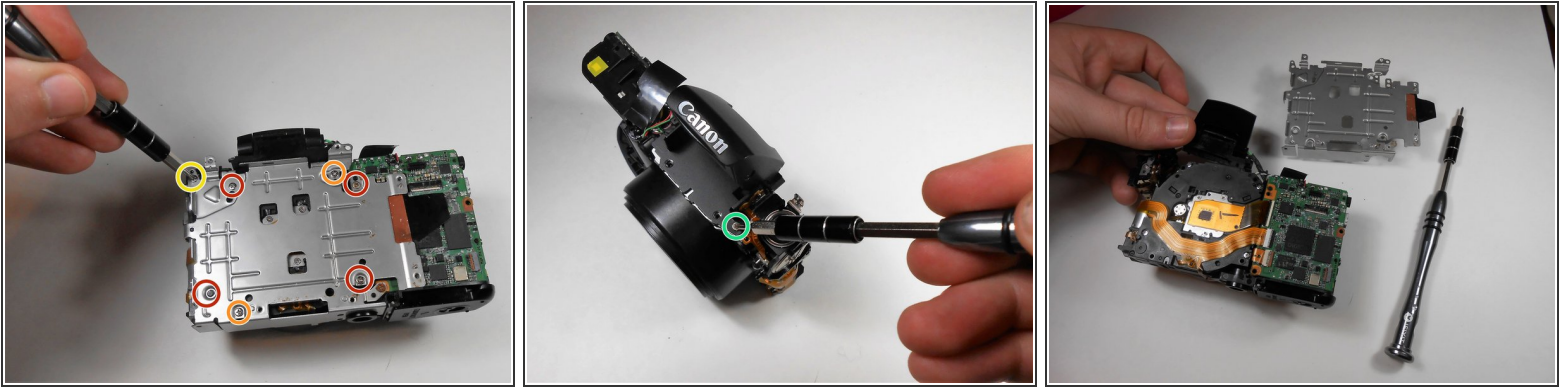
- With the J000 Philips head screwdriver, remove the two 2mm screws from under the flash.
- Using the same screwdriver, remove the two 5mm screws from the bottom. One is under the battery door.
- With the same screwdriver, remove the 2mm screw at the top of the metal plate.

Step 10



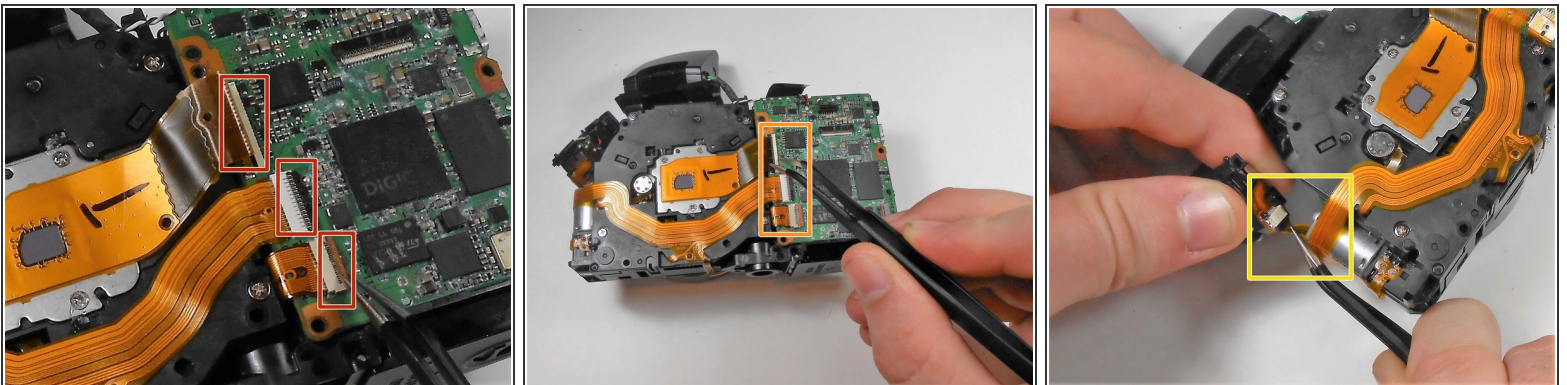
- Gently detach the flex ribbon with your tweezers before removing the front plate.

Step 11



- Using the J000 Philips head screwdriver, remove the four 7mm screws from the silver panel.
- Remove the two 5mm screws.
- Remove the one 3 mm screw.
- Using the same screwdriver, remove the 3mm screw from the top of the camera.
- Pull the panel off and set it aside.

Step 12 — Lens



- First, very carefully open the latch on each of the three flex ribbons (two black, one brown).
- With tweezers, very carefully detach all three flex ribbons from their ports.
- Carefully detach the flex ribbon from the side.

Step 13



- The lens is now fully detached and can be replaced.

To reassemble your device, follow these instructions in reverse order.