



Canon PowerShot SX160 IS Format Wheel Replacement

This guide describes how to replace a non functioning format wheel.

Written By: Jamie Secretan



INTRODUCTION

This guide walks you through how to replace a format wheel on your Canon PowerShot SX160 IS by disassembling a portion of the camera to access the non operational piece.

TOOLS:

- [Phillips #0 Screwdriver](#) (1)
-

Step 1 — Format Wheel



- Use a #0 phillips screwdriver to unscrew the two black 4.8mm phillips head screws from the back of the camera.

 The screws are located directly above the LCD screen.

Step 2



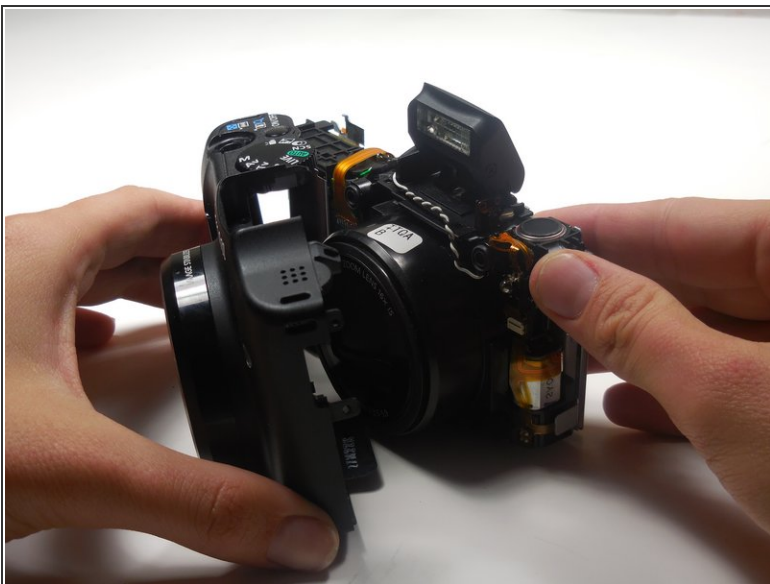
- Use a #0 phillips screwdriver to unscrew the two black 4.8mm phillips head screws from the side of the camera.
- Use a #0 phillips screwdriver to unscrew the two black 4.8mm phillips head screws from the bottom of the camera.

Step 3



- Use your hands to gently separate the back plate from the camera.
- Slowly pull off the camera plate until it fully detaches from the camera.

Step 4



- Use your hands to gently separate the front plate from the camera.
- Slowly pull off the camera plate until it fully detaches from the camera.

Step 5



- Locate and replace the format wheel on the front panel of the camera.

Congratulations, you have successfully replaced your format wheel. To reassemble your device, follow these instructions in reverse order.