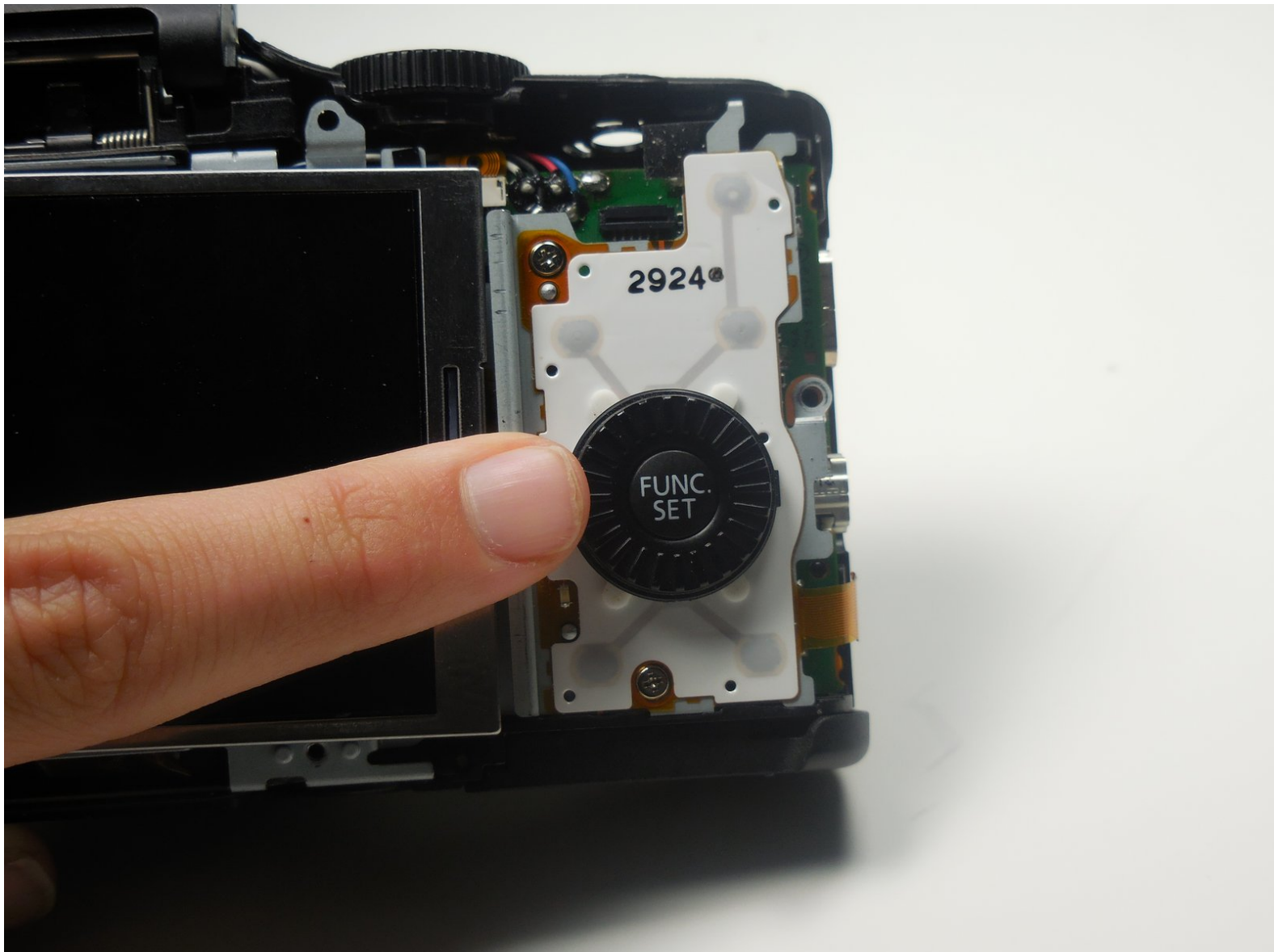




Canon PowerShot SX160 IS Function Wheel Replacement

This guide describes how to replace a non operational function wheel.

Written By: Jamie Secretan



INTRODUCTION

This guide provides a breakdown that shows how to replace the function wheel on your Canon PowerShot SX160 IS by disassembling a portion of the camera to access the function wheel.



TOOLS:

- [Phillips #0 Screwdriver](#) (1)
-

Step 1 — Function Wheel



- Unscrew the 2-4.8mm black Phillips head screws from the front of the camera using a #0 Phillips screwdriver.
- Unscrew the 2-4.8mm black Phillips head screws from the side of the camera using a #0 Phillips screwdriver.
- Unscrew the 3-4.8mm black Phillips head screws from the bottom of the camera using a #0 Phillips screwdriver.

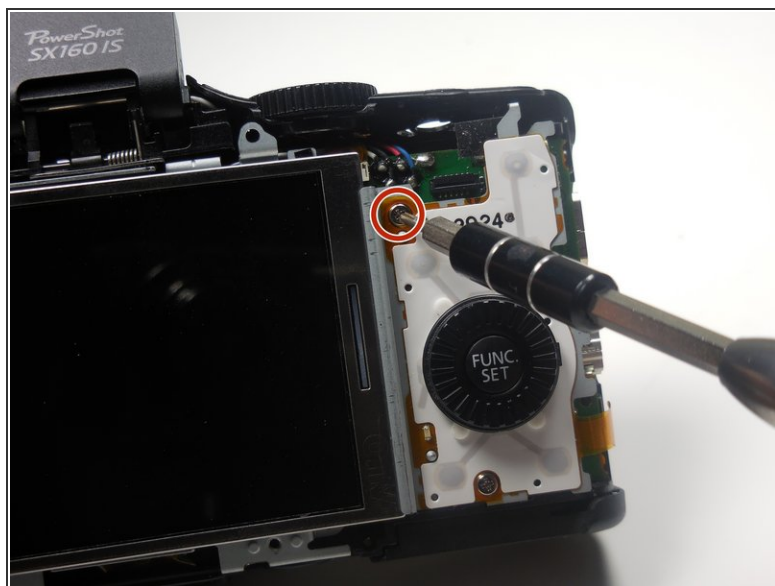
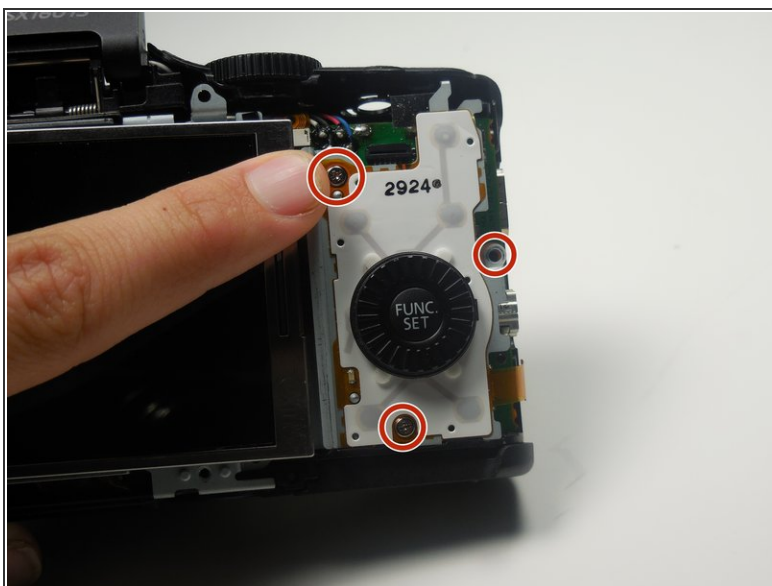
Step 2



- Using your hands, gently separate the back panel from the camera.
- Continue to pull the back panel until it completely detaches from the camera.

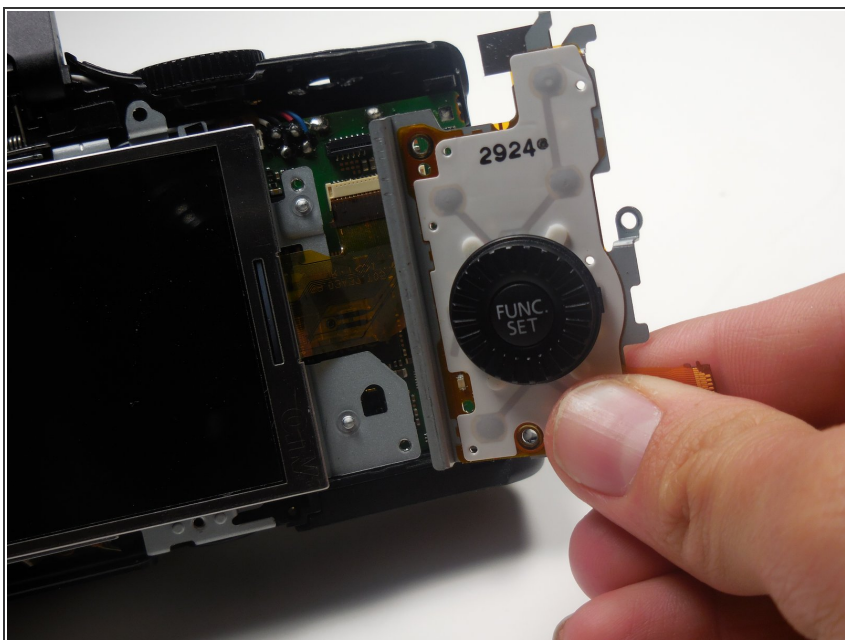
This document was generated on 2019-09-17 02:02:17 PM (MST).

Step 3



- Use a #0 phillips screwdriver to unscrew the 3-3.75mm silver Phillips head screws from the function wheel panel of the camera.

Step 4



- Remove and replace the function wheel.

Congratulations, you have successfully replaced your function wheel. To reassemble your device, follow these instructions in reverse order.