



Canon PowerShot SX160 IS Outer Case Replacement

This guide shows how to completely disassemble the Canon Power Shot SX160 IS.

Written By: Jamie Secretan





TOOLS:

- [Phillips #0 Screwdriver](#) (1)
-

Step 1 — Outer Case



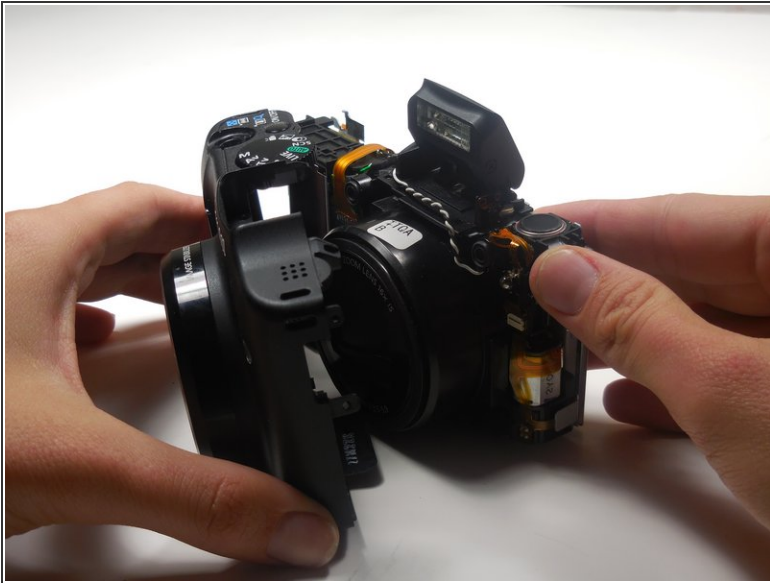
- Unscrew 2-4.8mm black screws from the front of the camera using a #0 Phillips screwdriver.
- Unscrew 2-4.8mm black screws from the side of the camera using a #0 Phillips screwdriver.
- Unscrew 2-4.8mm black screws from the bottom of the camera using a #0 Phillips screwdriver.

Step 2



- Using your hands, gently separate the back panel from the camera.
- Continue to pull the back panel until it completely detaches from the camera.

Step 3



- Use your hands to gently separate the front panel from the camera.
- Continue to pull the front panel until it completely detaches from the camera.

To reassemble your device, follow these instructions in reverse order.