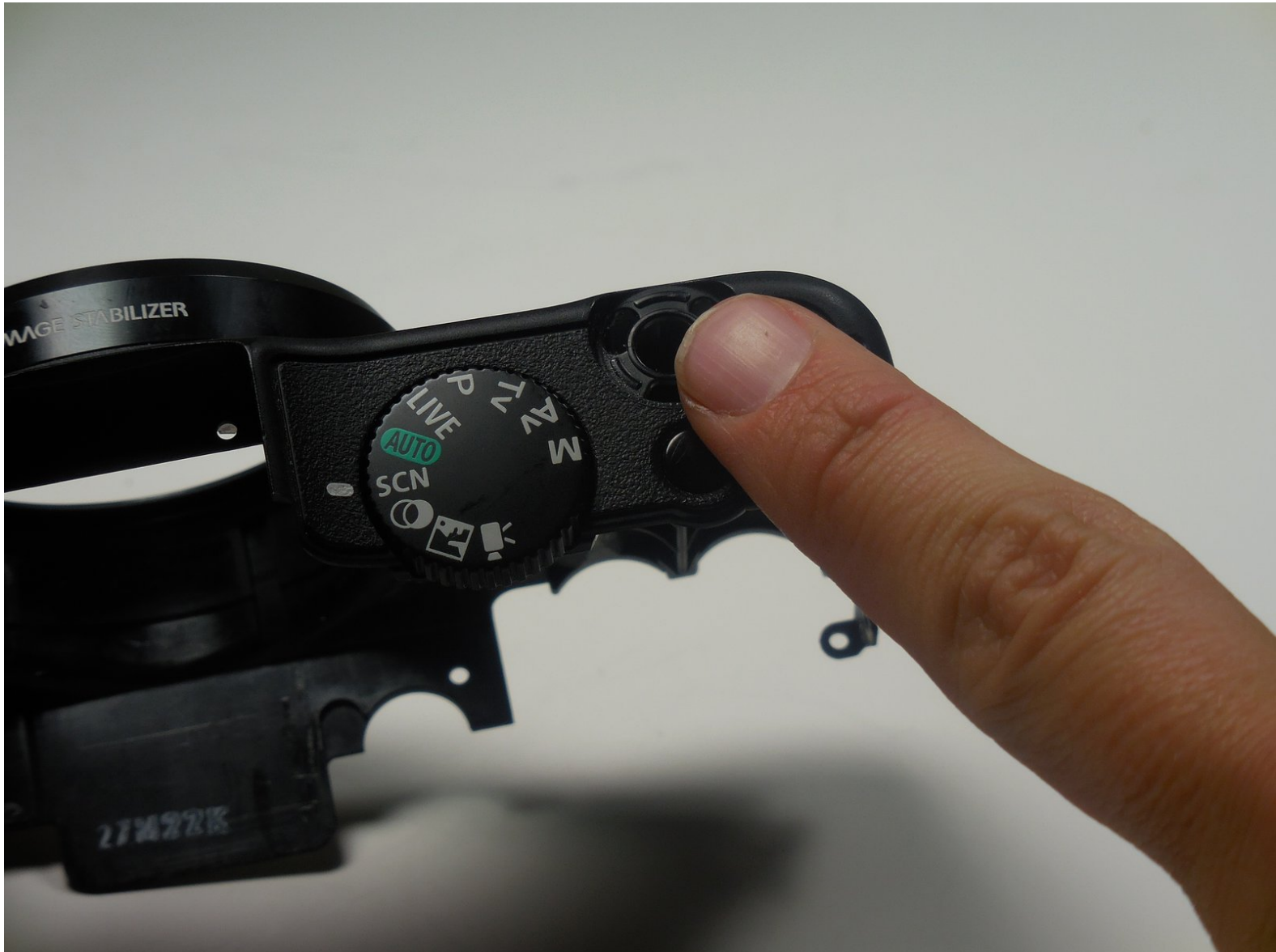




Canon PowerShot SX160 IS Shutter Button Replacement

This guide describes the steps to replacing a shutter button.

Written By: Jamie Secretan



INTRODUCTION

This guide walks you through how to replace a shutter button on your Canon PowerShot SX160 IS by disassembling a portion of the camera to access the non operational piece.



TOOLS:

- [Phillips #0 Screwdriver](#) (1)
-

Step 1 — Shutter Button



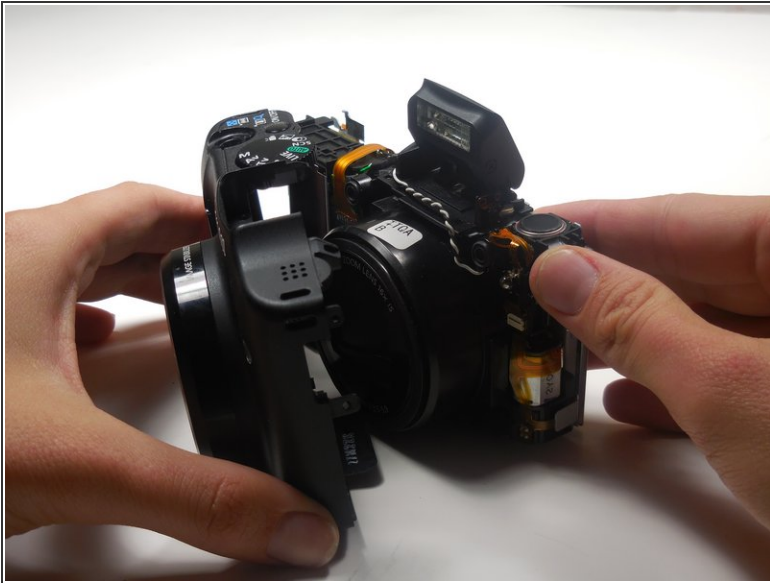
- Unscrew 2-4.8mm black screws from the front of the camera using a #0 Phillips screwdriver.
- Unscrew 2-4.8mm black screws from the side of the camera using a #0 Phillips screwdriver.
- Unscrew 2-4.8mm black screws from the bottom of the camera using a #0 Phillips screwdriver.

Step 2



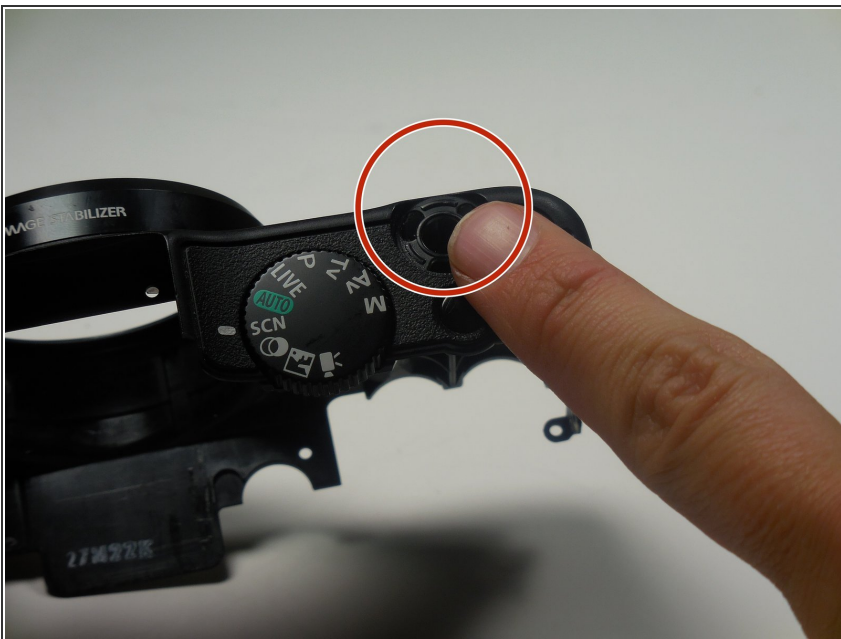
- Using your hands, gently separate the back panel from the camera.
- Continue to pull the back panel until it completely detaches from the camera.

Step 3



- Use your hands to gently separate the front panel from the camera.
- Continue to pull the front panel until it completely detaches from the camera.

Step 4



- Locate and replace the shutter button on the front panel of the camera.

Congratulations, you have successfully replaced your shutter button. To reassemble your device, follow these instructions in reverse order.