



# Canon PowerShot SX260 HS LCD Screen Replacement

This guide will show you how to disassemble the camera to replace the LCD Screen on the Canon PowerShot SX260 HS.

Written By: Tyler Kelch



# INTRODUCTION

If you need to replace your LCD Screen on your Canon PowerShot SX260 HS this guide is for you!



## TOOLS:

- [64 Bit Driver Kit](#) (1)
  - [iFixit Opening Tools](#) (1)
  - [Tweezers](#) (1)
-

## Step 1 — LCD Screen



**⚠ Be sure to always remove the battery from the camera before disassembling to avoid permanent damage.**

- The camera has a total of 6 (3 mm) external screws that will need to be removed; 2 on the left side, 2 on the bottom, and 2 on the right side.
- Remove the 2 (3 mm) screws on the left side
- Remove the 2 (3 mm) screws on the bottom of the camera.
- Remove the 2 (3 mm) screws on the right side of the camera.

## Step 2



- Use your plastic opening tool to gently lift and remove back face plate.
- Unplug the ribbon cable leading to the mode dial.

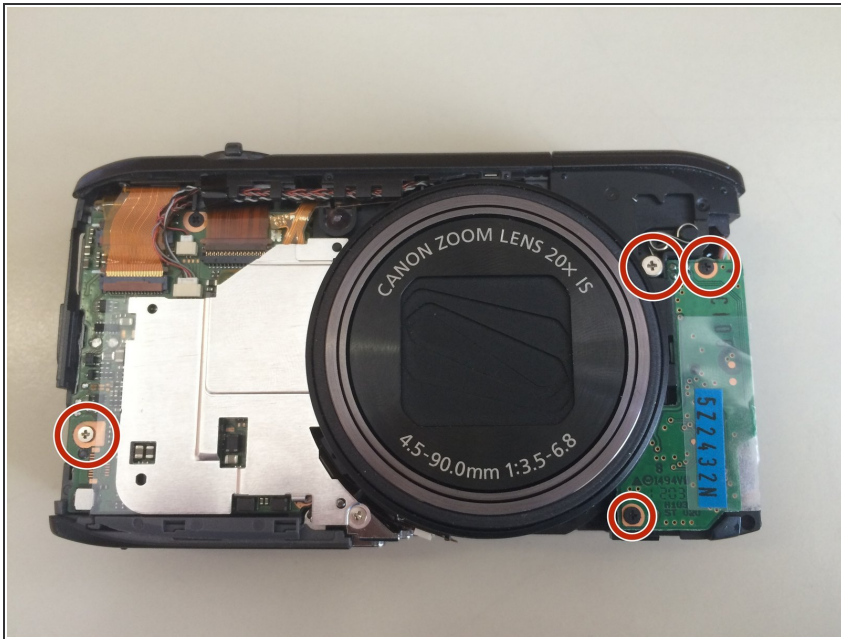
## Step 3



- After removing exterior screws, gently lift off the front face plate with your fingers.

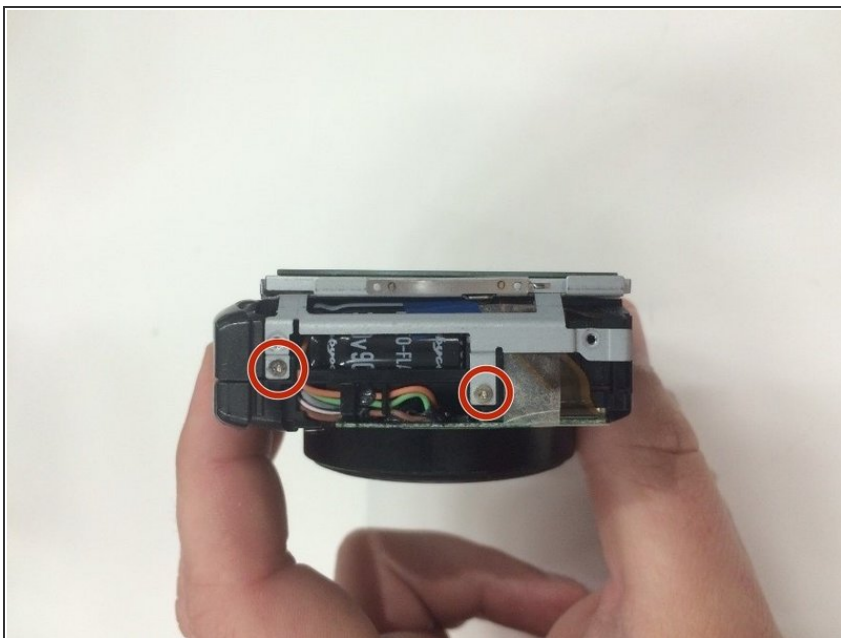


## Step 4



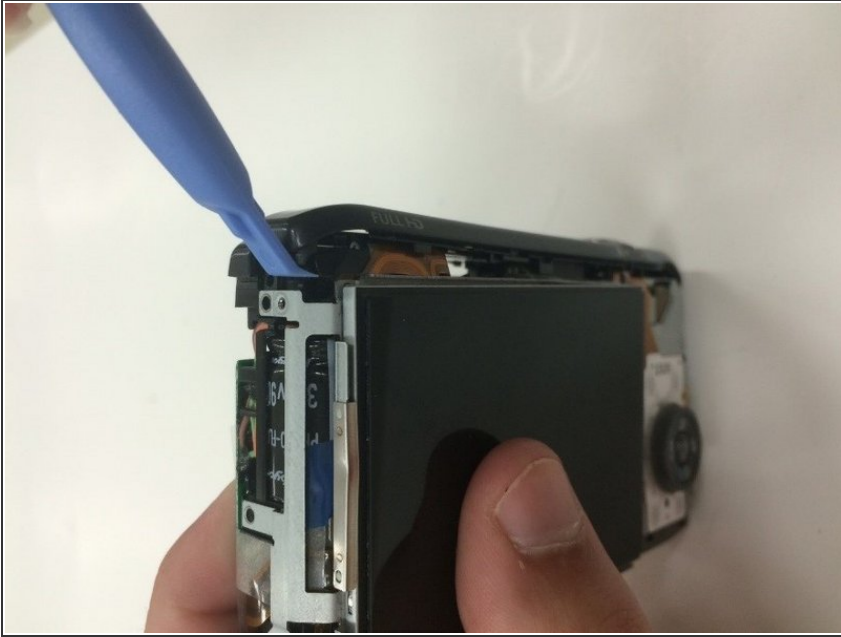
- Remove the 4 (3 mm) screws that are under the face plate.

## Step 5



- Next, remove the 2 (3 mm) interior screws on the left side of the camera.

## Step 6



- After removing the interior left screws, use a plastic opening tool to gently pull the top face plate off.

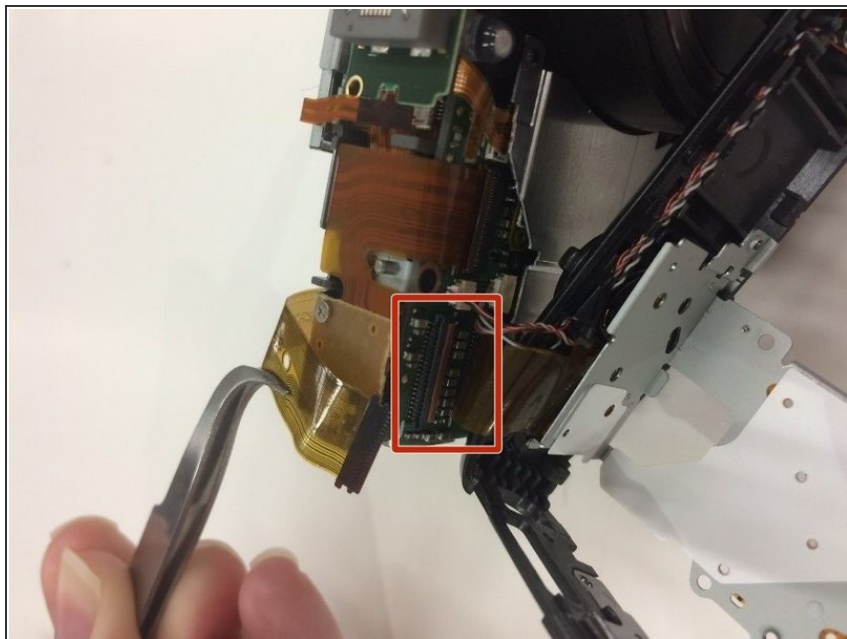
## Step 7



- Next, take off the 2 (3mm) screws on the back side of the camera to remove the dial panel.
- Gently lift the panel with your fingers.

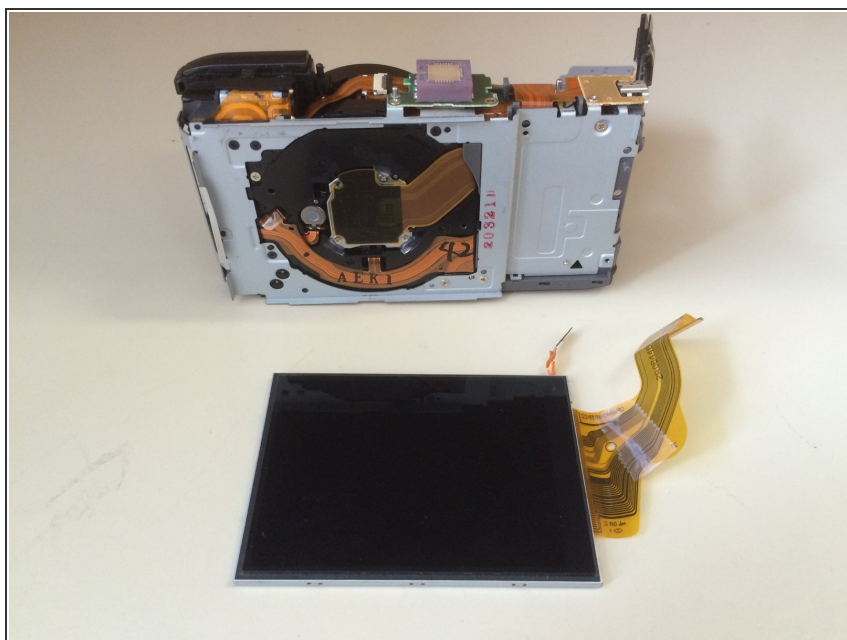
**⚠ Be careful not to rip the attached yellow ribbon cable.**

## Step 8



- Carefully unplug the yellow ribbon cable from the front of the camera using your tweezers.

## Step 9



- Gently slide the LCD screen to the right and remove.

To reassemble your device, follow these instructions in reverse order.