



Canon PowerShot SX260 HS Motherboard Replacement

In this guide we will be giving a walk through on a step by step basis on how to simply and effectively replace the motherboard on your Canon PowerShot SX260_HS

Written By: Tyler Kelch





TOOLS:

- [64 Bit Driver Kit](#) (1)
 - [iFixit Opening Tools](#) (1)
 - [Tweezers](#) (1)
-

Step 1 — Motherboard



⚠ *Be sure to always remove the battery from the camera before disassembling to avoid permanent damage.

- There are a total of 6 (3mm) external screws that will need to be removed; 2 on the left side, 2 on the bottom, and 2 on the right side.
- 1.) Remove the 2 screws on the left side
- 2.) Remove the 2 screws on the bottom of the camera.
- 3.) Remove the 2 screws on the right side of the camera.

Step 2



- Use spludger tool or small flathead screw driver to gently lift and remove back face plate.

Step 3



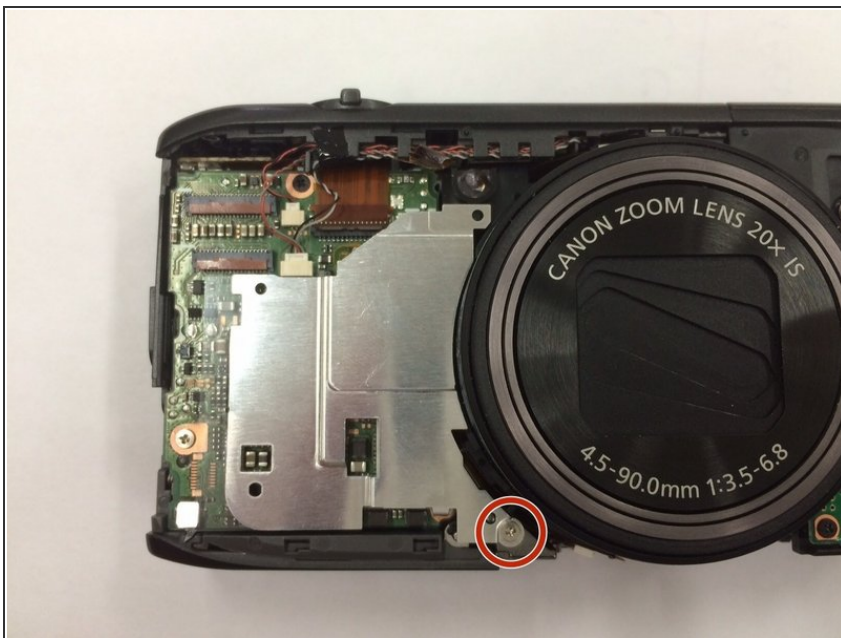
- After removing exterior screws, gently lift off the front face plate.

Step 4



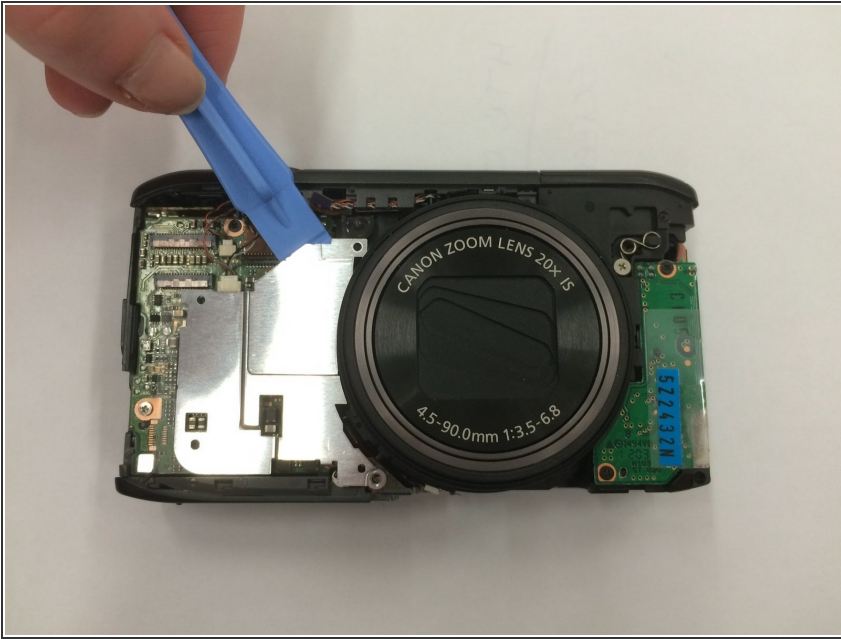
- After removing the front faceplate you will find 4 (3mm) screws on the interior.
- Remove all 4 interior screws.

Step 5



- Remove 1 (6 mm) Screw from the bottom of the silver metal plate. The screw is also silver

Step 6



- With blue spludger tool gently lift the metal plate from the face of the camera.
- The plate is held by a piece of double sided tape so there will be a bit of resistance.

Step 7



- Remove 3 (3 mm) screws from the top surface of the motherboard.
- You will notice that there is one on the top, and 2 on the bottom in a triangular shape.

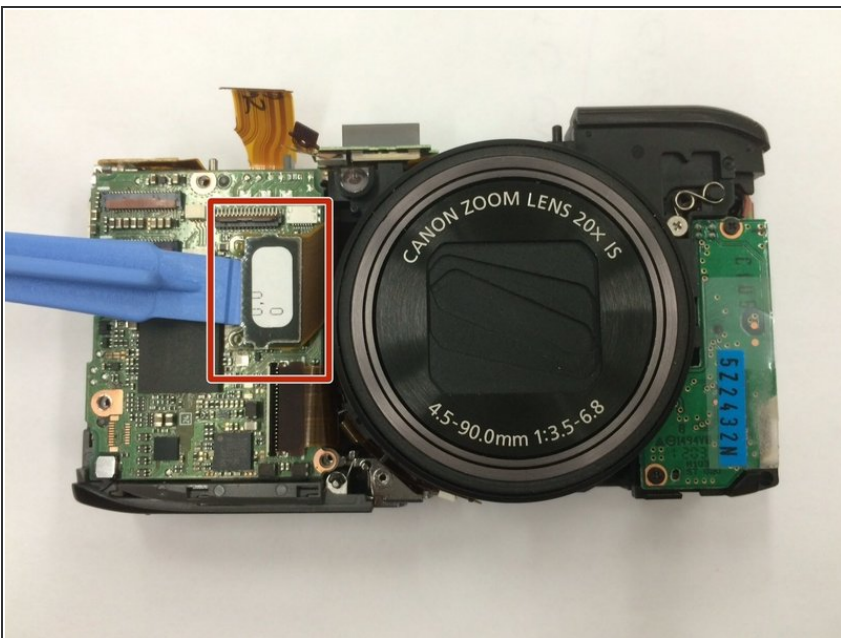
Step 8



- Gently remove the ribbon cable from the top of the motherboard with a pair of tweezers.

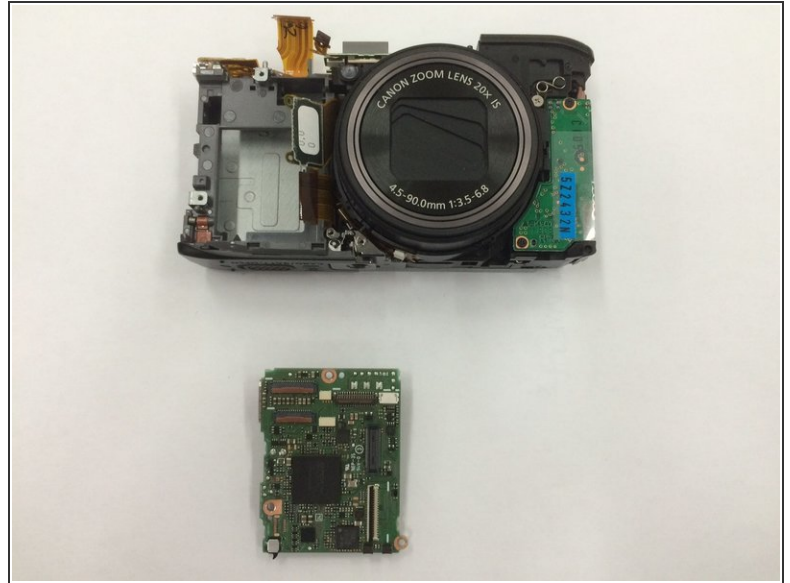
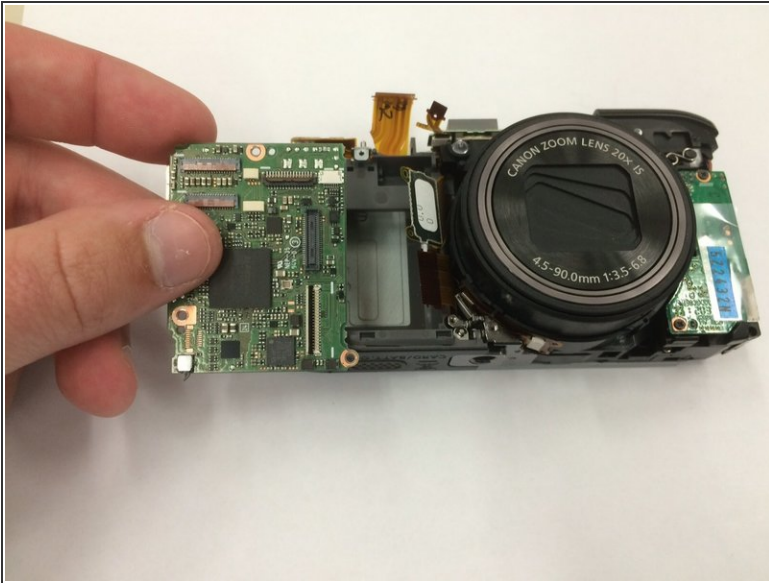
 **Be careful during this step not to rip or tear the cable.**

Step 9



- Use the blue spludger tool to gently unplug the last ribbon cable that is attached to the motherboard.

Step 10



- Remove the motherboard with your fingers.

To reassemble your device, follow these instructions in reverse order.