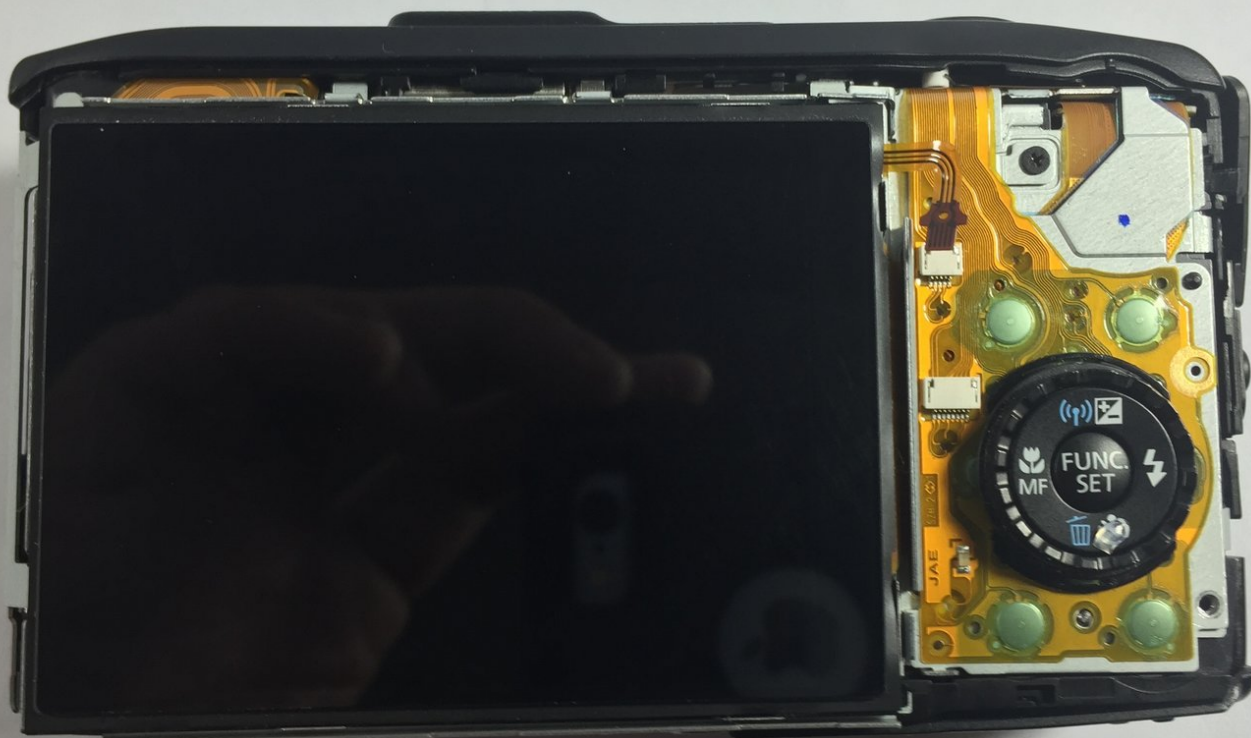




Canon PowerShot SX280 HS Back Button Panel Replacement

This guide will teach you how to replace the back button panel on your device.

Written By: Mason Boyd






TOOLS:

- [Phillips #00 Screwdriver](#) (1)
-

Step 1 — Back Button Panel



 Before taking apart your device the two most important steps are:

- Turning the camera off
- Removing the battery to reduce the risk of shock

Step 2



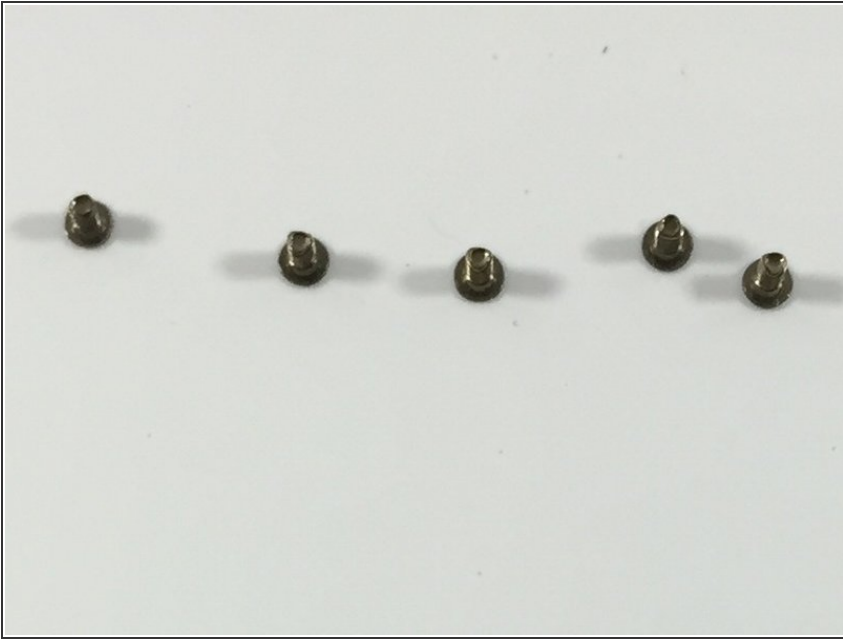
- Turn off the camera by holding the ON/OFF on the top of the camera.

Step 3



- Now that the camera is off the battery must be removed.
- Firmly place your finger on the battery door and slide to the right.
- Once the door is open, there will be a small orange button, which is the battery release. Slide this button down to release the battery.

Step 4



- Once the battery is removed, you can begin to take the outer screws out. Removing these will allow you to remove the camera case. It will require a #00 phillips screwdriver.
- Be sure to be careful when removing these screws as they are easy to lose. Be gentle as well, as they are made of weak material and can strip easily.

Step 5



- There are two screws in the left side of the camera, which are marked in the photo. These screws are

Step 6



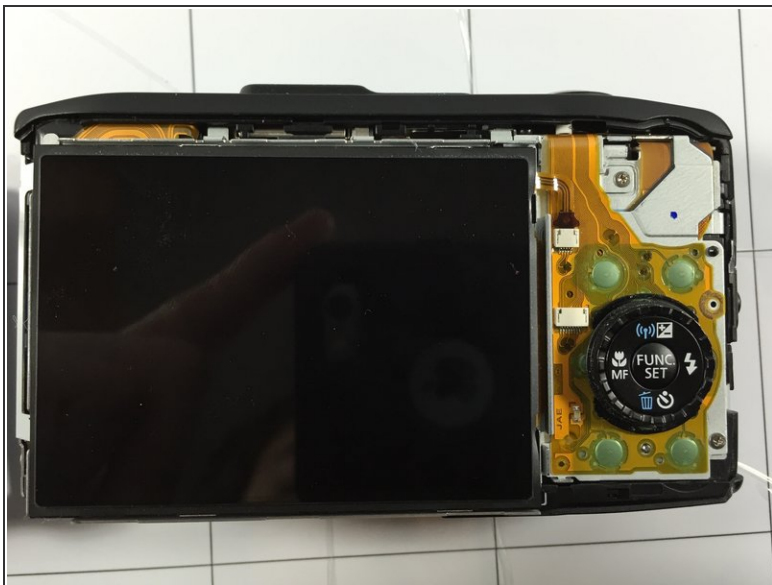
- There are two screws to remove on the right side of the camera, which are marked in the photo. These screws are

Step 7



- Finally, there are two screws on the bottom that need to be removed. These screws are

Step 8



- Now that the outer screws have been removed you can begin to remove the back case which contains the buttons.
- Gently remove the back case, and replace it with the new one.

To reassemble your device, follow these instructions in reverse order.