



# Canon PowerShot SX280 HS Case Replacement

This guide will show users how to replace their camera case if it is broken or damaged.

Written By: Mason Boyd








## TOOLS:

- [Phillips #00 Screwdriver](#) (1)
-



## Step 1 — Case



 Before taking apart your device ensure that you have:

- Turned the camera off.
- Removed the battery to reduce the risk of shock.

## Step 2



- Turn off the camera by pressing and holding the ON/OFF button that is located on the top of the camera.



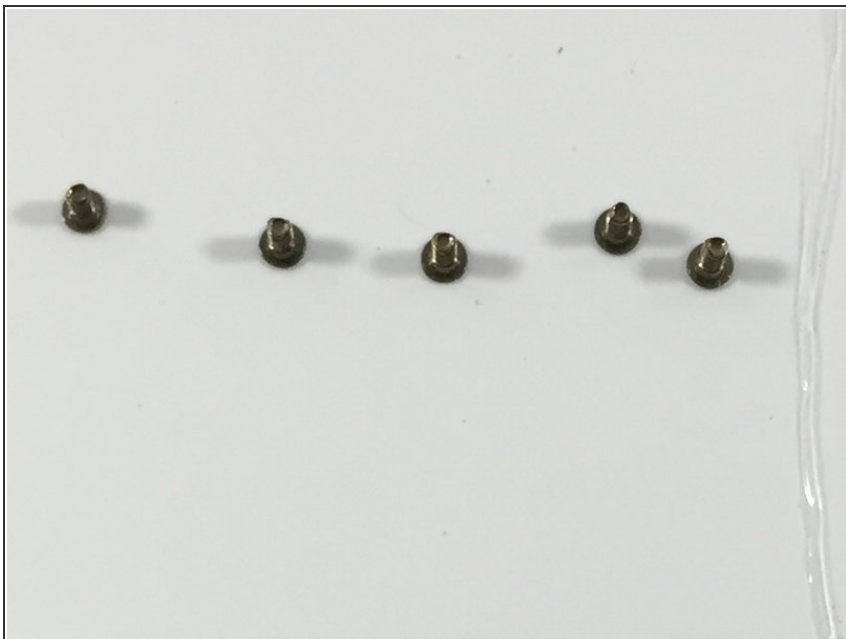
## Step 3



- Now that the camera is off, the battery can be removed.
- Firmly place your finger on the battery door and slide to the right.
- Once the door is open, a small orange button will be visible. Slide this button down to release the battery.



## Step 4



- Now you can begin to take the outer screws out. Removing these will allow you to remove the camera case. It will require a #00 Phillips Screwdriver.

## Step 5



- There are two screws in the left side of the camera, which are marked in the photo. Remove these screws first.



## Step 6



- There are two screws to remove on the right side of the camera as well, as marked in the photo. Remove these screws next.

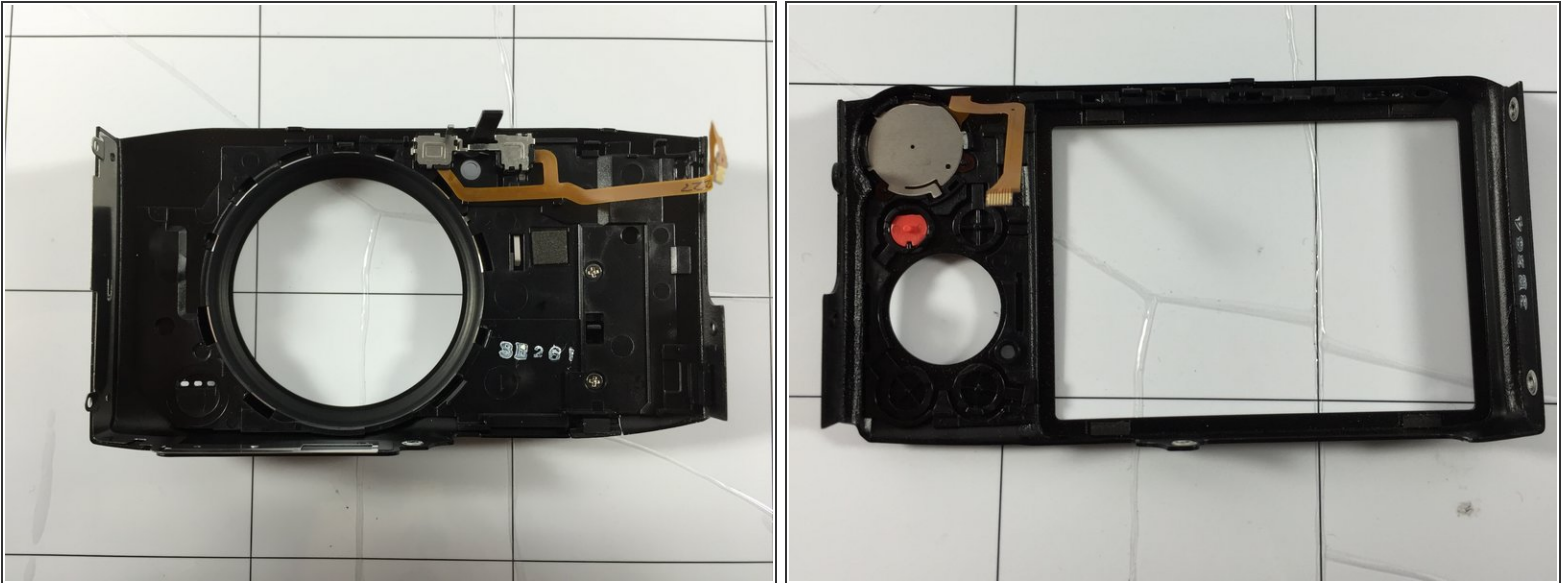
## Step 7



- Finally, there are two screws on the bottom that need to be removed, which are marked in the photo.



## Step 8



- Now that the outer screws are removed, you can take the case off.
- Gently separate the case from the body of the camera. The camera case will separate into two pieces.
- Do not leave the case off for too long, as dust could settle in to the camera and impair the its functionality.



## Step 9



- Now you can place a new camera case on the camera. As said in the step above, be wary of leaving the case off for too long, as this could damage key components in the camera.

To reassemble your device, follow these instructions in reverse order.