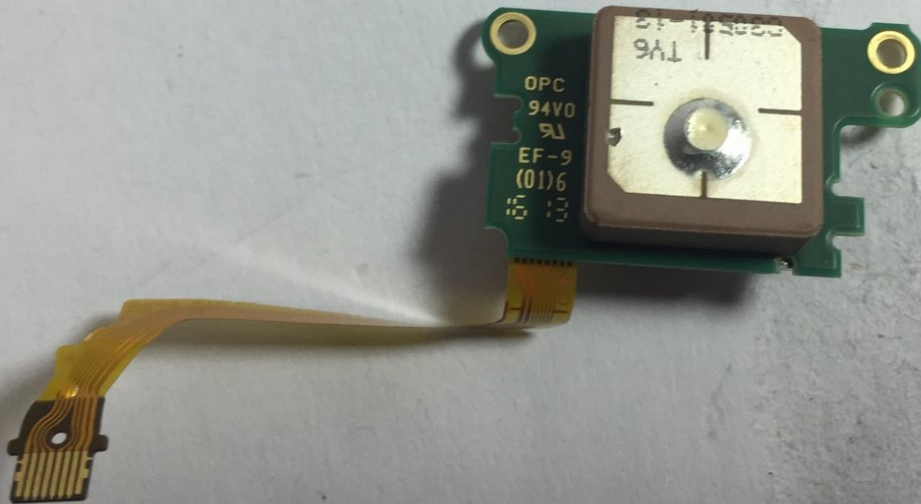




Canon PowerShot SX280 HS GPS Replacement

This guide will demonstrate how to disassemble the Canon Powershot SX280 HS and replace a broken, damaged, or dysfunctional GPS unit within the camera.

Written By: Keith



INTRODUCTION

This guide demonstrates how to safely and properly replace the GPS in a Canon PowerShot SX280 HS. In order to do this, you will need a #00 Phillips Screwdriver, a safe place to keep the screws that will be removed, and a replacement GPS for the camera.



TOOLS:

- [Phillips #00 Screwdriver](#) (1)
- [Spudger](#) (1)




PARTS:

- [Canon powerShot SX280 HS replacement GPS](#) (1)

Step 1 — Case



 Before taking apart your device ensure that you have:

- Turned the camera off.
- Removed the battery to reduce the risk of shock.

Step 2



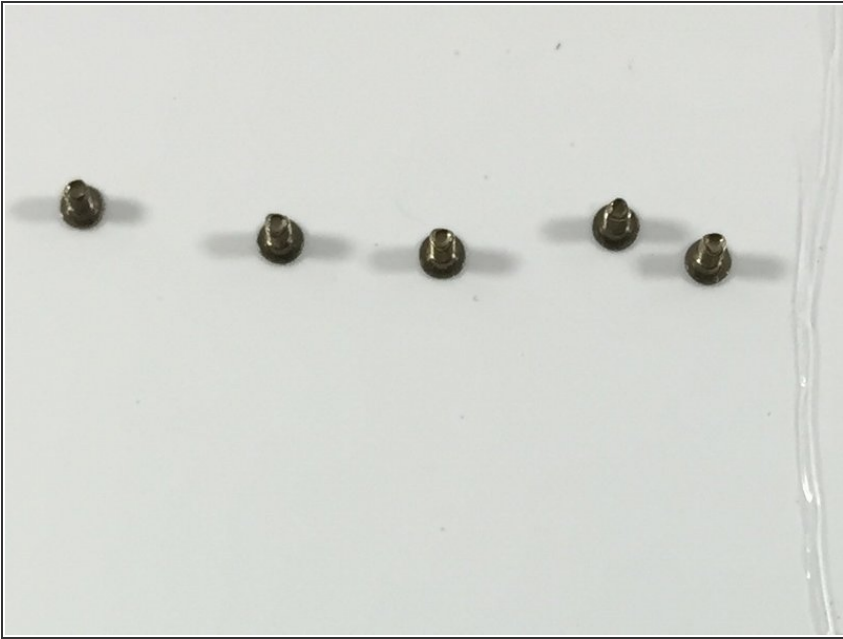
- Turn off the camera by pressing and holding the ON/OFF button that is located on the top of the camera.

Step 3



- Now that the camera is off, the battery can be removed.
- Firmly place your finger on the battery door and slide to the right.
- Once the door is open, a small orange button will be visible. Slide this button down to release the battery.

Step 4



- Now you can begin to take the outer screws out. Removing these will allow you to remove the camera case. It will require a #00 Phillips Screwdriver.

Step 5



- There are two screws in the left side of the camera, which are marked in the photo. Remove these screws first.

Step 6



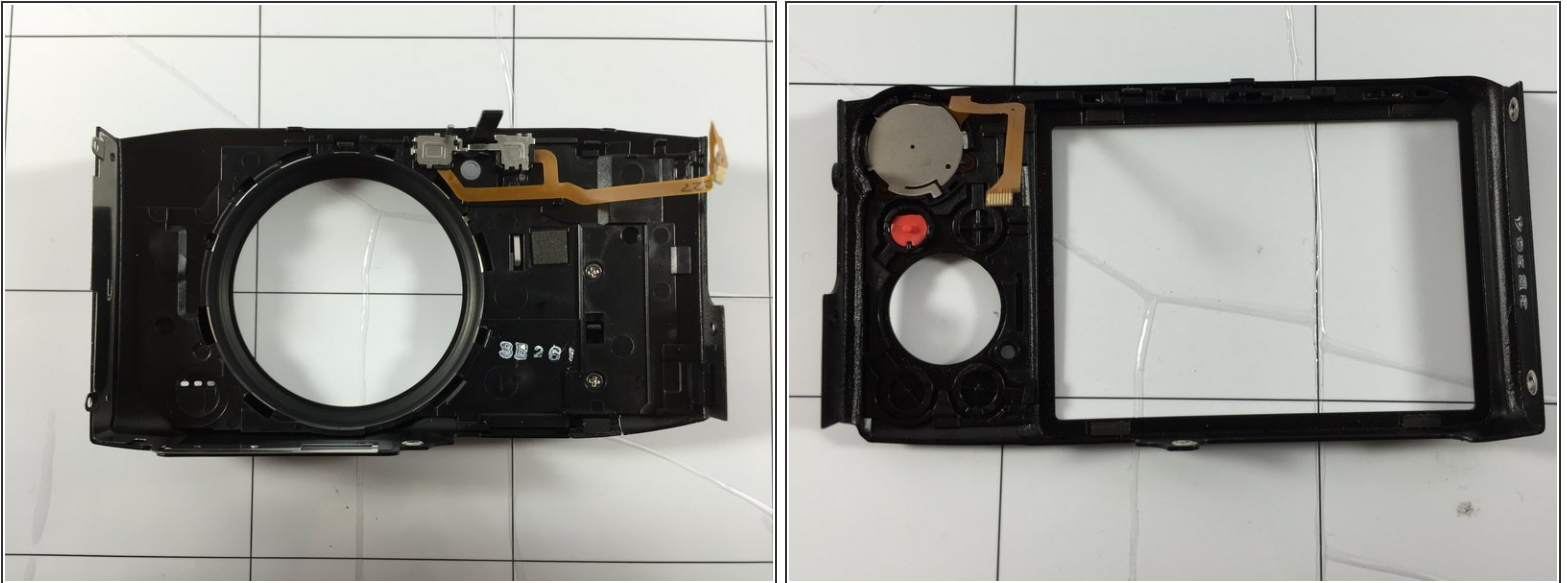
- There are two screws to remove on the right side of the camera as well, as marked in the photo. Remove these screws next.

Step 7



- Finally, there are two screws on the bottom that need to be removed, which are marked in the photo.

Step 8



- Now that the outer screws are removed, you can take the case off.
- Gently separate the case from the body of the camera. The camera case will separate into two pieces.
- Do not leave the case off for too long, as dust could settle in to the camera and impair the its functionality.

Step 9



- Now you can place a new camera case on the camera. As said in the step above, be wary of leaving the case off for too long, as this could damage key components in the camera.

Step 10 — GPS

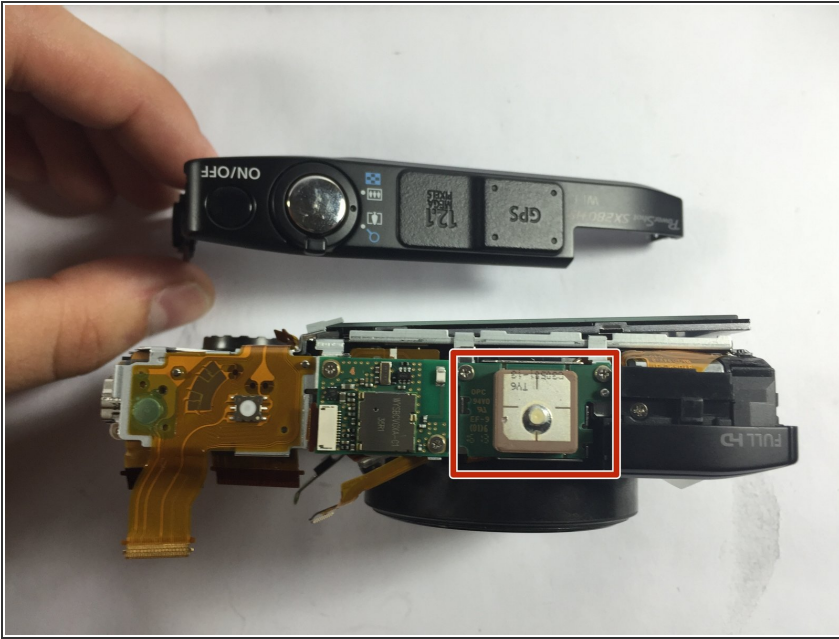


i After removing the camera case, your device should look like this.

- Use your #00 Phillips Screwdriver to remove a .05/.102 screw from the proactive plate that covers the motherboard.
- Once the screw is removed, the plate should lift off easily.

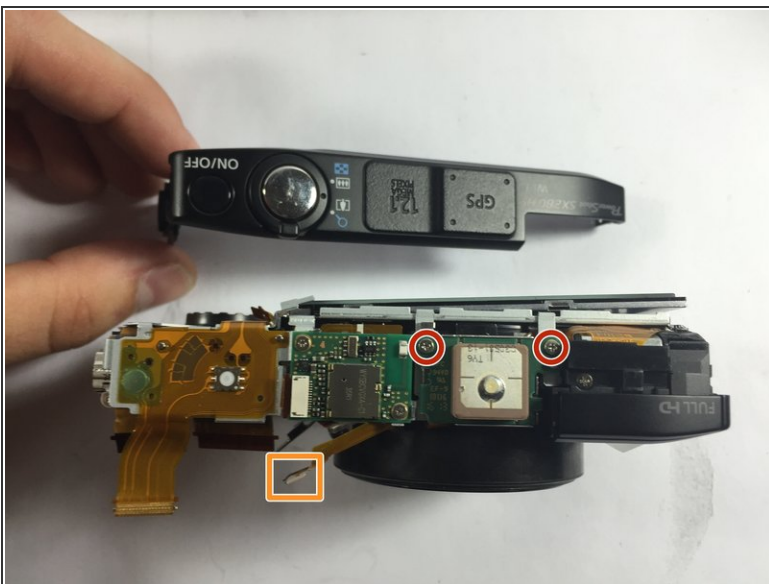
This document was generated on 2019-09-26 03:16:36 PM (MST).

Step 11



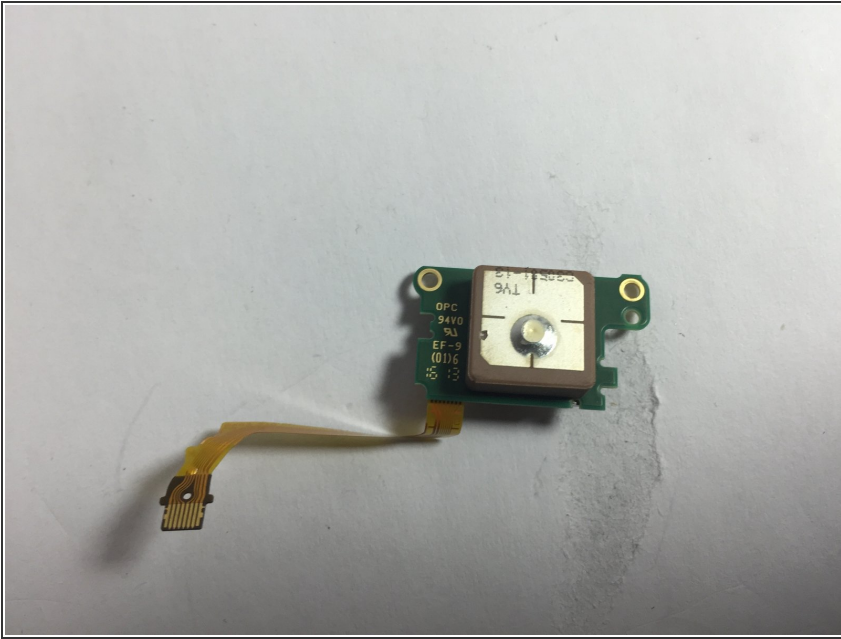
- Grip the top of the case by its sides with moderate force and pull up.
- ⓘ This disconnects the plastic tabs on the inside and releases the case, resulting in its removal.
- Now the GPS chip component will be visible and available.

Step 12



- Remove the tab located and connected to the front of the camera.
- Use a #00 Phillips Screwdriver to remove the two .05/.102 screws.

Step 13



- Once the screws are removed, the GPA chip can be removed.
- Now it is ready for a new replacement part.

To reassemble your device, follow these instructions in reverse order.