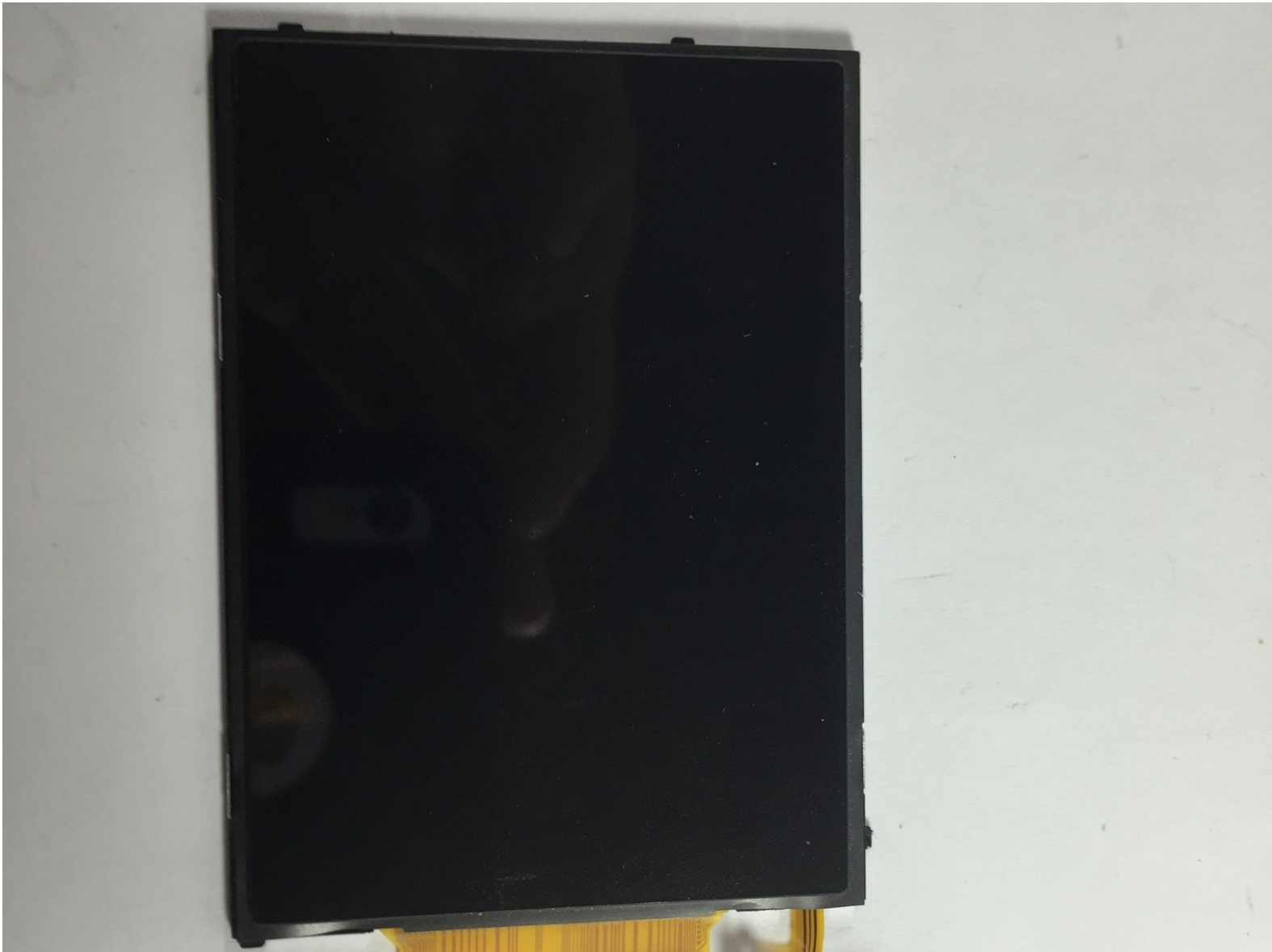




Canon PowerShot SX280 HS LCD Screen Replacement

Replace the LCD Screen in your Canon PowerShot SX280 HS.

Written By: Osmand A Munoz



INTRODUCTION

This guide teaches you how to replace your broken or worn Canon PowerShot SX280 HS LCD screen. It will show you how to remove and install a new screen. The process is safe and easy. It requires no special skills.



TOOLS:

- [iFixIt Phillips #00 Screwdriver](#) (1)



PARTS:

- [LCD screen for Canon Powershot SX280 HS](#) (1)

Step 1 — LCD Screen



- Turn off the camera and remove the battery.

Step 2



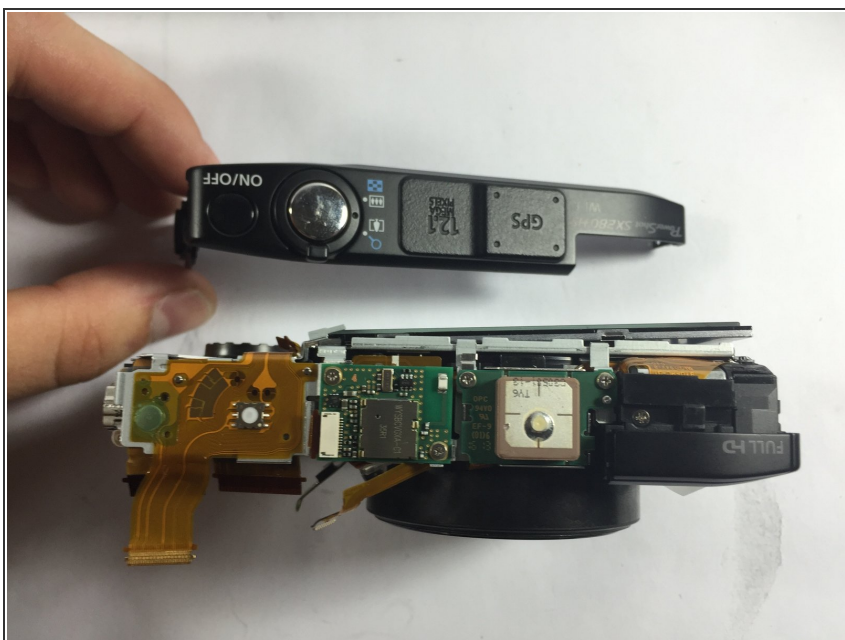
- Use a Phillips #00 screwdriver to remove the two 3.4 mm screws on the left side of the camera.

Step 3



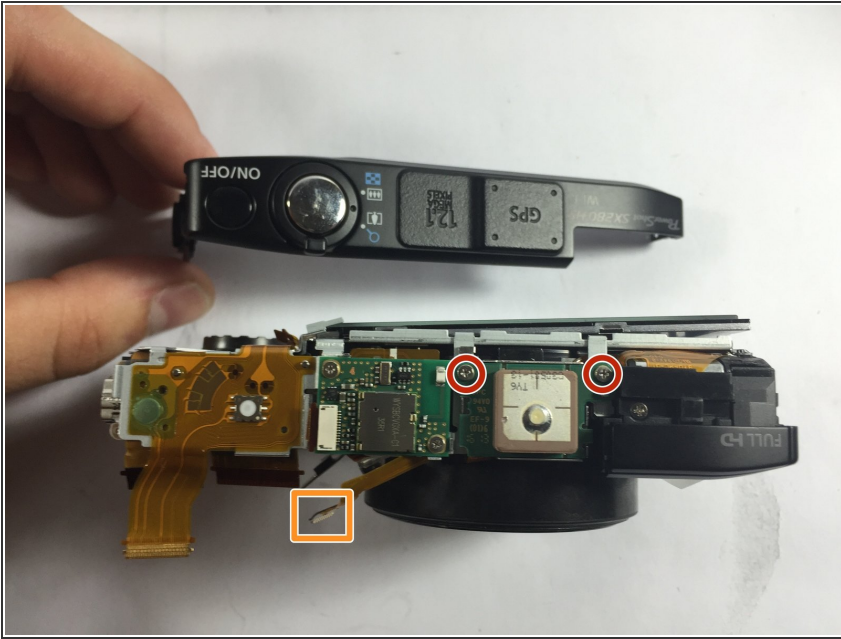
- Using the same screwdriver, remove the two 3.4 mm screws on the bottom of the camera.

Step 4



- Lift the small plastic tab, located on the front of the camera, to remove the GPS cover.

Step 5



- Using the same Phillips screwdriver, remove the two screws that hold the LCD screen.
- Remove the other small tab attached to the LCD screen.

Step 6



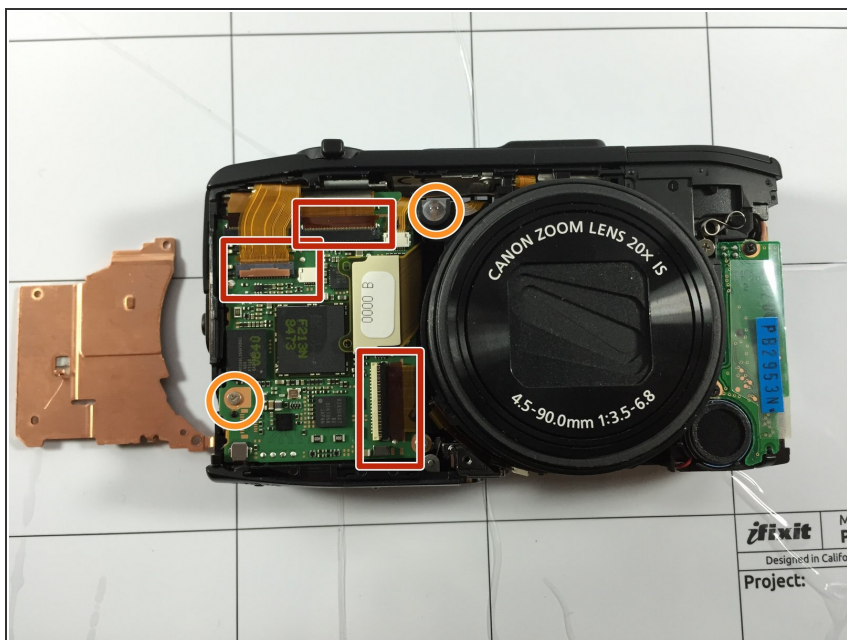
- When removing the plastic casting, do not pull it all the way off. Detach the small tab first and make sure nothing else is attached to the casing.

Step 7



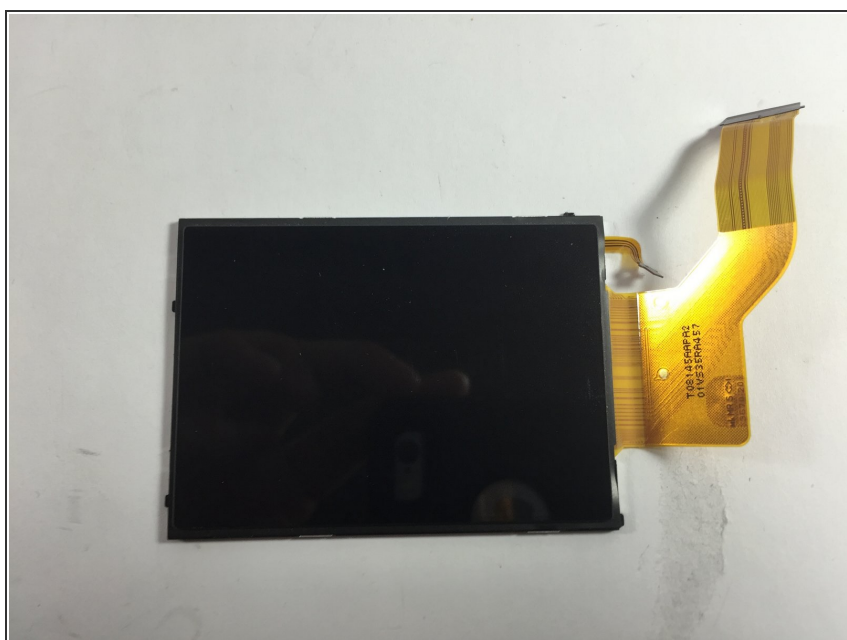
- To remove the tabs from the camera, remove all screws.
- Slowly lift the screen out of the camera using the tabs.

Step 8



- Use the tabs, outlined in red, to slowly remove the LCD screen.
- Remove the screws to remove the camera motherboard.

Step 9



- Insert the replacement LCD screen.
- Ensure that the long strip is attached to the original position.

Step 10



- To reassemble your device, follow Steps 2 to 9 in reverse order.