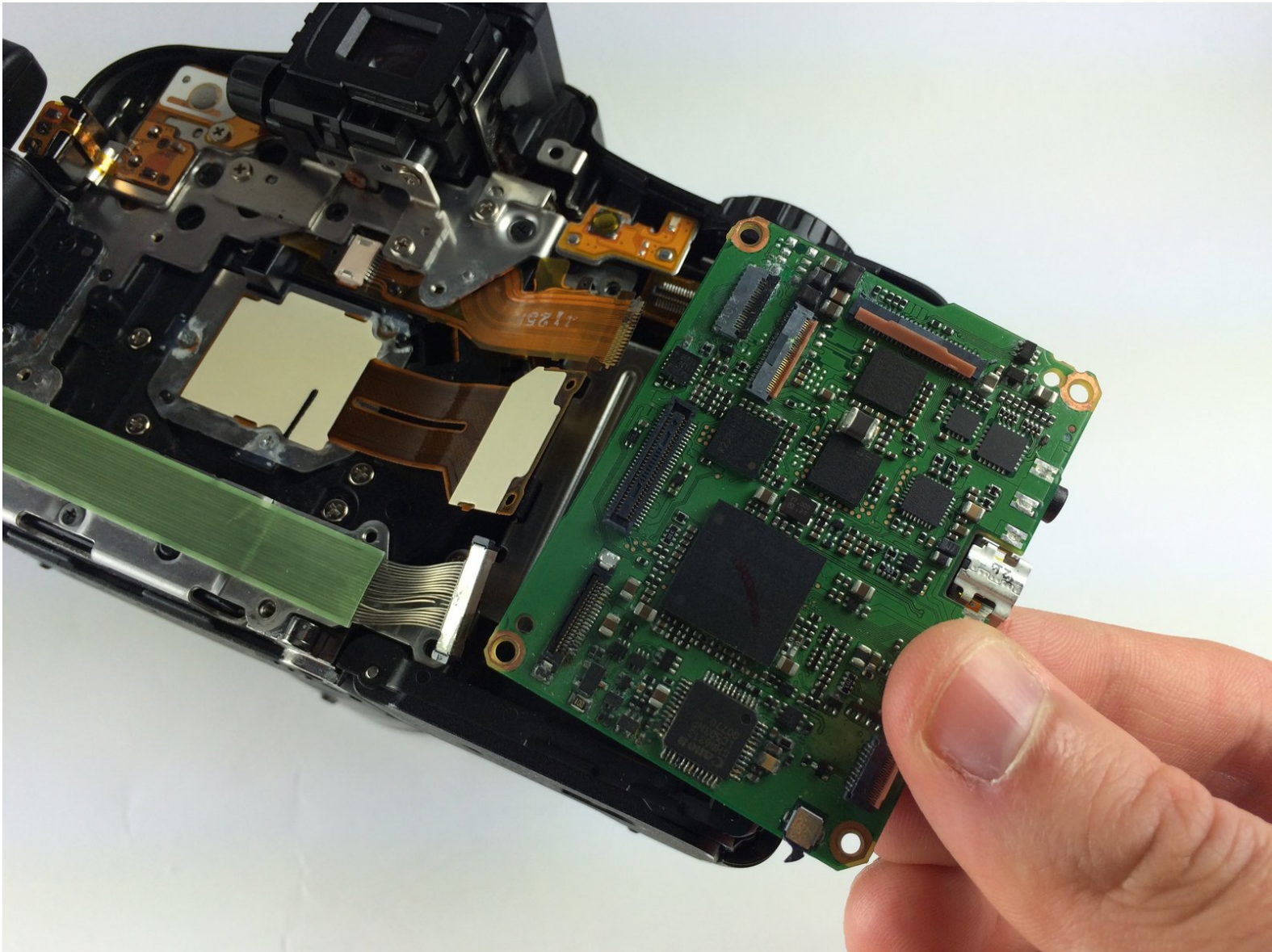




# Canon PowerShot SX50 HS Motherboard Replacement

This guide will show you how to remove and replace the motherboard.

Written By: Remington Goodwin



---

# INTRODUCTION

Replace the motherboard of the Canon PowerShot SX50 HS.



## TOOLS:

- [Phillips #000 Screwdriver](#) (1)
  - [Tweezers](#) (1)
  - [iFixit Opening Tools](#) (1)
-

## Step 1 — Battery



- Locate the battery compartment on the bottom of the camera.
- Push the latch on the outside of the battery door to the right to get to the battery pack inside.

## Step 2



- Pull the brown latch on the inside of the battery door towards your palm (to the left). The battery pack should pop out (battery not pictured).
- Now remove the battery pack from the camera with your fingers.



## Step 3 — Rear Case



- Remove the two Phillips #000 screws, length 5 mm, on either side of the viewfinder.
- Remove the one Phillips #000 screw, length 4 mm, on the bottom, closer to the back side of the camera.

## Step 4



- Remove the two Phillips #000 screws, length 3 mm, on the left side of camera.
- Remove the Phillips #000 screw, length 4 mm, located between the two 3 mm screws.
- Remove the two Phillips #000 screws, length 4 mm, on the bottom left corner of the camera.

## Step 5



- Find the "A/V Out Digital" charging station and lift up the flap.
- Remove the two Phillips #000 screws, length 5 mm, that are under the "A/V Out Digital" flap.
- Remove the one Phillips #000 screw, length 5 mm, that is outside the "A/V Out Digital" flap.

## Step 6



- Use the plastic opening tool to carefully start lifting up the camera's left-side panel. Then use your fingers to pry off the rest.

## Step 7



- Make sure the LCD screen panel, the battery compartment door, and the 'A/V Out Digital' flap are all open.
- Using your fingers, carefully pry off the back encasement (you may need to use a plastic opening tool to help you).

**⚠** Do not remove the back casing too far or too quickly. There is a wire ribbon attaching the back encasement to the motherboard that is very delicate.



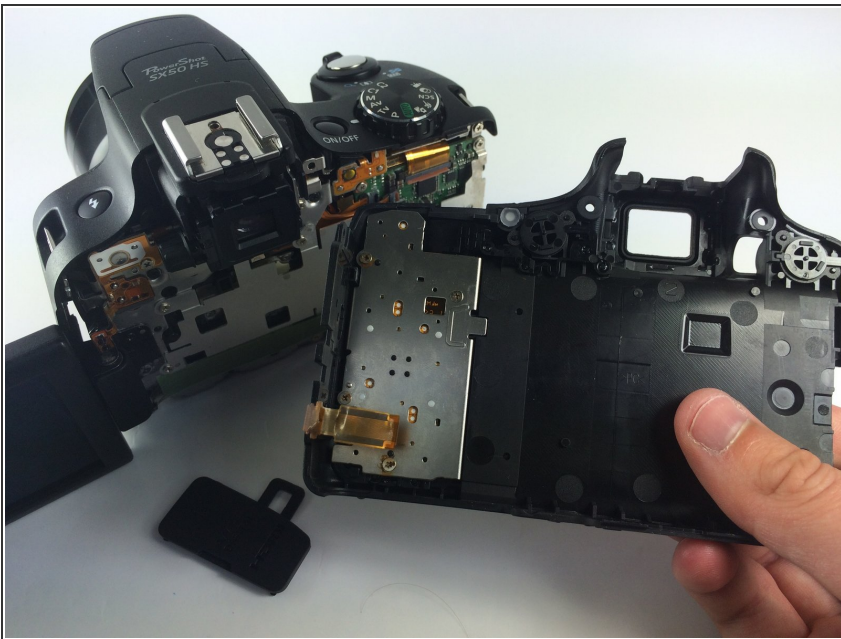
## Step 8



- Find the orange wire ribbon attaching the back encasement to the I/O board in the lower right-hand corner of the camera (lens facing away).
- Carefully lift up the brown clip holding the wire ribbon in place and pull the ribbon out of the clasp with your fingers or tweezers.

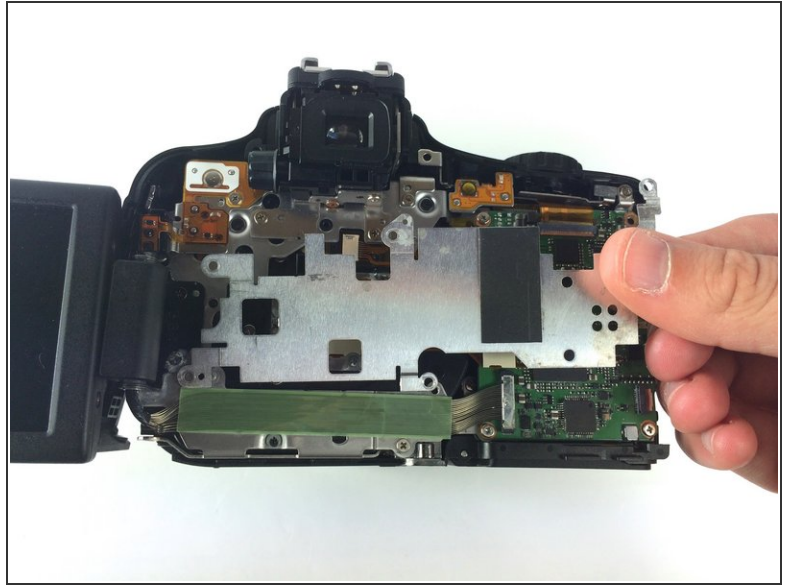
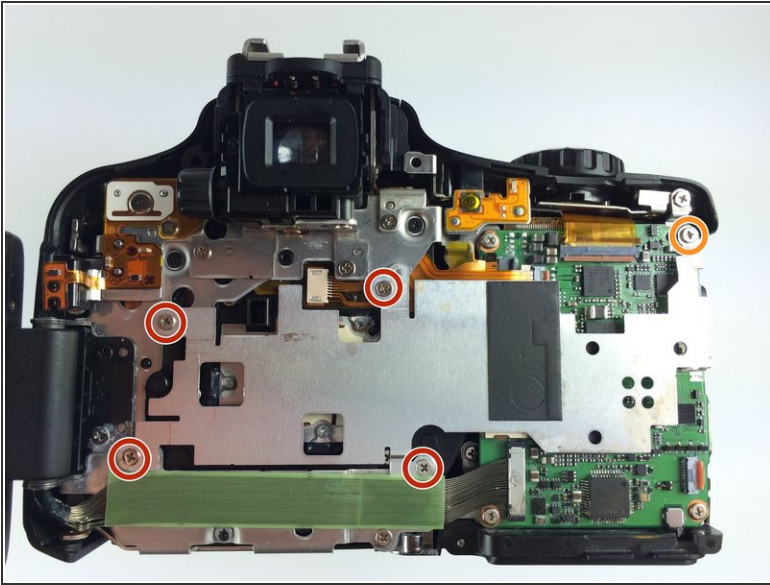
⚠ Be cautious when removing the wire ribbon; it is very delicate.

## Step 9



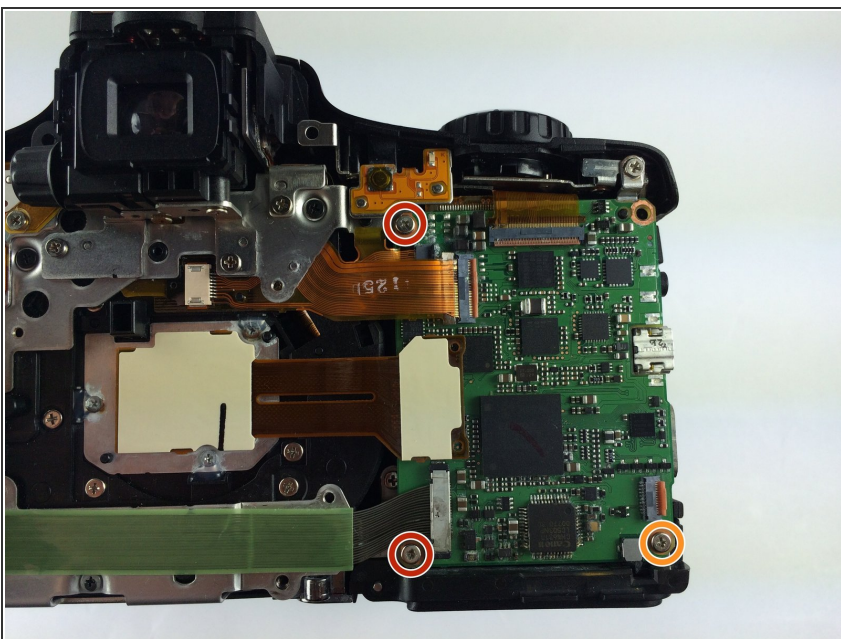
- Now you can completely separate the back encasement from the rest of the camera.

## Step 10 — Motherboard



- Remove the four #000 Phillips screws, 2 mm in length, from the metal plate.
- Remove the one #000 Phillips screw, 5 mm in length, from the metal plate.
- Lift the metal plate off with your fingers.

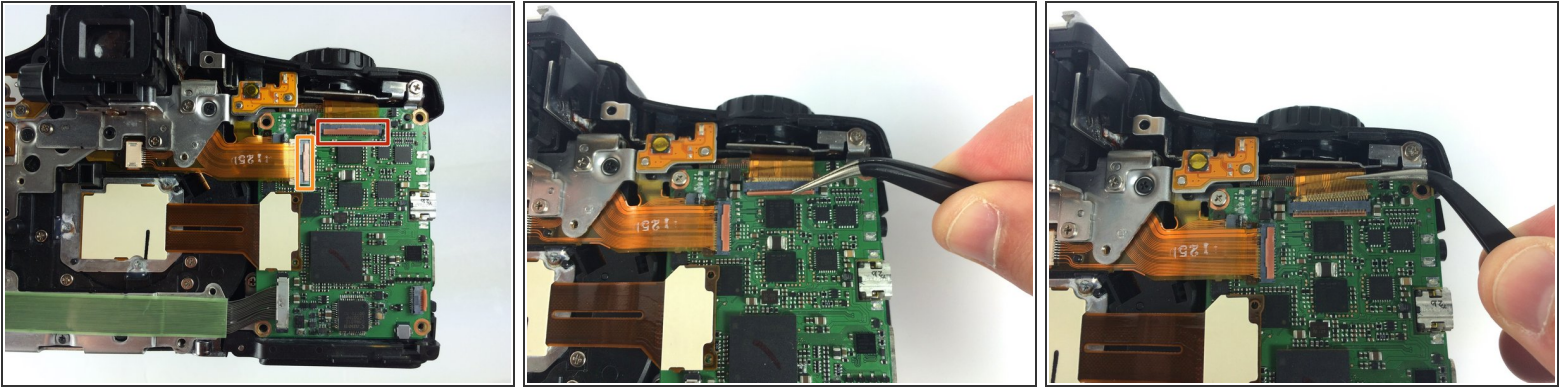
## Step 11



- Remove the two Phillips #000 screws, 5 mm in length, from the I/O board.
- Remove the one Phillips #000 screw, 3 mm in length, from the I/O board.



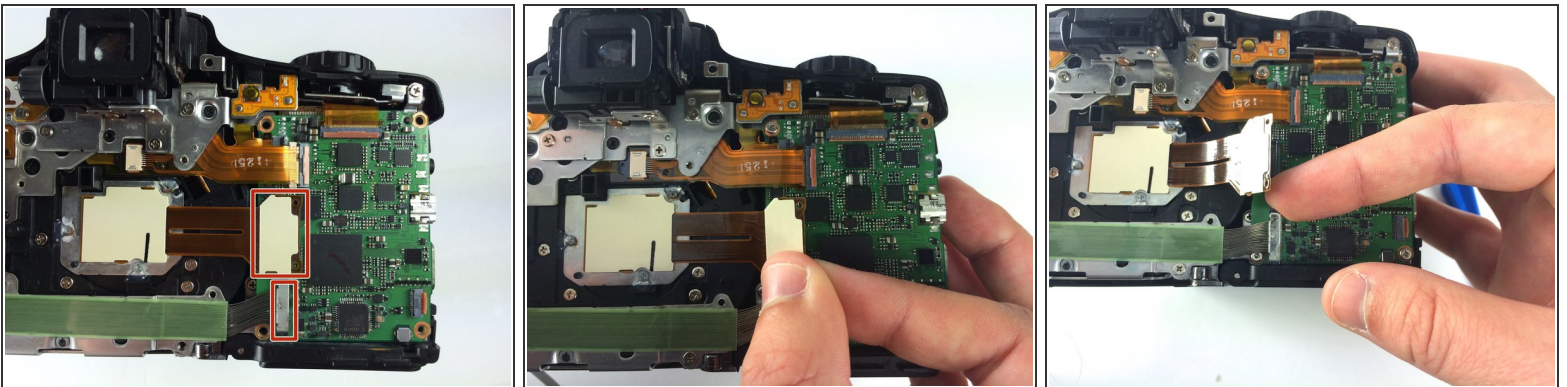
## Step 12



- To remove the topmost wire ribbon on the I/O board, lift up the brown latch, and then carefully pull out the ribbon. You can use your fingers or the tweezers.
- Remove the wire ribbon on the top left corner of the I/O board with the same process as the previous step.

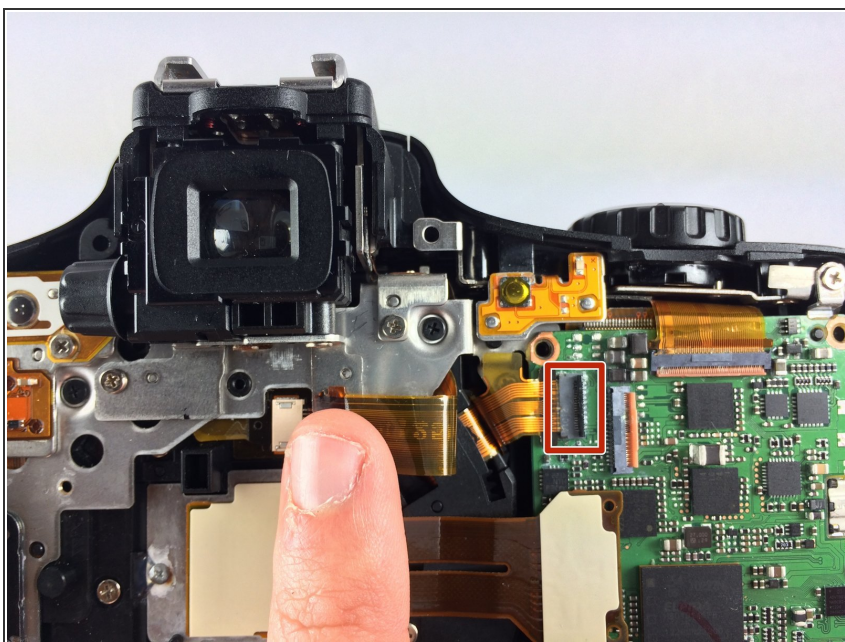
⚠ Be careful when removing wire ribbons; they are very delicate.

## Step 13



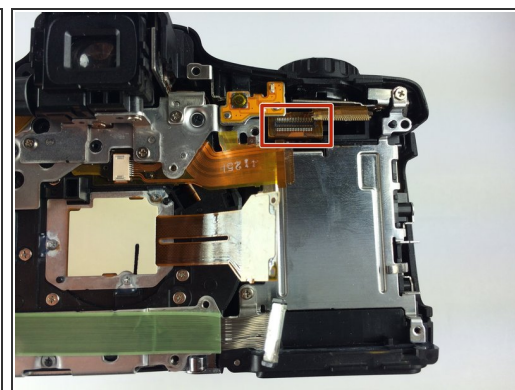
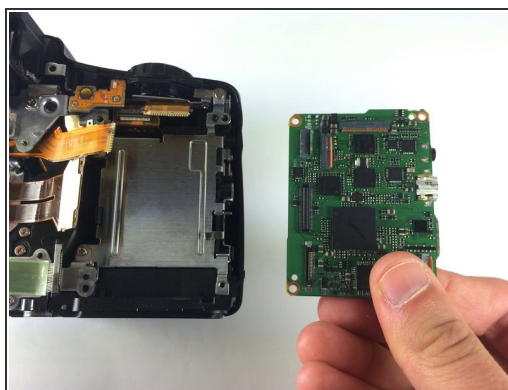
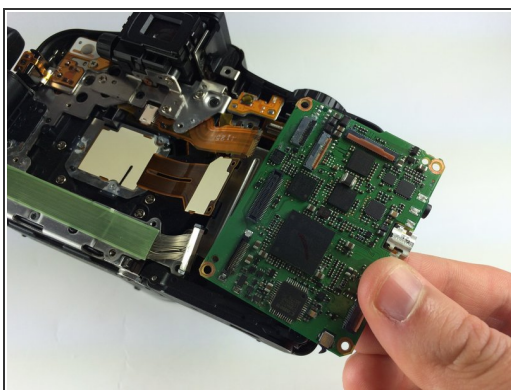
- Remove the two wire ribbons on the bottom left corner of the I/O board by unclipping them with your fingers.

## Step 14



- Lift up the wire ribbon that was attached at the top left corner of the I/O board; there is another wire ribbon underneath it.
- Detach this ribbon by lifting up the black latch and pulling it out with your fingers or the tweezers as you did with the ribbon on top of it.

## Step 15



- Carefully remove the I/O board from the camera. There is a wire ribbon attached underneath it that will detach as you pull the I/O board out.
  - This is the detached wire ribbon. You will need to reattach this when reassembling the camera.
- ⚠ Be very cautious when removing the I/O board; the wire ribbon underneath is very delicate.

To reassemble your device, follow these instructions in reverse order.