



Canon PowerShot SX530 HS Lens Replacement

Replace the lens of the camera.

Written By: Joel groff



INTRODUCTION

This guide shows how to replace the Lens of the Canon PowerShot SX 530 HS.

TOOLS:

- [Phillips #000 Screwdriver](#) (1)
 - [iFixit Opening Tools](#) (1)
 - [Tweezers](#) (1)
-

Step 1 — Battery



- Flip the camera upside down to find the battery compartment (marked CARD/ BATT. OPEN).
- Press into the grooves of the battery door and slide the panel in the direction of the arrow.

Step 2



- Gently press down on the orange release button found inside.
- After pressing the release button, pull the battery out of the camera.

Step 3 — Canon PowerShot SX530 HS Back Panel Assembly



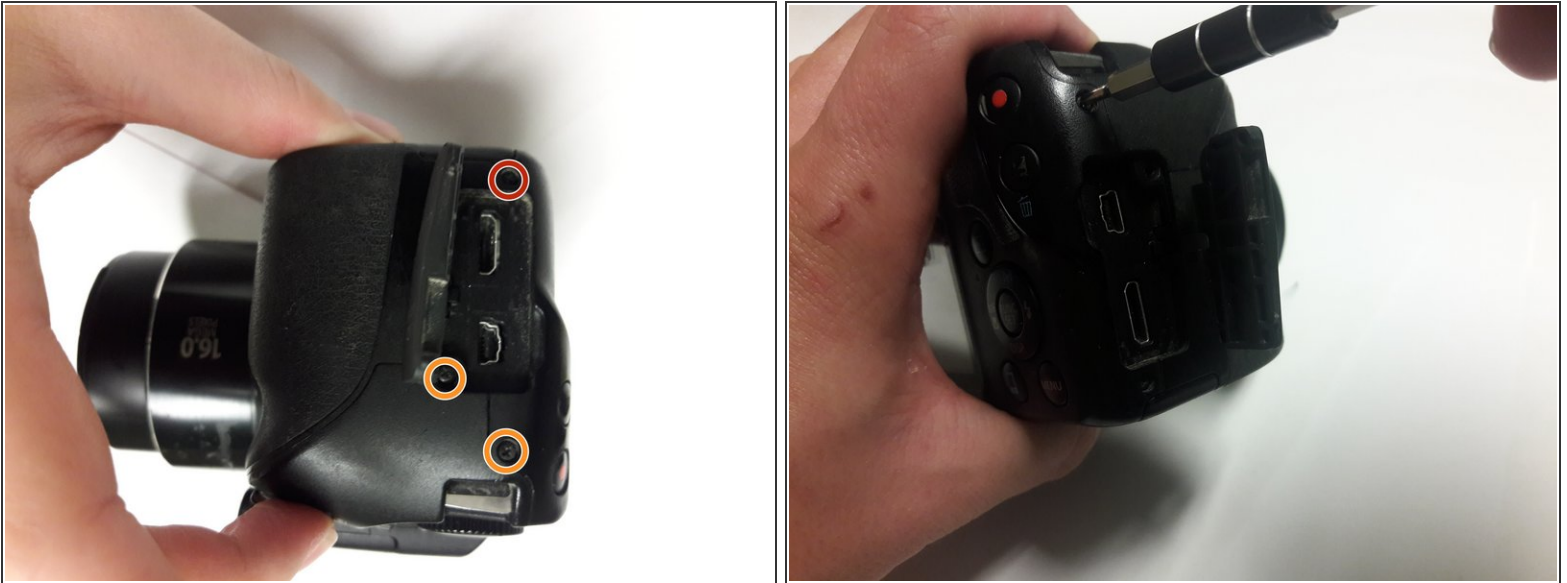
- Flip over the camera.
- Use a Phillips PH000 to remove the two 4mm screws near the center of the camera.
- Use a Phillips PH000 to remove the two 6mm screws on the ends of the camera.

Step 4



- Locate the left side of the camera.
- Use a Philips PH000 to remove the two 6mm screws.

Step 5



- Rotate the camera to the side with the removable cover containing the HDMI and mini USB ports.
- Use the Phillips PH000 to remove the 4mm screw located next to the HDMI port.
- Use the Phillips PH000 to remove the two 7mm screws near the USB port.

Step 6



- Rotate the camera to locate the side with the LCD screen.
- Use a Phillips PH000 to remove the two 6mm screws above the LCD screen.
- Once the screws are out the back panel, it is ready to be taken off. Grip the backside of the camera and pull it away evenly on every side. The backside must come off straight from the front.

Step 7 — Shutter Back Cover



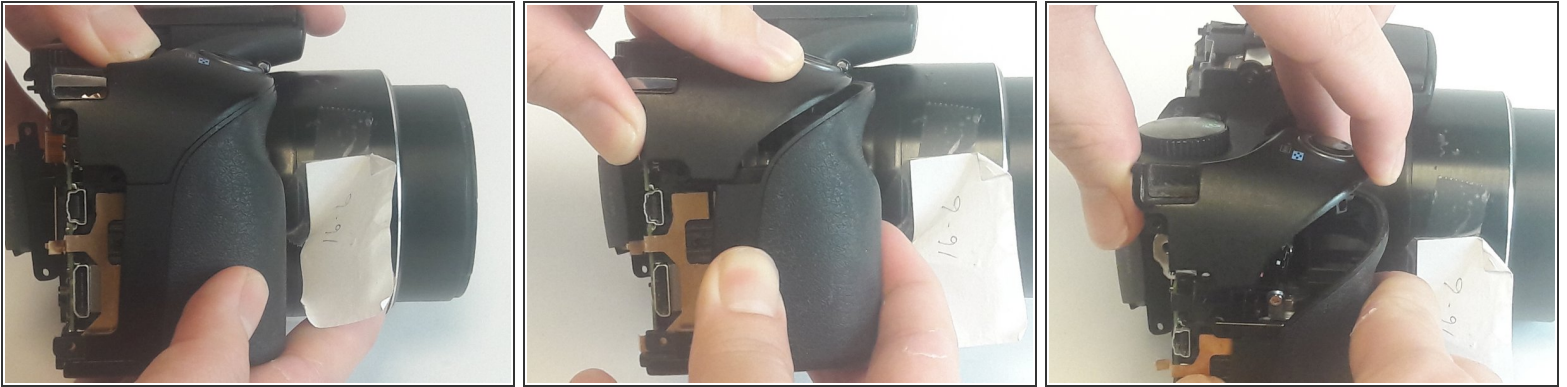
- Remove the two screws (5-6mm) on the left and right side of the shutter panel with a Phillips PH000 screwdriver.

Step 8




- Lift the shutter light and pull the shutter back panel off the camera.
- ⚠ Be careful when pulling out the panel because it is connected to the motherboard.

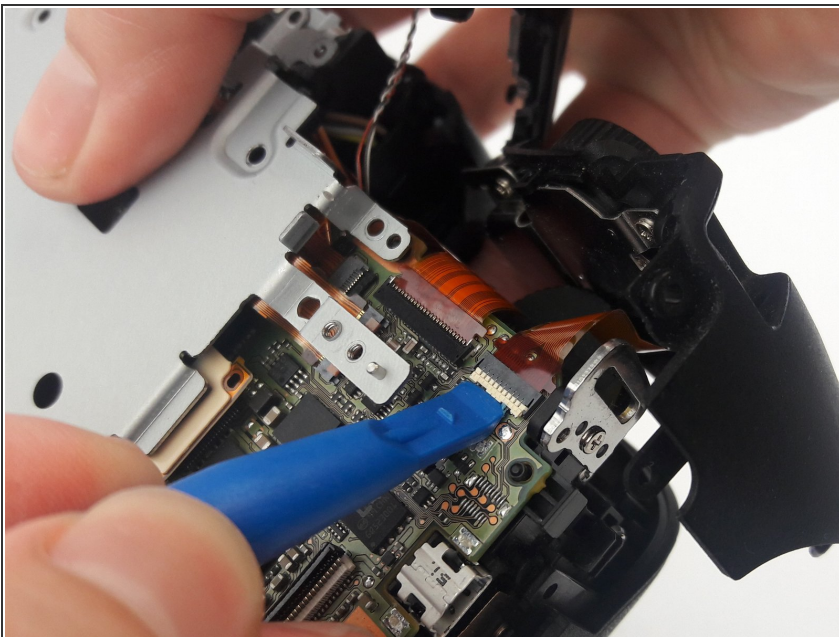
Step 9 — Shutter Release Cover



- Hold the camera by the bottom or place the camera on a firm flat surface and keep a firm grip on the device.
- Once a comfortable hold is established, gently pull the cover towards the rear of the camera. Then lift directly upwards on the cover to remove it.

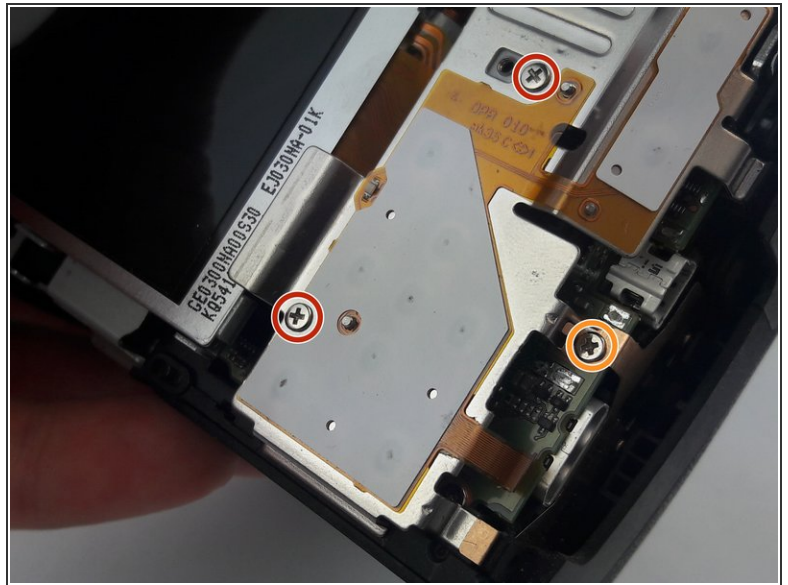
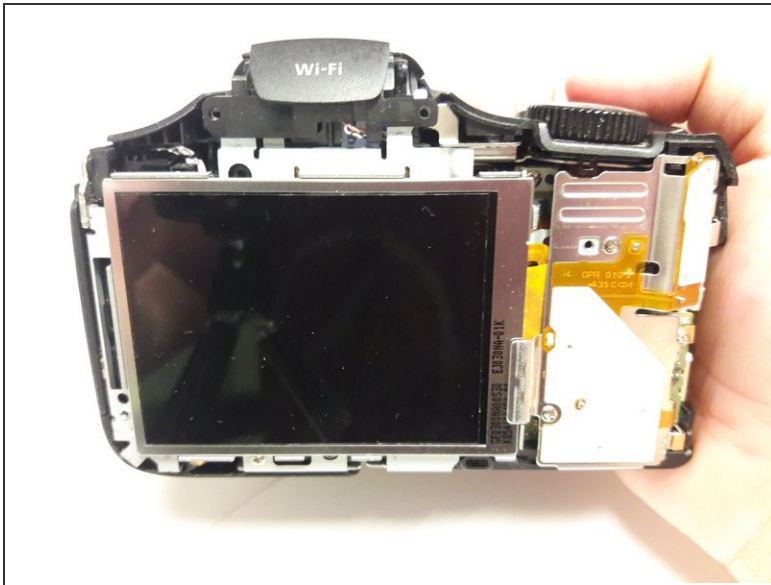
 Do not pull the cover off too hard to the point that you might accidentally tug on the ribbon tape.

Step 10



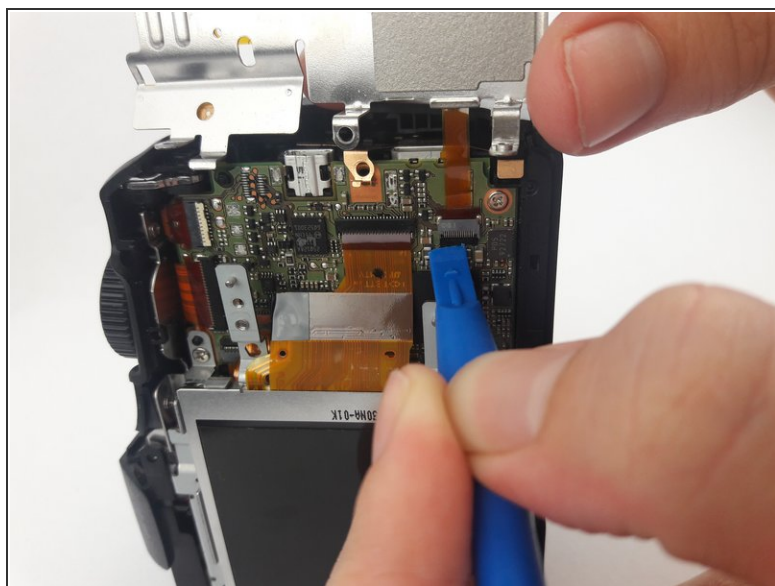
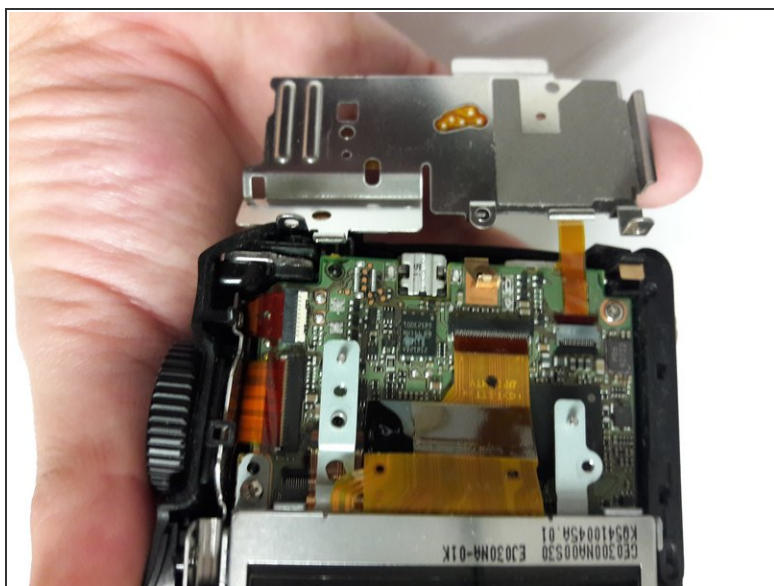
- Once the cover is loose from the device, use only a plastic opening tool to release the the ribbon tape from the motherboard.

Step 11 — Internal Button Sensor Plate



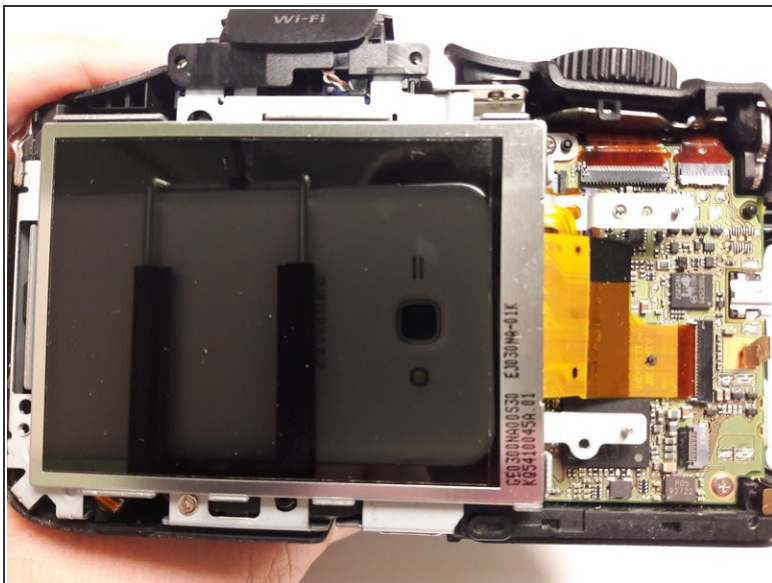
- Locate the Internal Button Sensor Plate. This is the white and silver plate to the right of the LCD Display.
- Use a Phillips PH000 to remove the two 3mm screws on the panel.
- Use a Phillips PH000 to remove the 3mm screw connected to the motherboard.

Step 12



- Peel off the plate. Be careful, as the plate is connected to the motherboard underneath by a ribbon.
- Use a plastic opening tool to pop the electrical ribbon out from the ribbon slot.

Step 13 — LCD Display



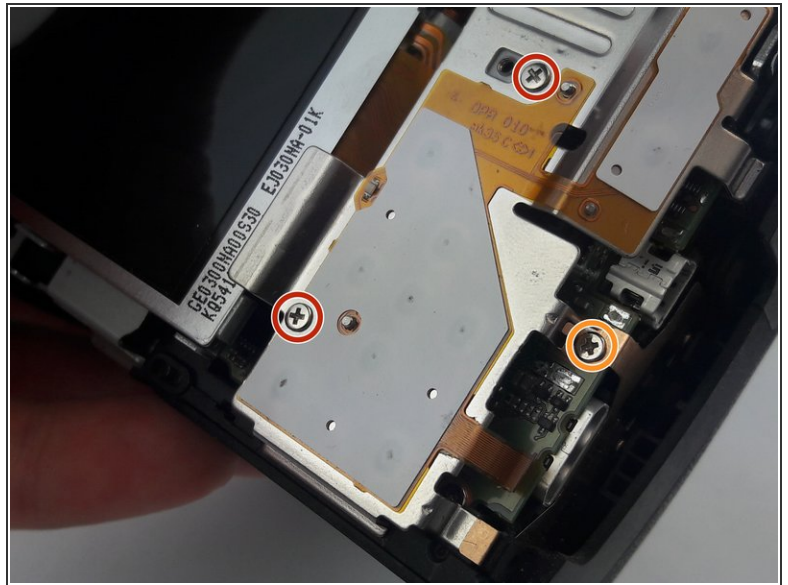
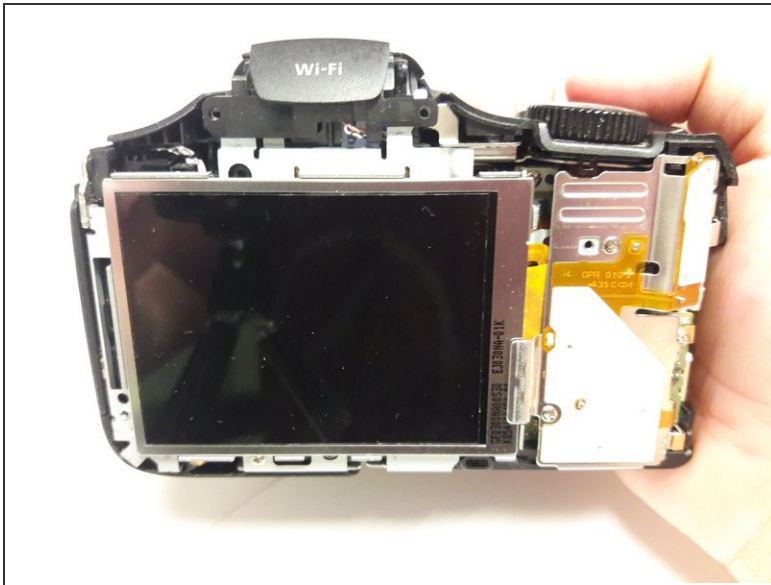
- Locate the Display screen in the center of the camera.
 - Use a plastic opening tool to pry off the LCD screen. Start on the bottom left corner—this is the furthest away from the ribbon holding it down on the right side.
- ☑ The adhesive holding down the display should be strong enough to put the display back on.

Step 14



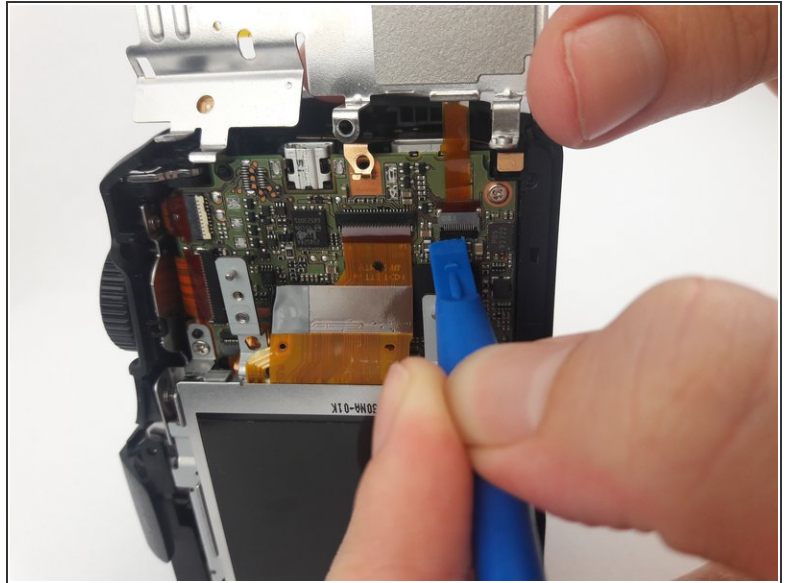
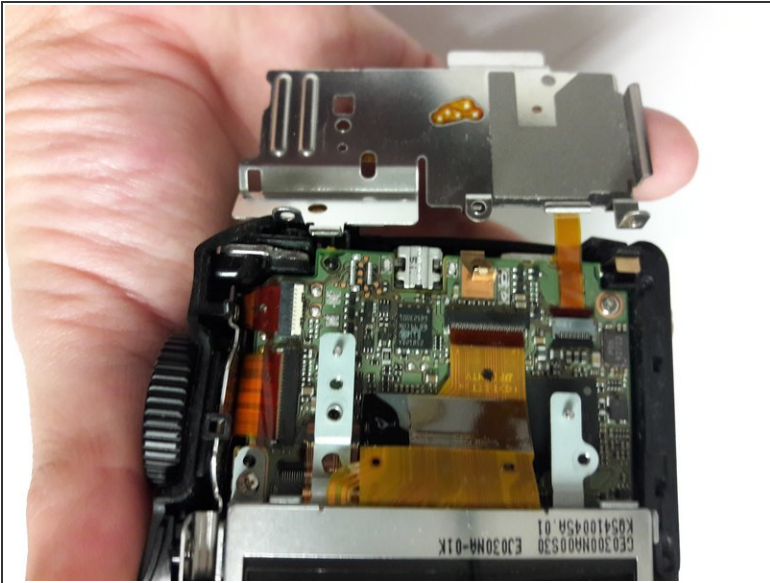
- Use a plastic opening tool to pry off the electrical ribbon connecting the LCD display to the motherboard.

Step 15 — Internal Button Sensor Plate



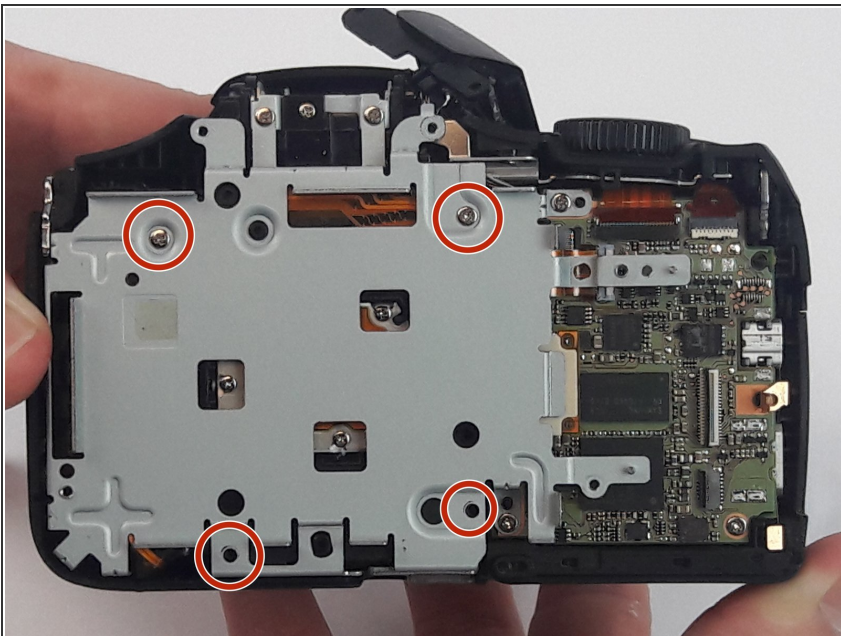
- Locate the Internal Button Sensor Plate. This is the white and silver plate to the right of the LCD Display.
- Use a Phillips PH000 to remove the two 3mm screws on the panel.
- Use a Phillips PH000 to remove the 3mm screw connected to the motherboard.

Step 16



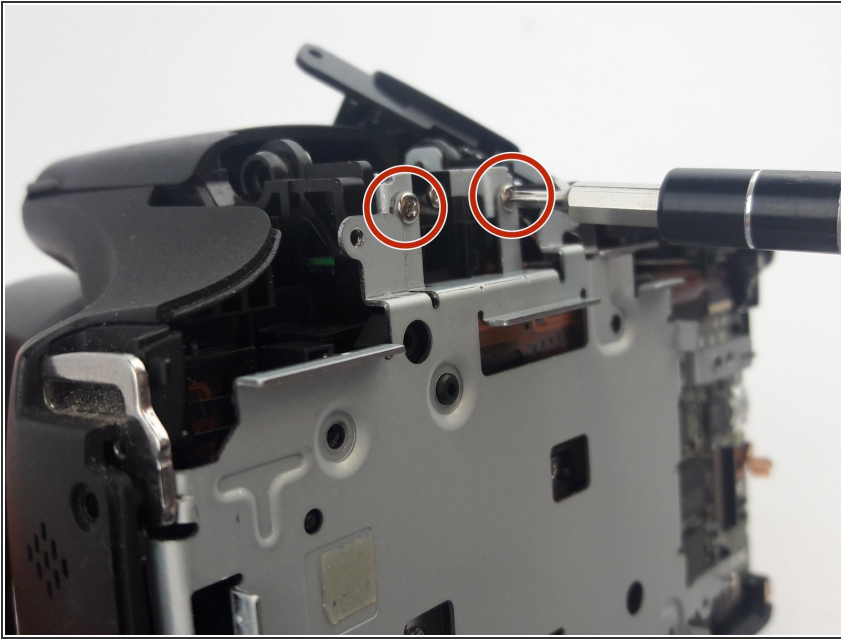
- Peel off the plate. Be careful, as the plate is connected to the motherboard underneath by a ribbon.
- Use a plastic opening tool to pop the electrical ribbon out from the ribbon slot.

Step 17 — Internal Metal Frame



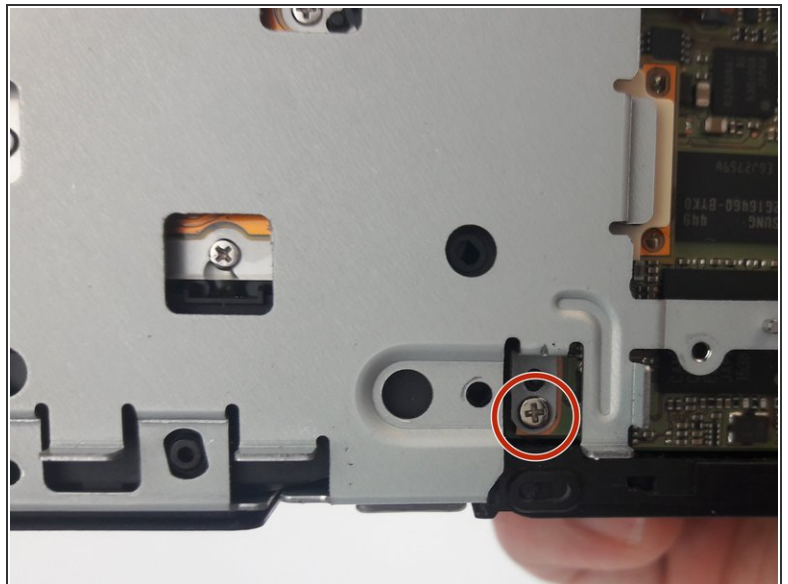
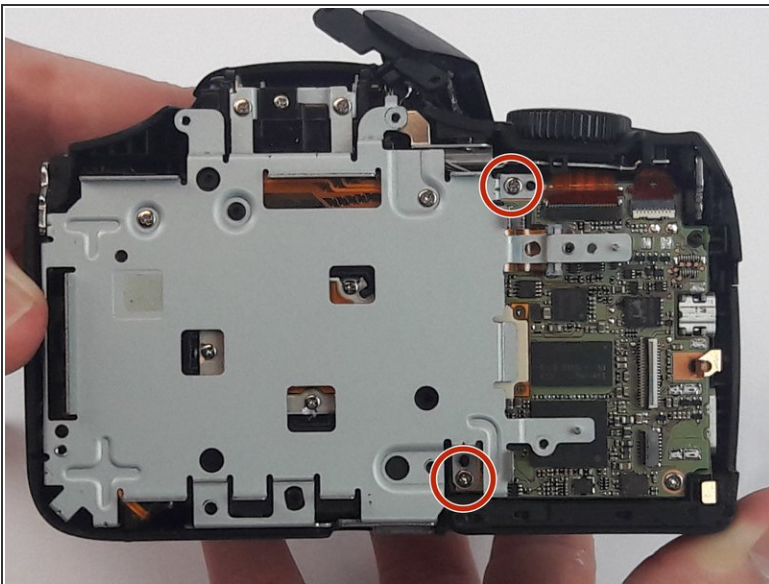
- Use a PH000 screwdriver to remove the four 3.5 mm screws holding the plate in place.

Step 18



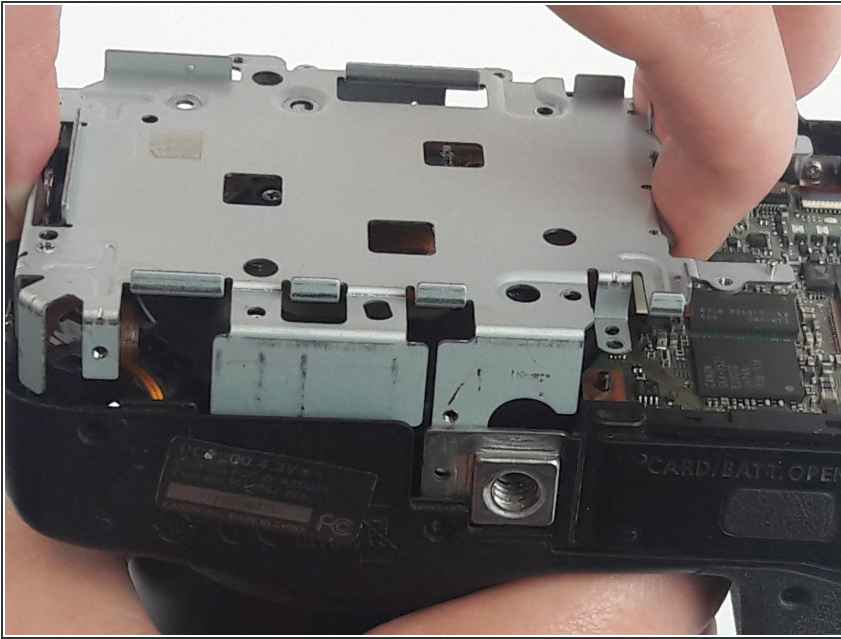
- Use a PH000 screwdriver to remove the two 2.5 mm screws on the top of the plate.

Step 19



- Use a PH000 screwdriver to remove the two 4.5 mm screws connecting the plate to the motherboard.

Step 20



- Gently pull the plate away from the camera. Part of the plate extends inside the camera beneath the shutter, so be sure to not angle the plate as you pull.

Step 21 — Lens



- Use tweezers to pull the large ribbon cable connecting the back of the lens to the motherboard.

Step 22



- Pull the small ribbon cable off the motherboard with a plastic opening tool.

Step 23



- Pull the lens partly away from the camera to reveal another ribbon cable connecting the lens to the motherboard.
- Pull the ribbon cable off the motherboard using a plastic opening tool.

Step 24



- Pull the lens, the entire piece to the left of the motherboard, out of the camera.

To reassemble your device, follow these instructions in reverse order.