



# Canon PowerShot SX60 HS Back Panel Replacement

This guide will teach you how to replace the back panel on the Canon PowerShot SX60 HS. It is a prerequisite for many of the other guides.

Written By: Ethan Boone



## INTRODUCTION

The removal of the back panel is necessary for almost all of the repairs for the Canon PowerShot SX60 HS.

The back panel protects the internal components and sensitive electronics in the device from the elements and minor damages.

---

### TOOLS:

- [iFixit Opening Tools](#) (1)
  - [Nylon Tipped Tweezers](#) (1)
  - [Phillips #00 Screwdriver](#) (1)
  - [Spudger](#) (1)
-

## Step 1 — Back Panel



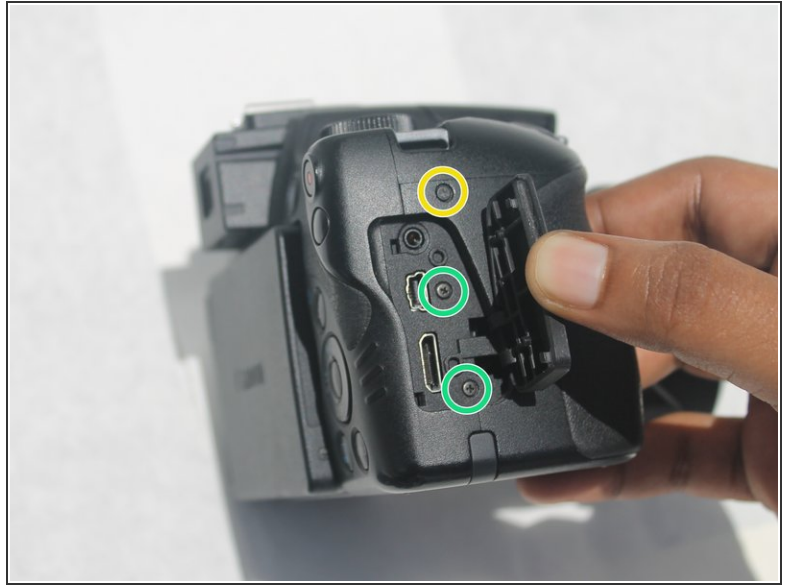
- Make sure to power off the device before completing any more steps.
- Remove the battery by releasing the orange clip in the battery compartment.

## Step 2



- Remove the rubber eye piece by pulling it back.
- Use the Phillips #00 screwdriver to remove the two 5mm #00 screws located on the side of the viewfinder.

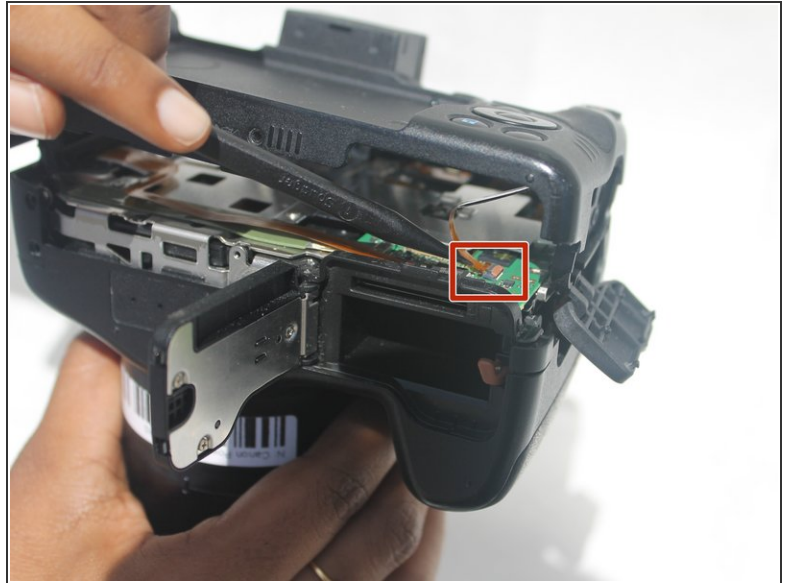
## Step 3



- Use the Phillips #00 screwdriver to remove the 4mm #00 screw located on the bottom left of the device.
- Use the Phillips #00 screwdriver to remove the 5mm #00 screw located on the bottom center of the device.
- Use the Phillips #00 screwdriver to remove the 7mm #00 screw on the right top corner of the camera, just above the media ports.
- Use the Phillips #00 screwdriver to remove the two 5mm #00 screws located on the right side, under the media port dust cover.



## Step 4



- ❗ Ensure the LCD screen is swung fully to the left before taking off the back panel.
- Use the iFixit opening tool to pry off the back panel.
- ❗ Don't completely pull off the back panel because there is still a ribbon attached.
- Use the black spudger to unclip the ribbon located behind the battery compartment. Then remove it using the nylon tipped tweezers.
- Once the ribbon is unplugged, remove the back panel from the camera body.

To reassemble your device, follow these instructions in reverse order.