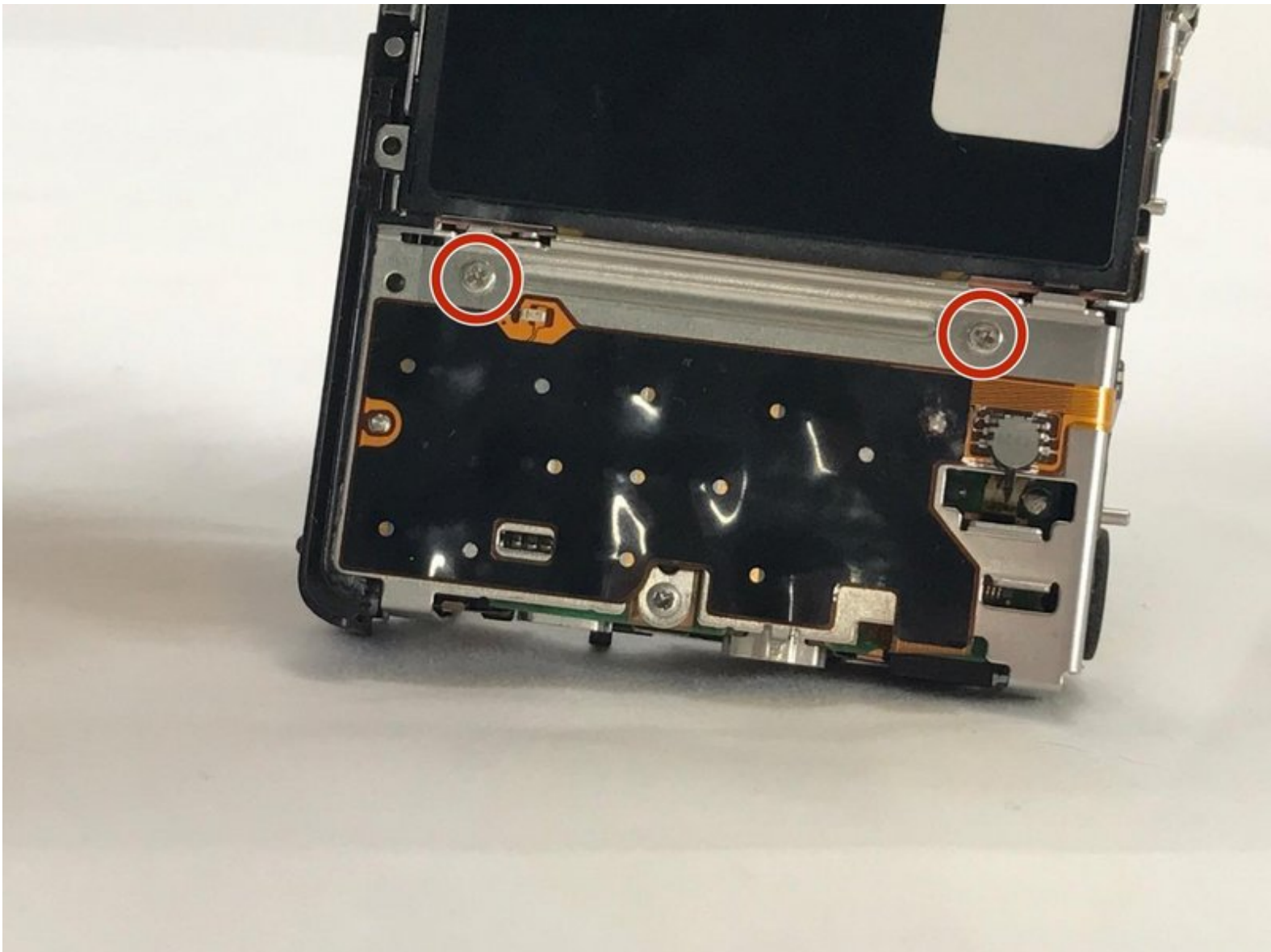




Canon PowerShot SX600 HS Display Screen Replacement

This will assist in the replacement of the Display Screen in the Canon PowerShot SX600 HS. How to properly be able to take it out and change it.

Written By: Jennyfer Munoz



INTRODUCTION

Canon PowerShot SX600 HS camera, can have a broken or damaged screen/LCD. The screen can be noted to have cracks or the LCD does not allow the screen to display, either or calls for a replacement of the display screen. Use this guide when replacing the display screen or LCD for your camera.



TOOLS:

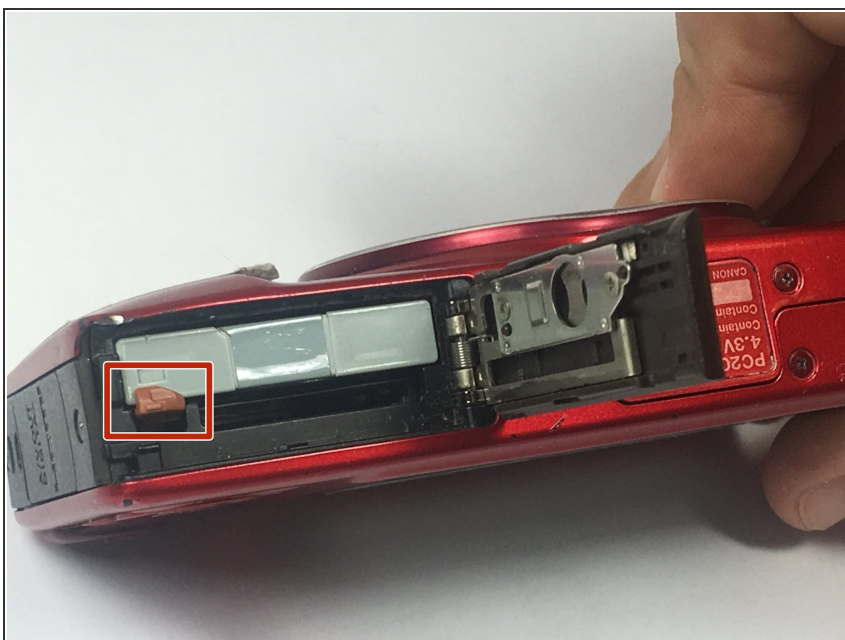
- [Phillips #000 Screwdriver](#) (1)
 - [iFixit Opening Tools](#) (1)
 - [ESD Safe Tweezers Blunt Nose](#) (1)
-

Step 1 — Battery



- To remove the battery, locate the battery cover on the bottom of the camera.
- Using your thumb, press down on the cover and slide it outwards.

Step 2



- Depress the orange lever holding the battery in place to unlock it.

Step 3



- Use your fingers to remove the battery.
- ☑ Be sure to remember the alignment of the nodes for reassembly.

Step 4 — Power and Shutter Buttons



- Use a #000 Phillips screwdriver to unscrew the four 4mm screws located on the sides of the camera (2 for each side).

Step 5



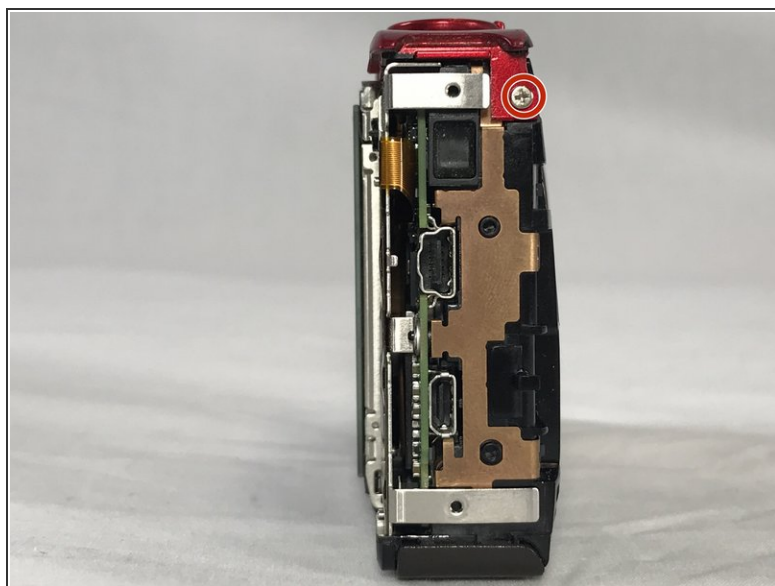
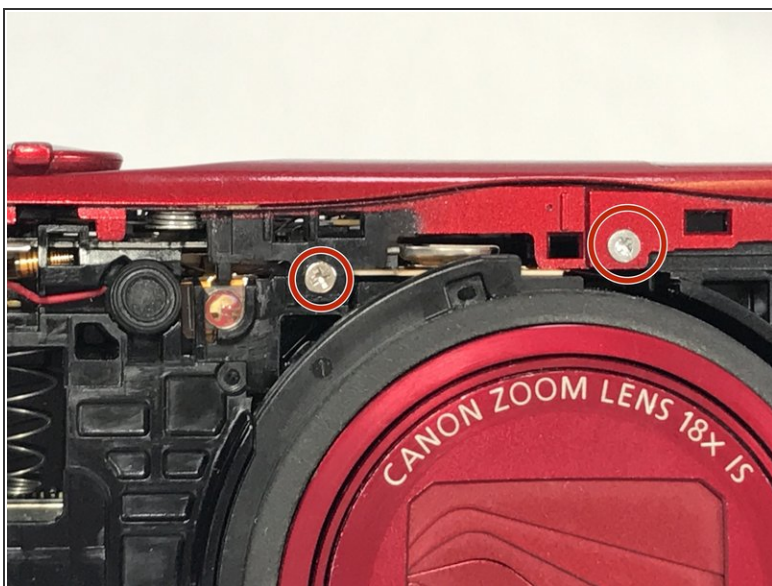
- Unscrew the four 2mm located on the bottom of the camera using a Phillips #000 screwdriver.

Step 6



- Use a plastic opening tool to loosen and remove both the front and back plates of the camera, as well as the two side pieces.

Step 7



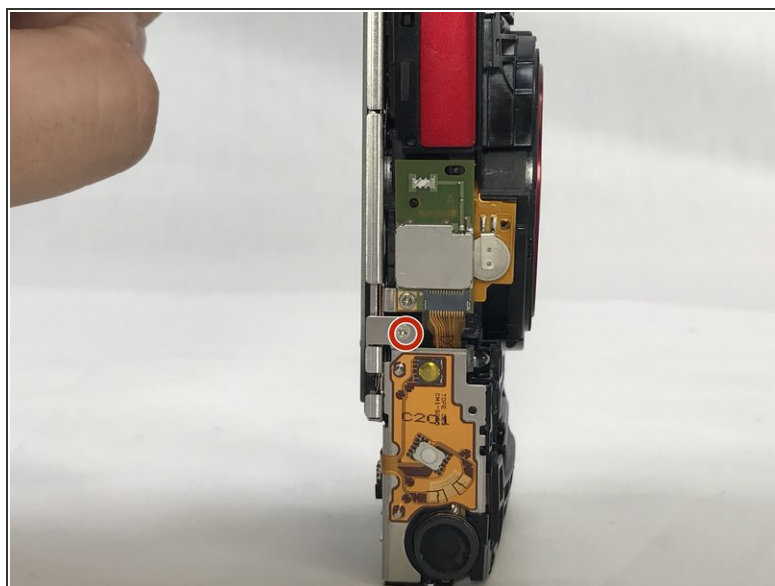
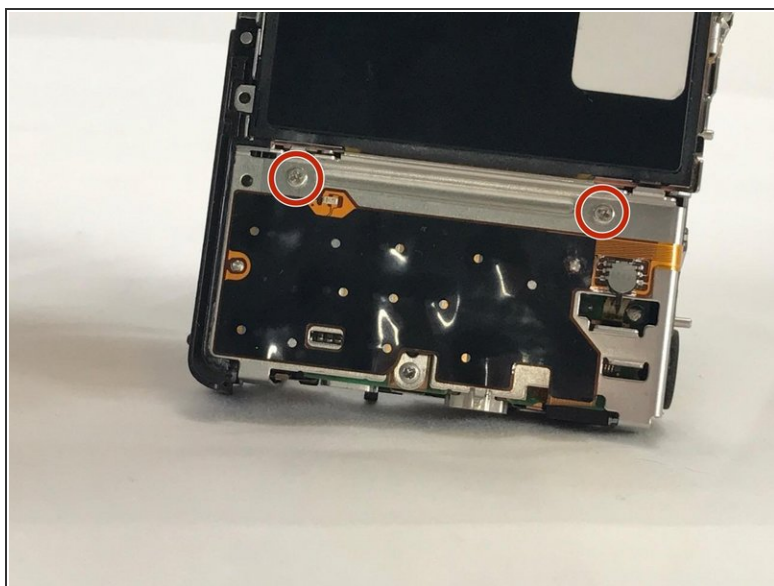
- Unscrew the three 2mm screws attaching the piece to the camera frame with a #000 Phillips screwdriver.

Step 8



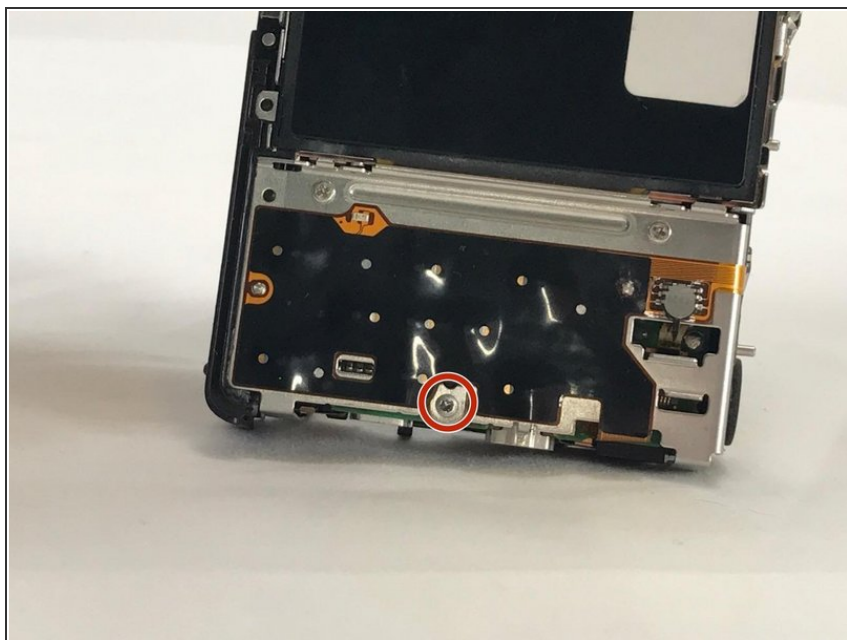
- Use an opening tool to gently remove the power and shutter button assembly from the frame.

Step 9 — Display Screen



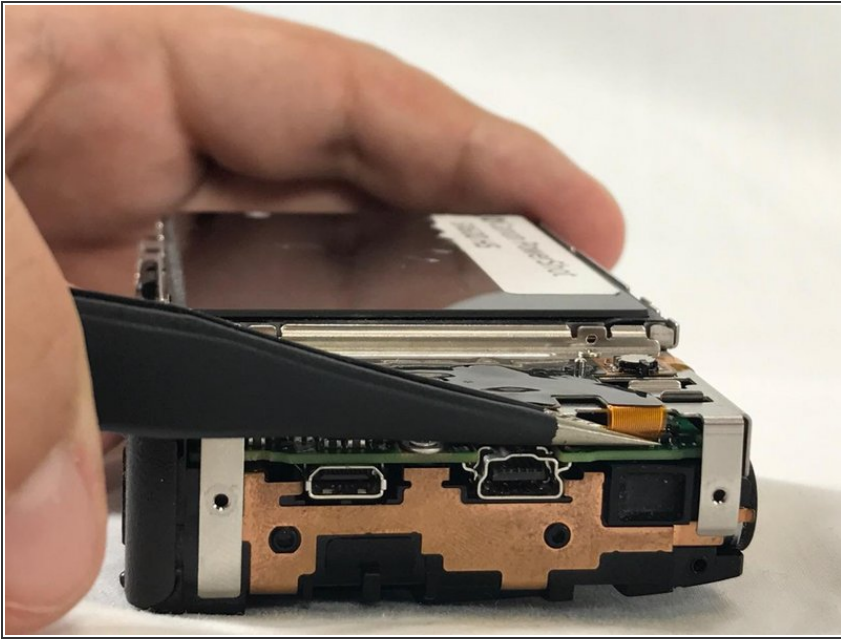
- Unscrew the 2mm screw connections of the main board protector from the camera frame using a #000 Phillips head screwdriver (2 on front, 1 on top)

Step 10



- Use a Phillips #000 screwdriver to unscrew the 4mm screw.

Step 11



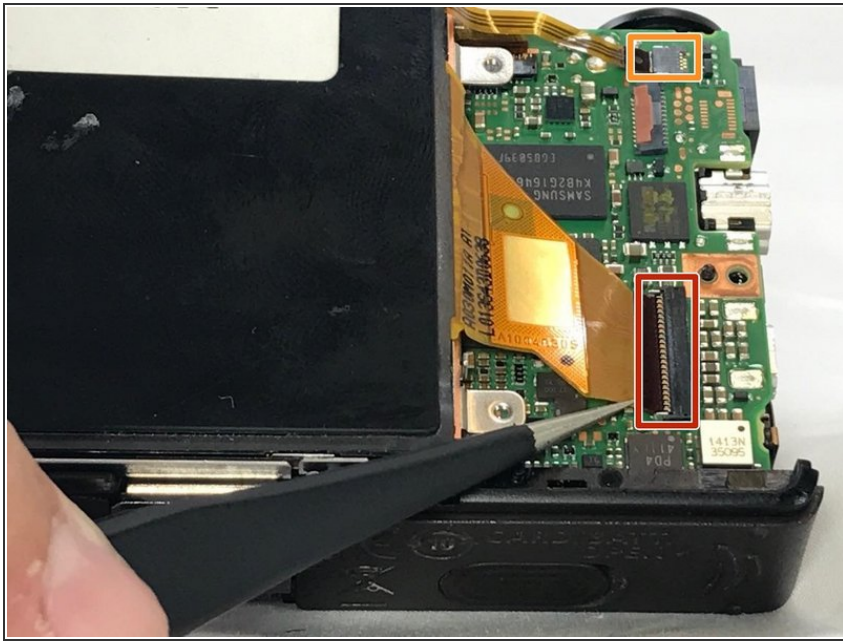
- Use a pair of tweezers to remove the no-fuss connector from its holder.

Step 12



- Gently lift the protector from the frame.

Step 13



- Lift the LCD screen ZIF connector tab and remove the ribbon cable.
- Detach the no-fuss connector.
- Lift the screen from its holder.

To reassemble your device, follow these instructions in reverse order.