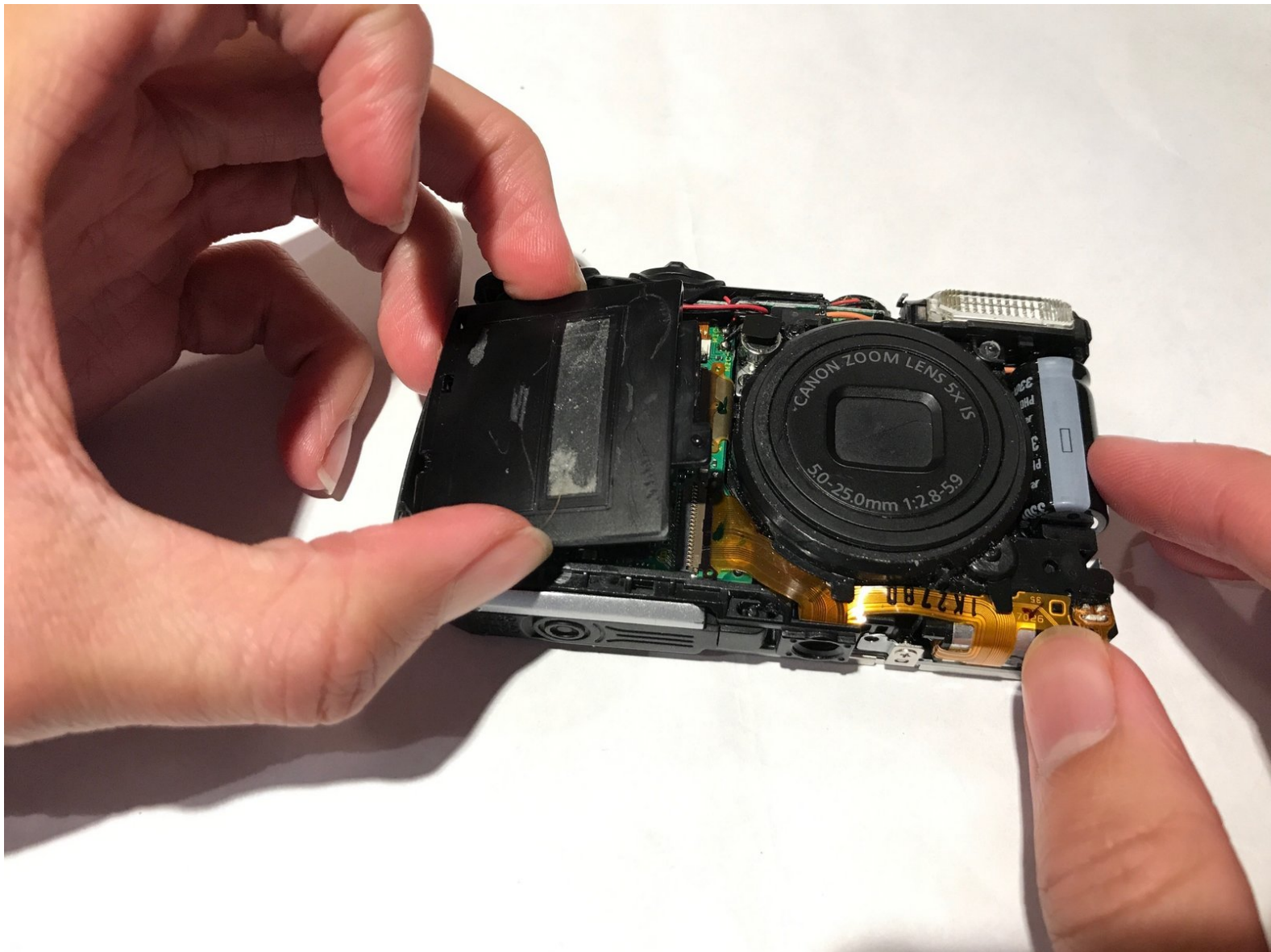




# Canon Powershot A3300 IS Motherboard Replacement

How to replace the motherboard in the Canon Powershot A3300 IS.

Written By: Phillip Chen



# INTRODUCTION

This guide will show you how to replace the motherboard in your computer if it is broken or malfunctioning. In this guide you will be dealing with fragile parts, to avoid further damage handle all parts with care.



## TOOLS:

- [JIS #000 Screwdriver](#) (1)
  - [Tweezers](#) (1)
-

## Step 1 — Back Cover



- Remove four 2.7 mm screws, two on each side, from the camera with a JIS 000 screwdriver.
  - Remove one 3.5 mm screw on the bottom of the camera with a JIS 000 screwdriver.
- i** When removing the front and back housings, be careful to not break the tabs that hook into the top section of the chassis.

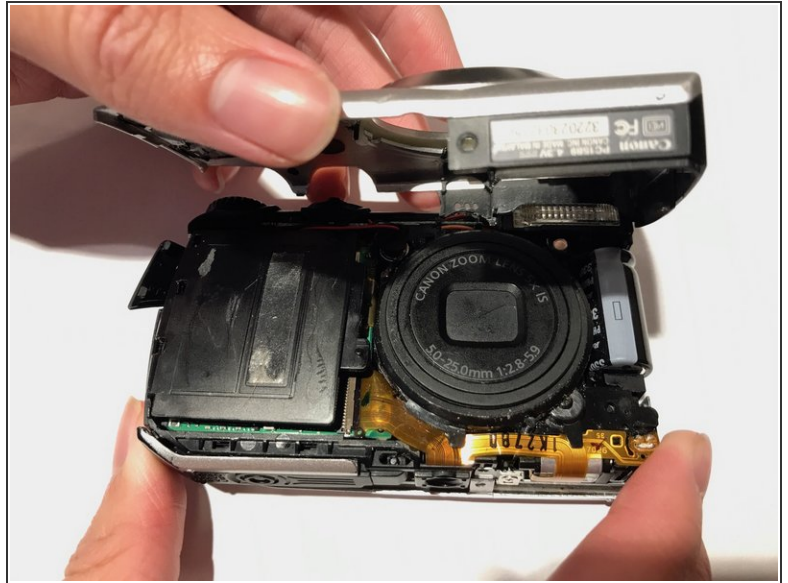
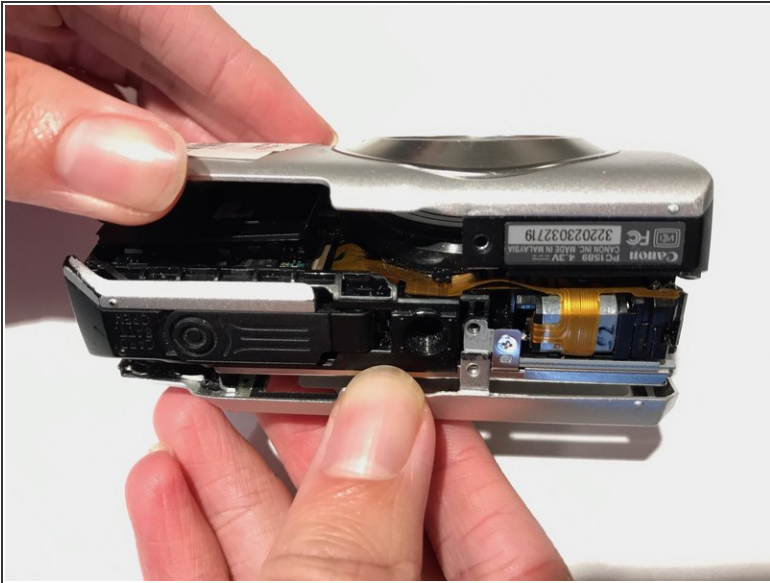
## Step 2



- Pull off the back cover.

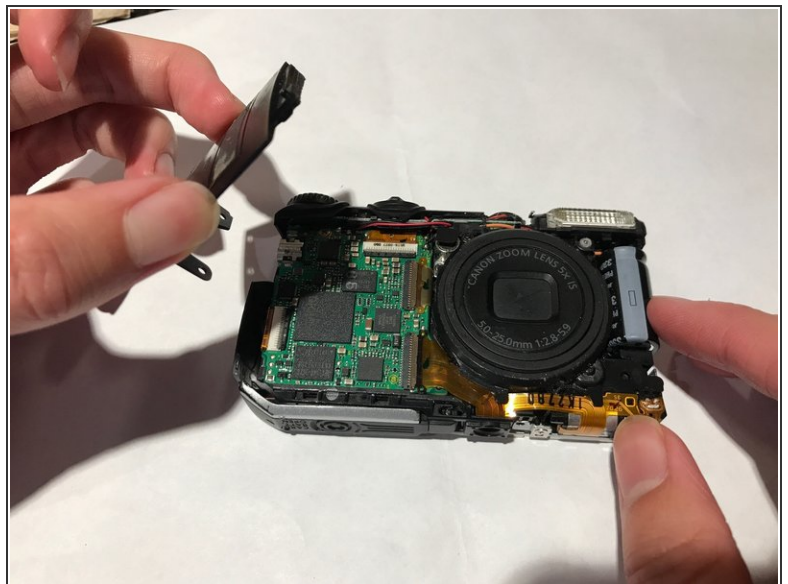
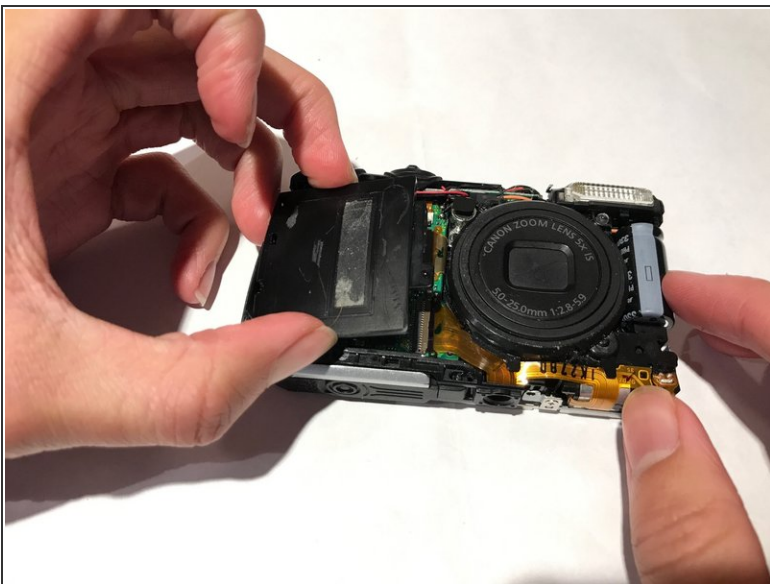


### Step 3 — Front Cover



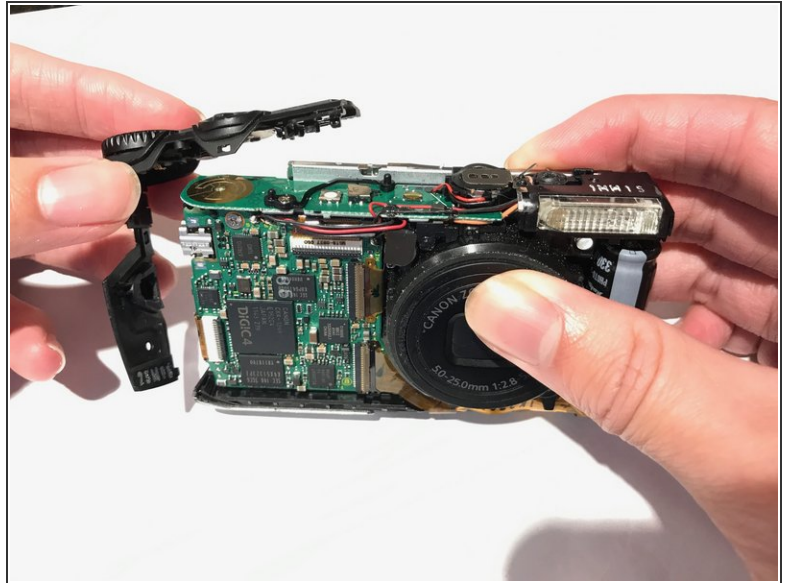
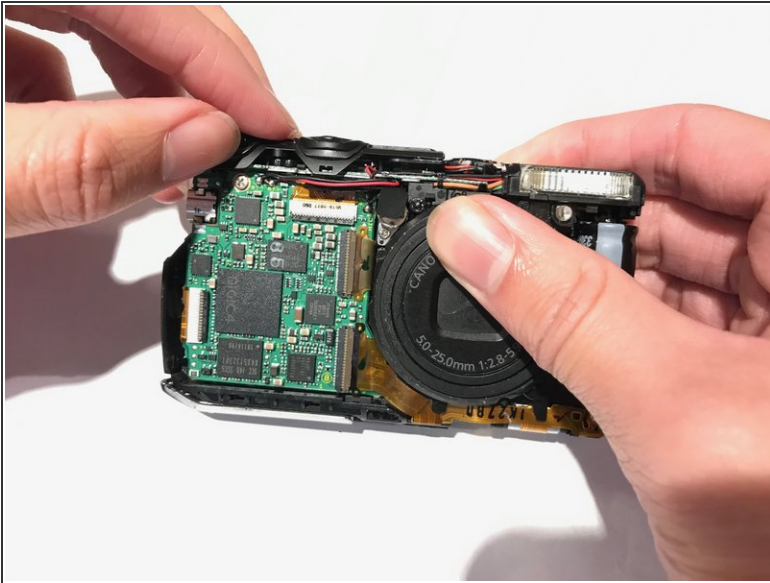
- Pull the front cover off.

### Step 4 — Motherboard



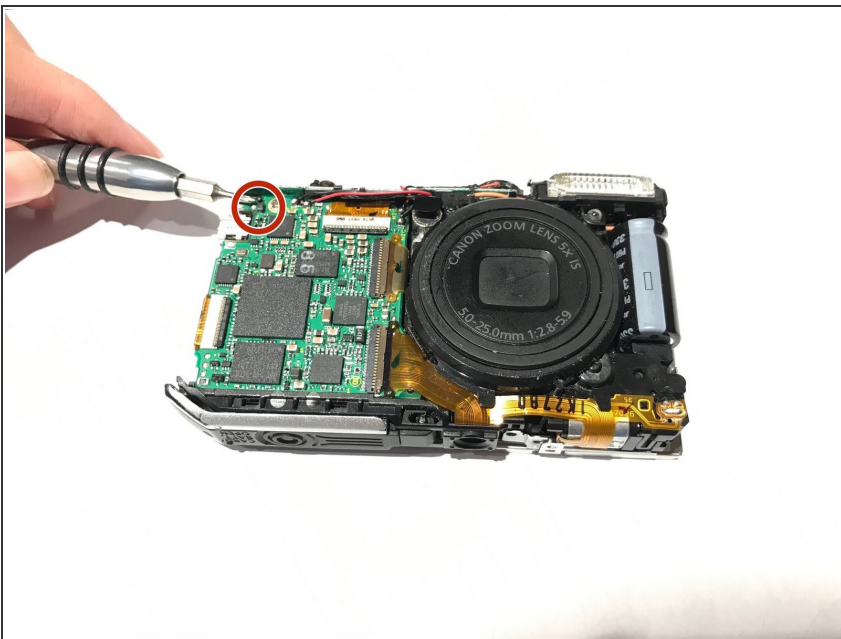
- Remove the black cover to expose the motherboard.

## Step 5



- Remove the shutter button located at the top left of the camera.
- This will expose the screws that need to be removed.

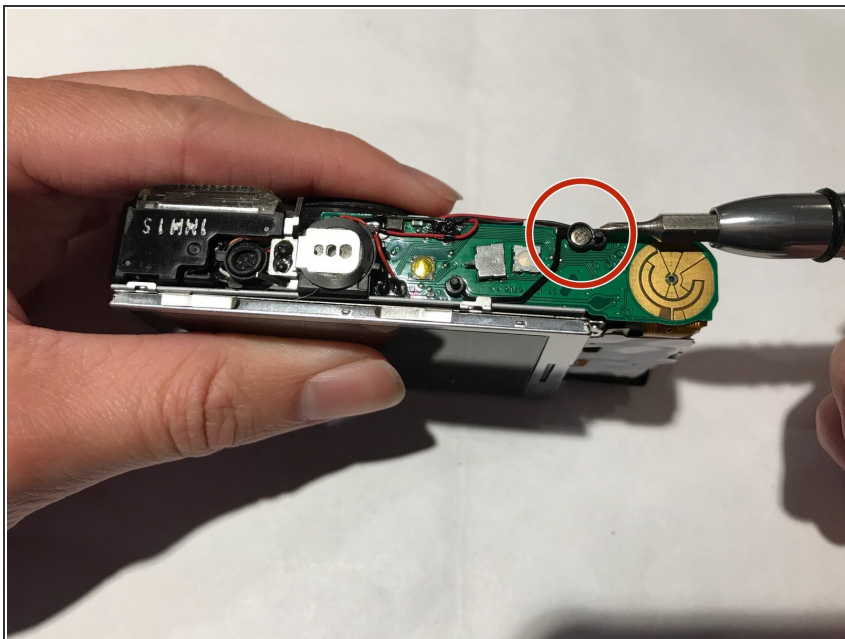
## Step 6



- Using a JIS 000 screwdriver, remove the 1.2mm screw at the top left of the motherboard.

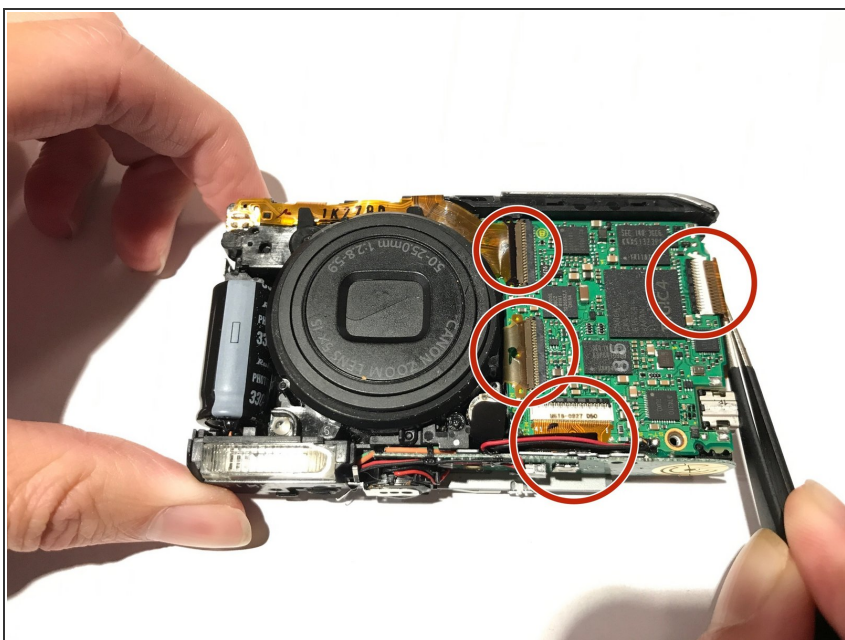


## Step 7



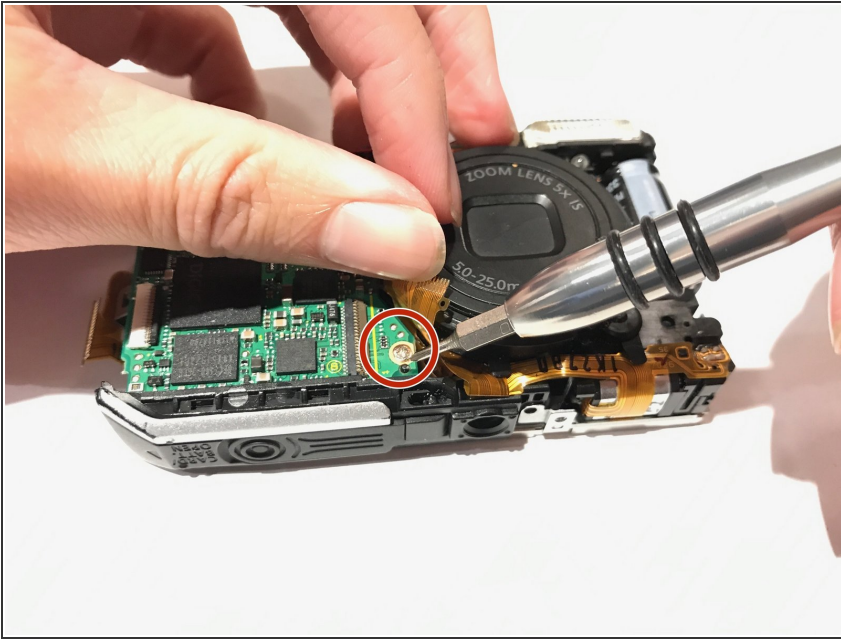
- Remove the 1.6mm screw at the top of the camera.

## Step 8



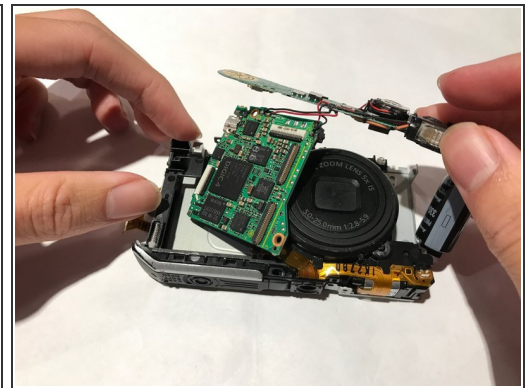
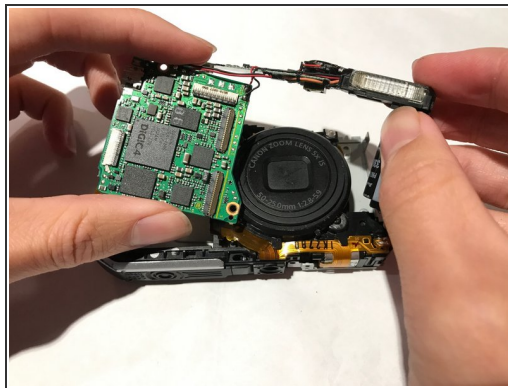
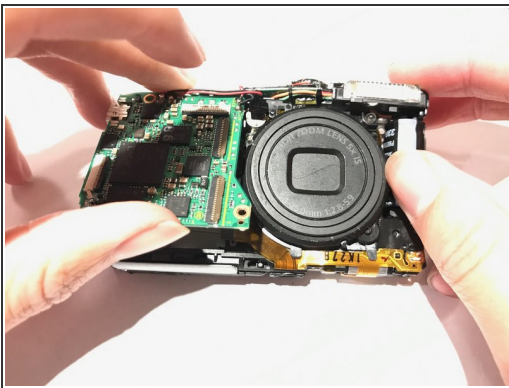
- Use tweezers to pull out brown flat flexible wires from their connection.
- ⓘ Remember to gently wiggle the wires from the connection since they are very fragile connectors.

## Step 9



- Remove the last 1.2mm screw to pull out the motherboard.
- The motherboard should freely separate from the housing.

## Step 10



- Remove motherboard and replace with a new one.

To reassemble your device, follow these instructions in reverse order.