



Canon Powershot A610 Speaker Replacement

This guide will allow you to replace any broken or damaged speaker on your camera.

Written By: Matthew Ramirez



INTRODUCTION

The speaker is on the underside of the top casing and will involve some minor technical skills.



TOOLS:

- [Phillips #00 Screwdriver](#) (1)
 - [Spudger](#) (1)
-

Step 1 — Speaker



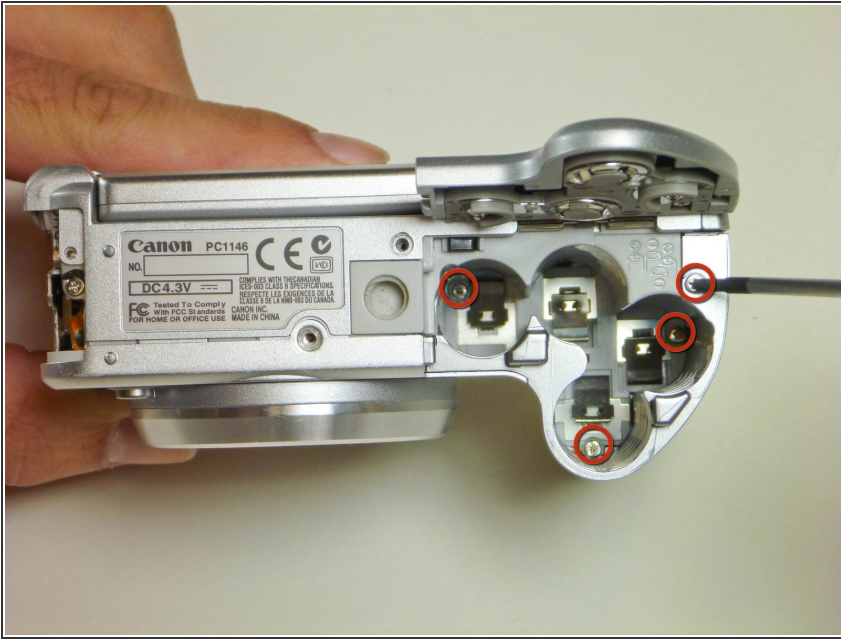
- Locate and remove the three screws attaching the side panel.
- Remove the side paneling and the two remaining screws attached to the frame of the camera.

Step 2



- Remove the two screws on the bottom panel of the camera.

Step 3



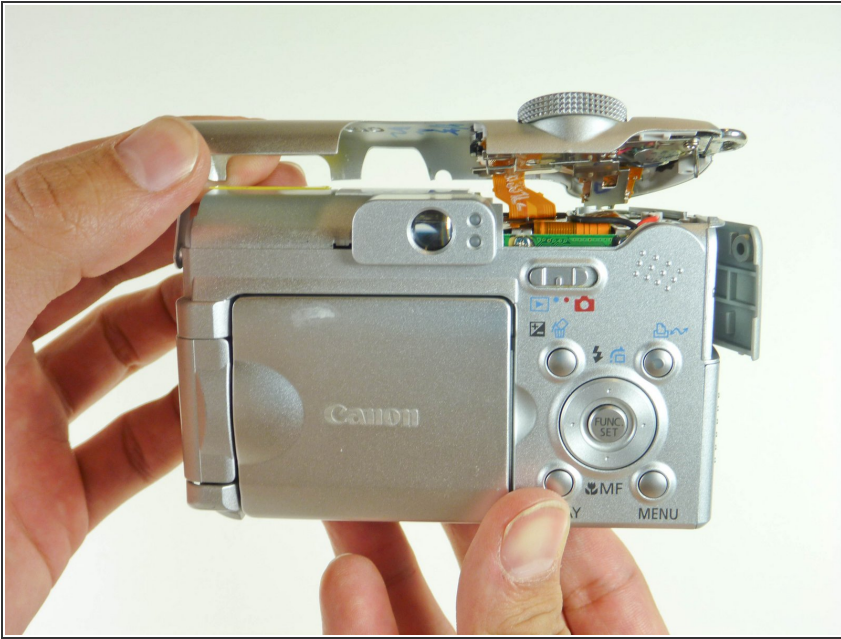
- Open the battery cover.
- Locate and remove the four screws inside.
- One screw is located on the top side of the bottom cover. The remaining three screws are located at the bottom of the battery compartment.
- Close the battery cover.

Step 4



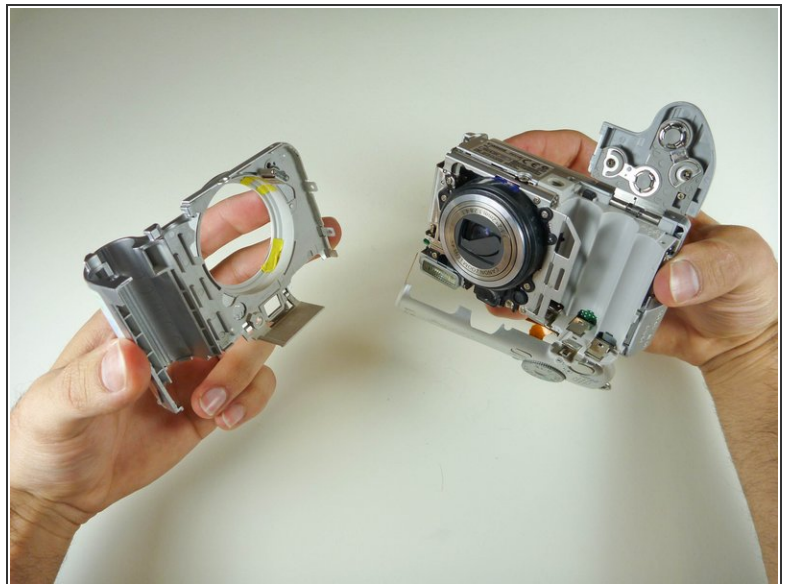
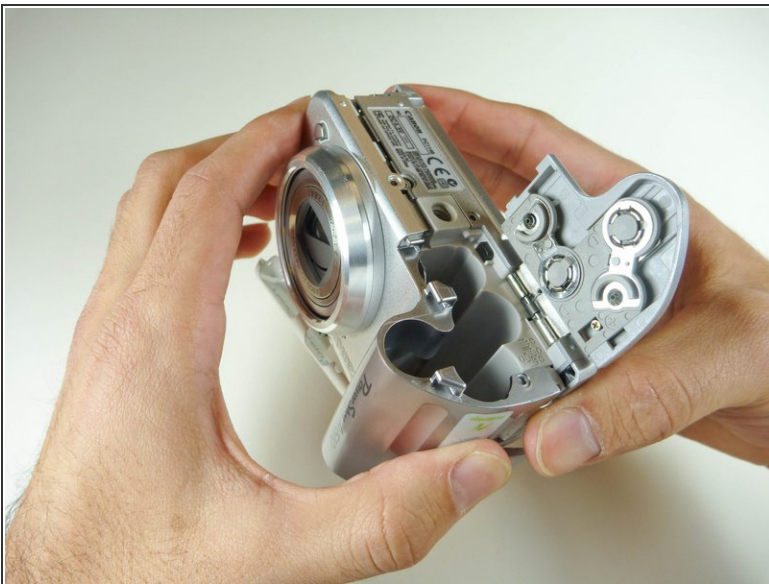
- Open the "DIGITAL AV OUT" door on the camera.
- Remove the three screws. The door can be removed from the camera.

Step 5



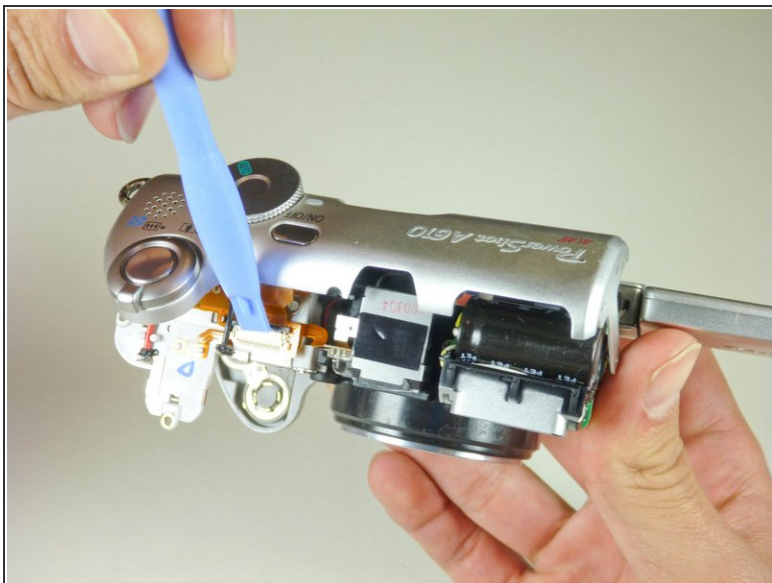
- Gripping the sides of the top cover, gently pull apart the top cover from the camera.
- ⓘ The top cover does not completely detach.

Step 6



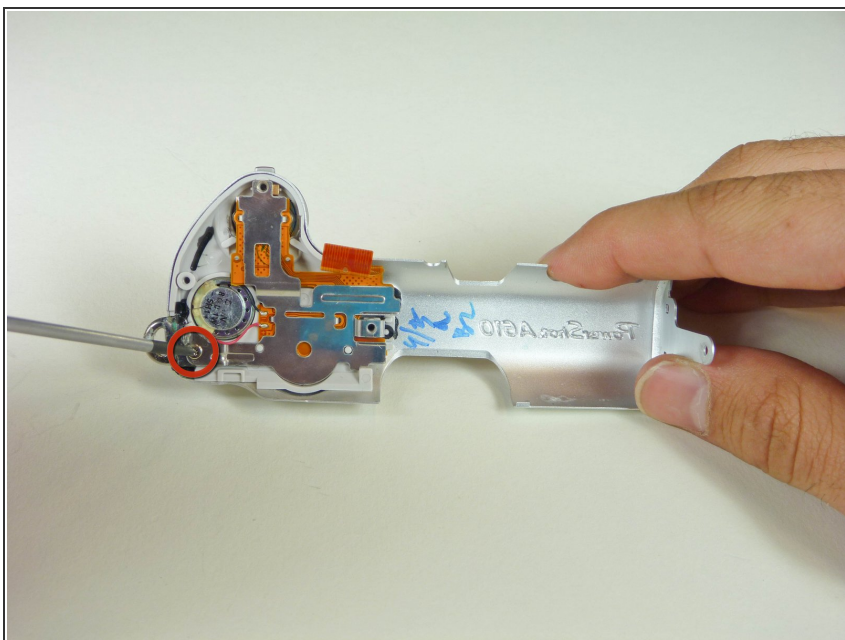
- Open the battery cover.
- Gently pull apart the front cover from the camera.
- ⓘ This may require some force. Be careful not to break the plastic.

Step 7



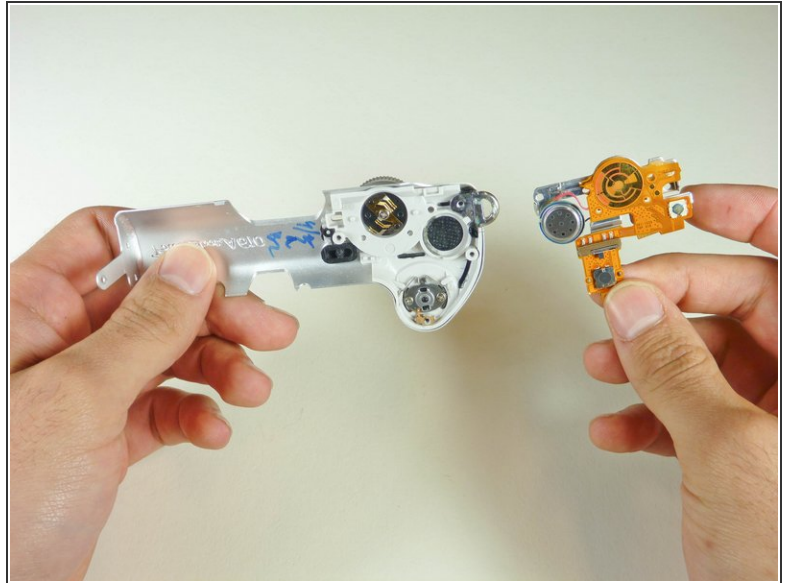
- Using a thin tool, push the black attachment away from the white connection piece to detach the connector ribbon.

Step 8



- Remove the 3mm screw holding the metal frame.

Step 9



- Use an unfolded paper clip to push the speaker from the top of the casing out towards the bottom.
- You may need to use a bit of force as the speaker be glued in to the top casing.
- ⓘ There is a soft fabric speaker cover separating the speaker from the casing. Make sure not to remove it from its position in the housing.

Step 10



- Unsolder the speaker at two points and reattach the new speaker.

To reassemble your device, follow these instructions in reverse order.