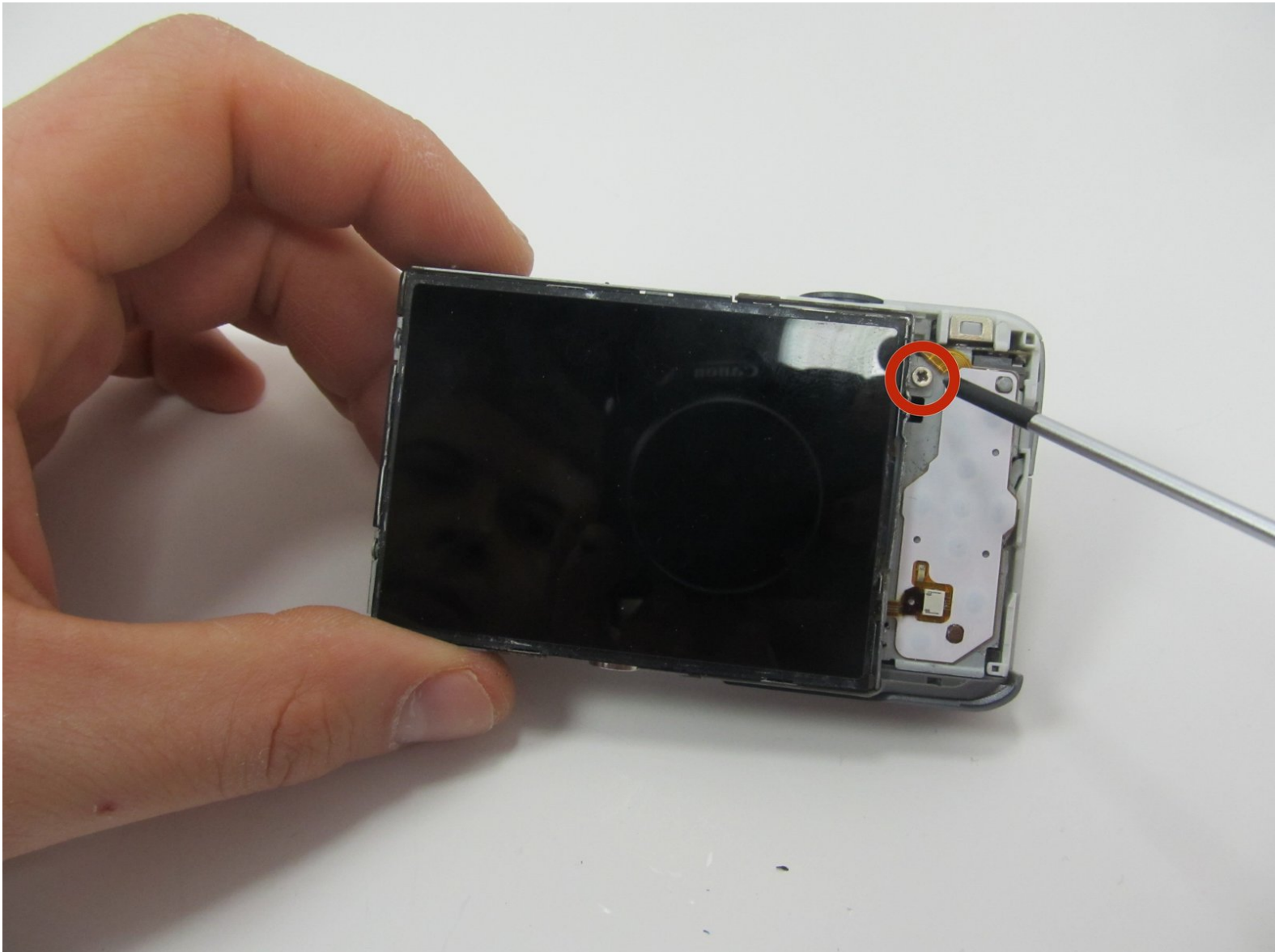




Canon Powershot ELPH 100 HS LCD Display Replacement

This guide will teach you how to replace a damaged LCD screen.

Written By: Jacob



INTRODUCTION

A common issue with this camera is a cracked display screen or the screen not showing the picture, meaning it is damaged. This guide will walk you through the process of replacing the screen.



TOOLS:

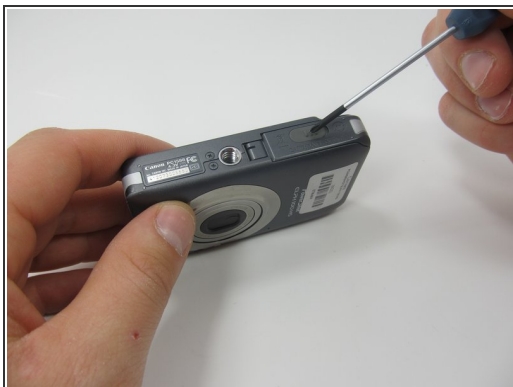
- [Phillips #00 Screwdriver](#) (1)
- [Spudger](#) (1)
- [Tweezers](#) (1)



PARTS:

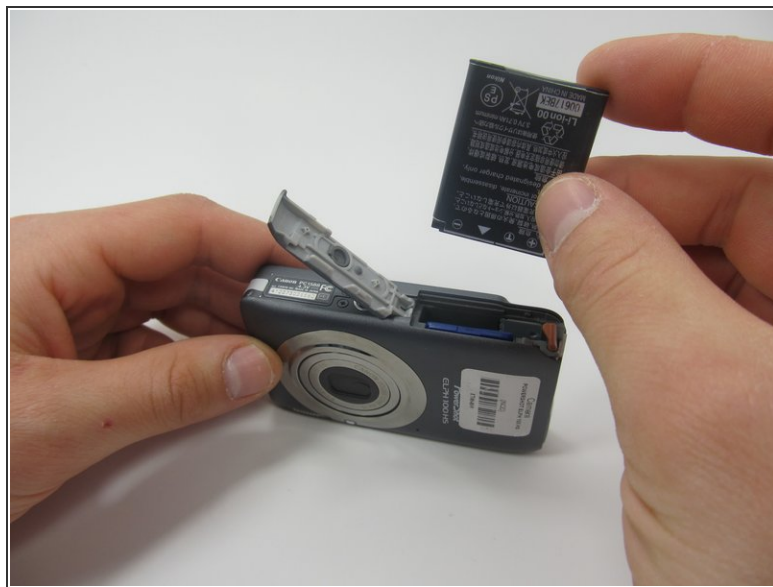
- [powershot elph 100 hs replacement screen](#) (1)

Step 1 — Battery



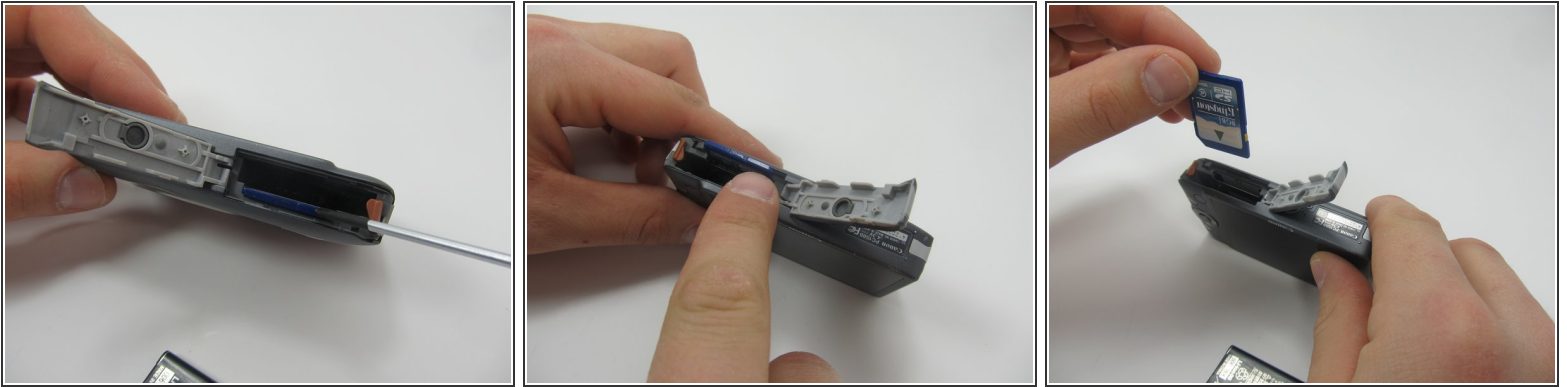
- Locate the battery cover on the bottom of your camera.
- Slide the tab to the right to open the battery cover.

Step 2



- Flip the battery cover open.
 - Using your fingers, slide the battery out of the camera.
- i** This was not the original battery that came the camera, so yours may look different.

Step 3 — Memory Card



- Push down on the memory card until it clicks and releases.
- Pull up on the memory card to remove it.

Step 4 — Outer Case



- Remove the two 3.1mm screws from the bottom of the camera.
- ☑ The display screen of the camera should be facing towards you.

Step 5



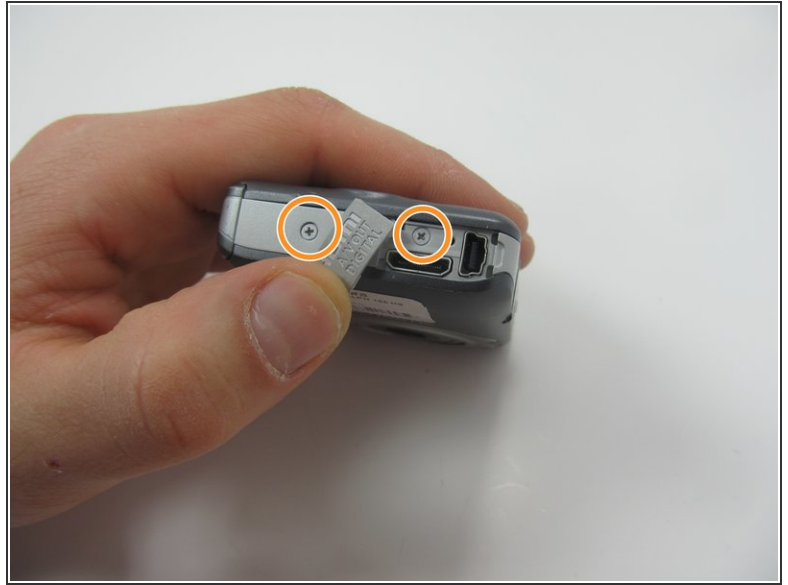
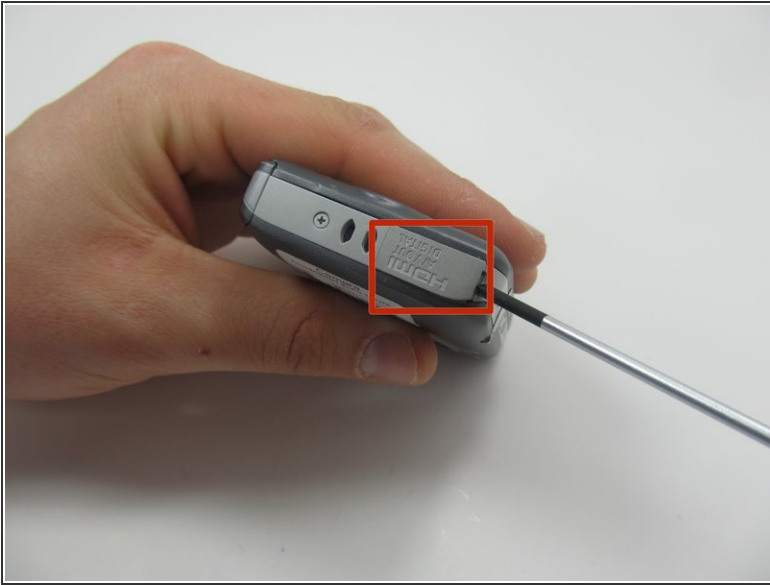
- With the screen facing you, rotate the camera counter clock-wise onto it's side.
- Remove the two 3.1mm screws.


Step 6



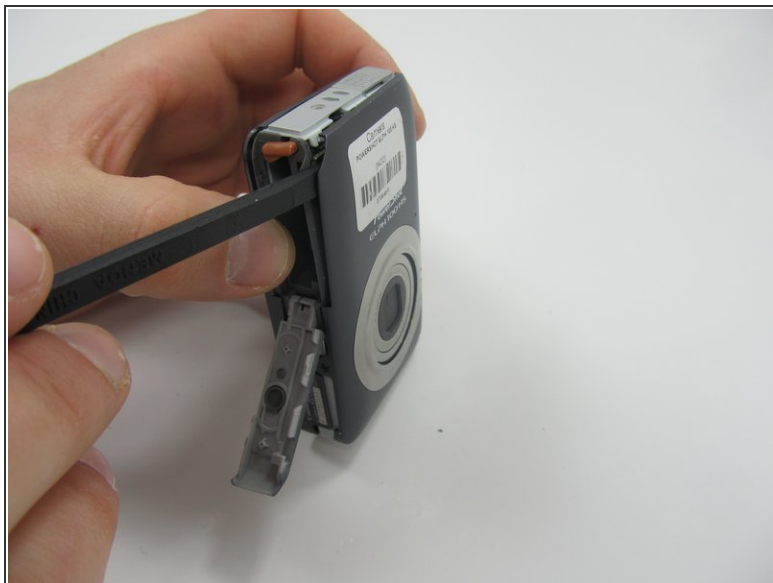
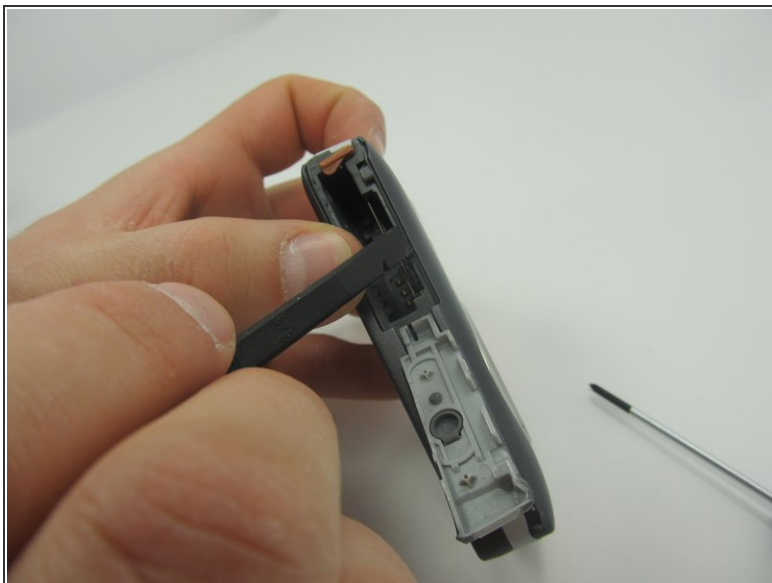
- With the screen still facing you, rotate the camera 180 degrees.
- ☑ The side with the charging port should now be facing up.

Step 7



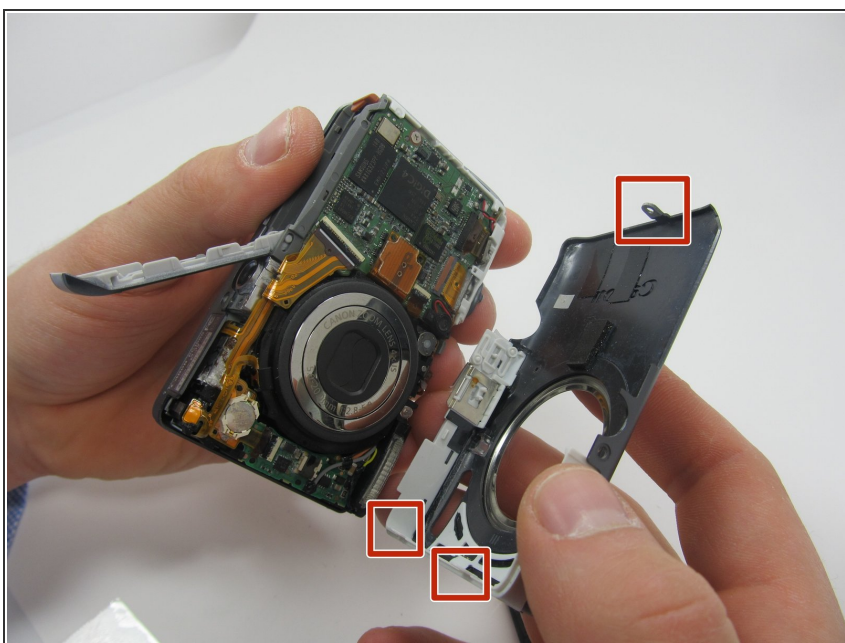
- Use the tool (or fingers) to pry open the charging port cover.
 - Rotate the cover so that you have access to the screw underneath.
 - Remove both 3.1mm screws.
-  The image still shows the screw from step 3 in place.

Step 8



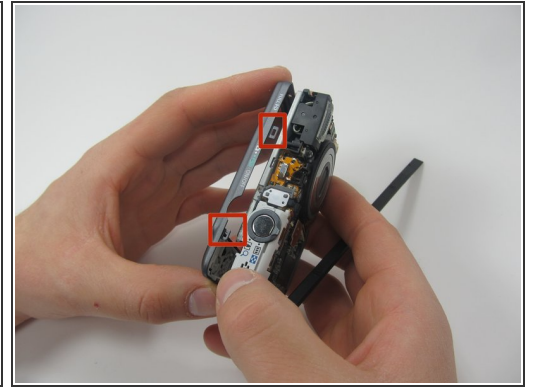
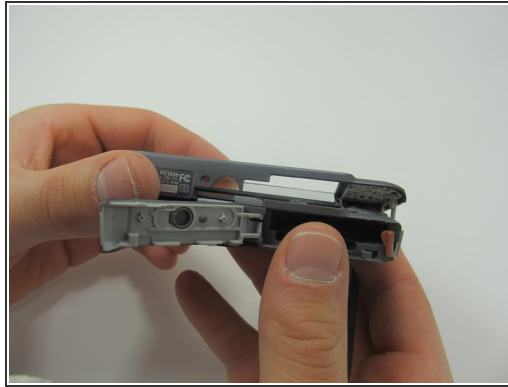
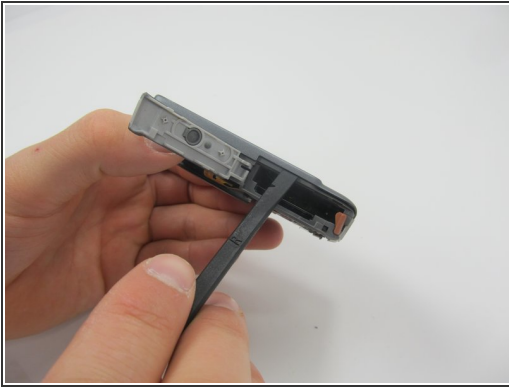
- Turn the camera so the bottom is once again facing up.
- With the battery door still open, use a spudger to remove the cover from the front of the camera.

Step 9



- Pull off the the front cover.
- ⚠ Be careful not to break the tabs that hold it in place.

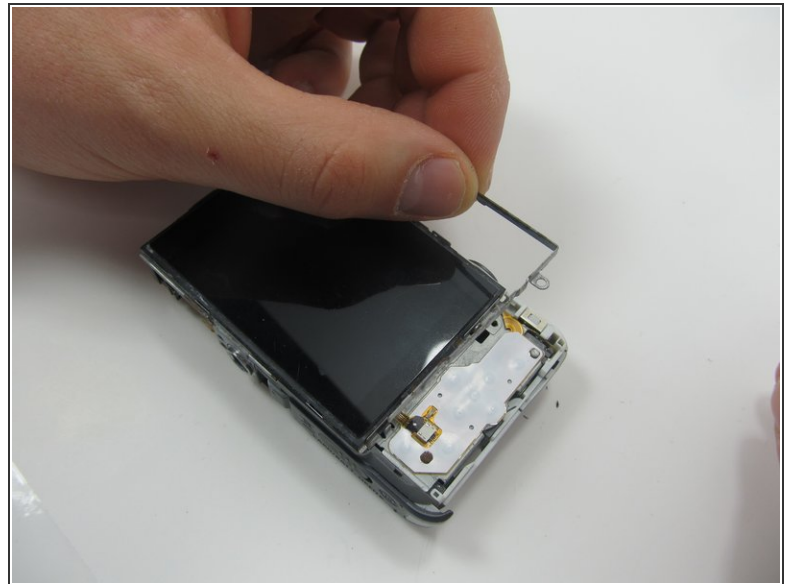
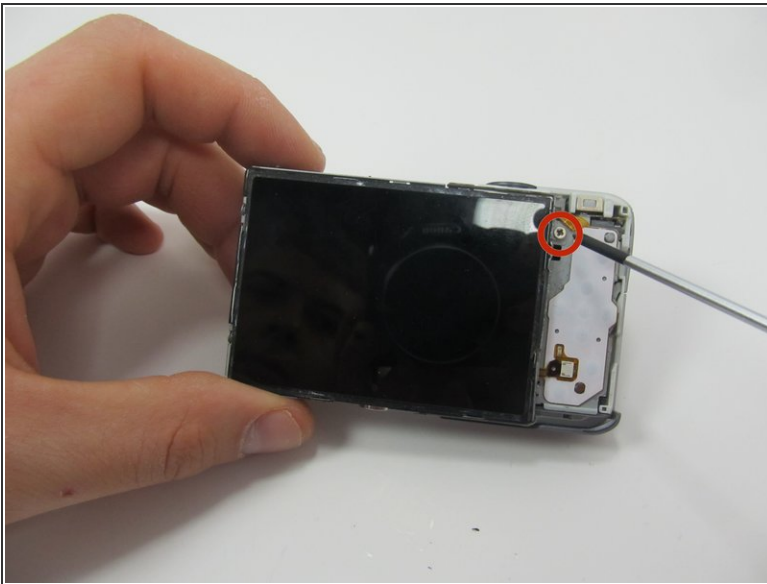
Step 10



- Use the spudger to remove the back cover.

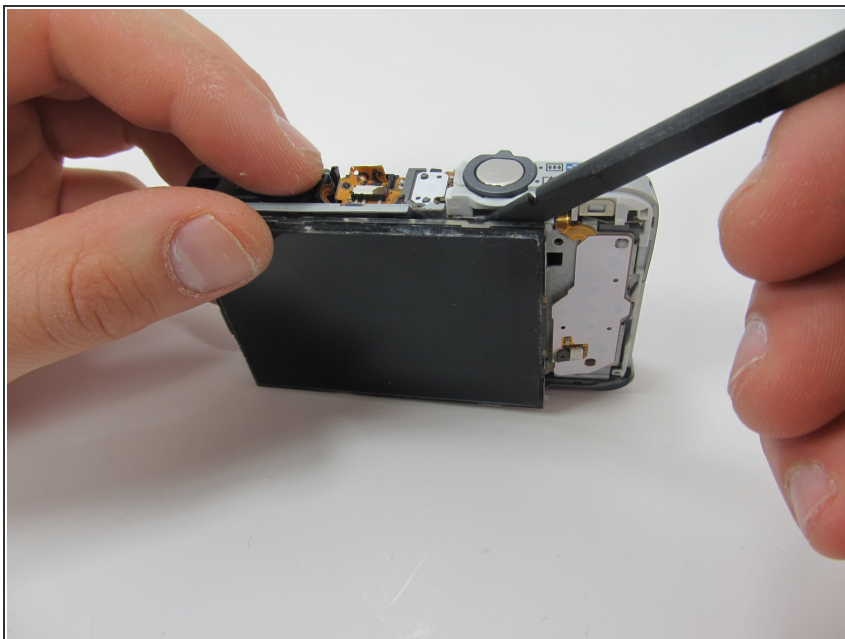
⚠ Be careful not to break the tabs.

Step 11 — LCD Display



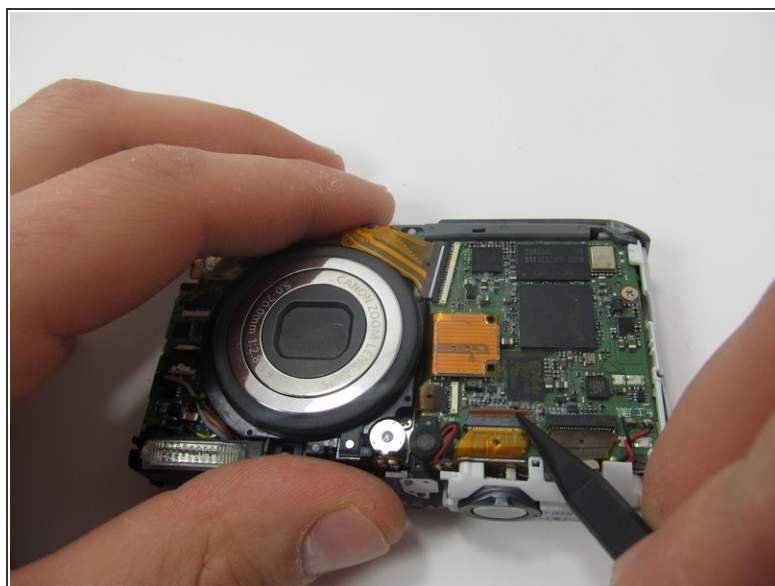
- Remove the 3.1mm screw on the top-right side of the LCD display screen.

Step 12



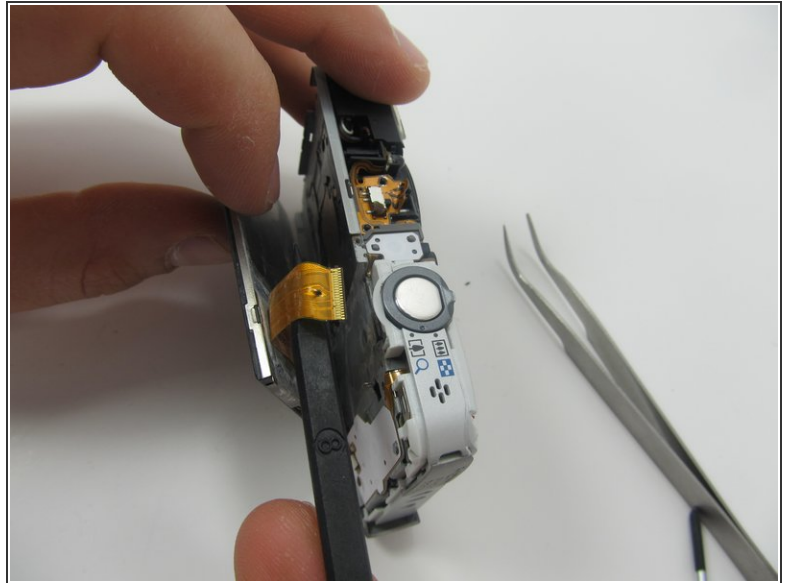
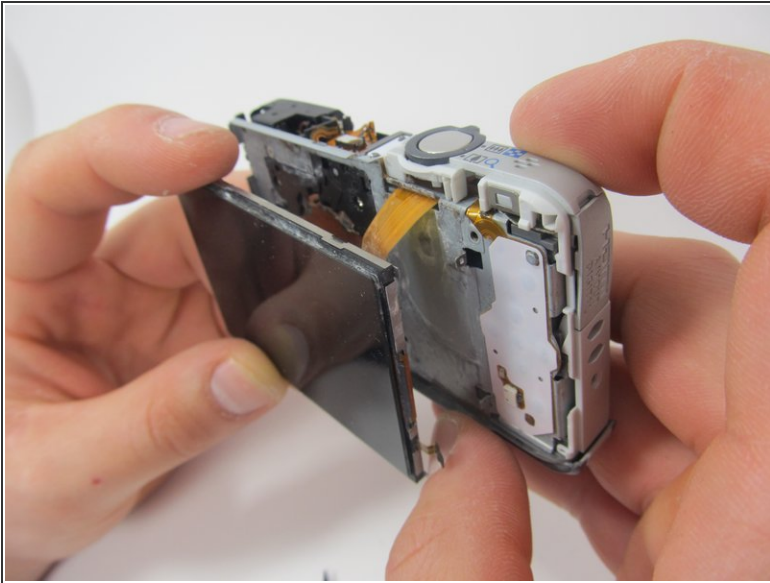
- Use the spudger to carefully separate the screen from the frame.

Step 13



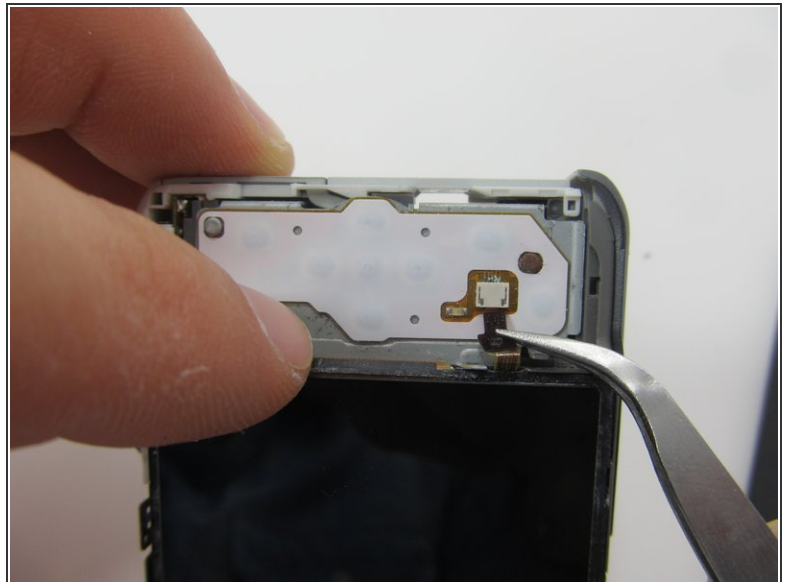
- Use the spudger to lift up the latch on the zero insertion force connector (ZIF).
- Slide the now free ribbon cable from the connector.

Step 14



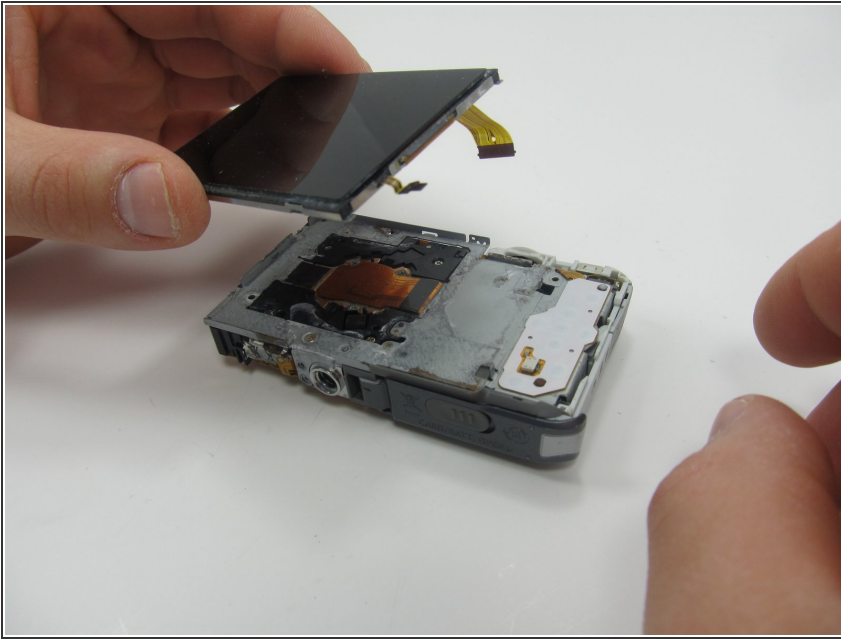
- Holding the display screen, gently pull the ribbon cable out through the frame of the camera.

Step 15



- Using tweezers, carefully remove the ribbon cable from the connector shown.

Step 16



- The display screen should now be free.

To reassemble your device, follow these instructions in reverse order.