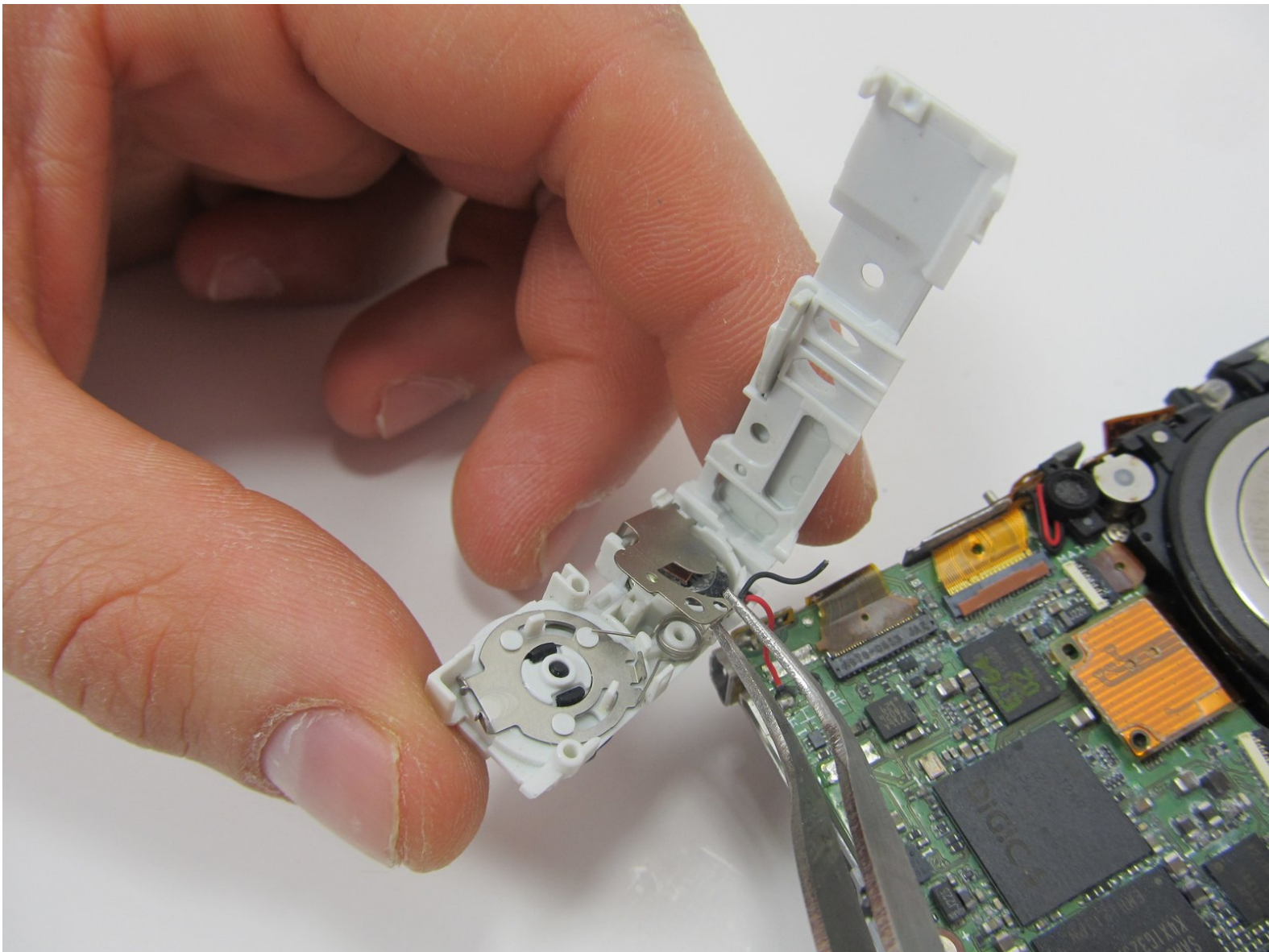




# Canon Powershot ELPH 100 HS Speaker Replacement

This guide will walk you through replacing a damaged speaker. Make sure you follow the first two steps to remove the battery and memory card.

Written By: Jacob



---

## INTRODUCTION

This process involves soldering—make sure you are proficient at soldering before attempting this task.

Because many soldering irons take time to heat up, turn yours on before beginning. This will save you time later on in the procedure.



### TOOLS:

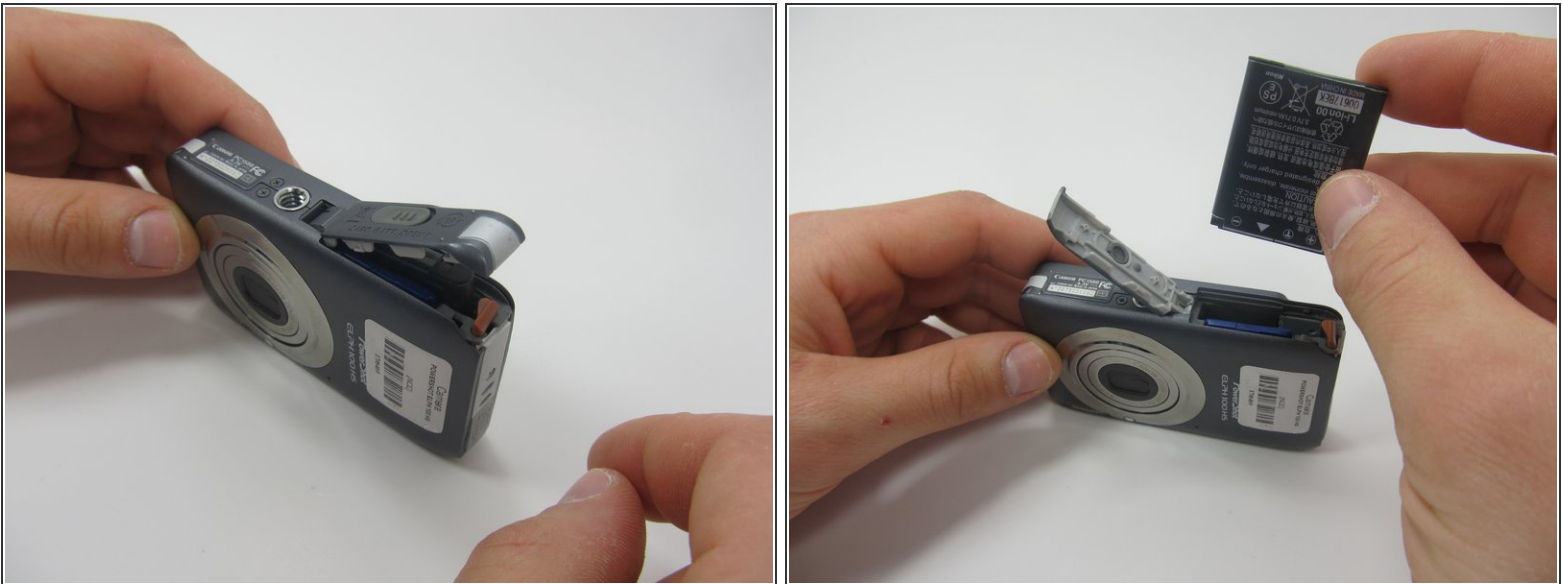
- [Phillips #00 Screwdriver](#) (1)
  - [Spudger](#) (1)
  - [Soldering Workstation](#) (1)
  - [Tweezers](#) (1)
-

## Step 1 — Battery



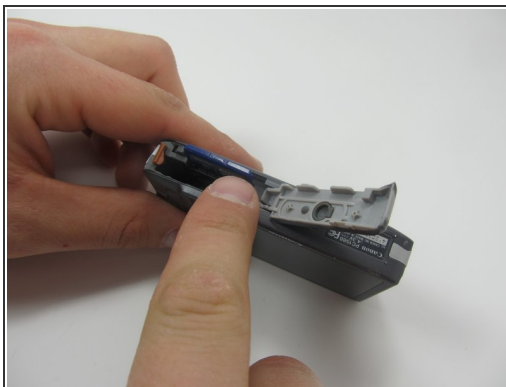
- Locate the battery cover on the bottom of your camera.
- Slide the tab to the right to open the battery cover.

## Step 2



- Flip the battery cover open.
  - Using your fingers, slide the battery out of the camera.
- i** This was not the original battery that came the camera, so yours may look different.

### Step 3 — Memory Card



- Push down on the memory card until it clicks and releases.
- Pull up on the memory card to remove it.

### Step 4 — Outer Case



- Remove the two 3.1mm screws from the bottom of the camera.
- ☑ The display screen of the camera should be facing towards you.



## Step 5



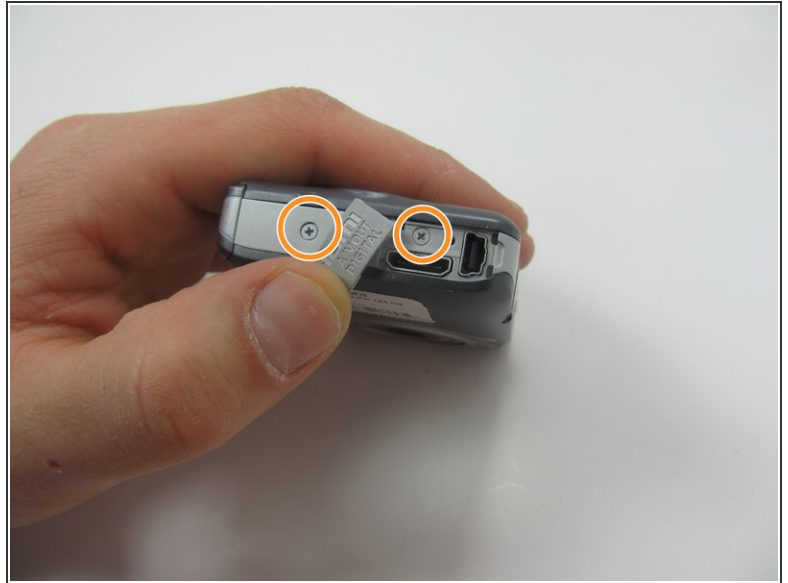
- With the screen facing you, rotate the camera counter clock-wise onto it's side.
- Remove the two 3.1mm screws.


## Step 6



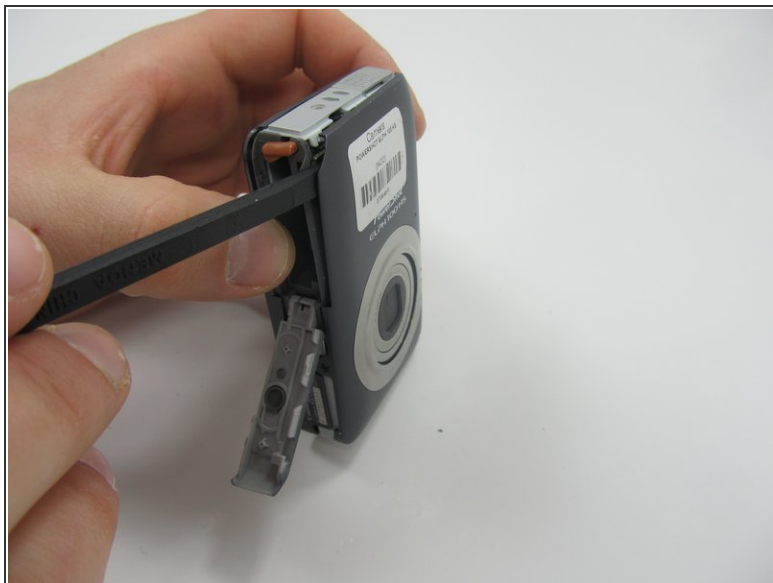
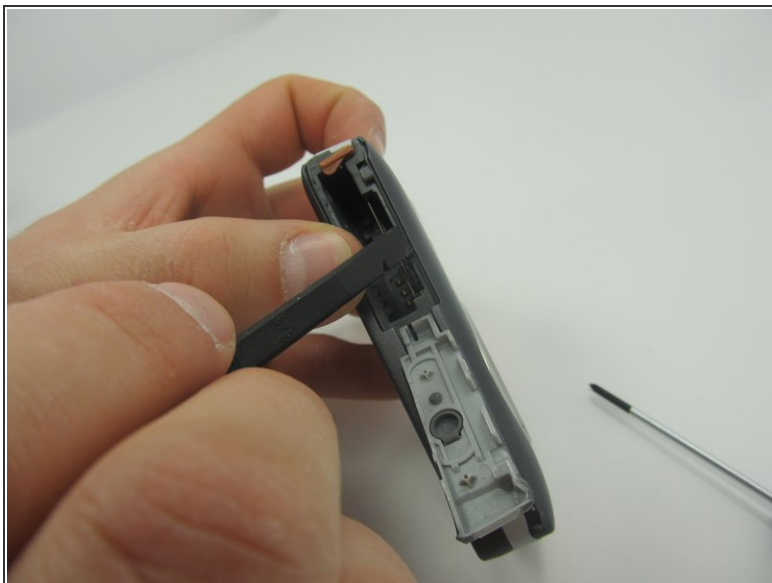
- With the screen still facing you, rotate the camera 180 degrees.
- ★ The side with the charging port should now be facing up.

## Step 7



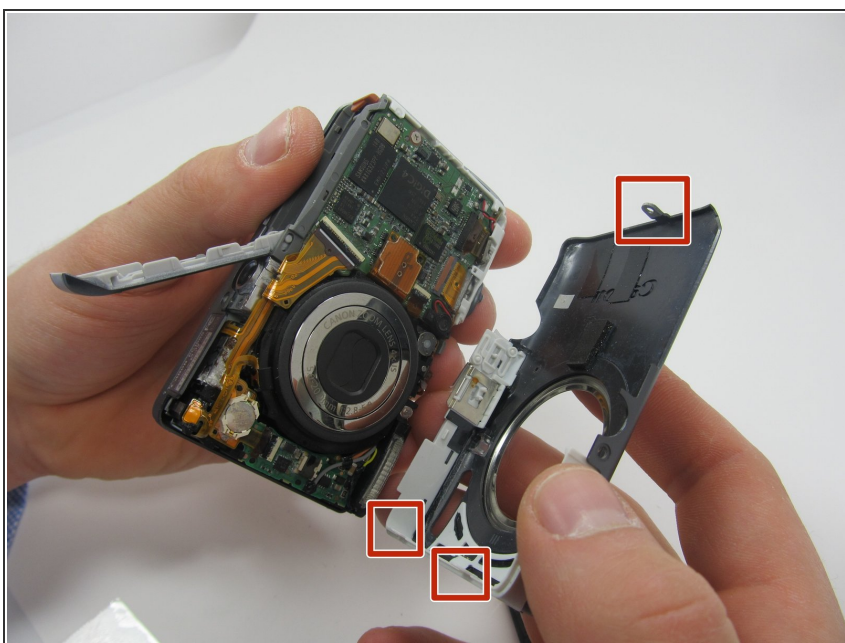
- Use the tool (or fingers) to pry open the charging port cover.
  - Rotate the cover so that you have access to the screw underneath.
  - Remove both 3.1mm screws.
-  The image still shows the screw from step 3 in place.

## Step 8



- Turn the camera so the bottom is once again facing up.
- With the battery door still open, use a spudger to remove the cover from the front of the camera.

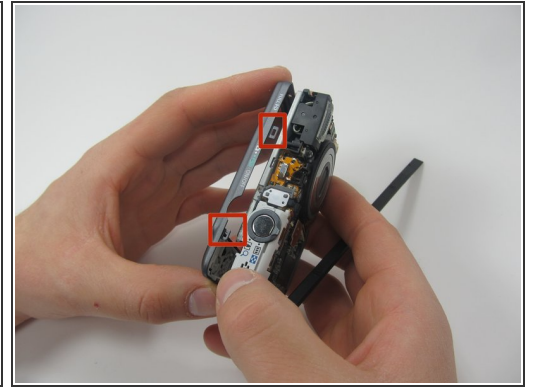
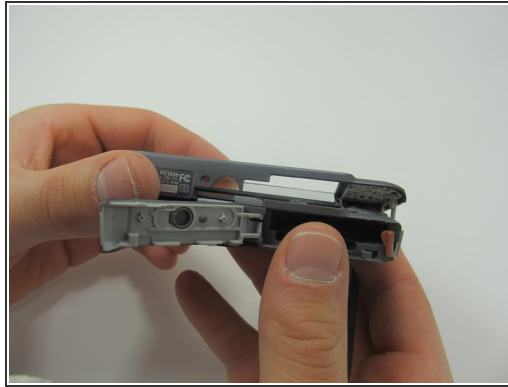
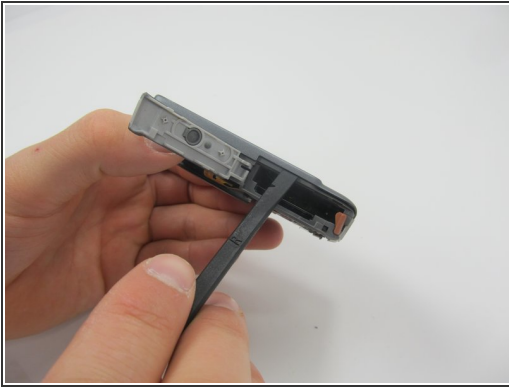
## Step 9



- Pull off the the front cover.

⚠ Be careful not to break the tabs that hold it in place.

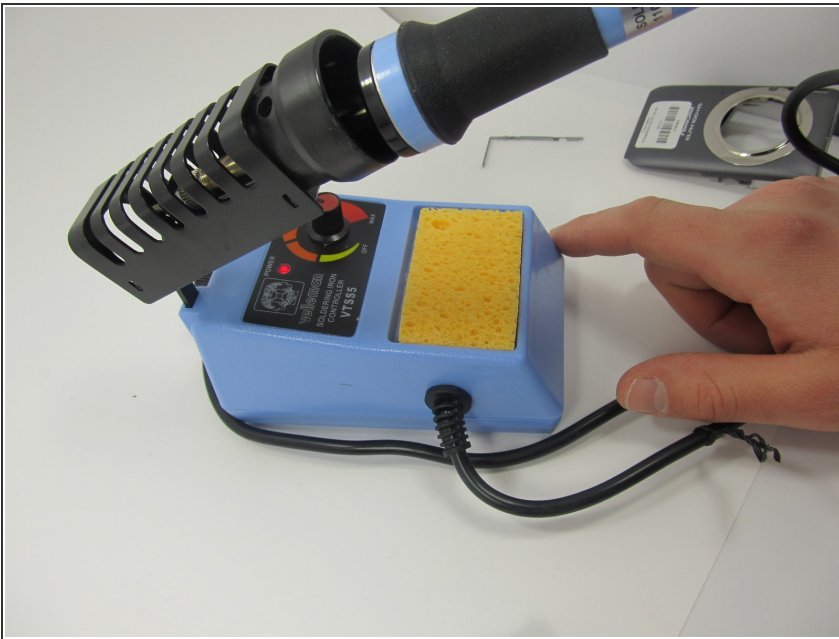
## Step 10



- Use the spudger to remove the back cover.

⚠ Be careful not to break the tabs.

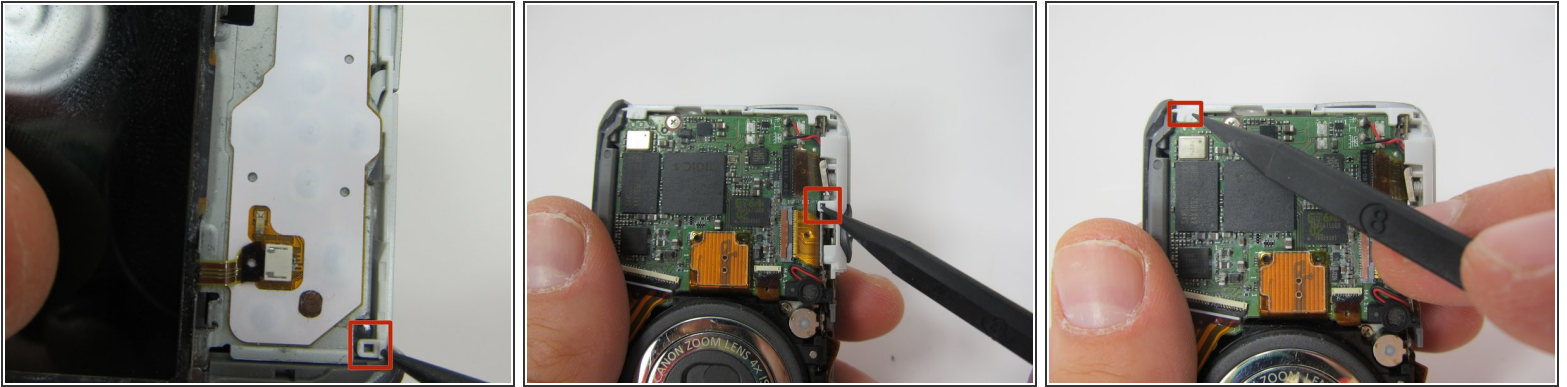
## Step 11 — Speaker



- Turn on soldering Iron.



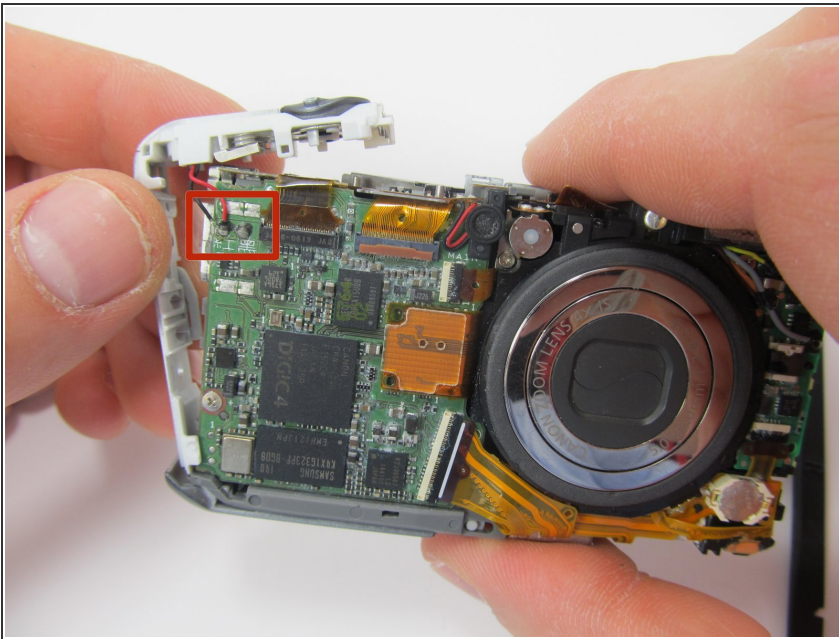
## Step 12



- Gently take off the tabs of the power button housing from the camera.

⚠ Be careful not to break the wires that connect the housing to the body of the camera.

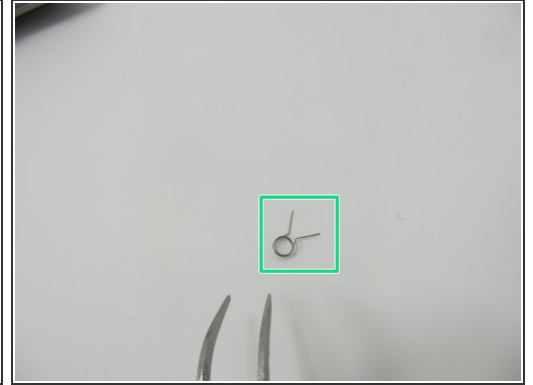
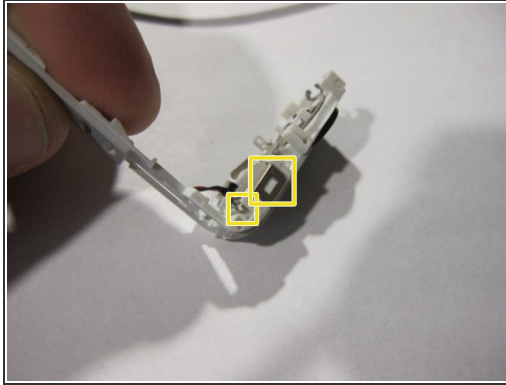
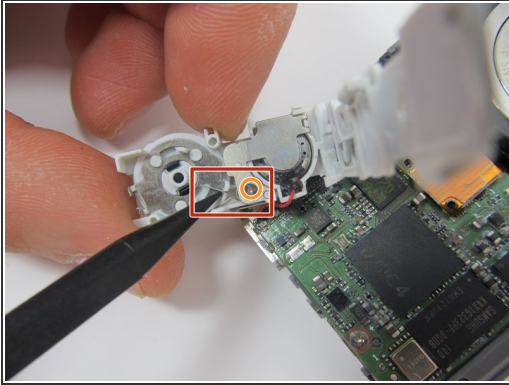
## Step 13



⚠ Make sure the battery is removed.

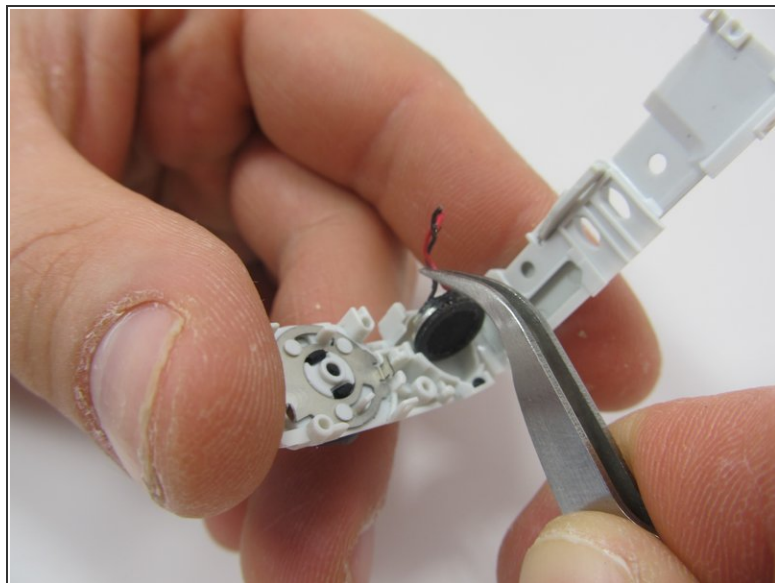
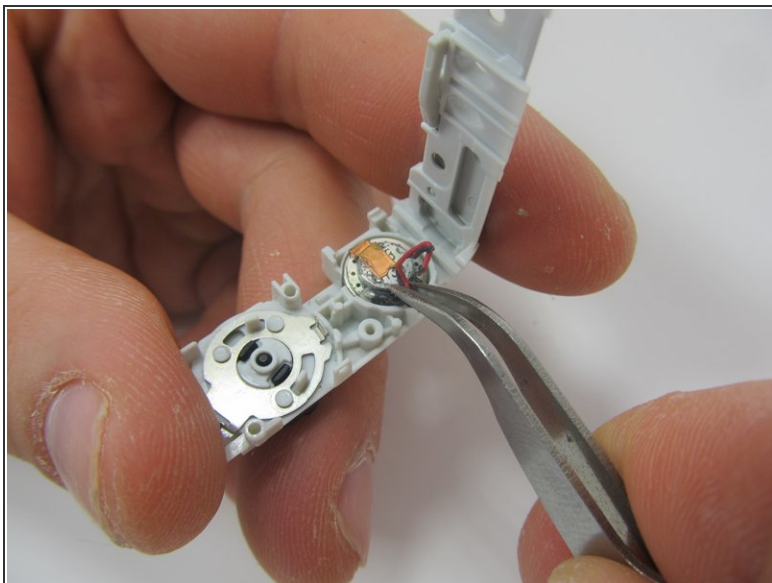
- Cut the wires half way between the microphone and body of camera.

## Step 14



- Take note of the spring. You will need to re-install it later.
  - Remove the 3.1mm screw holding speaker to the housing.
  - Remove the two clips and the metal cover will be released
- ⚠ When you remove the metal cover the spring will shoot out.
- Image of the spring.

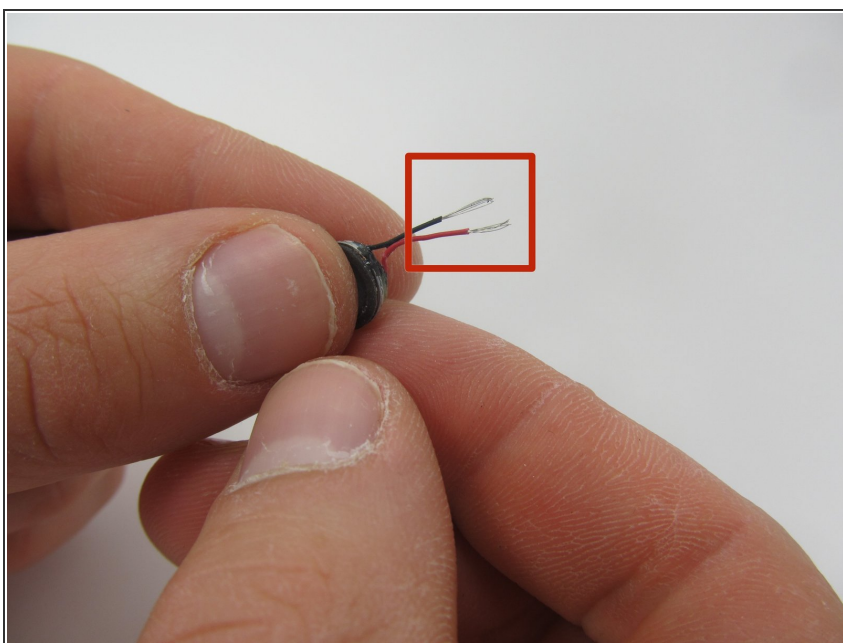
## Step 15



- Using tweezers, grab the wires to pull the speaker from the plastic housing.

✦ Use force as the speaker is glued to the housing.

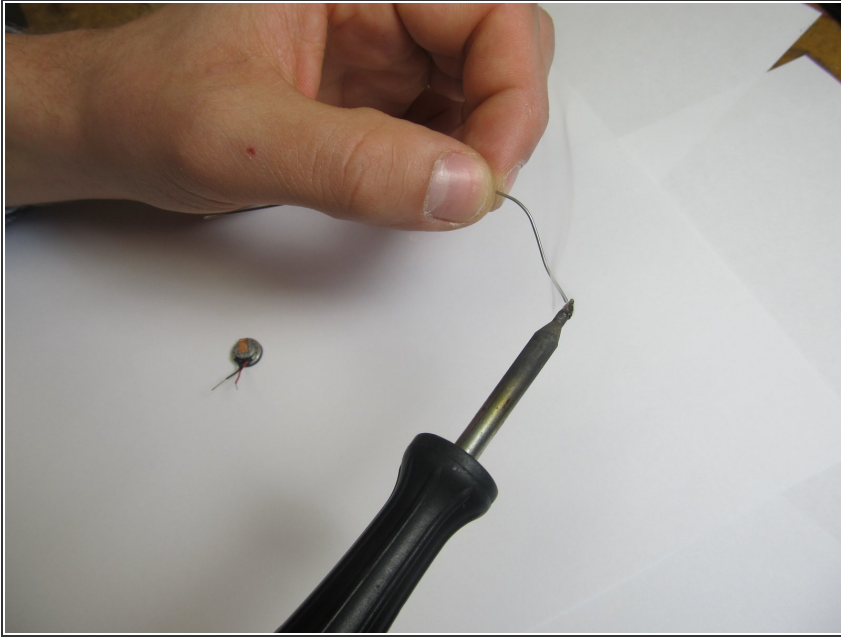
## Step 16



- When cutting the wires, leave approximately 25-30mm of the wire on the speaker.
  - Strip the ends of the newly cut wires.
- ✦ Expose only 2 mm of bare wire.

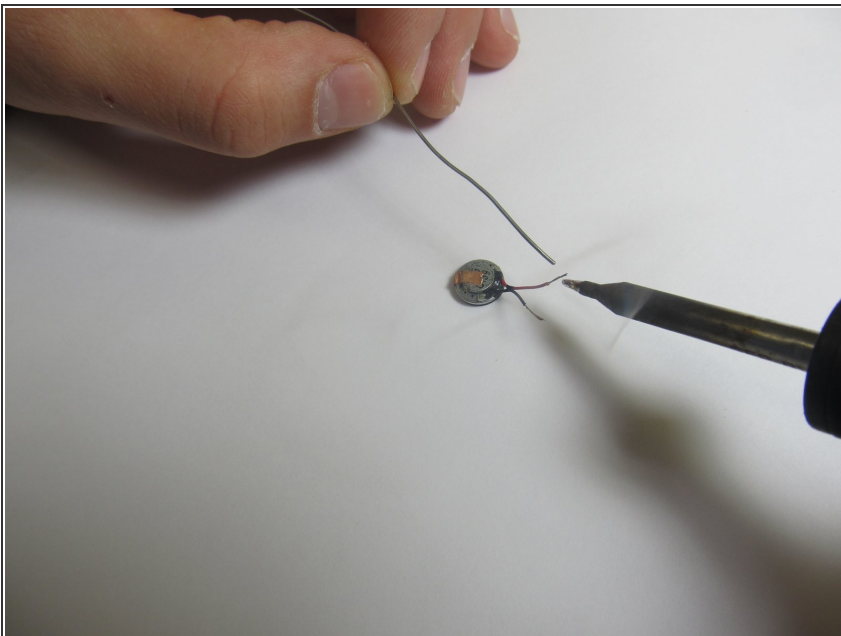


## Step 17



- Test the heat of the soldering iron by touching it to the tip of a paperclip.
- ❗ If the tip of the paperclip melts, the iron should be ready.
- ⚠ If you have never used a soldering iron before, please consult the tutorial in the description of this guide, or watch the following video: [How To Solder](#) Or [Soldering Techniques](#).

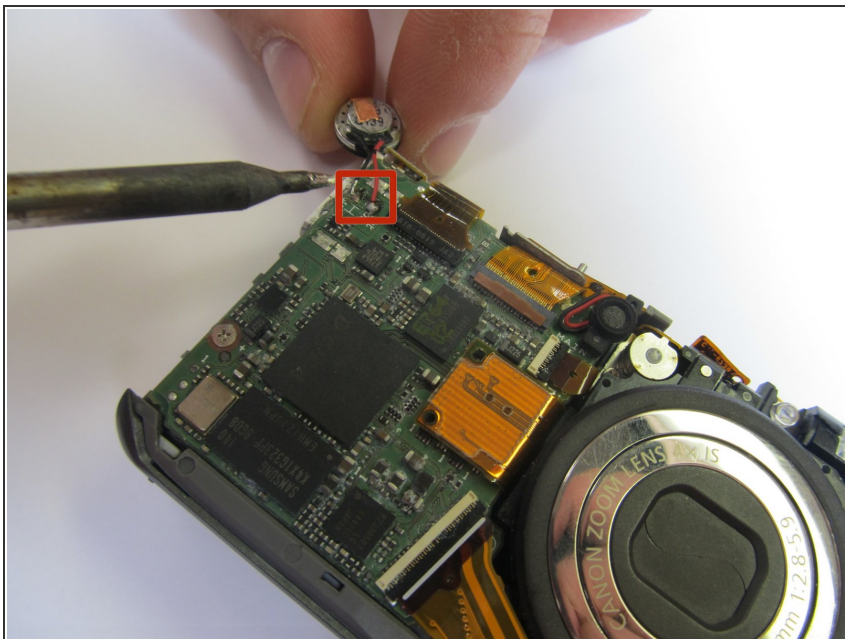
## Step 18



- Solder the exposed wire.



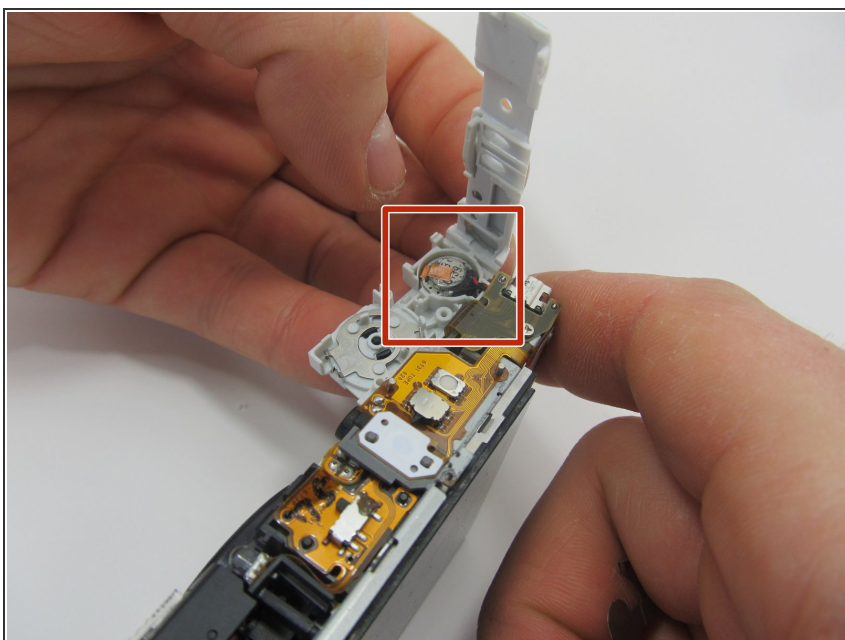
## Step 19



- Solder the red wire to the right terminal, and the black wire to the left terminal.

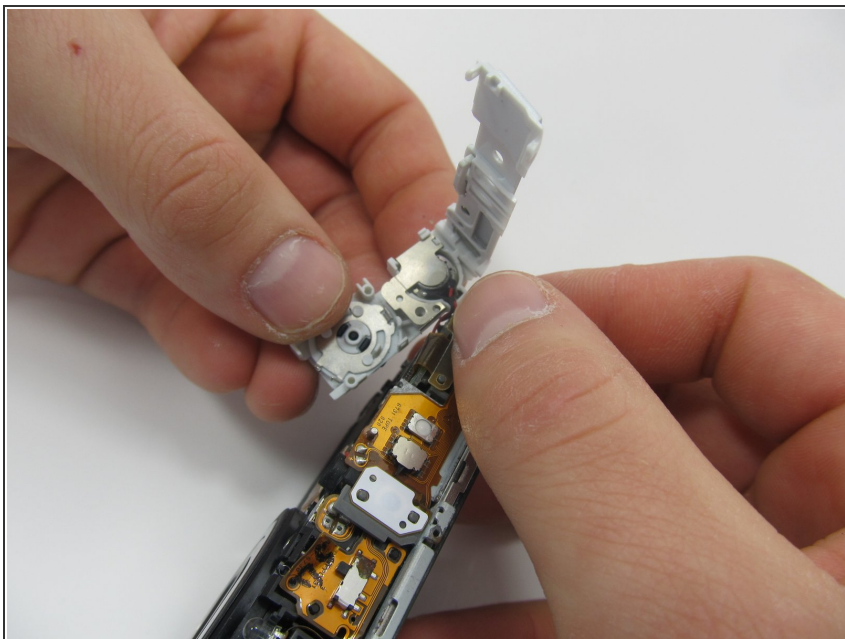
⚠ Do not apply force to the speaker wires during this step. If the wires break, you will need to re-solder them.

## Step 20



- Place the speaker back in it's housing.

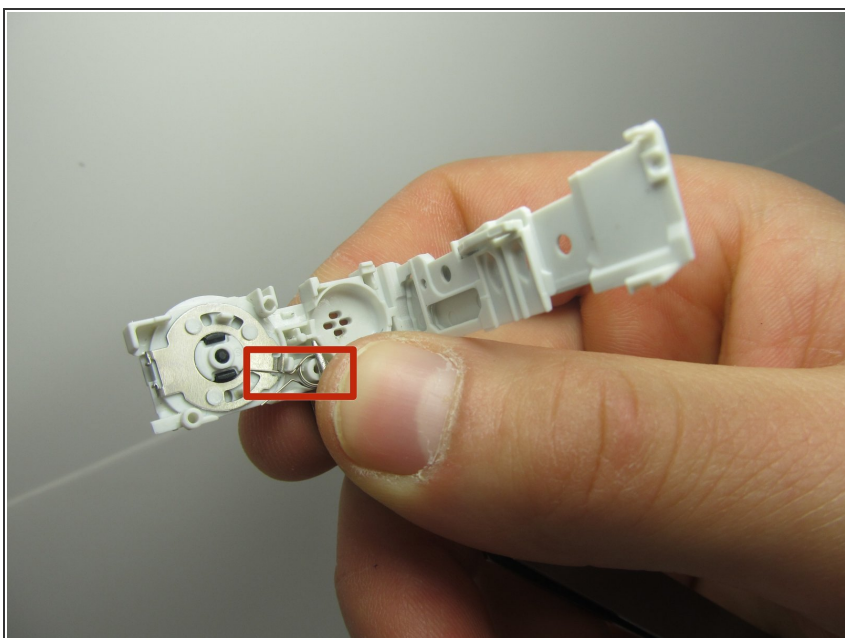
## Step 21



- Place the metal cover over the speaker.

☑ Do not attach the screw.

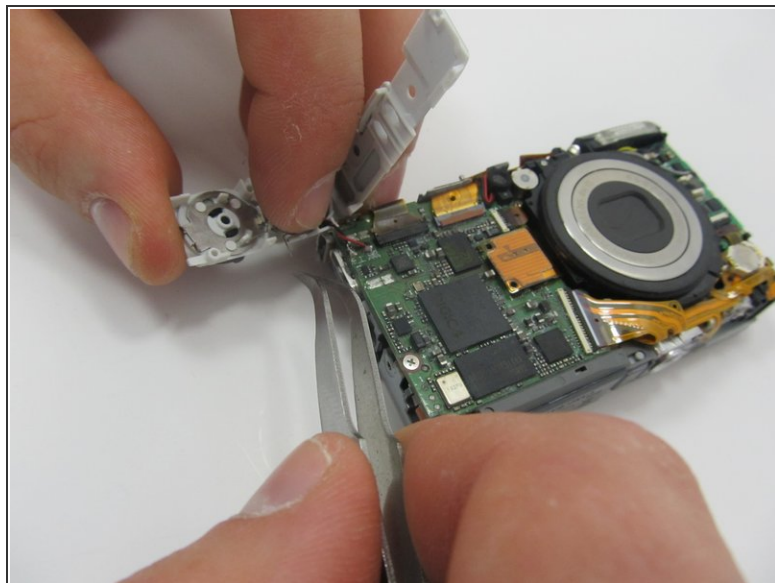
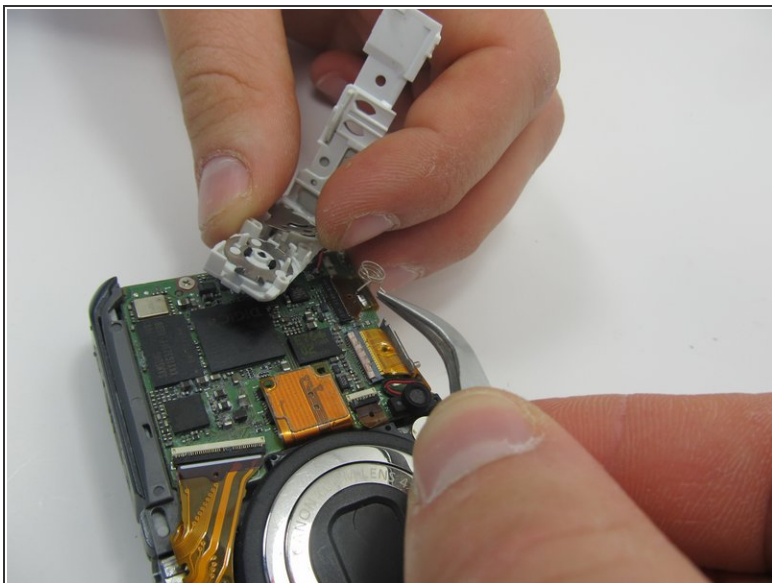
## Step 22



- Take note of how the spring sits in the plastic.

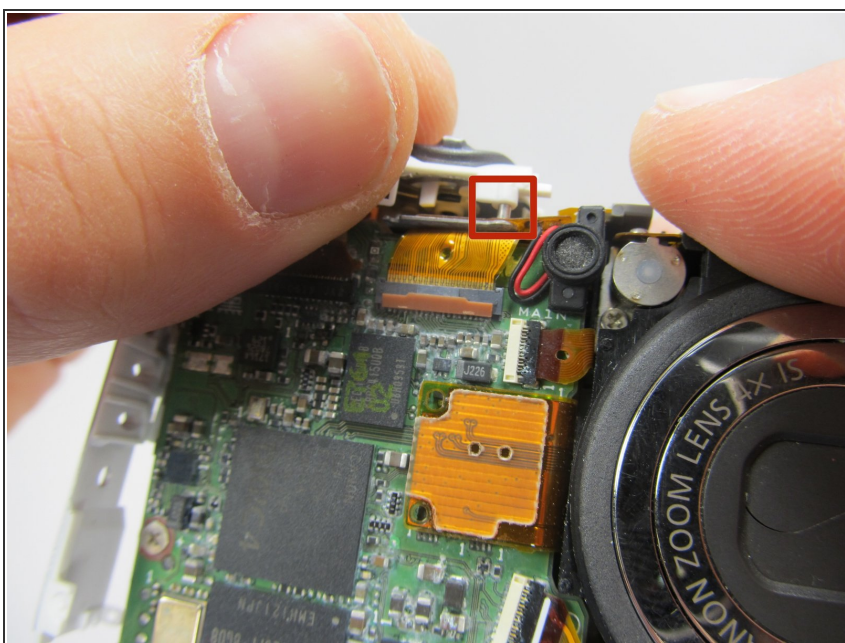
ⓘ The easiest way to keep the spring in place is to re-install the speaker and its cover before the spring.

## Step 23



- Lift up the corner of the metal cover and slide the spring in so it rests around the screw hole.
- After the spring is around the screw hole post, replace the screw so that the cover stays in place.

## Step 24



- To reattach the speaker housing to the rest of the camera, make sure the pins and clips are aligned.

To reassemble your device, follow the case disassembly guide in reverse.