



# Canon Powershot S110 Option Dial Replacement

The option dial is on the top of the camera next to the power button. This guide will explain how to replace a defective dial.

Written By: akac92



---

## INTRODUCTION

In this guide, the process of partially breaking down the Canon Powershot S110 and replacing the option dial will be explained in detail.

---



### TOOLS:

- [Phillips #0 Screwdriver](#) (1)
  - [iFixit Opening Tools](#) (1)
-

## Step 1 — Option Dial



- Remove the battery by sliding open the battery cover on the bottom of the camera.
- ⓘ The battery must be removed to avoid shorting out any part of the camera.

## Step 2



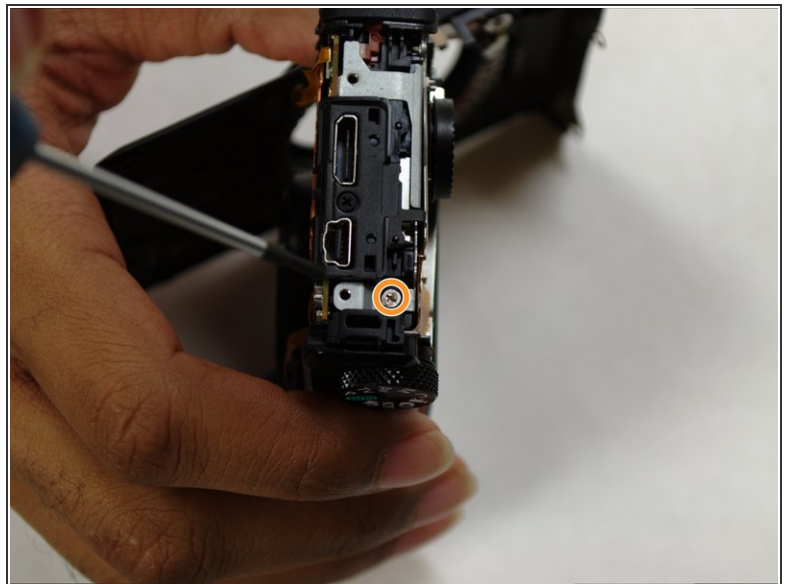
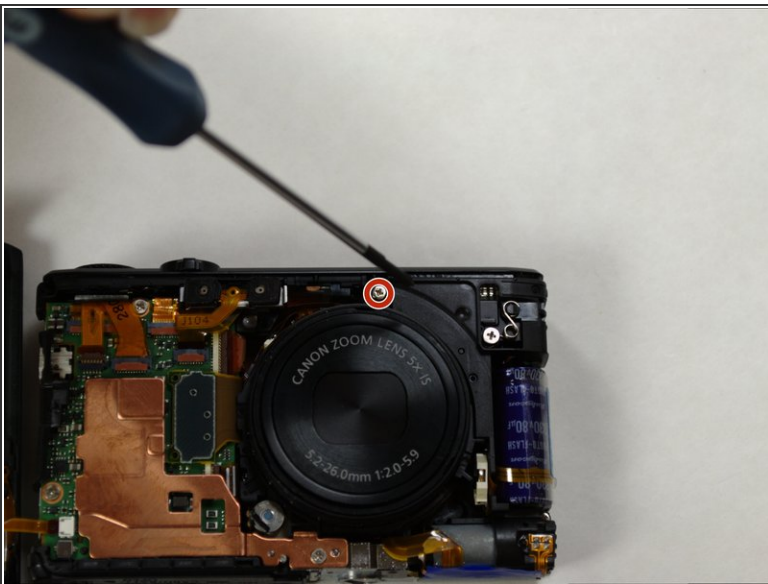
- Remove the six screws by using a small Phillips head screwdriver.
- Remove the two screws on the side of the camera on either side of the HDMI input panel.
- Remove the two screws on the opposite side of the camera.
- Remove the two screws on the bottom of the camera located on either side of the tripod mounting hole.

### Step 3



- Using an opening tool, carefully remove the outermost cover of the camera from its holders around the edges.
- ⓘ Once all of the clips around the plastic cover are released, the cover will lift off.

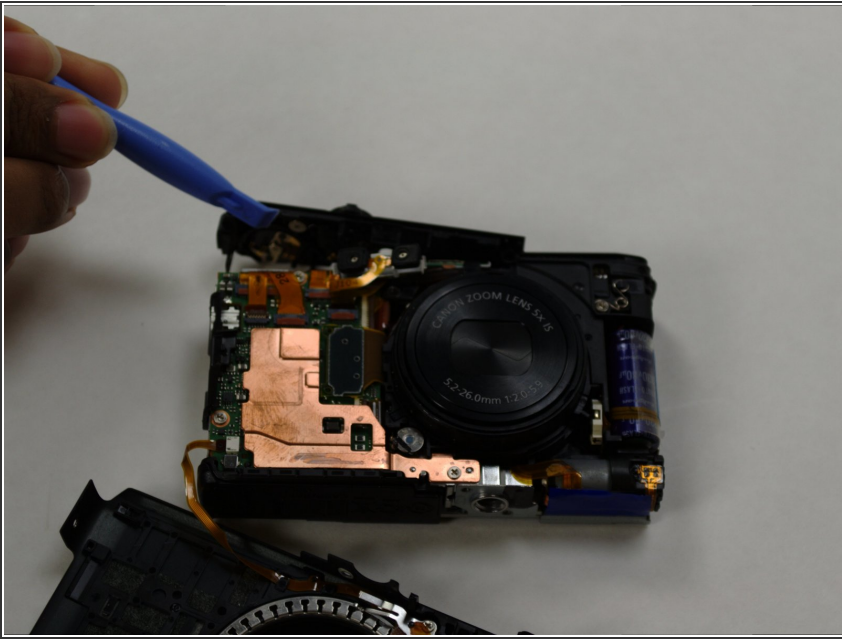
### Step 4



- Remove the two screws holding the top plastic bracket in place by using a Phillips head screwdriver.
- Remove the screw holding down the lens cover.
- Remove the screw located near the option dial next to the USB connections.

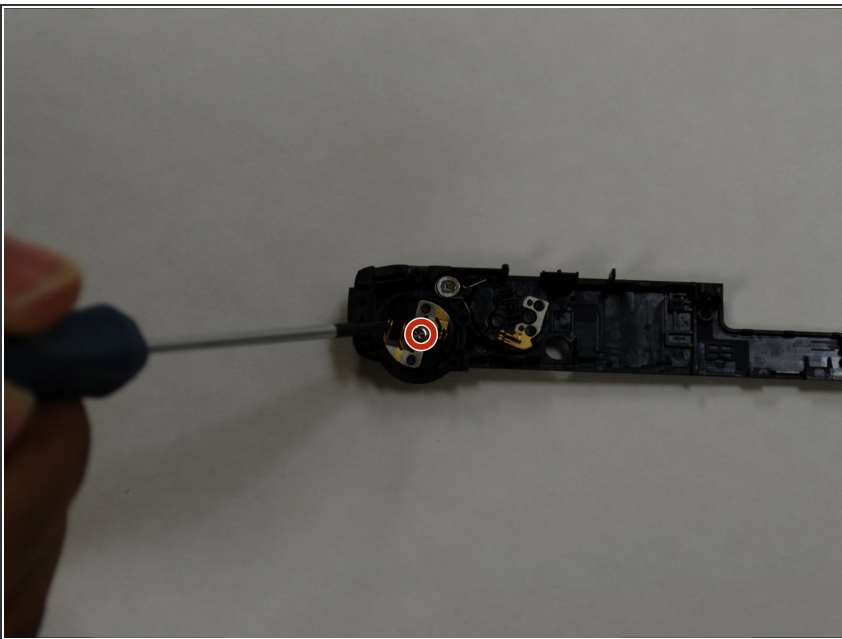
This document was generated on 2019-09-30 08:54:43 AM (MST).

## Step 5



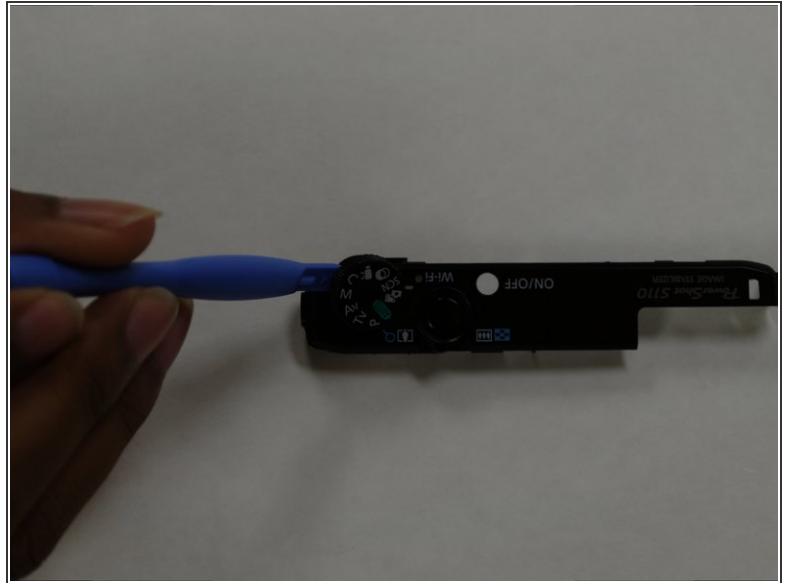
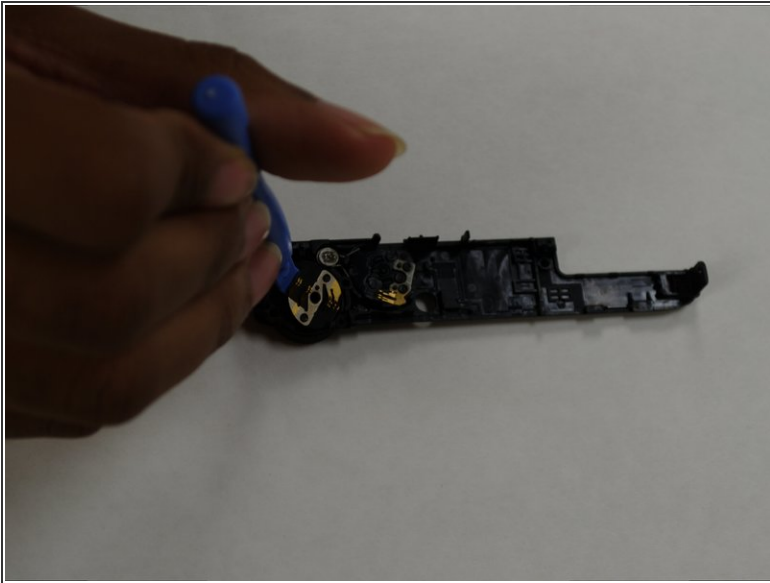
- Carefully lift the top panel of the camera by using a prying tool.

## Step 6



- Remove the screw at the center of the option dial by using a Phillips head screwdriver.

## Step 7



- Remove the underlying component that was attached to the now-removed screw by using a prying tool.
- Remove the dial on the opposite side of the part using a prying tool.

To reassemble your device, follow these instructions in reverse order.