



# Canon Powershot S200 Motherboard Replacement

How to replace a Canon Powershot S200 motherboard.

Written By: Orlando Zuniga



---

## INTRODUCTION

The motherboard connects all parts of the camera together. This guide will show you how to disassemble the Canon Powershot S200 in order to reach the motherboard.

---

### TOOLS:

- [Phillips #00 Screwdriver](#) (1)
-

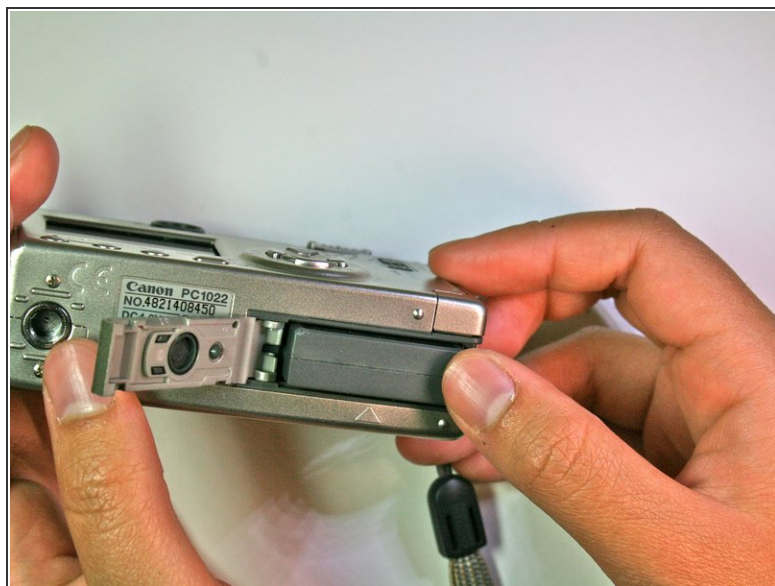


## Step 1 — Battery



- Slide the grey latch to open the battery compartment.

## Step 2



- Push and slide the orange retaining clip to the right to remove the battery.

### Step 3



- Remove battery from the camera.

### Step 4 — Motherboard




- Remove the lanyard.



## Step 5



 Be careful to keep track of the different screw sizes as you proceed with this guide.

- Find the bottom face of the camera. Remove the two 2.3mm screws beneath the name plate and the two 2.8 mm screws surrounding the threaded tripod mount.

## Step 6



- Remove the 3.8mm screw from the back face of the camera.

## Step 7



- Remove the two 2.3mm screws from the right face of the camera.

## Step 8



- Remove the two outer 3.2mm screws from the left side of the camera
- Remove the two inner 3.7mm screws from the left side of the camera.

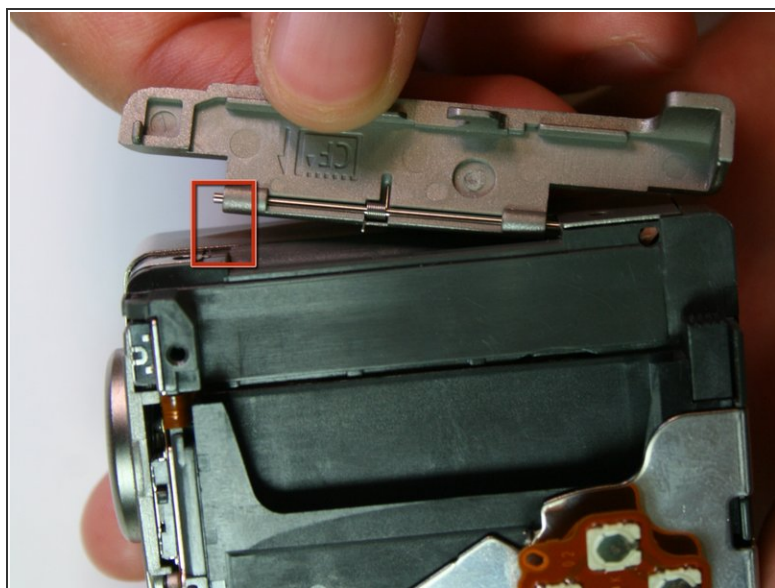
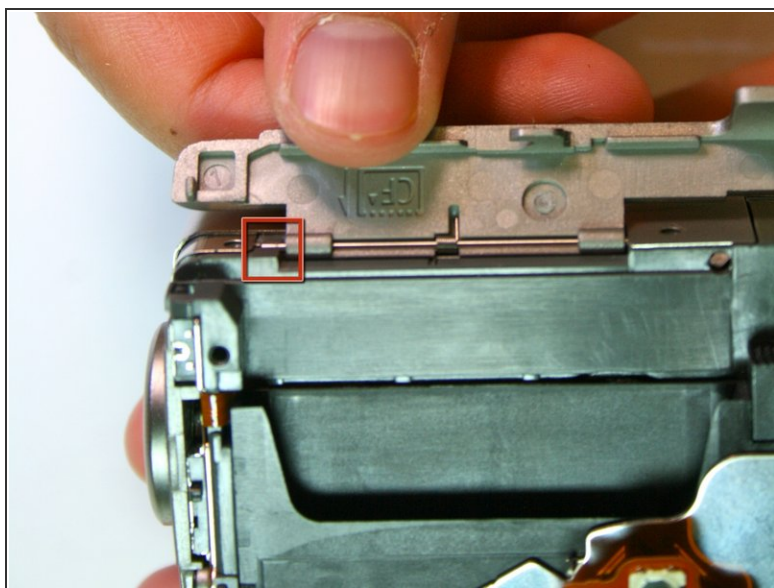


## Step 9



- Pull the back face panel away from the front end of the body. This may take some wiggling and force.

## Step 10



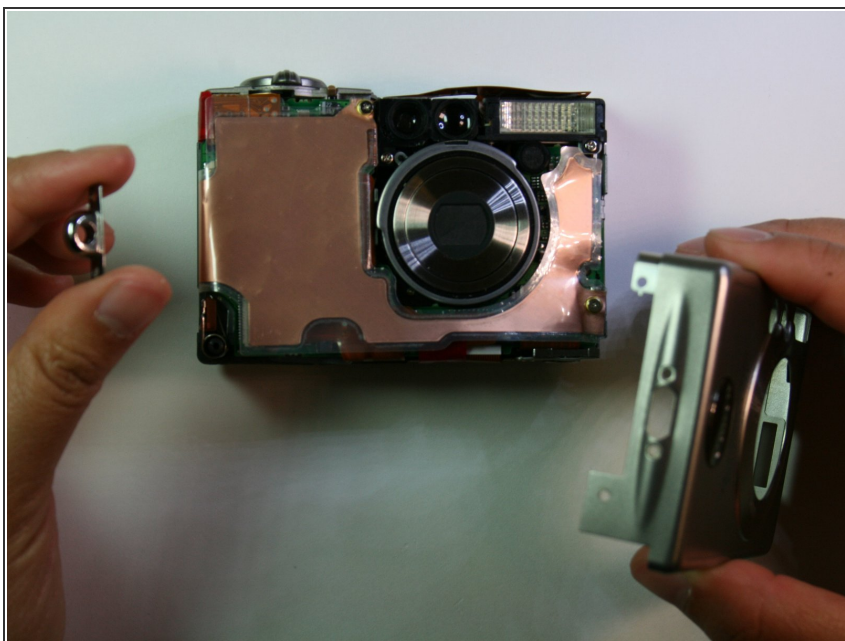
- Remove the CF card door from the left side of the camera body.

## Step 11



- Slide the rubber digital a/v cap out of place on the front plate.

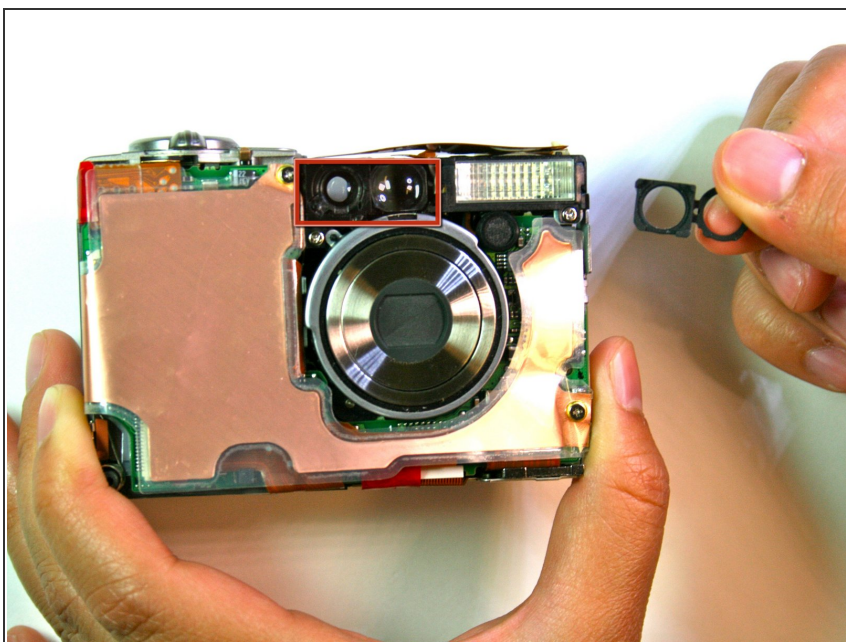
## Step 12



- Remove the front face by sliding it off.

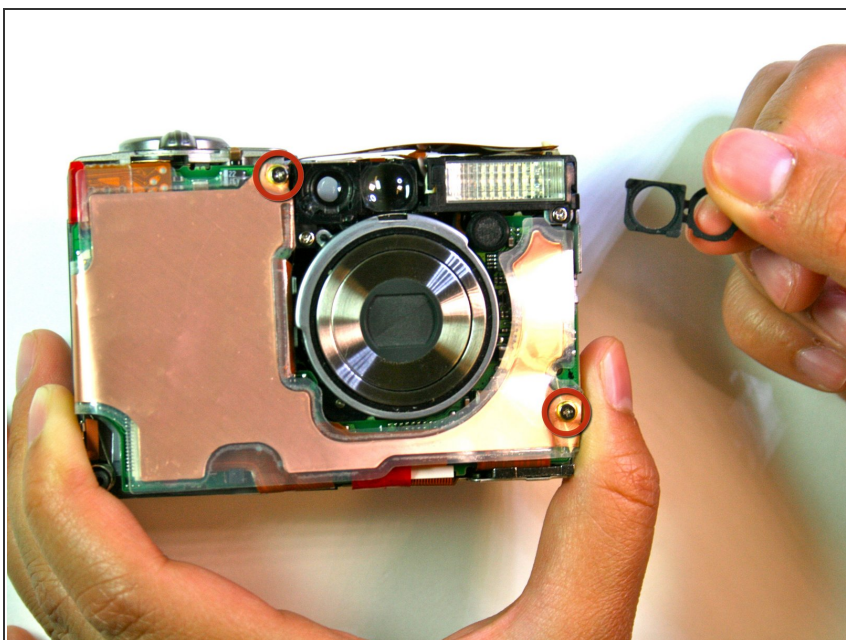


## Step 13



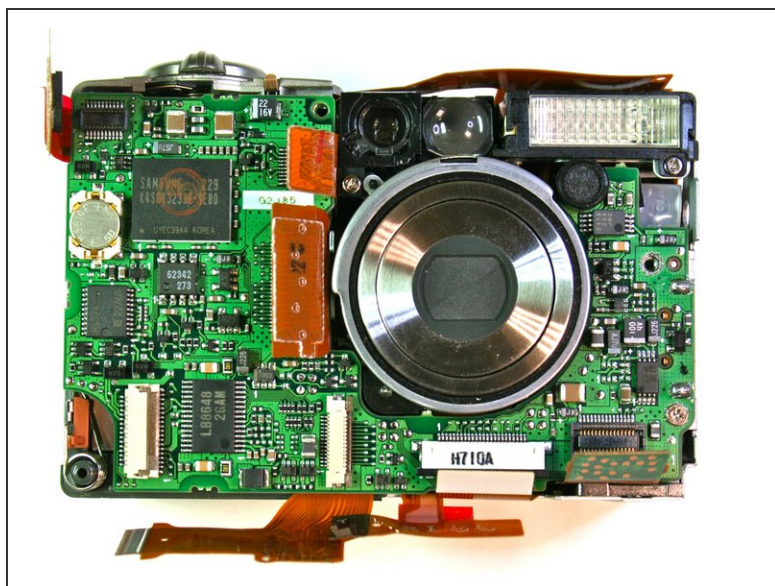
- Remove the rubber seal that covers the right side of the viewfinder.

## Step 14



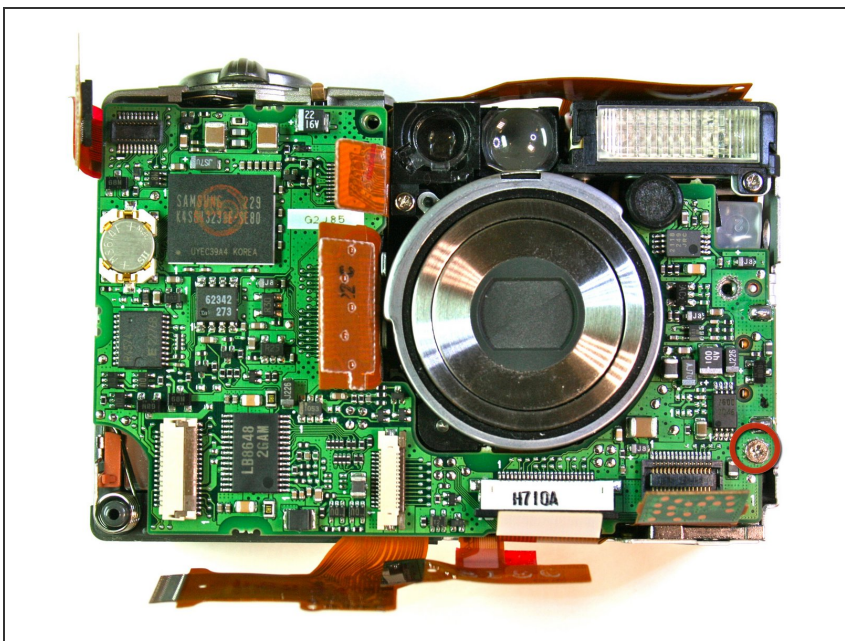
- Remove the two 3.9mm screws that hold the laminated cooper sheet.

## Step 15



- Remove the wire connections that connect along the bottom of the motherboard.

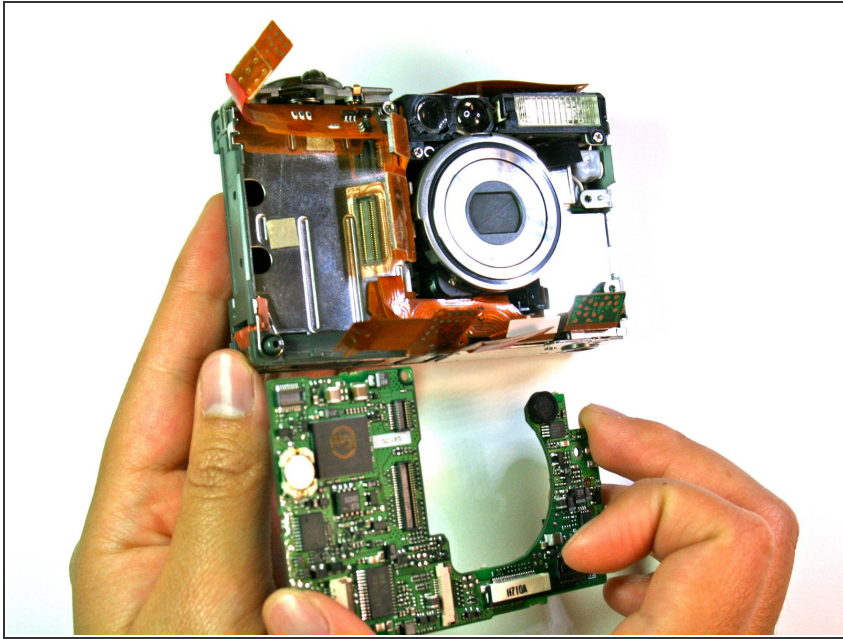
## Step 16



- Remove the single 3.8mm screw that is on the motherboard.



## Step 17



- Remove the motherboard from the main frame of the camera body.

To reassemble your device, follow these instructions in reverse order.