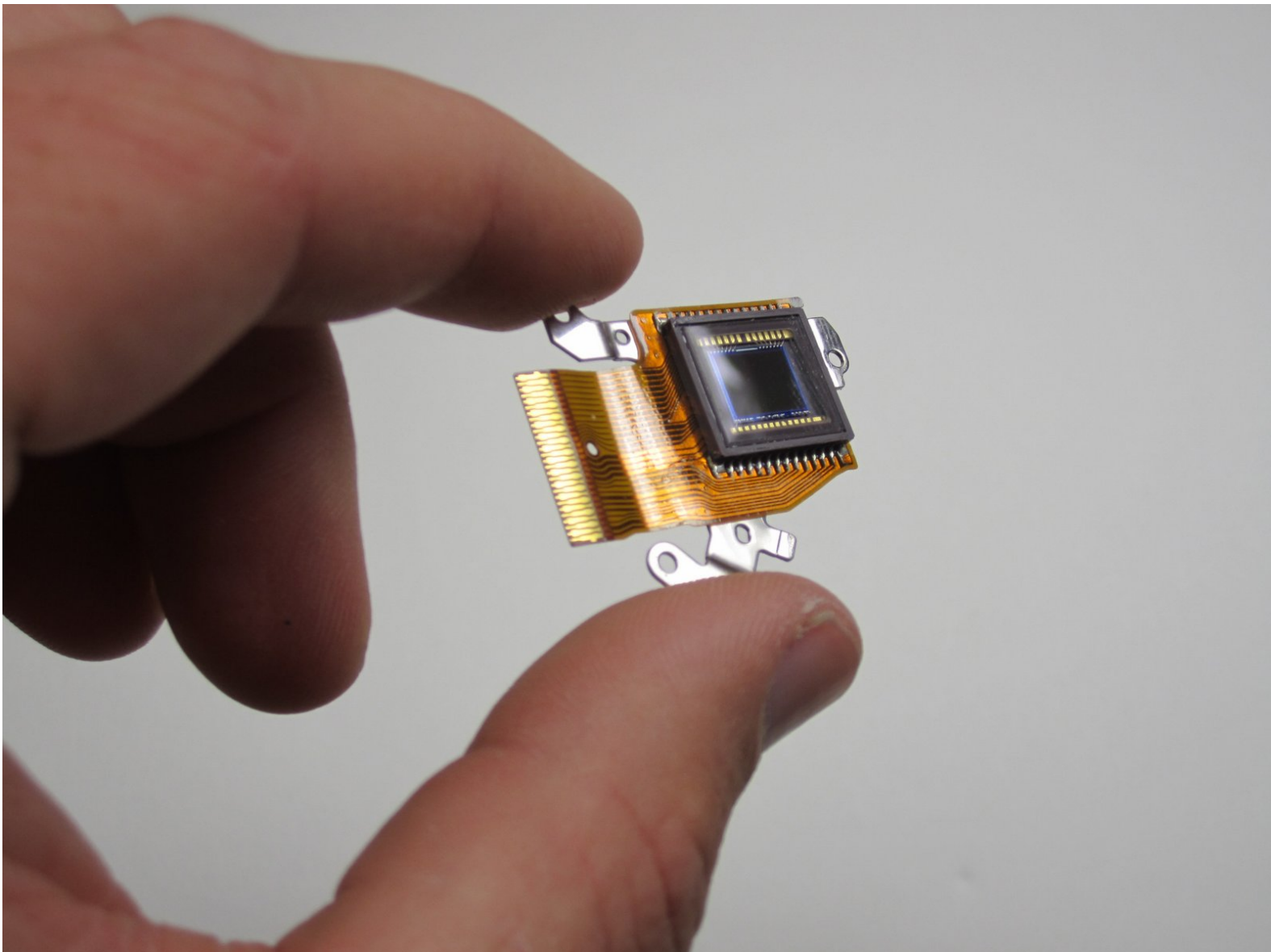




# Canon Powershot SD550 Image Sensor Replacement

This guide will show you how to take apart your PowerShot SD550 camera and replace the image sensor.

Written By: Matthew Theiss



---

## INTRODUCTION

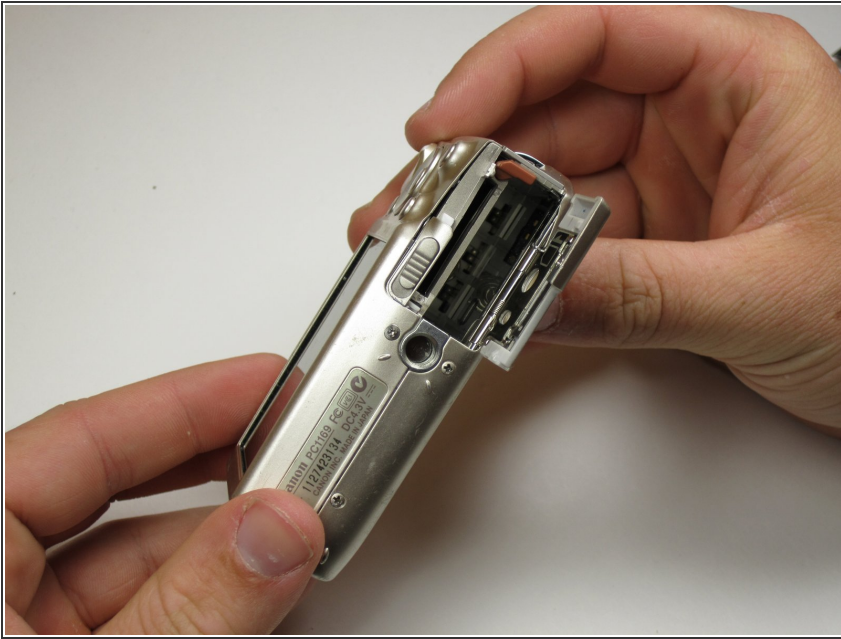
The image sensor is what actually captures the image when you take a picture. If damaged, the sensor can cause blurred, distorted, or even black pictures to be taken.

---

### TOOLS:

- [Precision Utility Knife](#) (1)
  - [Phillips #00 Screwdriver](#) (1)
-

## Step 1 — Outer Case



- In preparation for disassembly, the battery and SD Card need to be removed from the camera. You can access both the battery and the SD card through the door on the bottom of the camera.

## Step 2



- While being careful to remember the original location of each screw, remove the three 0.15 inch screws on the underside of the camera.
- ⓘ Each of the screws is slightly different, so it is important that you note the original location of each screw.

### Step 3



- Find the next two screws on the right side of the camera. One of them is hidden under the USB port cover. The upper screw is .125 inches long, while the lower screw measures .085 inches.
- Remove both screws, then carefully lift the side panel off.
- Underneath the side panel, there is a .07 inch screw. Remove it.

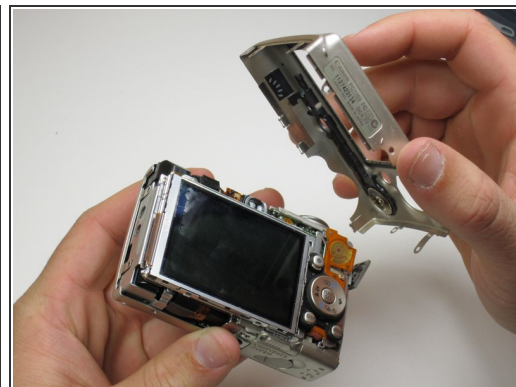
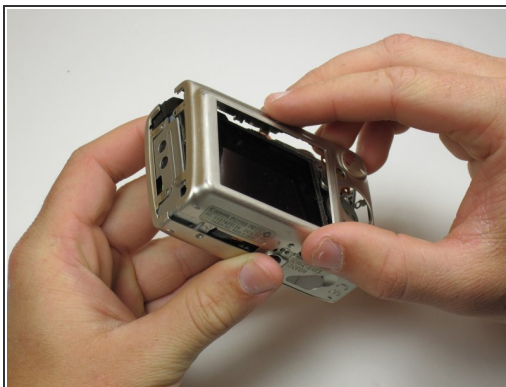
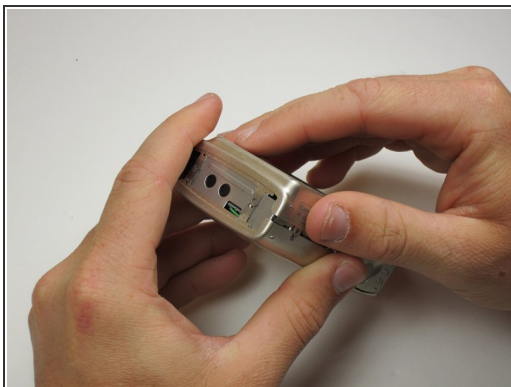
### Step 4



- On the left side of the camera, there are two .085 inch screws. Remove these, then lift the plate from the camera.

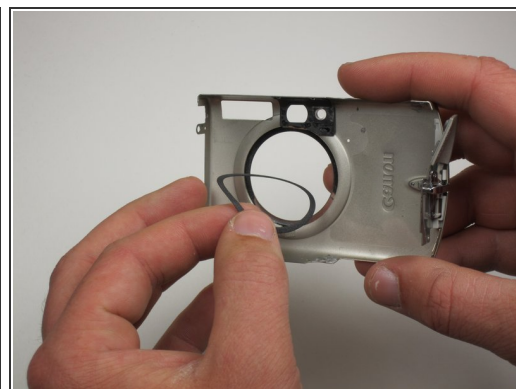


## Step 5



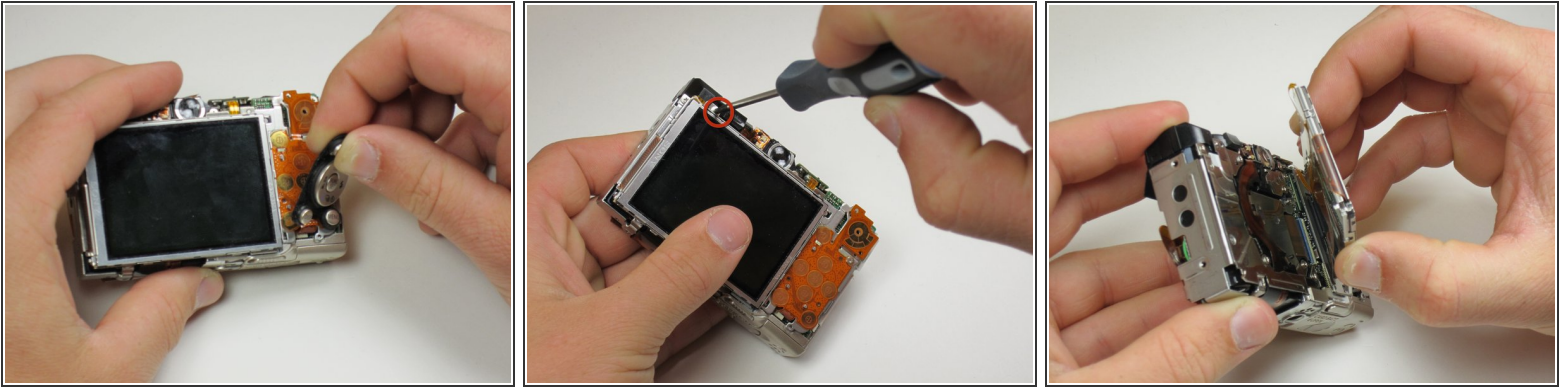
- Now the camera body is loose. gently lift the rear of the case to remove it from the camera.

## Step 6



- Next, remove the front of the camera body. Be sure to keep track of the rubber ring.
- You have now successfully removed the outer case.

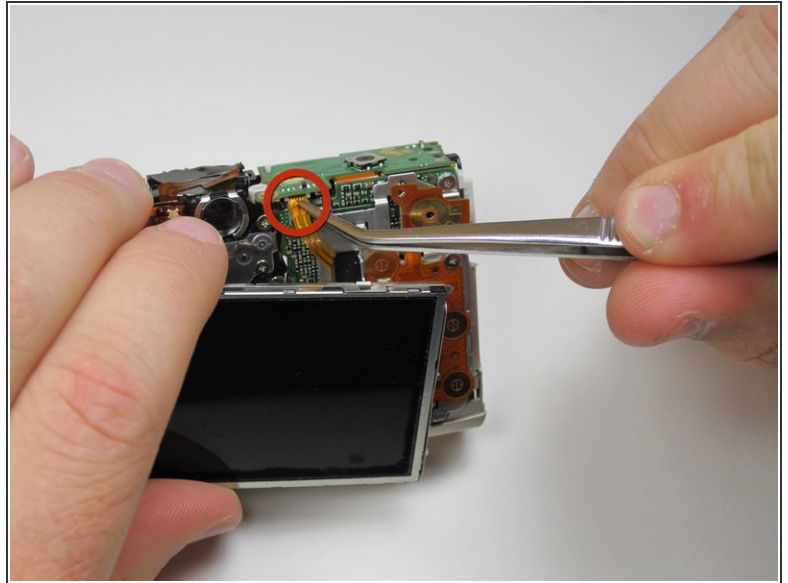
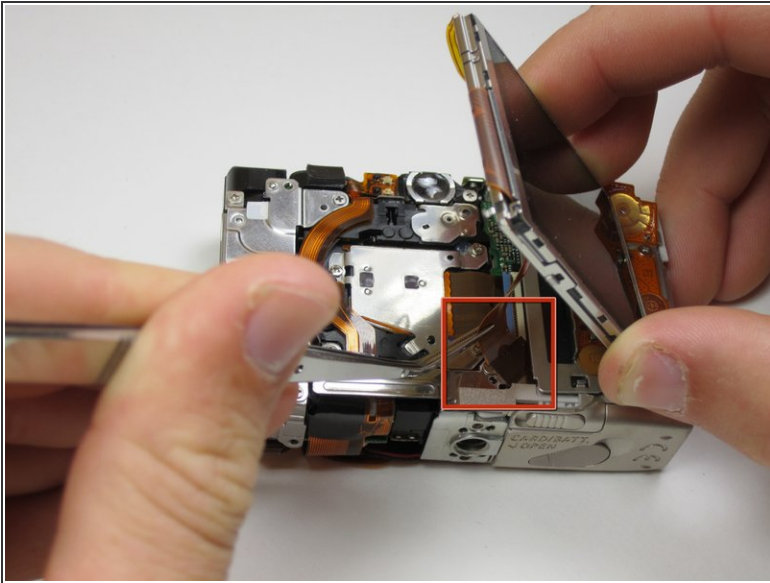
## Step 7 — LCD Screen



- Next, peel the navigation buttons from the button panel and set them aside.
- To free the LCD display, remove the .113 inch screw in the top left corner.
- Then, rotate the screen clockwise until it lifts away from the camera.

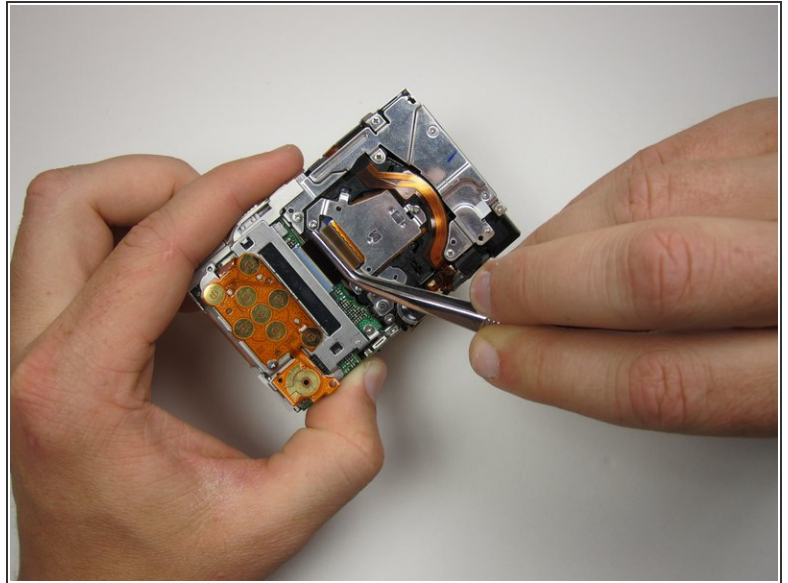
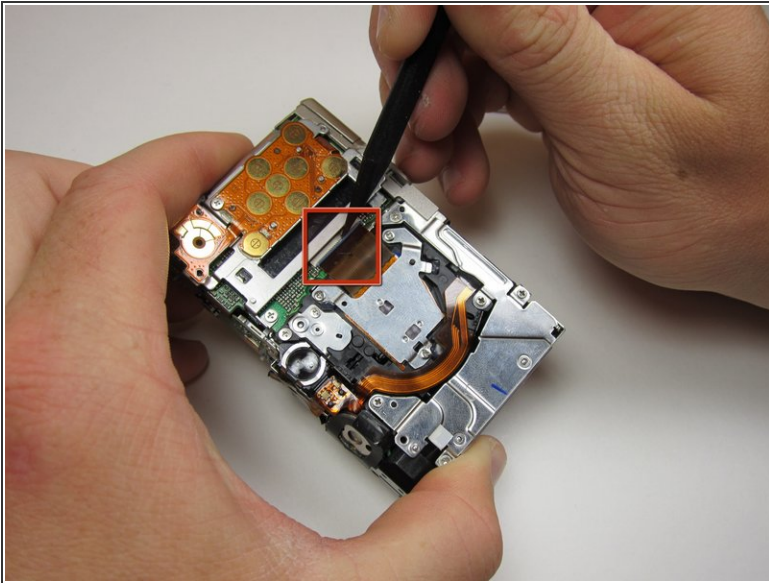
⚠ There are two ribbon cables attached to the rear of the screen. Do not try to pull the screen off at this point.

## Step 8



- To unplug the ribbon cables, pull them straight out of their plugs. Do this gently to avoid damaging the connections.
- After disconnecting both cables, pull the screen away from the camera to remove it.

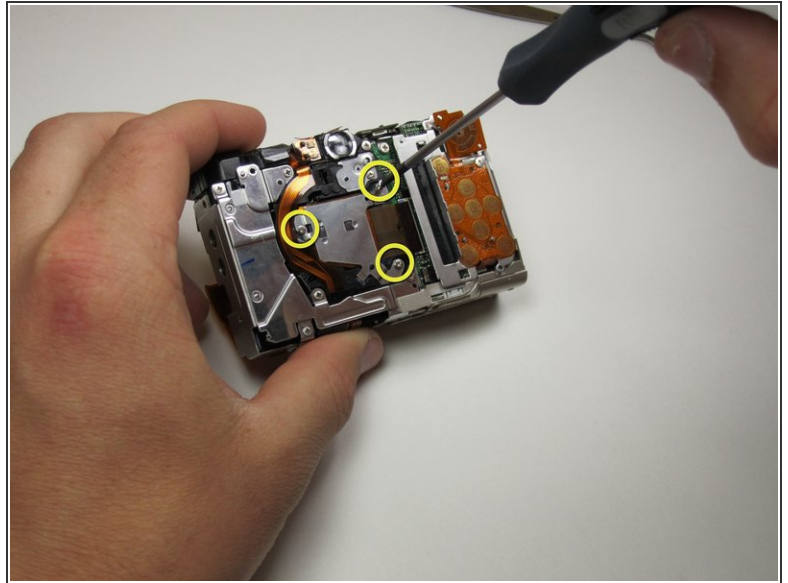
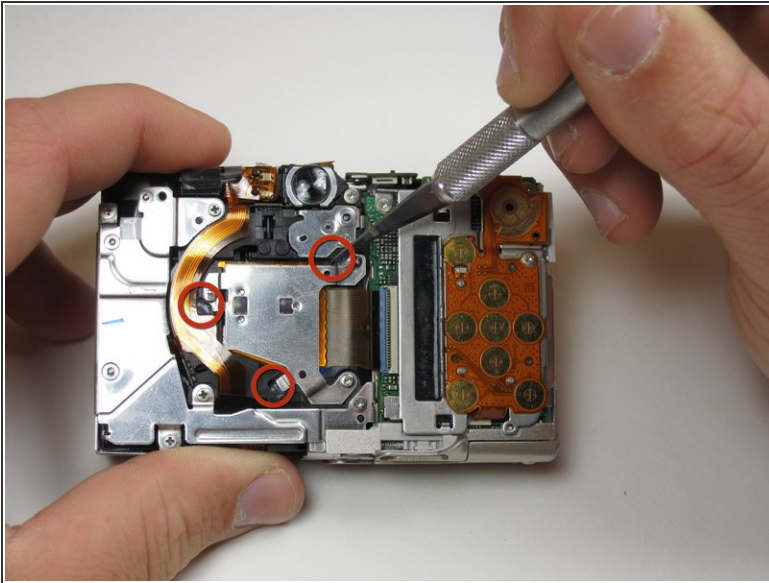
## Step 9 — Image Sensor



- Now the photo sensor is exposed. In order to remove the ribbon cable from its port, first flip up the blue locking mechanism.
- After the cable is unlocked, it easily pulls free.

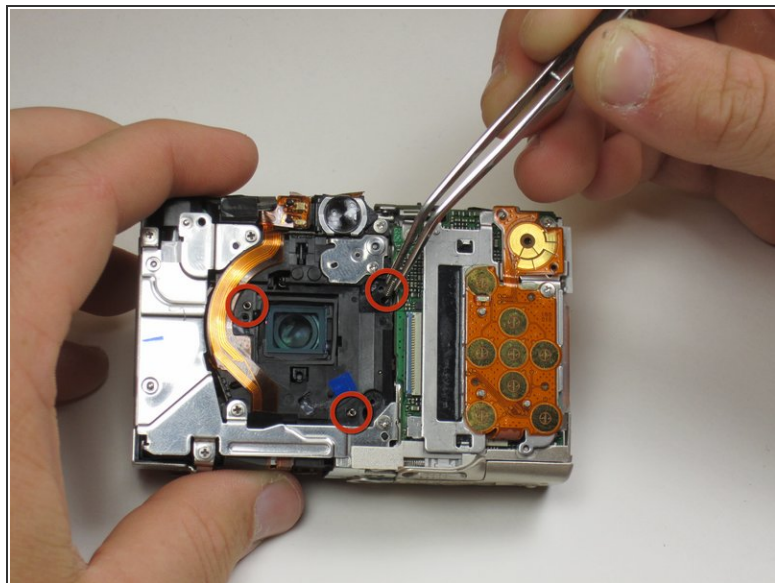
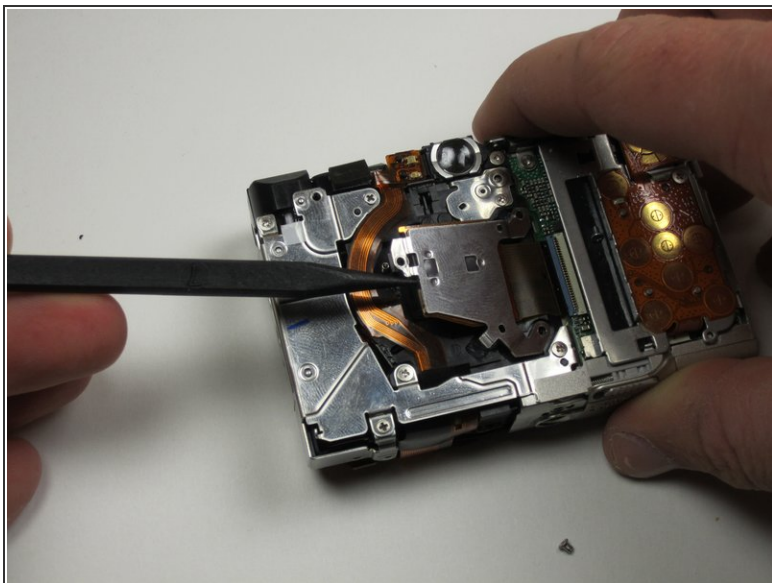


## Step 10



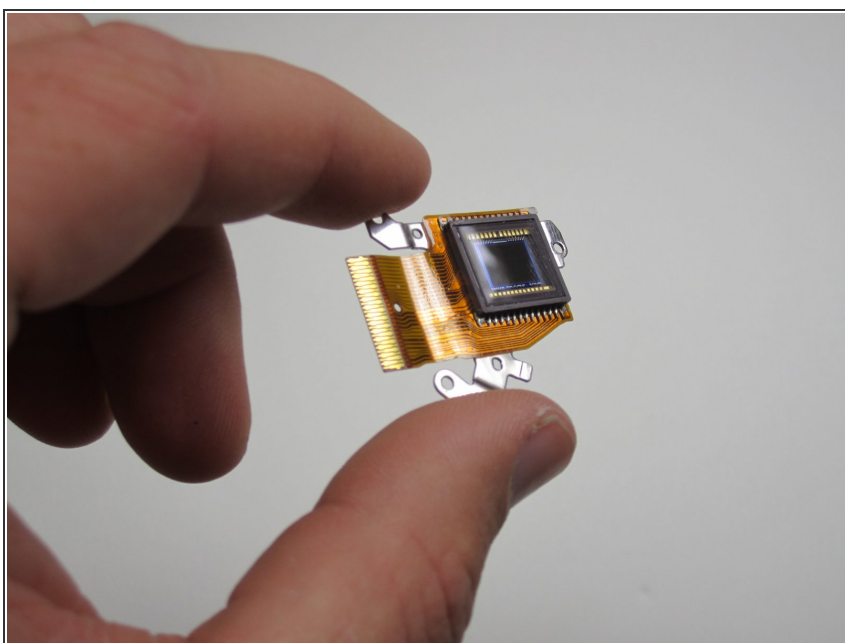
- In order to remove the photo sensor, you will have to cut through glue and remove screws.
  - Use a knife to carefully slice through the glue at the three points indicated. Try not to cut through anything but the glue to avoid damage.
- ⚠ WARNING: Knives are sharp. Treat them with respect.
- Now remove the three .15 inch screws holding the photo sensor to the camera frame.

## Step 11



- Now you can carefully lift up the image sensor and remove it from the camera.
- Be careful not to lose the three small springs or the rubber grommet that lie beneath the sensor.

## Step 12



- You have now successfully removed the image sensor.

To reassemble your device, follow these instructions in reverse order.