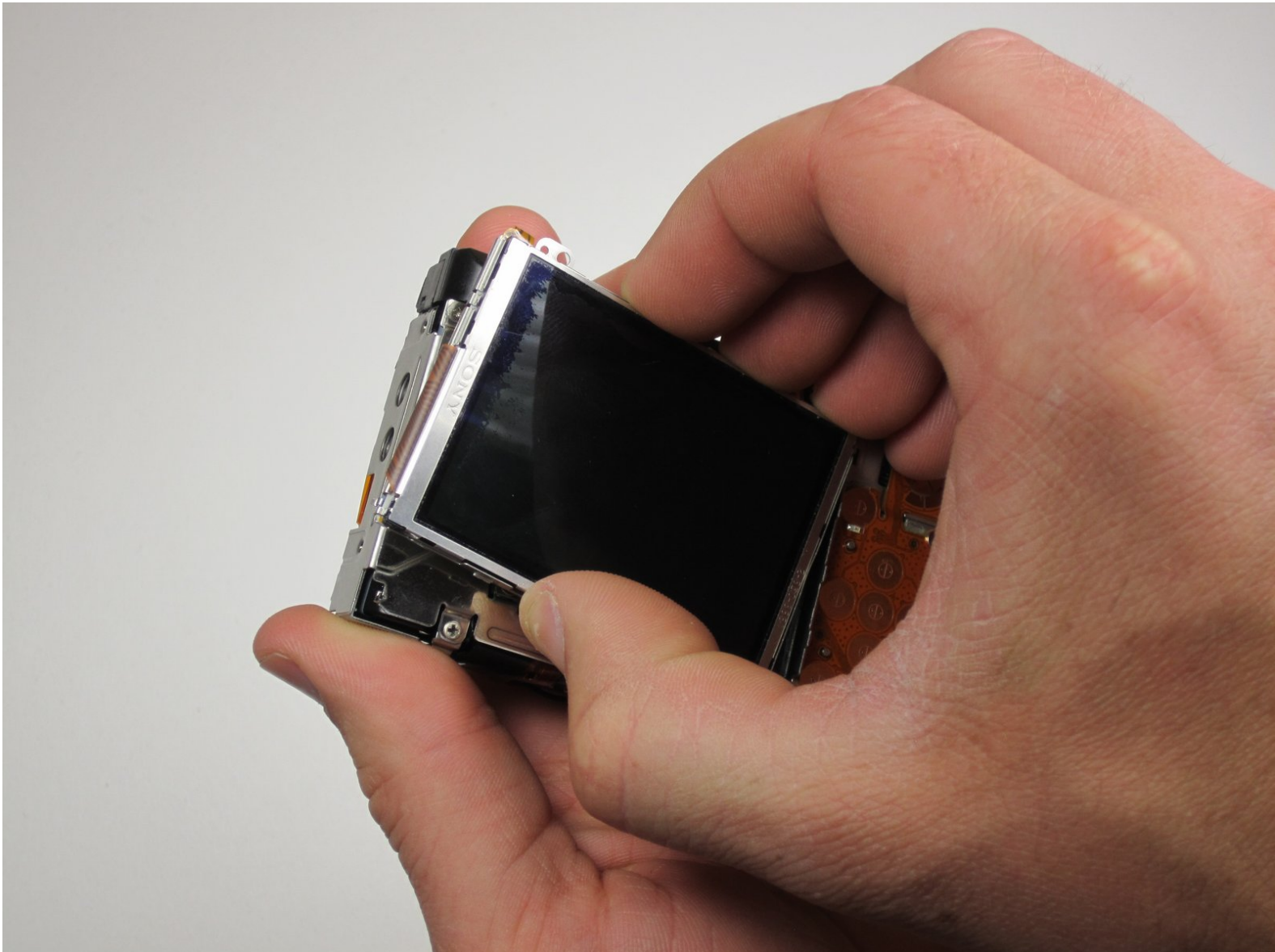




Canon Powershot SD550 LCD Screen Replacement

This guide will help you take apart the Canon PowerShot SD550 and replace the LCD screen.

Written By: Vivian Su



INTRODUCTION

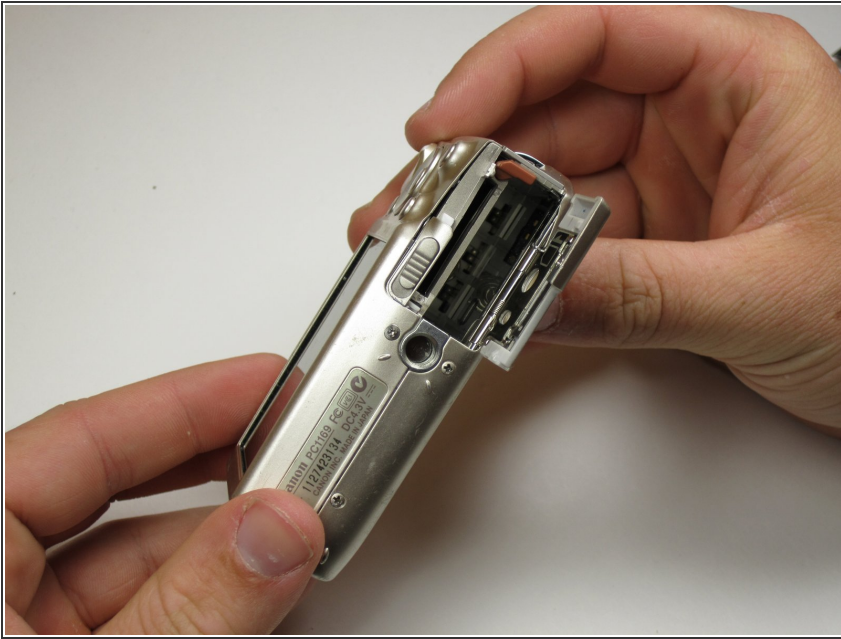
A cracked LCD screen is a prevalent problem in digital cameras. But, before you spend money on a new LCD screen, make sure the camera still works by taking a few pictures and uploading them to your computer. A cracked LCD will not affect the quality of the pictures. You do not want to try to replace the LCD if something else is broken.



TOOLS:

- [Phillips #00 Screwdriver](#) (1)
 - [Spudger](#) (1)
-

Step 1 — Outer Case



- In preparation for disassembly, the battery and SD Card need to be removed from the camera. You can access both the battery and the SD card through the door on the bottom of the camera.

Step 2



- While being careful to remember the original location of each screw, remove the three 0.15 inch screws on the underside of the camera.
- ⓘ Each of the screws is slightly different, so it is important that you note the original location of each screw.

Step 3



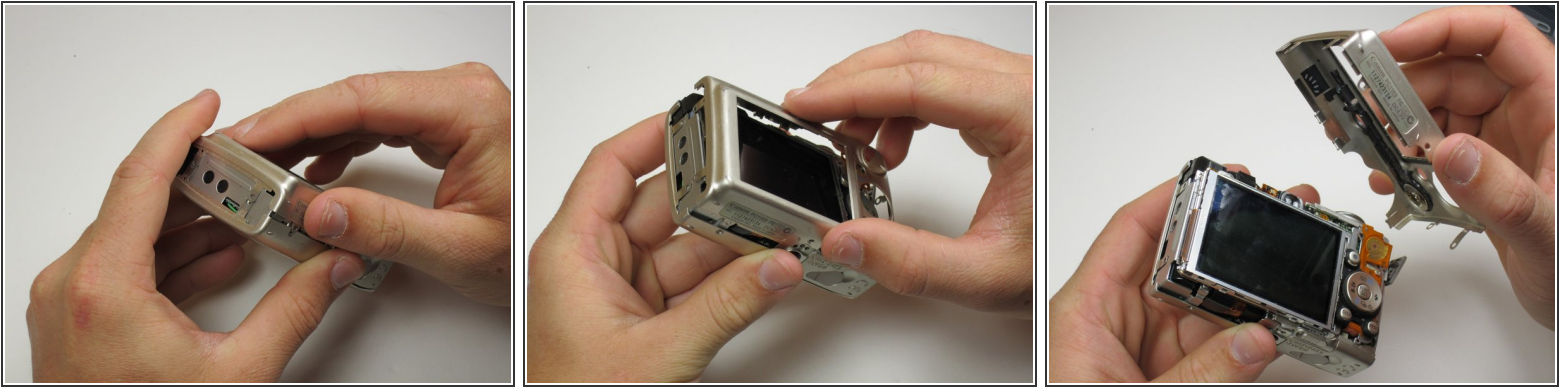
- Find the next two screws on the right side of the camera. One of them is hidden under the USB port cover. The upper screw is .125 inches long, while the lower screw measures .085 inches.
- Remove both screws, then carefully lift the side panel off.
- Underneath the side panel, there is a .07 inch screw. Remove it.

Step 4



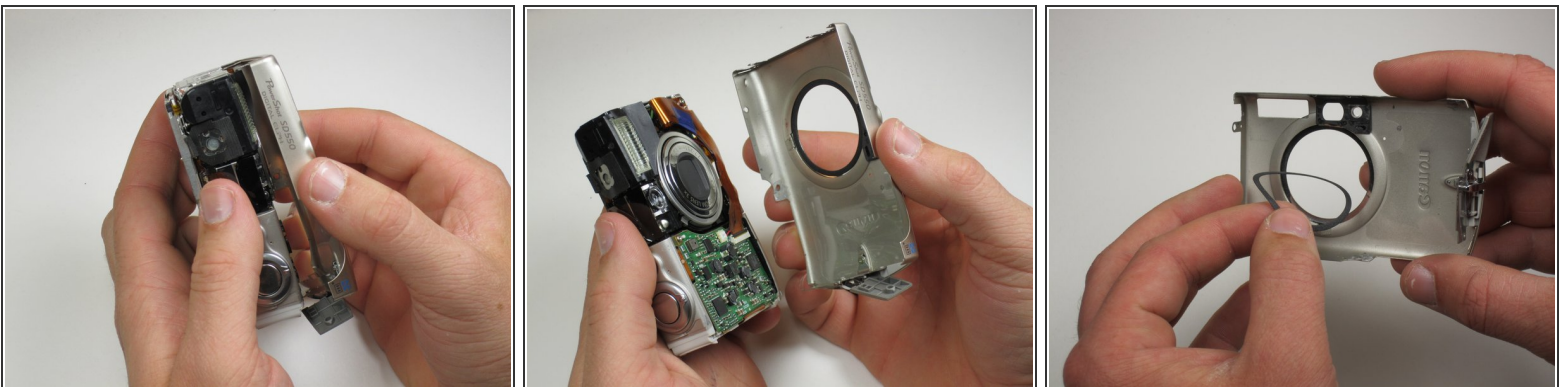
- On the left side of the camera, there are two .085 inch screws. Remove these, then lift the plate from the camera.

Step 5



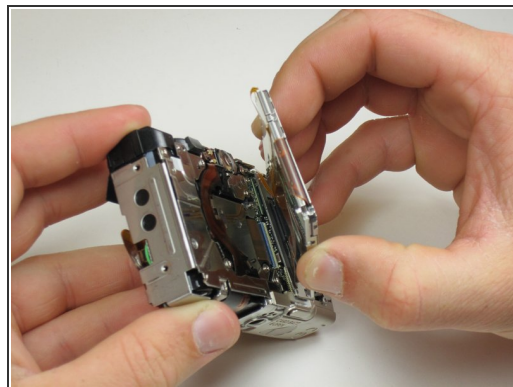
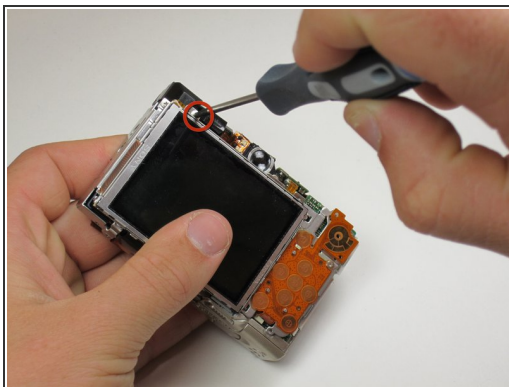
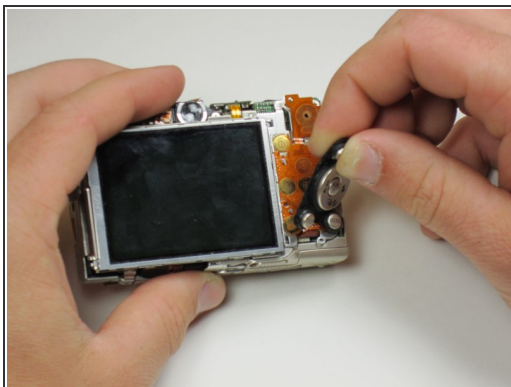
- Now the camera body is loose. gently lift the rear of the case to remove it from the camera.

Step 6



- Next, remove the front of the camera body. Be sure to keep track of the rubber ring.
- You have now successfully removed the outer case.

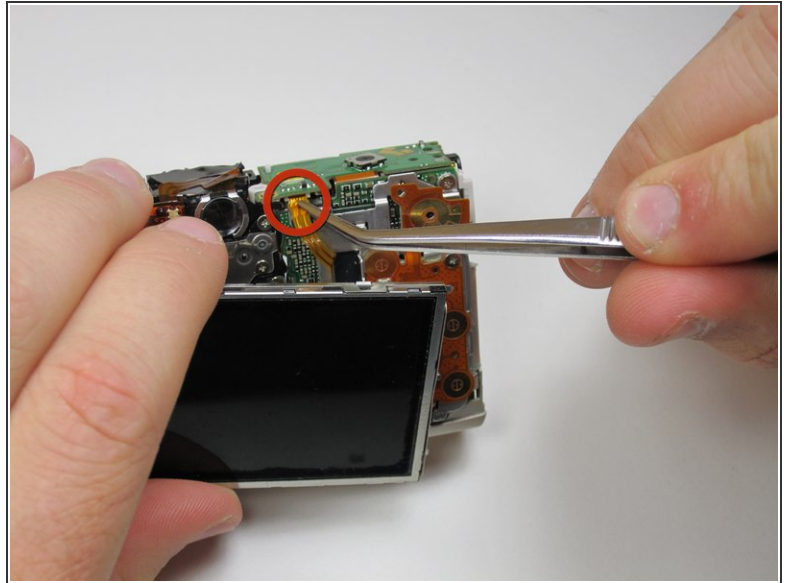
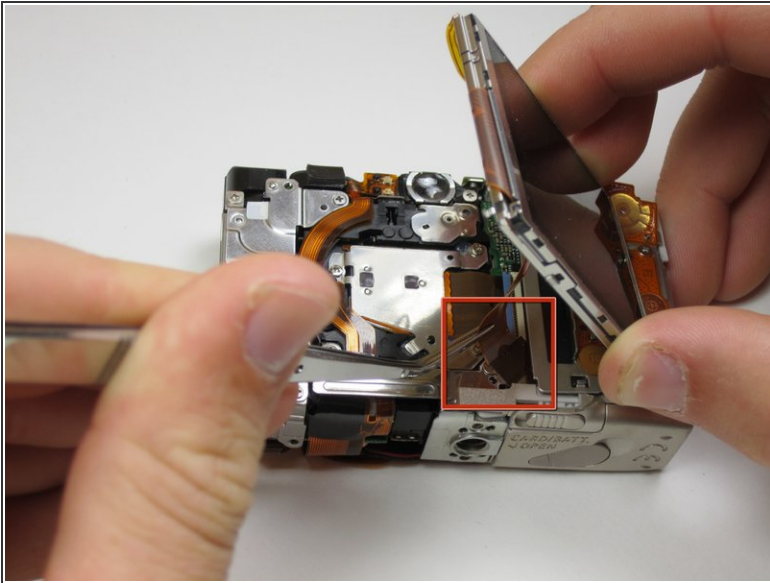
Step 7 — LCD Screen



- Next, peel the navigation buttons from the button panel and set them aside.
- To free the LCD display, remove the .113 inch screw in the top left corner.
- Then, rotate the screen clockwise until it lifts away from the camera.

⚠ There are two ribbon cables attached to the rear of the screen. Do not try to pull the screen off at this point.

Step 8



- To unplug the ribbon cables, pull them straight out of their plugs. Do this gently to avoid damaging the connections.
- After disconnecting both cables, pull the screen away from the camera to remove it.

To reassemble your device, follow these instructions in reverse order.