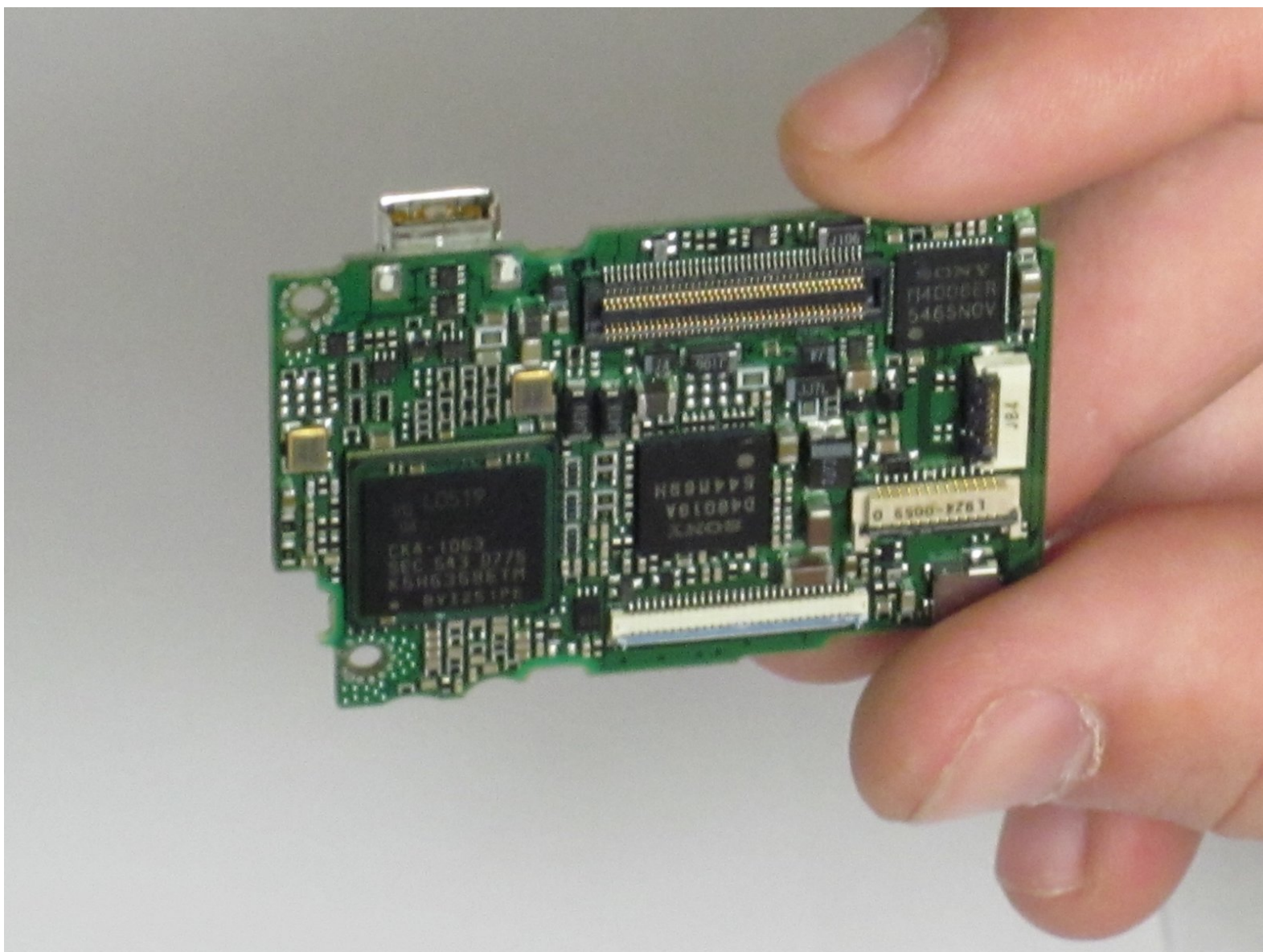




Canon Powershot SD550 Motherboard Replacement

This is a step-by-step guide on how to disassemble a Canon Powershot SD550 in order to replace the main system board.

Written By: Luke Thompson



INTRODUCTION

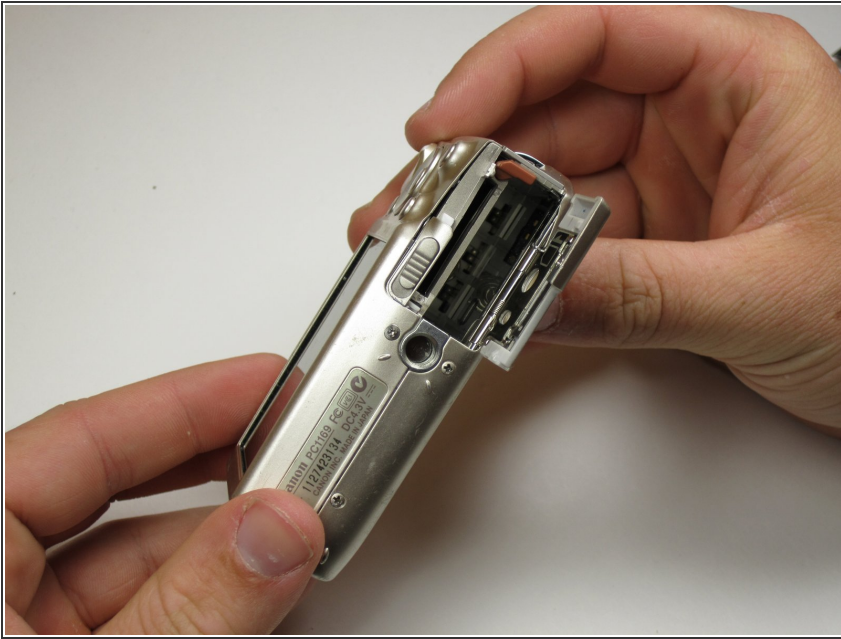
This guide provides the steps to follow to disassemble the Canon Powershot SD550 down to the main system board. Removal of the main system board is required if the existing board has failed, is in need of cleaning or requires maintenance.



TOOLS:

- [Phillips #00 Screwdriver](#) (1)
 - [Spudger](#) (1)
-

Step 1 — Outer Case



- In preparation for disassembly, the battery and SD Card need to be removed from the camera. You can access both the battery and the SD card through the door on the bottom of the camera.

Step 2



- While being careful to remember the original location of each screw, remove the three 0.15 inch screws on the underside of the camera.
- ⓘ Each of the screws is slightly different, so it is important that you note the original location of each screw.

Step 3



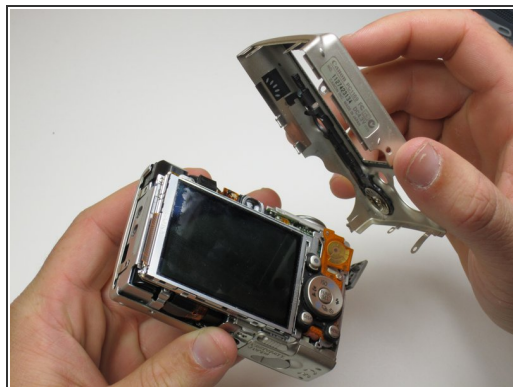
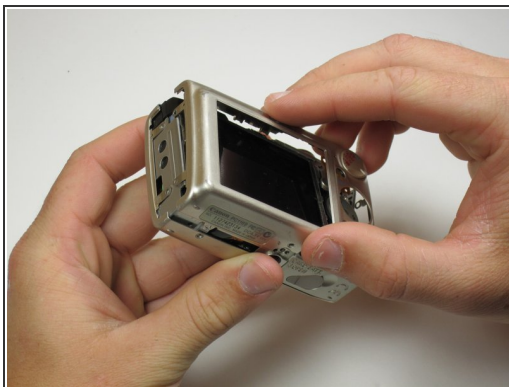
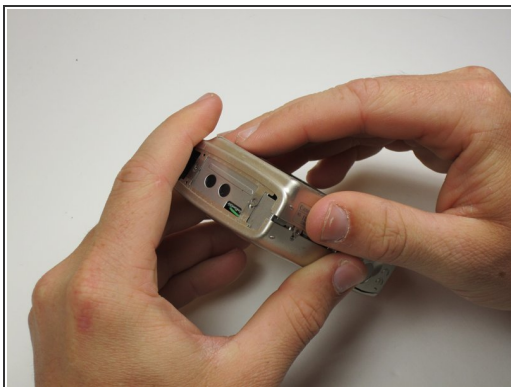
- Find the next two screws on the right side of the camera. One of them is hidden under the USB port cover. The upper screw is .125 inches long, while the lower screw measures .085 inches.
- Remove both screws, then carefully lift the side panel off.
- Underneath the side panel, there is a .07 inch screw. Remove it.

Step 4



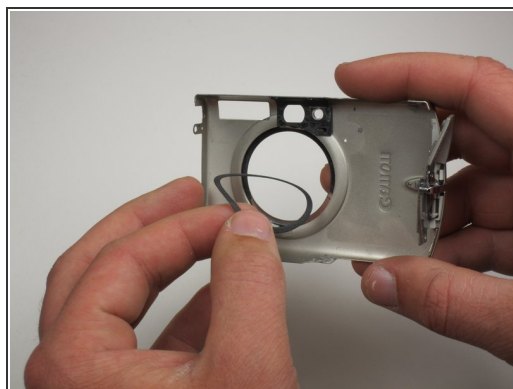
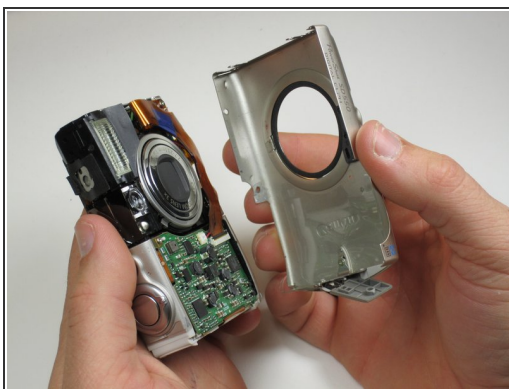
- On the left side of the camera, there are two .085 inch screws. Remove these, then lift the plate from the camera.

Step 5



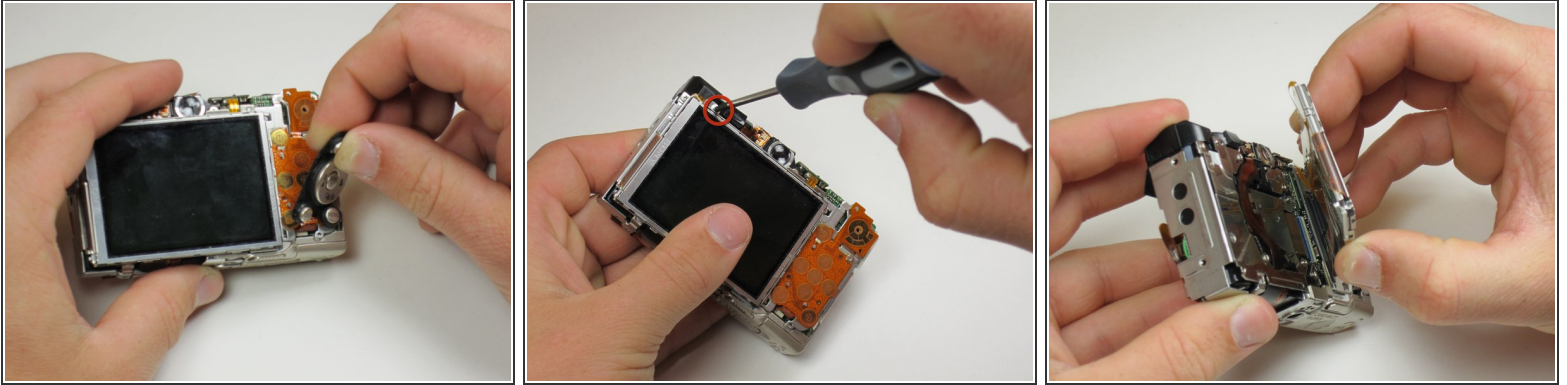
- Now the camera body is loose. gently lift the rear of the case to remove it from the camera.

Step 6



- Next, remove the front of the camera body. Be sure to keep track of the rubber ring.
- You have now successfully removed the outer case.

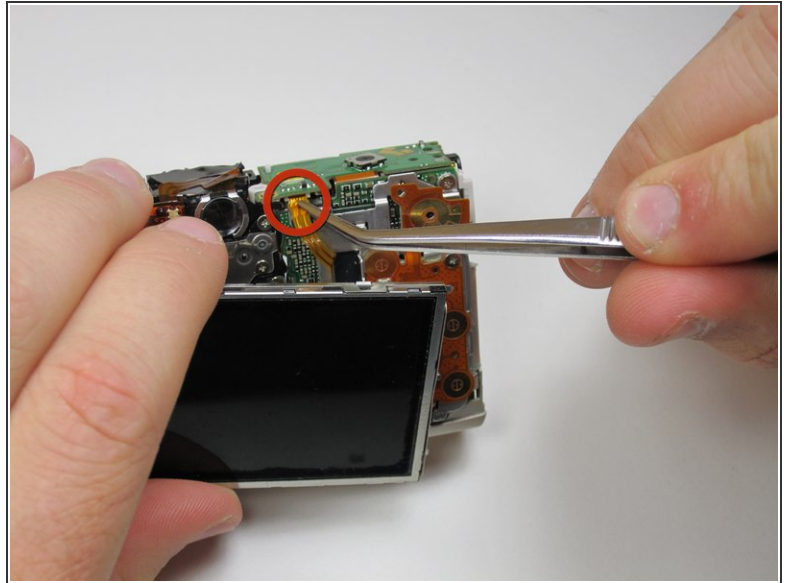
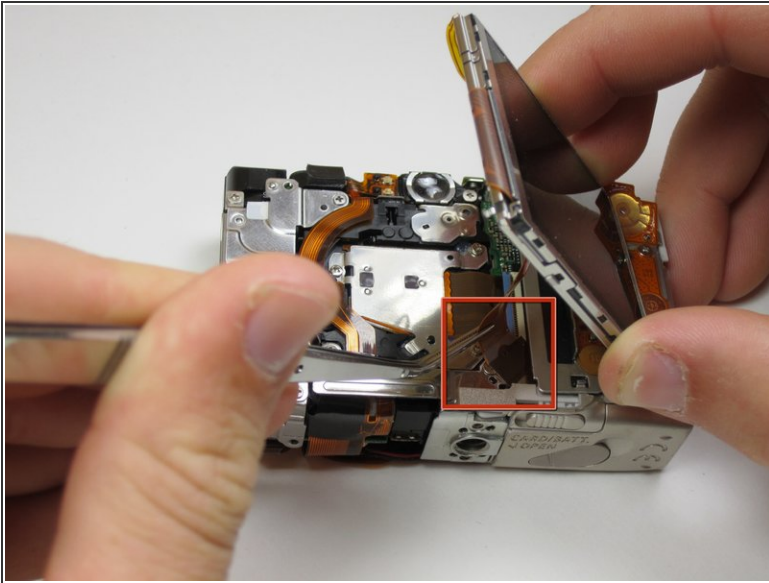
Step 7 — LCD Screen



- Next, peel the navigation buttons from the button panel and set them aside.
- To free the LCD display, remove the .113 inch screw in the top left corner.
- Then, rotate the screen clockwise until it lifts away from the camera.

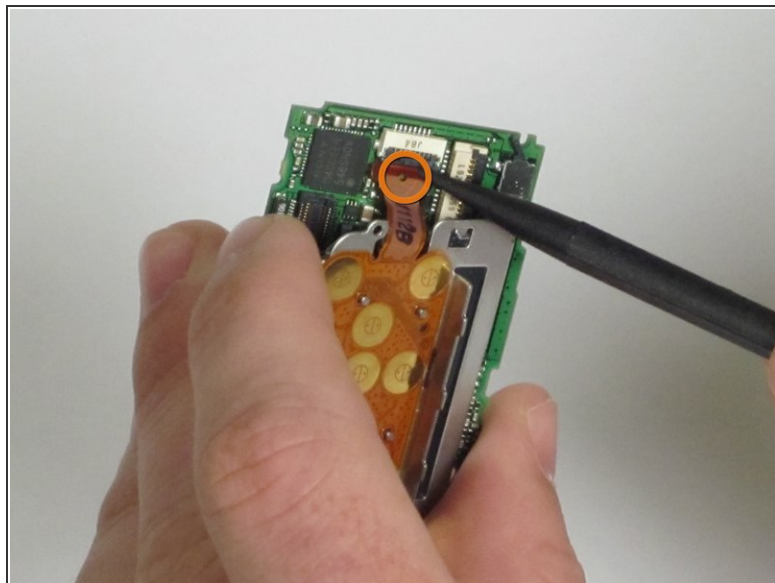
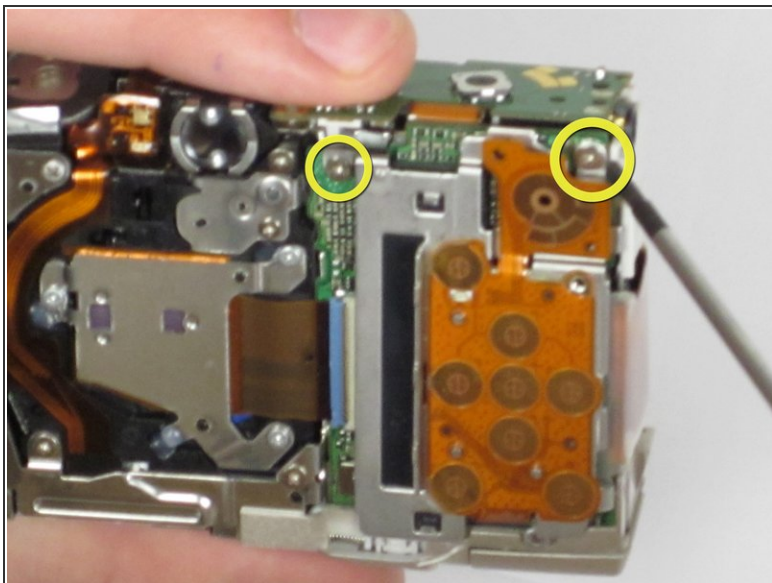
⚠ There are two ribbon cables attached to the rear of the screen. Do not try to pull the screen off at this point.

Step 8



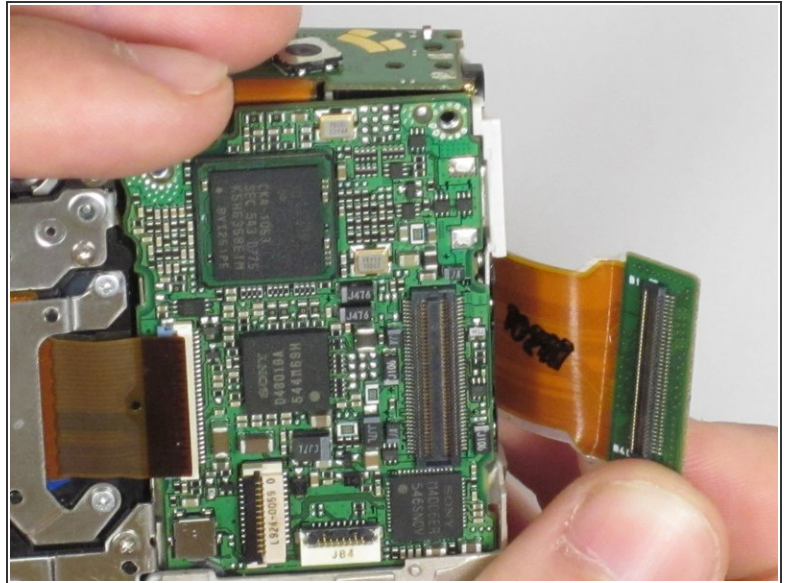
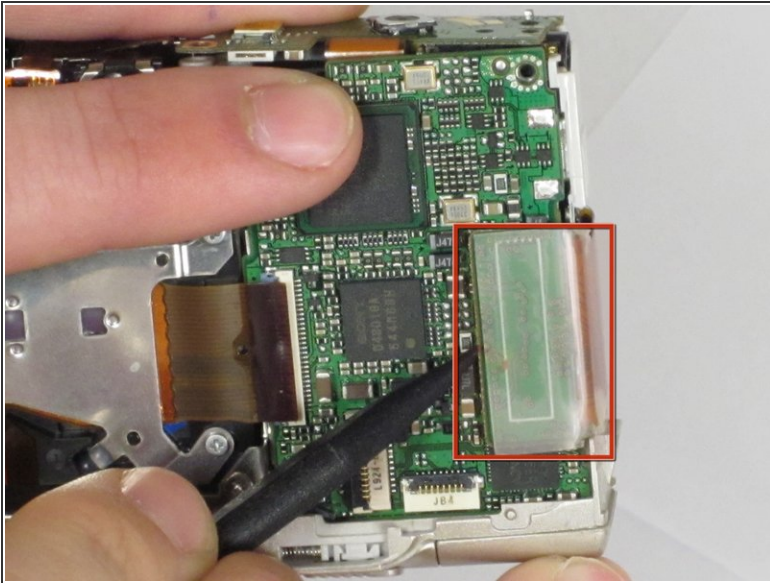
- To unplug the ribbon cables, pull them straight out of their plugs. Do this gently to avoid damaging the connections.
- After disconnecting both cables, pull the screen away from the camera to remove it.

Step 9 — Motherboard



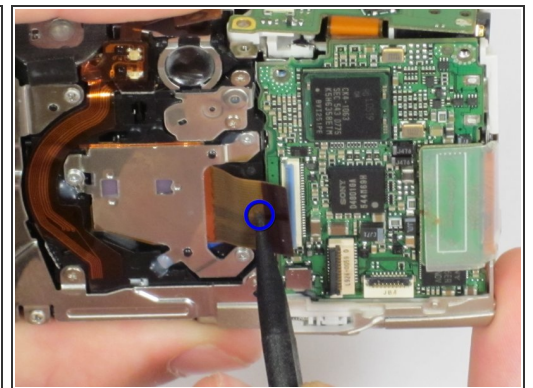
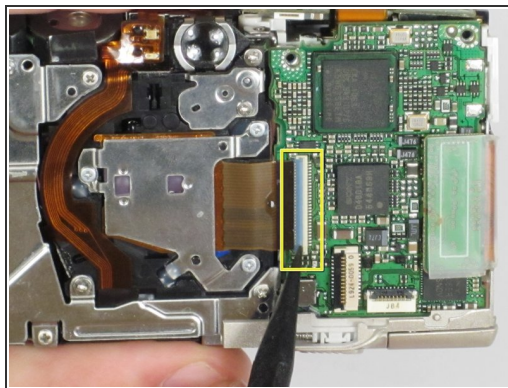
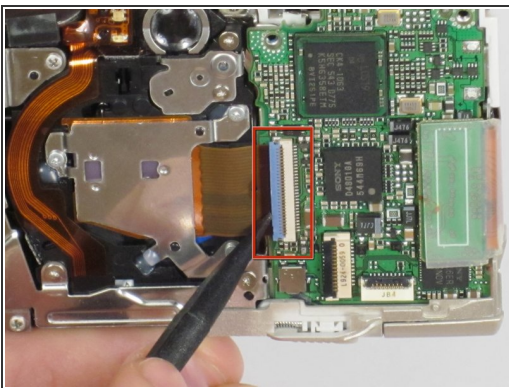
- Unscrew the two .135 inch screws still holding the button contact panel onto the camera.
- Using the spudger, disconnect the ribbon cable attaching the button contact panel to the motherboard.
- Gently pull the button contact panel away from the motherboard.

Step 10



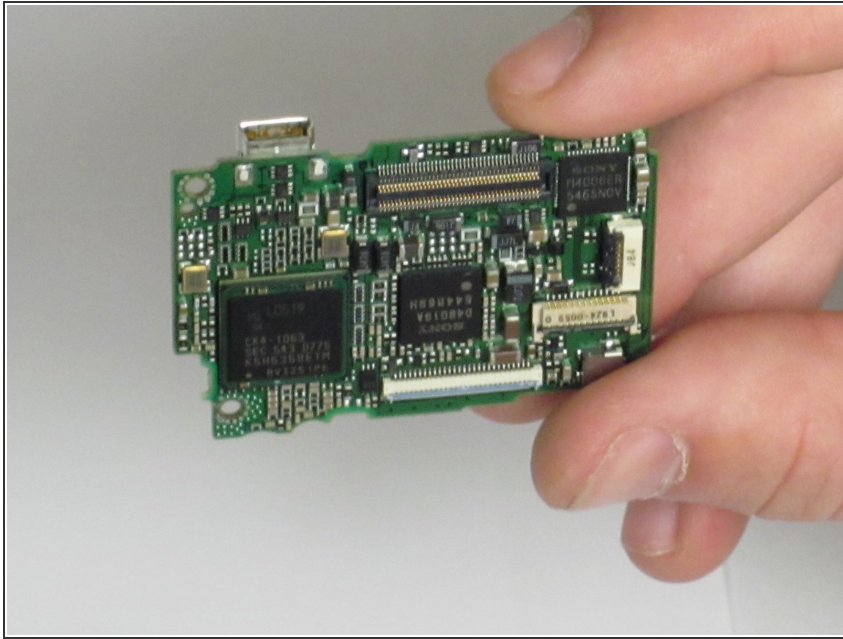
- Underneath the button contact panel, you will find a large connector.
- Using the spudger as leverage, unplug the connector and pull it away from the motherboard.

Step 11



- The last ribbon is held in place by the blue flap. Insert the spudger under the blue flap.
- Using the spudger as leverage, flip the blue flap up, unlocking the ribbon.
- Place the spudger into the hole in the ribbon and pull the ribbon away from the connector.

Step 12



- The motherboard is now disconnected from the camera.
- Remove the motherboard by pulling it out with either tweezers or the spudger.

To reassemble your device, follow these instructions in reverse order.