



Canon Powershot SD550 Outer Case Replacement

This guide will help you remove the outer case for repairs or replacement.

Written By: Matthew Theiss



INTRODUCTION

The outer case of the PowerShot SD550 is the part that takes the greatest beating. Every time the camera falls, it lands on its case. Some common problems include cracking and paint wear.

TOOLS:

- [Phillips #00 Screwdriver](#) (1)
-

Step 1 — Outer Case



- In preparation for disassembly, the battery and SD Card need to be removed from the camera. You can access both the battery and the SD card through the door on the bottom of the camera.

Step 2



- While being careful to remember the original location of each screw, remove the three 0.15 inch screws on the underside of the camera.
- ⓘ Each of the screws is slightly different, so it is important that you note the original location of each screw.

Step 3



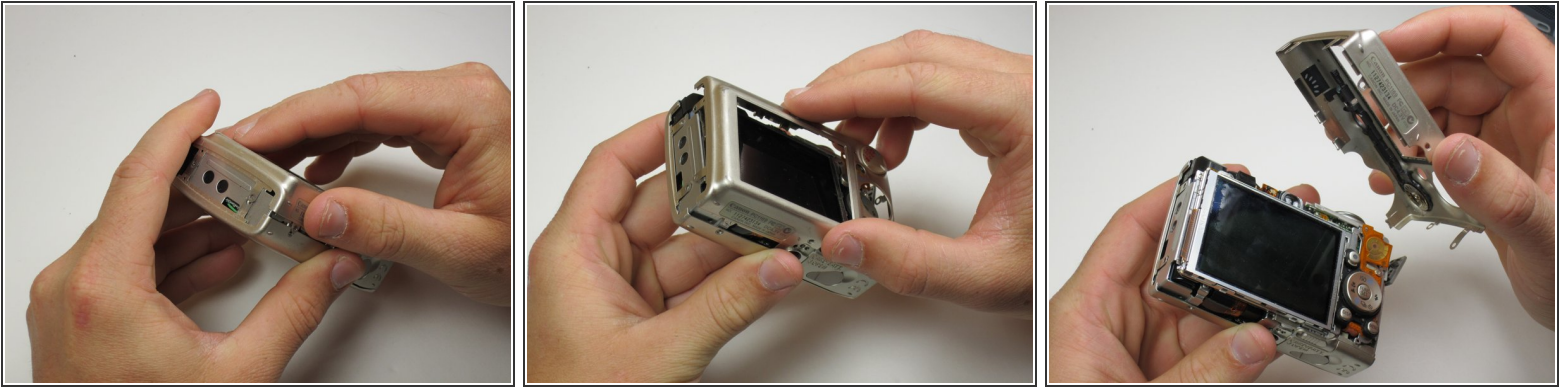
- Find the next two screws on the right side of the camera. One of them is hidden under the USB port cover. The upper screw is .125 inches long, while the lower screw measures .085 inches.
- Remove both screws, then carefully lift the side panel off.
- Underneath the side panel, there is a .07 inch screw. Remove it.

Step 4



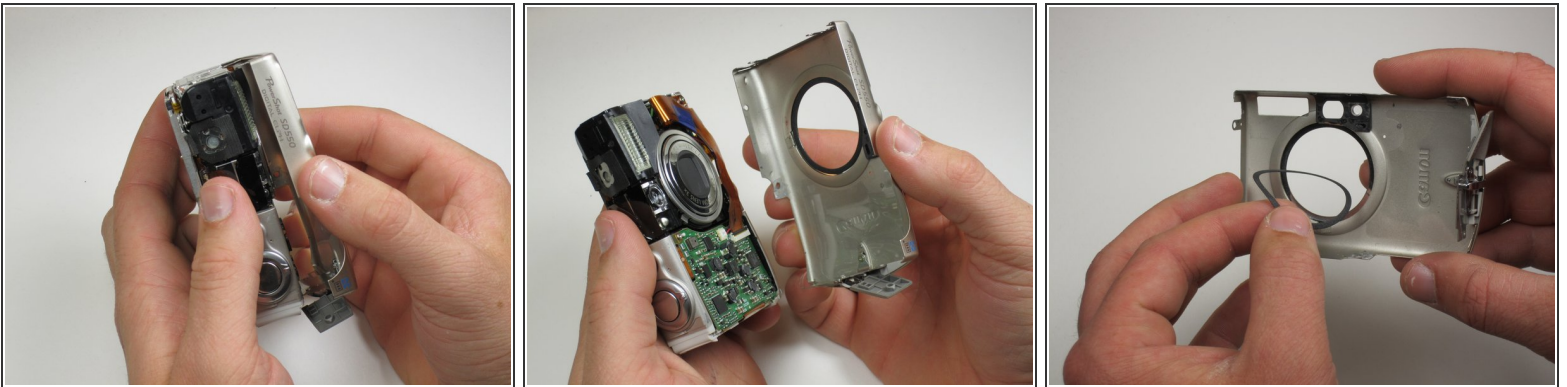
- On the left side of the camera, there are two .085 inch screws. Remove these, then lift the plate from the camera.

Step 5



- Now the camera body is loose. gently lift the rear of the case to remove it from the camera.

Step 6



- Next, remove the front of the camera body. Be sure to keep track of the rubber ring.
- You have now successfully removed the outer case.

To reassemble your device, follow these instructions in reverse order.