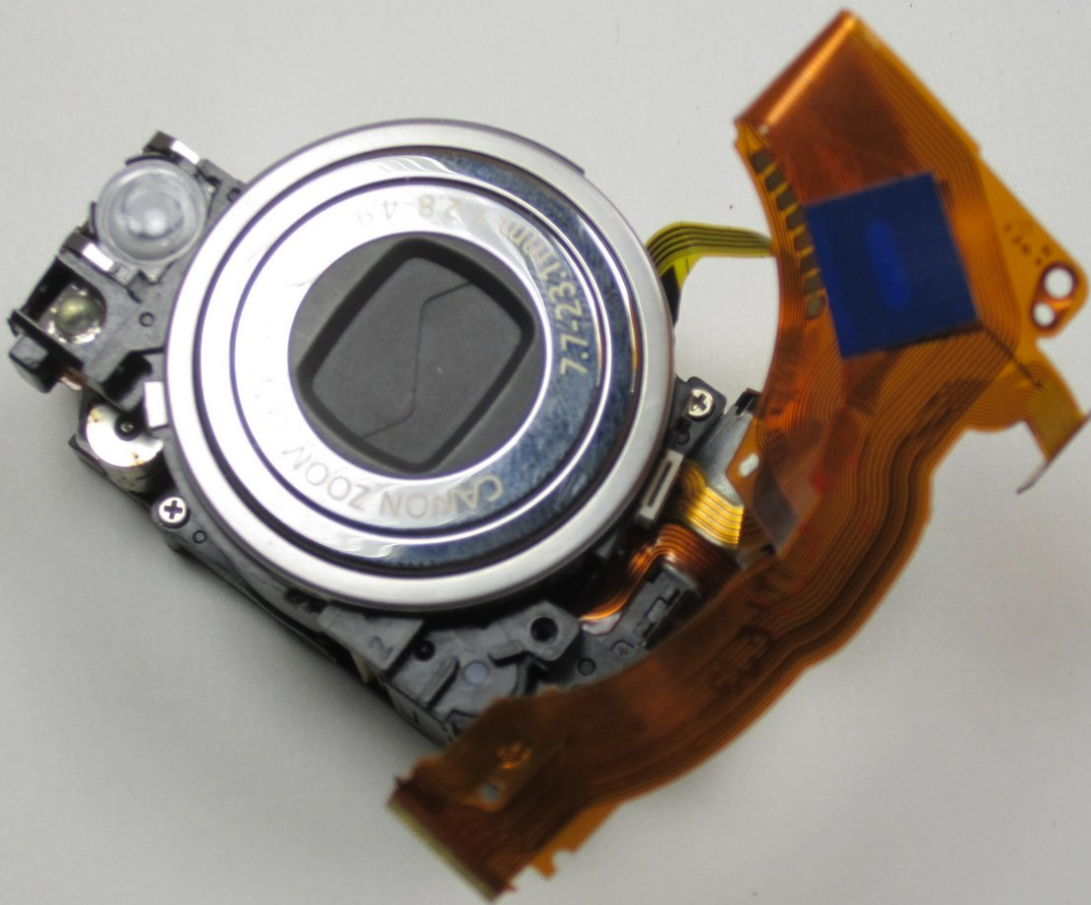




Canon Powershot SD550 Zoom Lens Assembly Replacement

This repair guide will show you how to take apart the PowerShot SD550 and replace the zoom lens.

Written By: Matthew Theiss



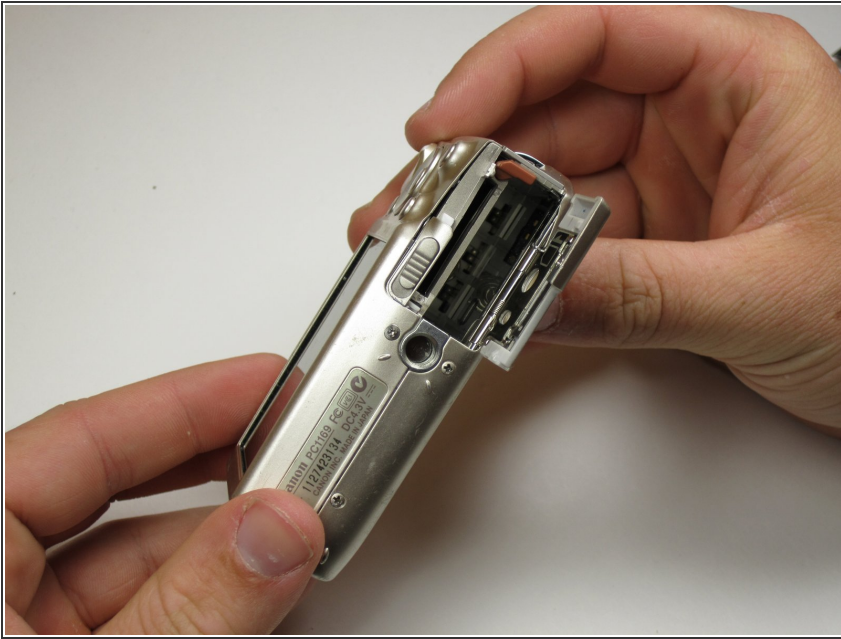
INTRODUCTION

The lens is the device that focuses the image seen by a camera. Because it is the only moving part, it can easily malfunction, causing blurry pictures or even a camera error.

TOOLS:

- [Precision Utility Knife](#) (1)
 - [Phillips #00 Screwdriver](#) (1)
 - [Spudger](#) (1)
-

Step 1 — Outer Case



- In preparation for disassembly, the battery and SD Card need to be removed from the camera. You can access both the battery and the SD card through the door on the bottom of the camera.

Step 2



- While being careful to remember the original location of each screw, remove the three 0.15 inch screws on the underside of the camera.
- ⓘ Each of the screws is slightly different, so it is important that you note the original location of each screw.

Step 3



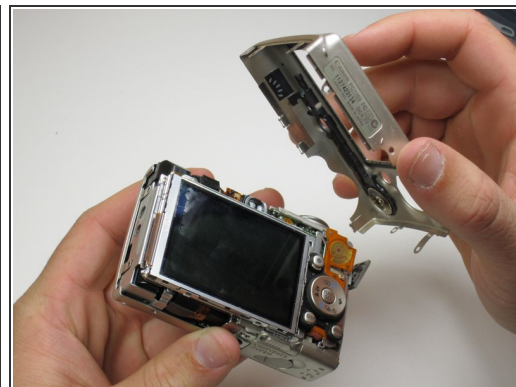
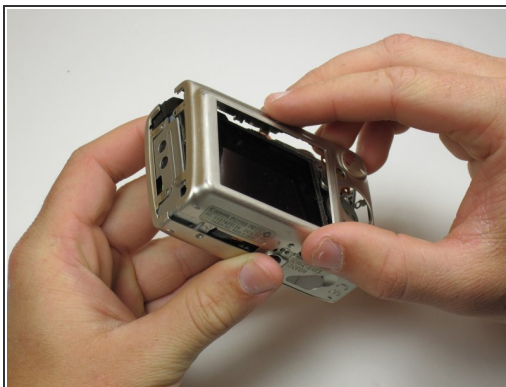
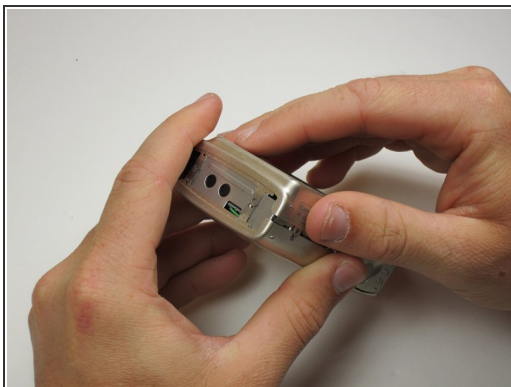
- Find the next two screws on the right side of the camera. One of them is hidden under the USB port cover. The upper screw is .125 inches long, while the lower screw measures .085 inches.
- Remove both screws, then carefully lift the side panel off.
- Underneath the side panel, there is a .07 inch screw. Remove it.

Step 4



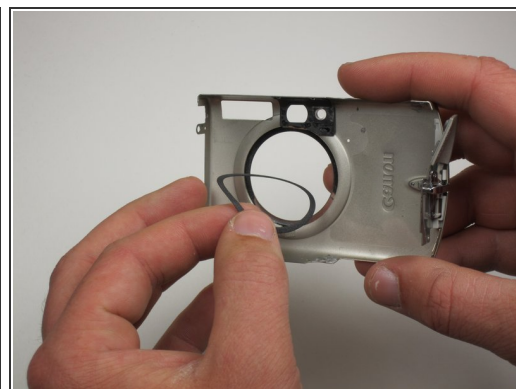
- On the left side of the camera, there are two .085 inch screws. Remove these, then lift the plate from the camera.

Step 5



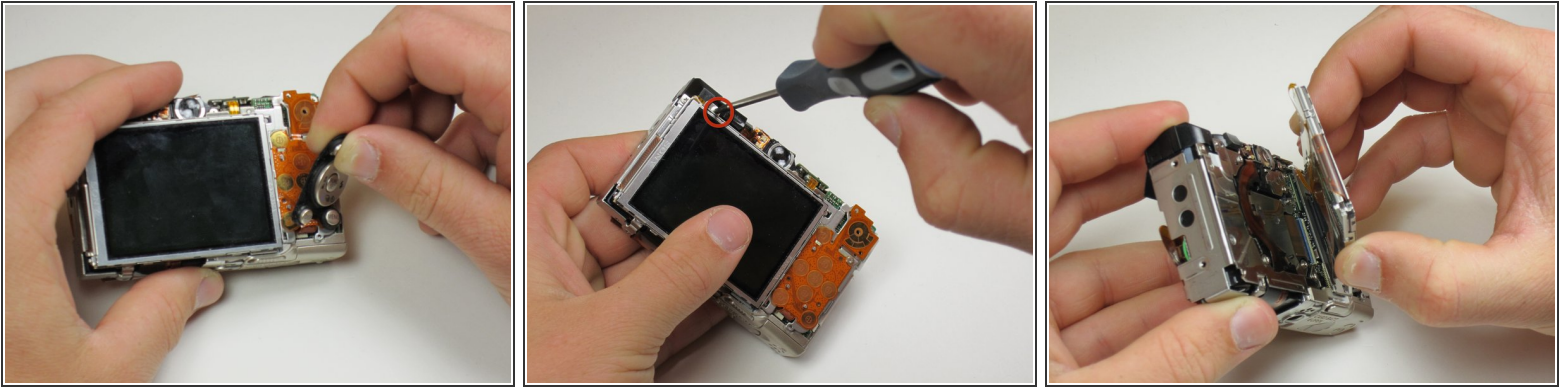
- Now the camera body is loose. gently lift the rear of the case to remove it from the camera.

Step 6



- Next, remove the front of the camera body. Be sure to keep track of the rubber ring.
- You have now successfully removed the outer case.

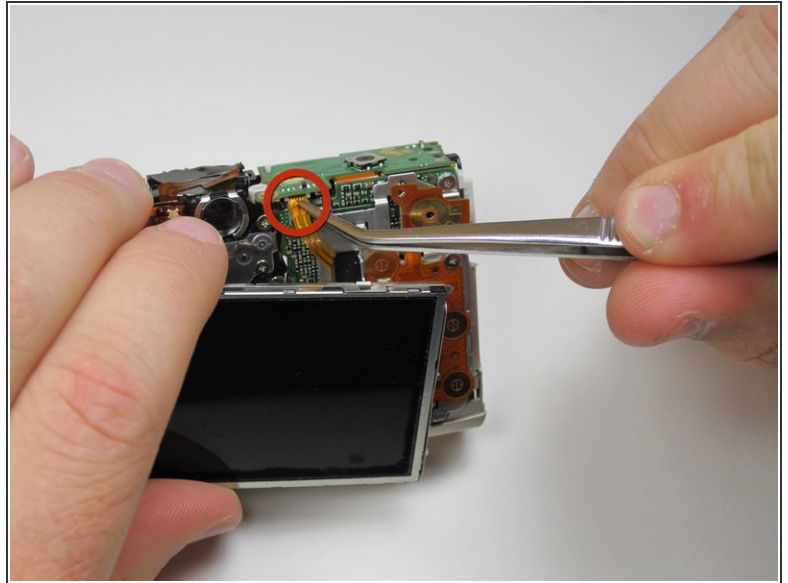
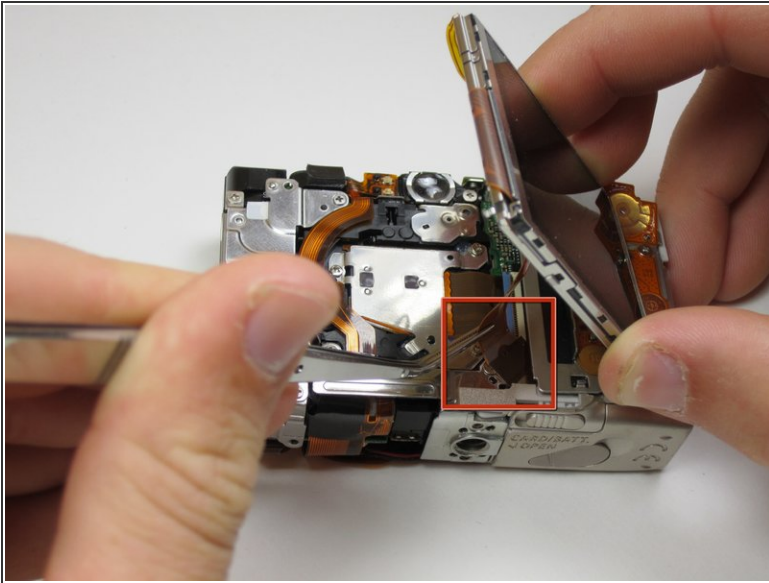
Step 7 — LCD Screen



- Next, peel the navigation buttons from the button panel and set them aside.
- To free the LCD display, remove the .113 inch screw in the top left corner.
- Then, rotate the screen clockwise until it lifts away from the camera.

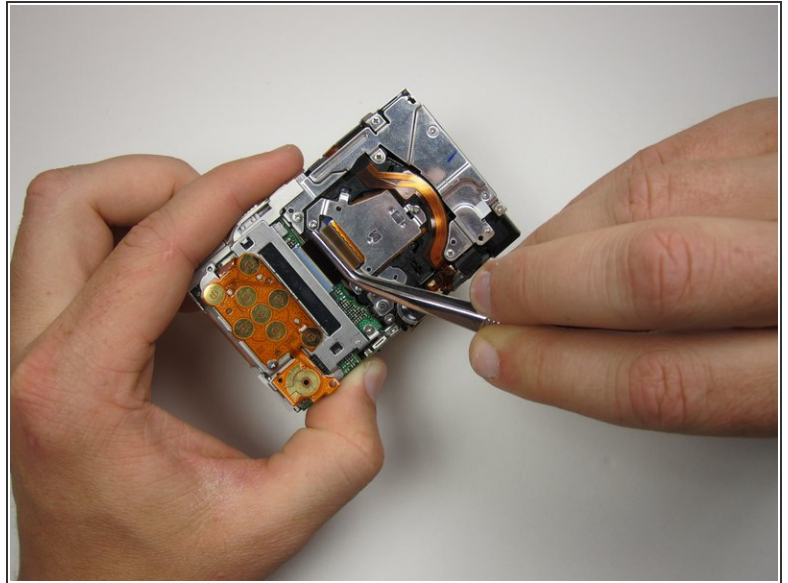
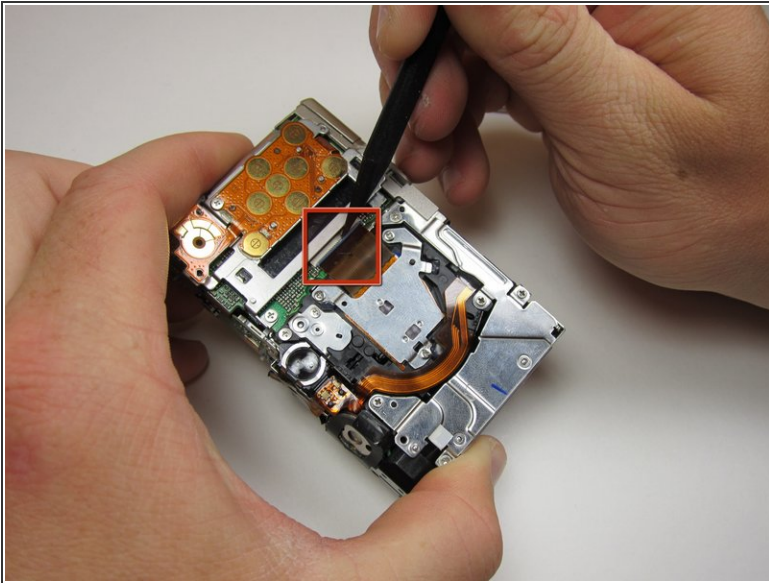
⚠ There are two ribbon cables attached to the rear of the screen. Do not try to pull the screen off at this point.

Step 8



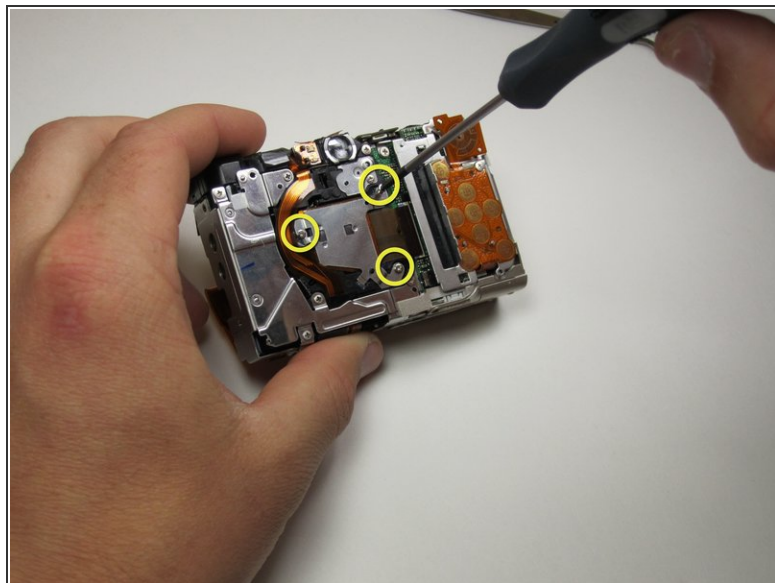
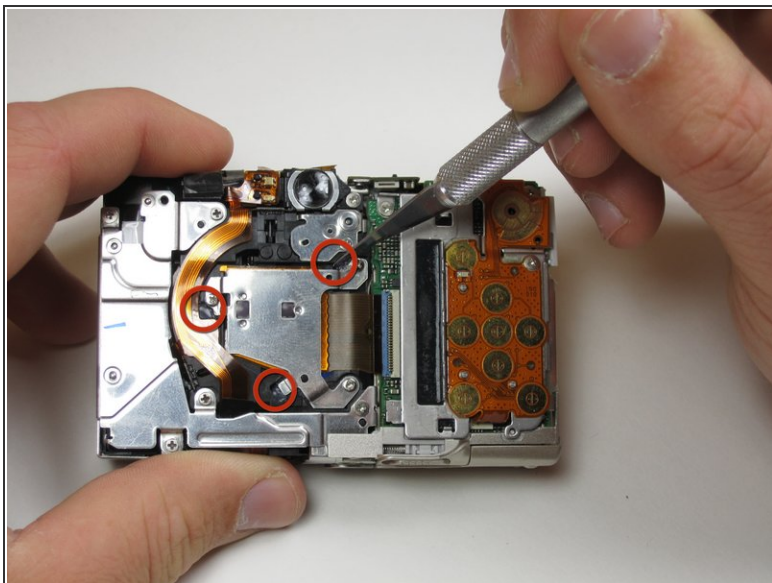
- To unplug the ribbon cables, pull them straight out of their plugs. Do this gently to avoid damaging the connections.
- After disconnecting both cables, pull the screen away from the camera to remove it.

Step 9 — Image Sensor



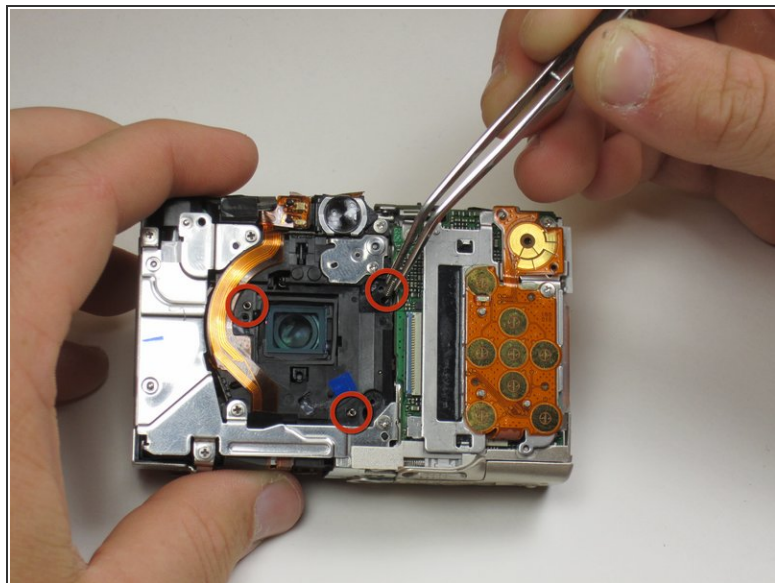
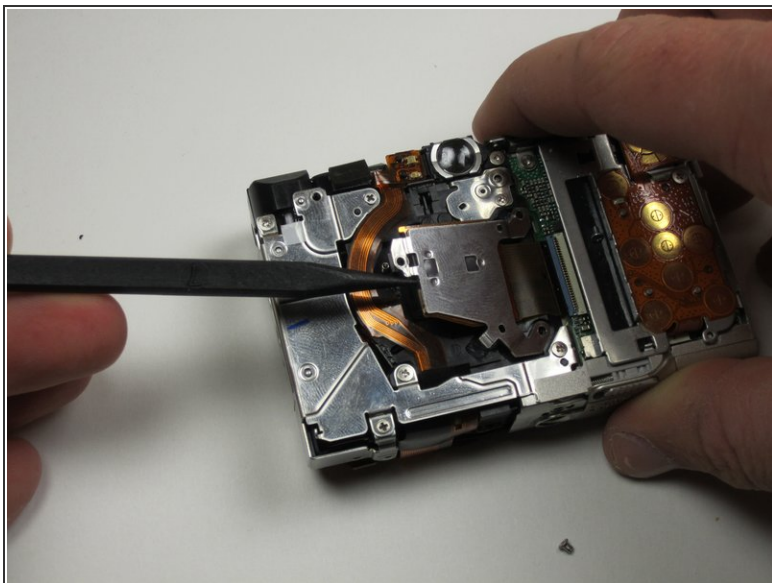
- Now the photo sensor is exposed. In order to remove the ribbon cable from its port, first flip up the blue locking mechanism.
- After the cable is unlocked, it easily pulls free.

Step 10



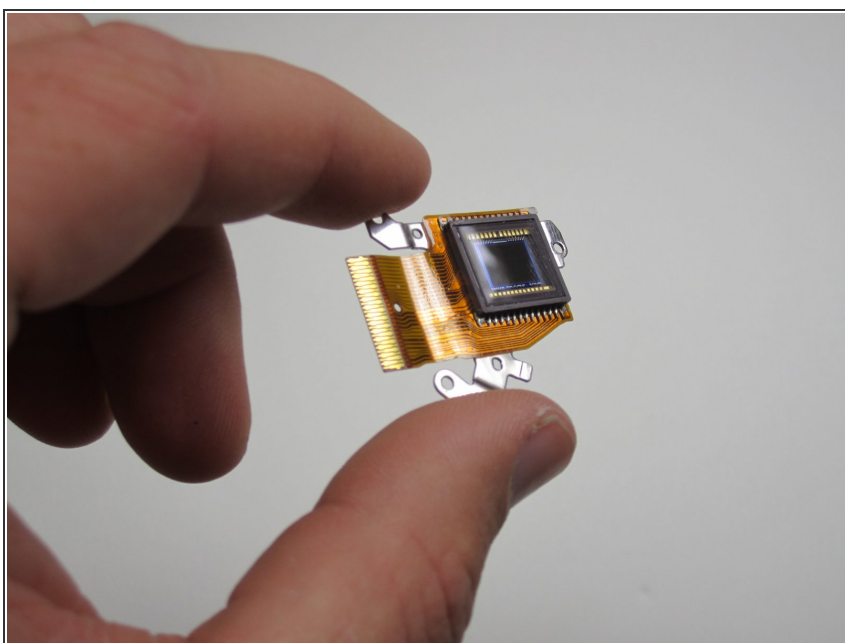
- In order to remove the photo sensor, you will have to cut through glue and remove screws.
 - Use a knife to carefully slice through the glue at the three points indicated. Try not to cut through anything but the glue to avoid damage.
- ⚠ WARNING: Knives are sharp. Treat them with respect.
- Now remove the three .15 inch screws holding the photo sensor to the camera frame.

Step 11



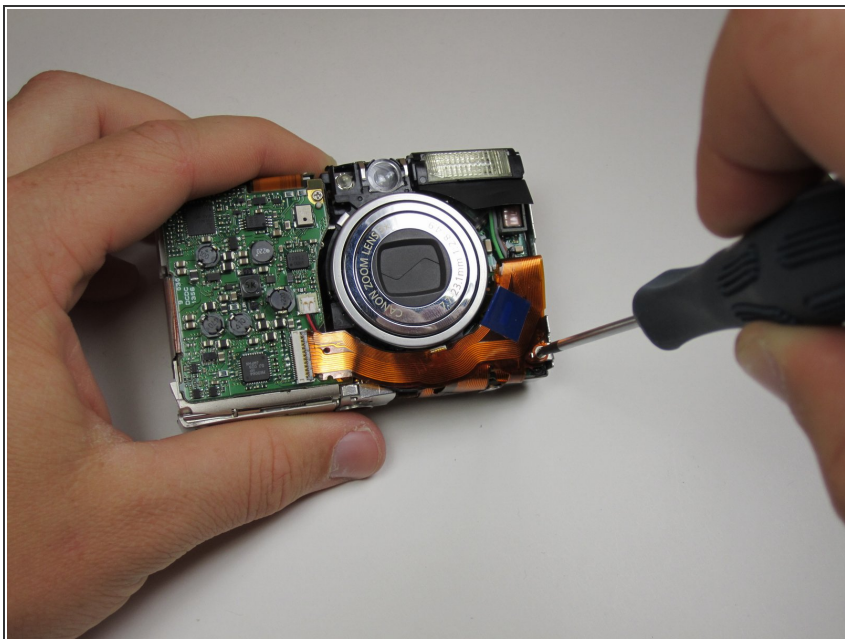
- Now you can carefully lift up the image sensor and remove it from the camera.
- Be careful not to lose the three small springs or the rubber grommet that lie beneath the sensor.

Step 12



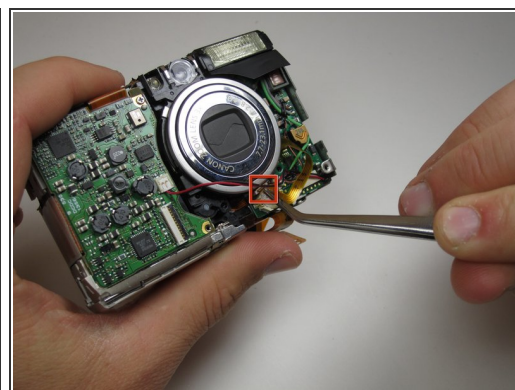
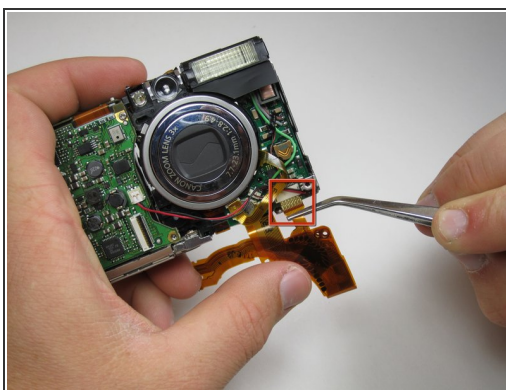
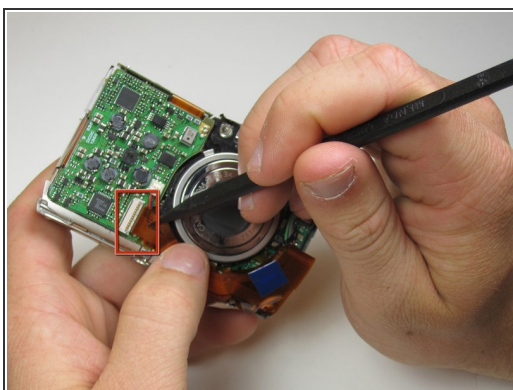
- You have now successfully removed the image sensor.

Step 13 — Flash Bulb Assembly



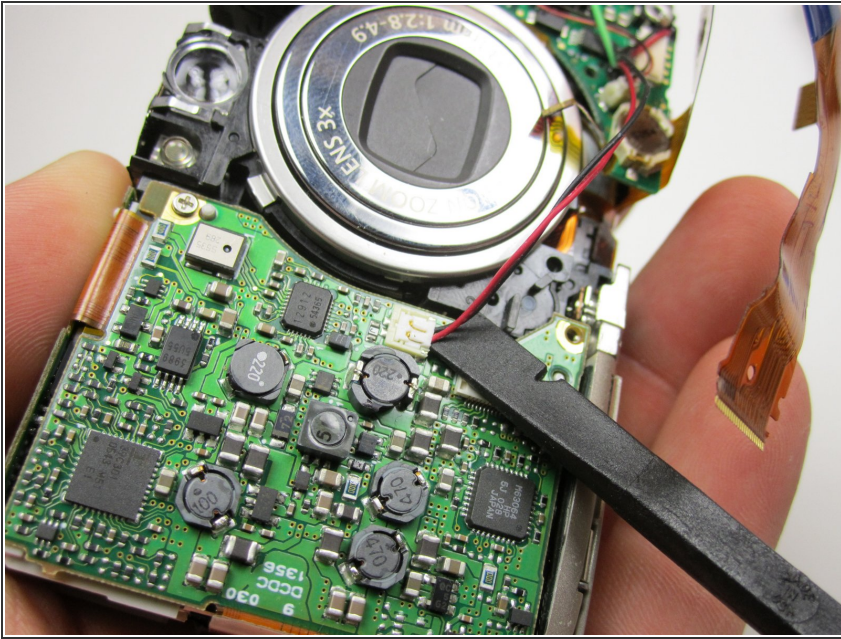
- Once the image sensor is removed, turn the camera over and find the screw in the bottom right corner.
- Remove this .01 inch screw to free the ribbon cables.

Step 14



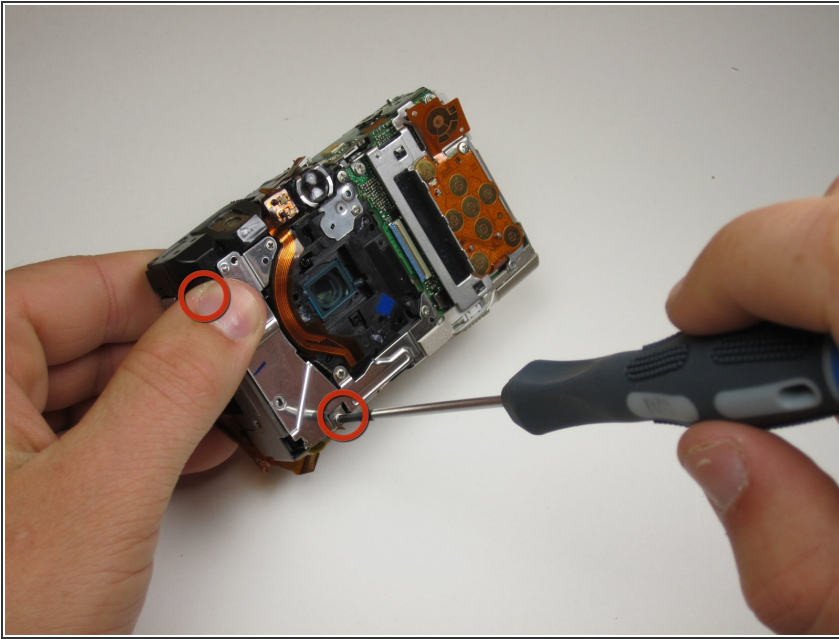
- One by one, detach the three ribbon cables from their ports.

Step 15



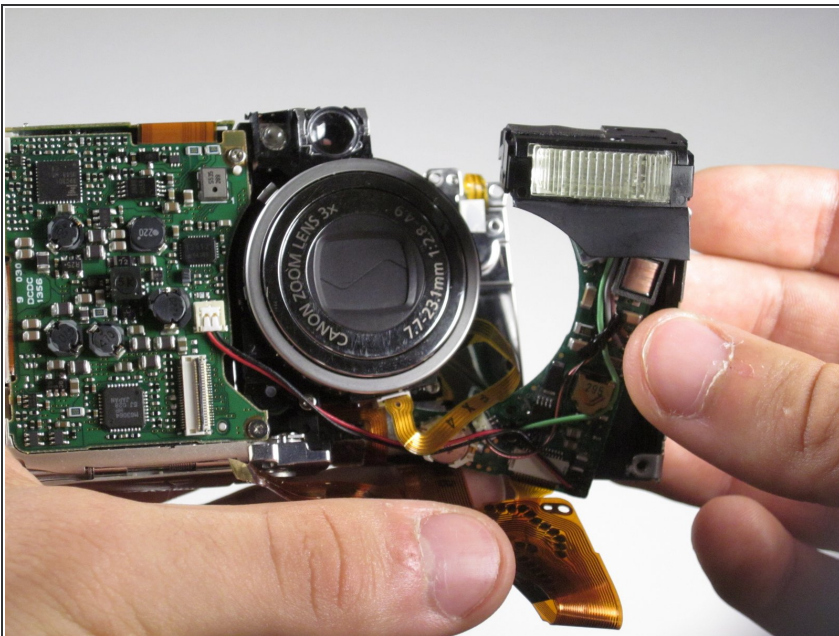
- ⓘ Pay special attention when removing this connector. It does not pull out like the rest of them. Instead, you must use a spudger to lift the connector vertically out of its slot.

Step 16



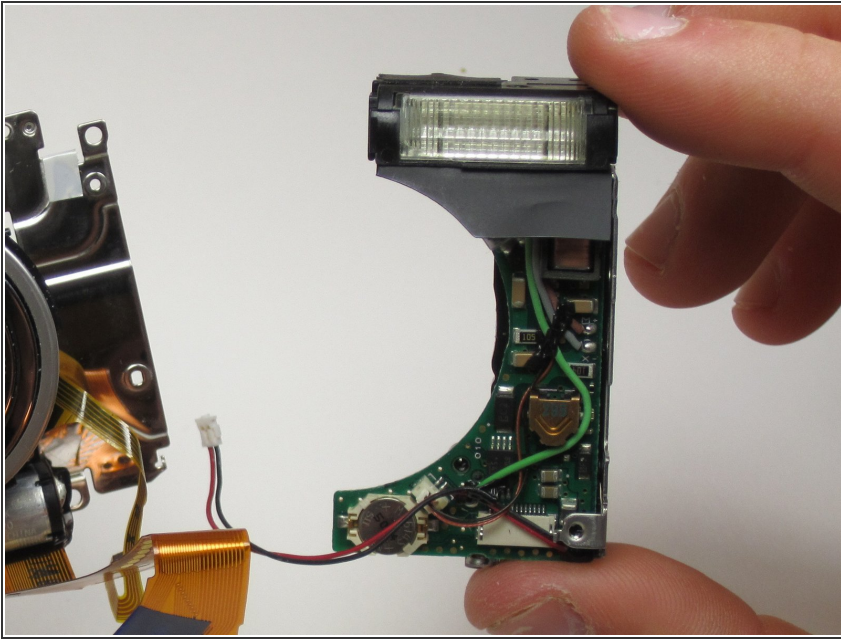
- Flip the camera over again so that the rear is showing and remove the two .065 inch screws holding the flash unit in place. They should be on the left side.

Step 17



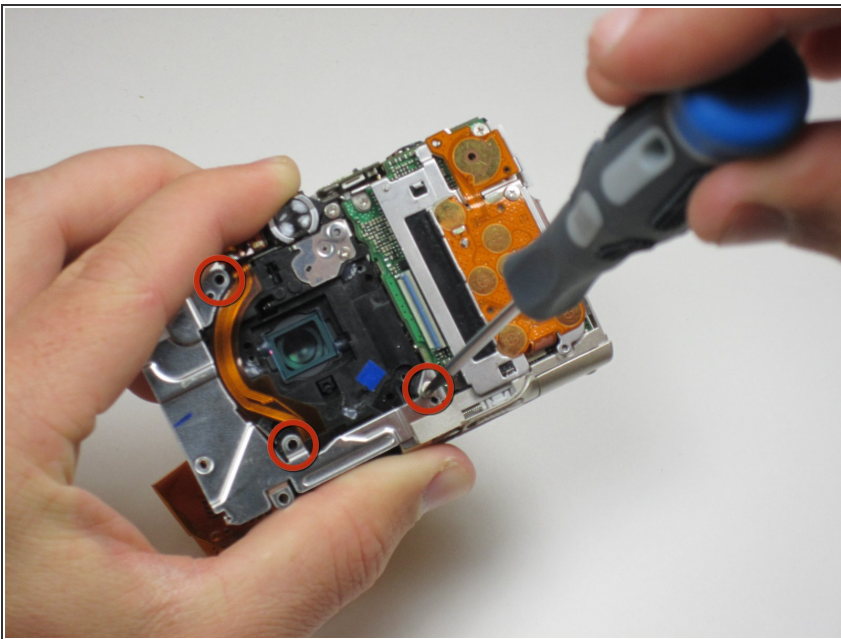
- Now you should be able to remove the flash unit from the camera.
- ⚠ When removing the flash, be careful when handling the capacitor. It may contain a powerful charge. Discharge may result in damage and personal injury.

Step 18



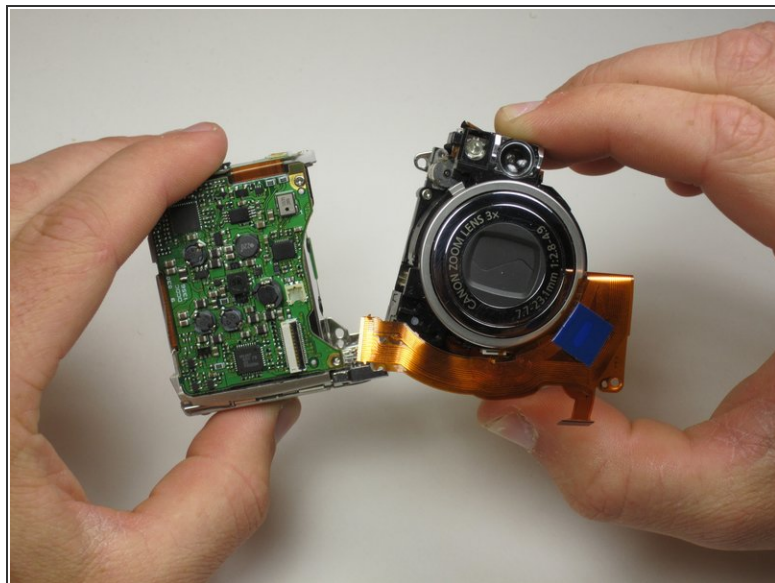
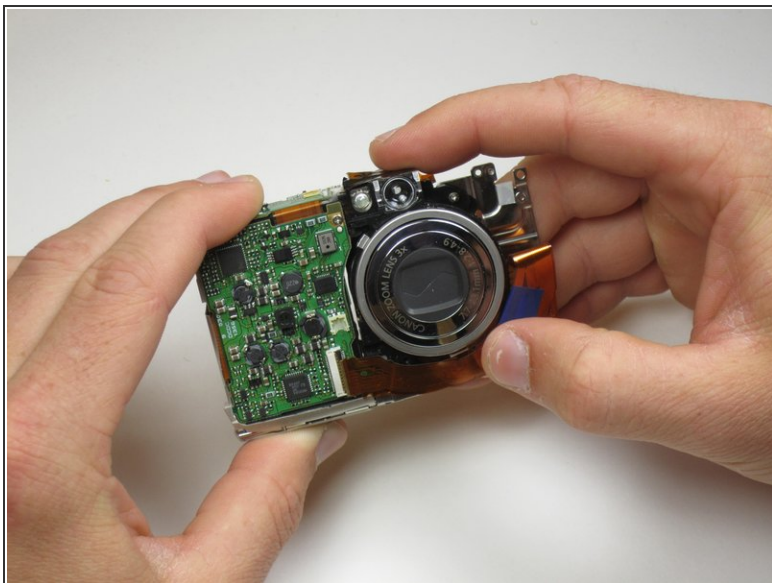
- You have now successfully removed the flash unit.

Step 19 — Zoom Lens Assembly



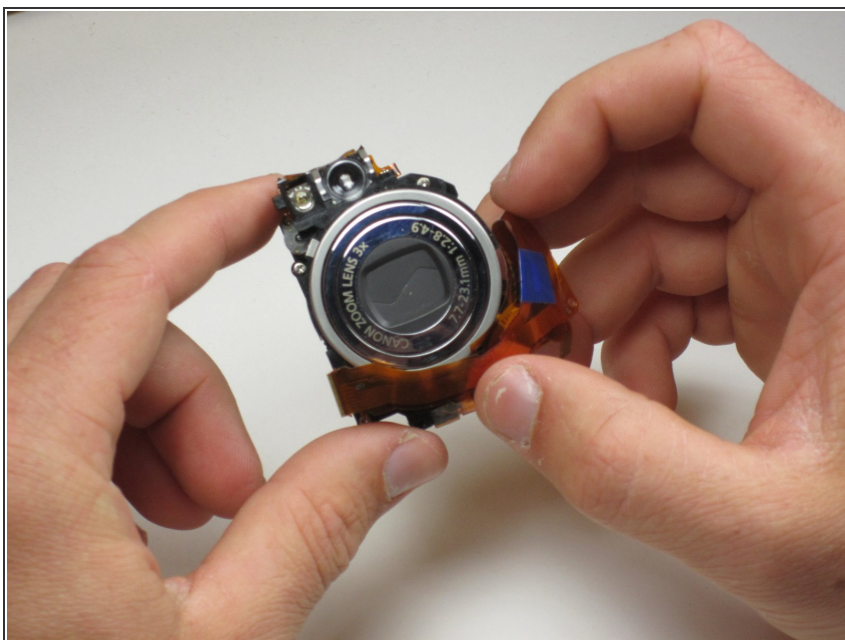
- Next, remove the three .12 inch screws that hold the lens assembly to the camera.

Step 20



- Finally, pull the lens assembly away from the camera frame. Make sure that none of the ribbon cables are tangled up.

Step 21



- You have now successfully removed the Canon PowerShot SD550 Lens Assembly.

To reassemble your device, follow these instructions in reverse order.

This document was generated on 2019-09-18 10:38:52 AM (MST).

