



Canon Powershot SX10 IS LCD Screen Replacement

How to replace a Canon Powershot SX10 IS LCD screen.

Written By: garrett knox



INTRODUCTION

The LCD screen is a monitor for the camera. It will display the photos before, during, and after capturing a picture. It also is used for changing settings easily. It does not operate in all camera modes. This guide will go through the steps needed to change the LCD screen if it is broken.



TOOLS:

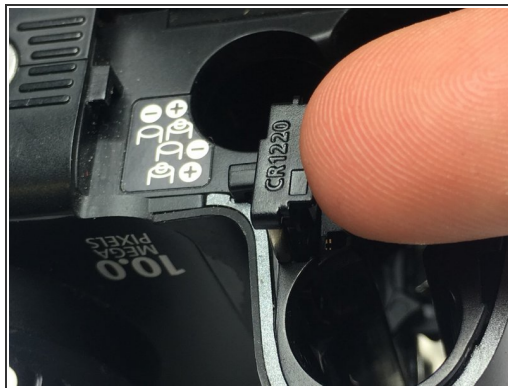
- [iFixit Opening Tools](#) (1)
 - [Phillips #00 Screwdriver](#) (1)
-

Step 1 — Lithium Ion Battery



- Open the door. Release the catch by sliding it towards the side of the camera.
- Then slide the door towards the front of the camera.

Step 2



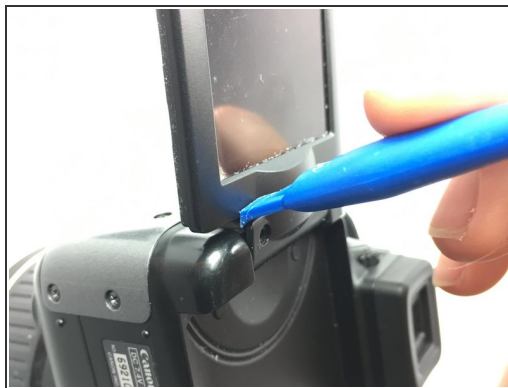
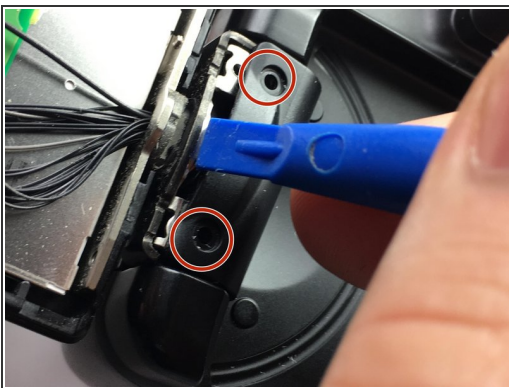
- Remove AA batteries.
- Using a fingernail or iFixit opening tools to pry up the battery cradle.
- Remove CR1220 battery from the cradle.

Step 3 — LCD Screen



- Remove all four screws on the corners of the screen cover.
- Gently pry open the cover with a fingernail or iFixit opening tool.

Step 4



- Remove two screws holding on the cover plate on the pivot.
- Remove the cover plate using an iFixit opening tool.
- i* You may need to loosen the bottom first, then pry on the top of the cover plate.
- Remove the two screws on top of the swivel arm. These two screws will be separated by the pivot point.

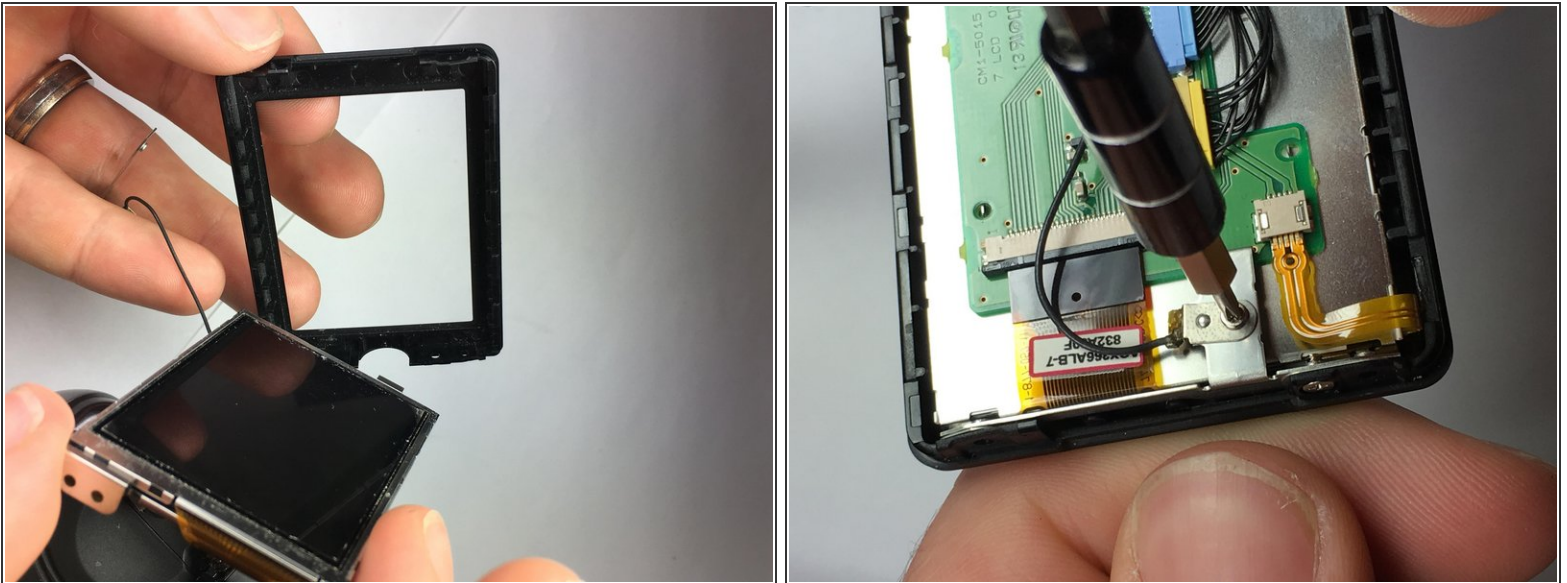
Step 5



- Remove grounding wire, then continue to remove the screws holding the screen and front cover plate on.

⚠ The screen and plate will drop after removing the last screw.

Step 6



- Unlatch the ribbon strip and power wires from the circuit board.

To reassemble your device, follow these instructions in reverse order.