



Canon Powershot SX10 IS Lithium Ion Battery Replacement

How to replace a Canon Powershot SX10 IS lithium ion battery.

Written By: Paul Spillan Jr



INTRODUCTION

The lithium battery (CR1220) needs to be replaced when the date and time stamp will not stay set, or the camera is still prompting the user to change the batteries after the AA batteries have been replaced.



TOOLS:

- [iFixit Opening Tools](#) (1)



PARTS:

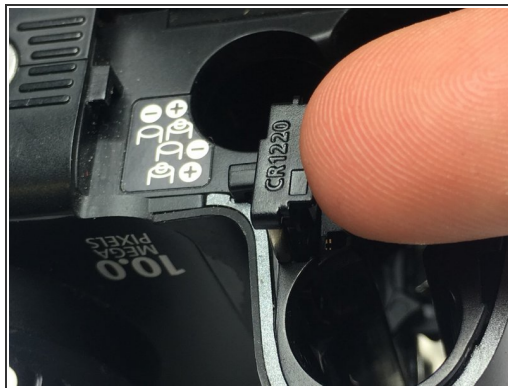
- [CR 1220 Battery](#) (1)

Step 1 — Lithium Ion Battery



- Open the door. Release the catch by sliding it towards the side of the camera.
- Then slide the door towards the front of the camera.

Step 2



- Remove AA batteries.
- Using a fingernail or iFixit opening tools to pry up the battery cradle.
- Remove CR1220 battery from the cradle.

To reassemble your device, follow these instructions in reverse order.