



Canon Powershot SX500 IS LCD Screen Replacement

This guide will show how to replace the LCD screen

Written By: Marty Woolf



INTRODUCTION

In order to replace the LCD screen you will need a PH00 screwdriver and a spudger. Be careful with the connections to the board it is easy to break.



TOOLS:

- [Phillips #00 Screwdriver](#) (1)
 - [iFixit Opening Tools](#) (1)
 - [Spudger](#) (1)
-

Step 1 — Battery



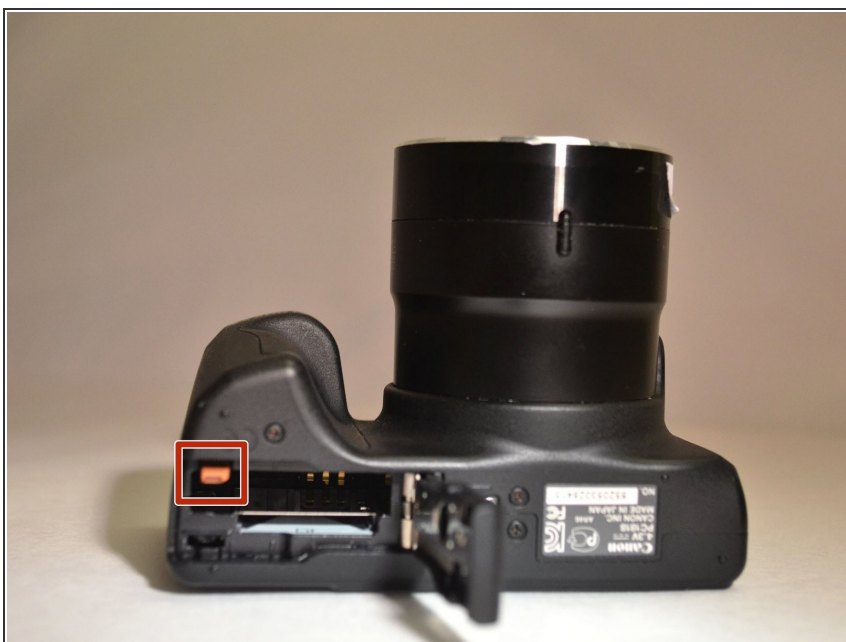
- Rotate the camera to expose the underside of the camera.

Step 2



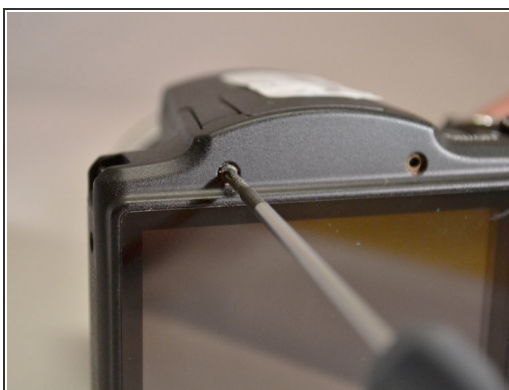
- Slide the rounded rectangle tab to the left to release the battery cover.

Step 3



- Push the small orange tab forward to release the battery (Battery is ready for removal).

Step 4 — Back Cover



- Using the Phillips 00 screwdriver, remove the two 4mm top screws above the LCD screen.

Step 5



- Using the Phillips 00 screwdriver, remove the two 4mm side screws to the left of the LCD screen.

Step 6



- Using the Phillips 00 screwdriver, remove the two 4mm side screws to the left of the LCD screen.

Step 7



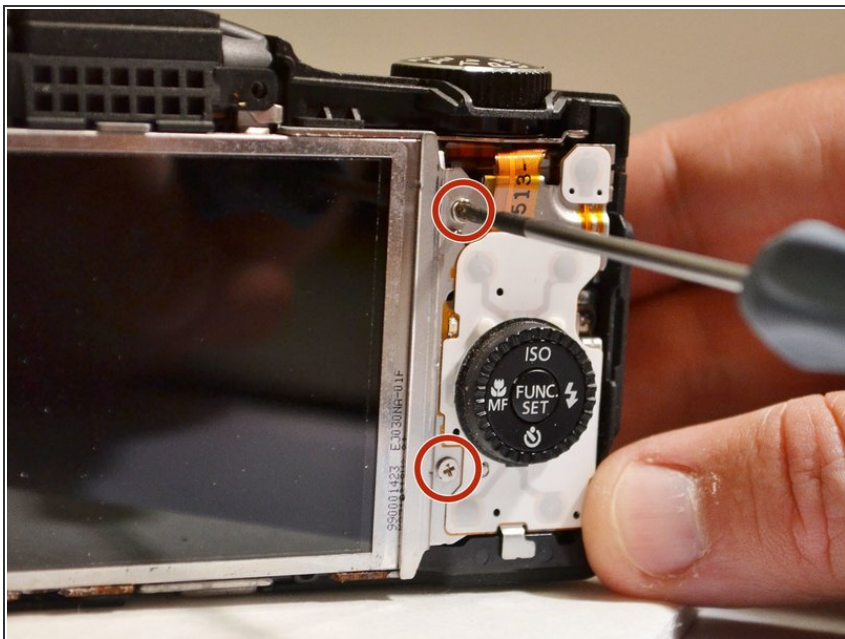
- Using the Phillips 00 screwdriver, remove the three 4mm screws from the underside of the camera.

Step 8



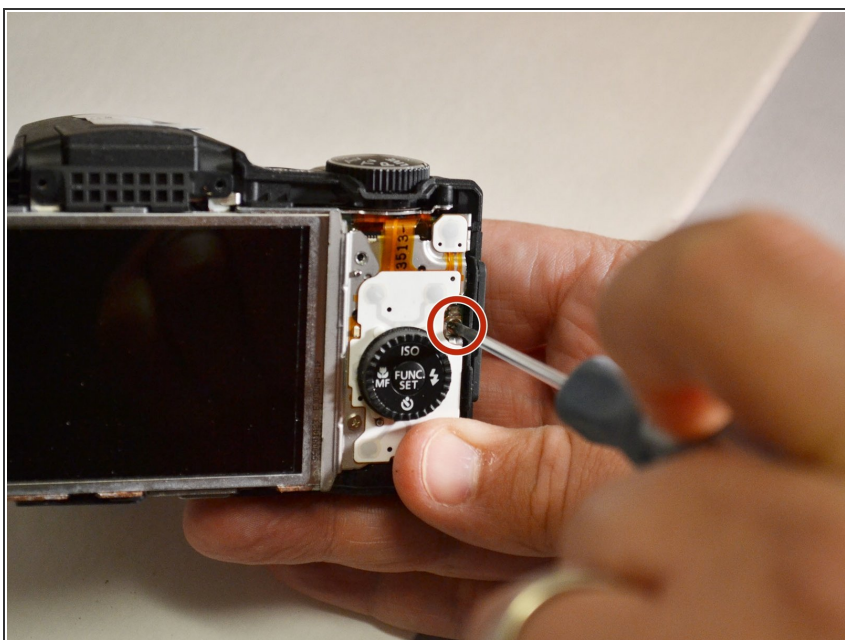
- Using the plastic pry tool, remove the back cover from camera.

Step 9 — Control Dial



- Using the Phillips 00 screwdriver, remove the two 3mm screws closest to the right of the LCD screen.

Step 10



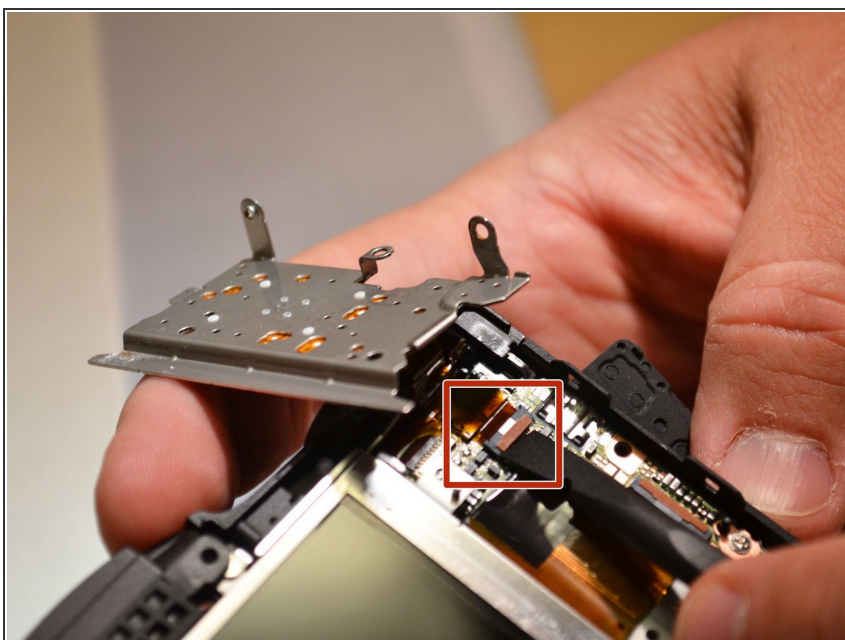
- Using the Phillips 00 screwdriver, remove the 4mm screw to the right of the control dial.

Step 11



- Using the spudger, lift the control dial to the right of the LCD screen.

Step 12



- Using the spudger, lift the connection tab and remove the control dial's orange ribbon from motherboard.

Step 13 — LCD Screen



- Using spudger, lift the tab on the connector and remove the orange ribbon from motherboard (LCD screen is separated from camera).

To reassemble your device, follow these instructions in reverse order.